

LISTA DE APLICACIONES - BUYERS GUIDE

RB2516

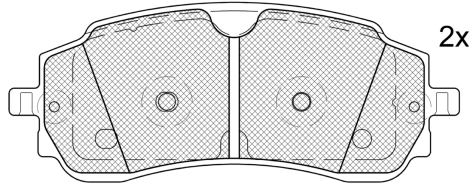


8 424073 292971

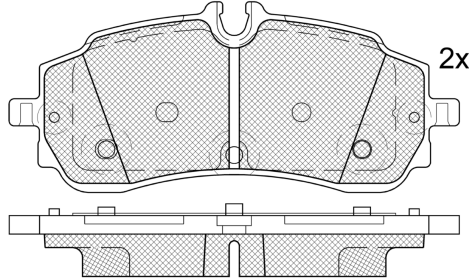
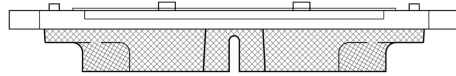
Qty: 300

Weight: 1.640

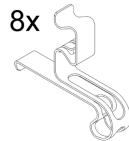
| O.E.M. | MAKE |
|---------------|------|
| 2 712 621 | FORD |
| KTPZ312M008AB | FORD |



2x



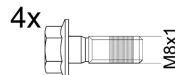
2x



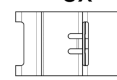
1-640275 E



1-640237 E



2-690059 E



1-69026 E



8x



8x

1-610744 E

RB2516



90R-02A0111/6085



Chassis Brake Int. (Bosch)

133.9x53.4x18.8

133.9x56.7x18.8

WVA

27067

27068

Sin Filas



Trac.

CC

Kw

CV



Front / Rear

FORD

TOURNEO CUSTOM V710 (NXN) 12.23-

Bus (Minibus-M2-Segment)

| | | | | | | | |
|--------------------------------|---------------|-----|------|-----|-----|--------|---|
| 2.5 Duratec Plug-in-Hybrid 4x4 | Gasol./el éc. | FWD | 2488 | 171 | 232 | 04.24- | * |
| E-Tourneo Custom | Eléctrico | RWD | | 100 | 136 | 08.24- | * |
| E-Tourneo Custom | Eléctrico | RWD | | 160 | 218 | 08.24- | * |
| 2.0 EcoBlue | Diesel | FWD | 1996 | 81 | 110 | 12.23- | * |
| 2.0 EcoBlue | Diesel | FWD | 1996 | 100 | 136 | 12.23- | * |
| 2.0 EcoBlue AWD | Diesel | 4WD | 1996 | 100 | 136 | 12.23- | * |
| 2.0 EcoBlue | Diesel | FWD | 1996 | 110 | 150 | 12.23- | * |
| 2.0 EcoBlue | Diesel | FWD | 1996 | 125 | 170 | 12.23- | * |
| 2.0 EcoBlue AWD | Diesel | 4WD | 1996 | 125 | 170 | 12.23- | * |

TRANSIT CUSTOM (NRN) 10.23-

[CAMBIADO]:Furgón (LCVs-N1 Segment)

| | | | | | | | |
|--------------------------------|---------------|-----|------|-----|-----|--------|---|
| 2.5 Duratec Plug-in-Hybrid 4x4 | Gasol./el éc. | FWD | 2488 | 171 | 232 | 04.24- | * |
| E-Transit Custom | Eléctrico | RWD | | 100 | 136 | 08.24- | * |
| E-Transit Custom | Eléctrico | RWD | | 160 | 218 | 08.24- | * |
| E-Transit Custom | Eléctrico | RWD | | 210 | 286 | 04.24- | * |
| 2.0 EcoBlue | Diesel | FWD | 1996 | 81 | 110 | 10.23- | * |
| 2.0 EcoBlue | Diesel | FWD | 1996 | 100 | 136 | 10.23- | * |
| 2.0 EcoBlue AWD | Diesel | 4WD | 1996 | 100 | 136 | 10.23- | * |
| 2.0 EcoBlue | Diesel | FWD | 1996 | 110 | 150 | 10.23- | * |
| 2.0 EcoBlue | Diesel | FWD | 1996 | 125 | 170 | 10.23- | * |
| 2.0 EcoBlue AWD | Diesel | 4WD | 1996 | 125 | 170 | 10.23- | * |

LISTA DE APLICACIONES - BUYERS GUIDE

| TRANSIT CUSTOM V710 (NXN) 03.24- | | | | | Bus (LCVs-N1 Segment) | | | |
|----------------------------------|--|------------------|-----|------|-----------------------|-----|--------|---|
| 2.5 Duratec Plug-in-Hybrid 4x4 | | Gasol./el éc. | FWD | 2488 | 171 | 232 | 04.24- | * |
| E-Transit Custom | | Eléctrico | RWD | | 100 | 136 | 08.24- | * |
| E-Transit Custom | | Eléctrico | RWD | | 160 | 218 | 08.24- | * |
| 2.0 EcoBlue | | Diesel | FWD | 1996 | 81 | 110 | 04.24- | * |
| 2.0 EcoBlue | | Diesel | FWD | 1996 | 100 | 136 | 04.24- | * |
| 2.0 EcoBlue AWD | | Diesel | 4WD | 1996 | 100 | 136 | 04.24- | * |
| 2.0 EcoBlue | | Diesel | FWD | 1996 | 110 | 150 | 04.24- | * |
| 2.0 EcoBlue | | Diesel | FWD | 1996 | 125 | 170 | 04.24- | * |
| 2.0 EcoBlue AWD | | Diesel | 4WD | 1996 | 125 | 170 | 04.24- | * |