

LISTA DE APLICACIONES - BUYERS GUIDE

RB2503

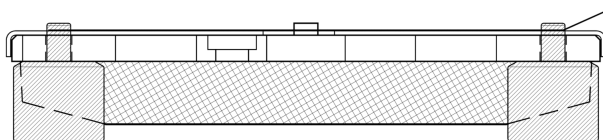
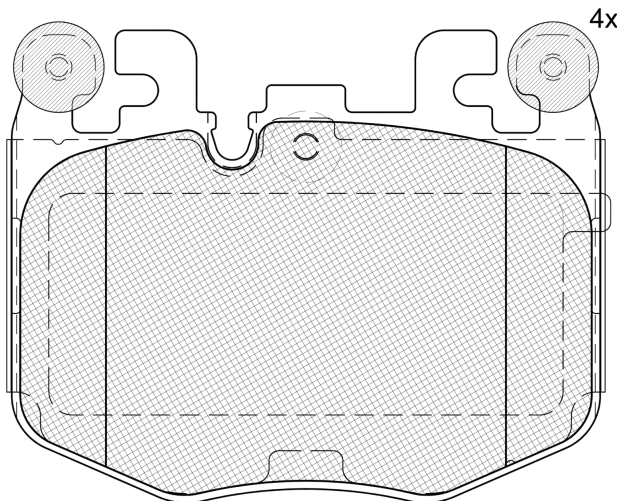


8 424073 292766

Qty: 300

Weight: 3.290

O.E.M.	MAKE
34 10 8 844 368	BMW
34108863322	BMW
8844368	BMW
8863322	BMW



RB2503



90R-02A0111/5973



Brembo

125.65x99.2x19.6

WVA	FMSI
26776	D2480-9708

Sin Filas



Trac.	CC	Kw	CV
-------	----	----	----



Front / Rear

BMW

2 Serie II (G42, G87) 08.21-

Coupé (Compact car-C Segment)

218i	Gasolina	RWD	1998	115	156	07.22-	*
230 i	Gasolina	RWD	1998	180	245	04.22-	*
230 i xDrive (B48 B20 B)	Gasolina	4WD	1998	190	258	08.21-	*
M240 i (B58 B30 C)	Gasolina	RWD	2998	245	333	08.22-	*
M240 i	Gasolina	RWD	2998	275	374	07.22-	*
M240 i (B58 B30 B)	Gasolina	RWD	2998	285	387	07.22-	*

3 Serie VII (G20, G80, G28) 11.18-

Sedán (Compact executive car-D Segment)

330i	Gasolina	RWD	1998	180	245	07.22-	*
330 i xDrive	Gasolina	4WD	1998	180	245	07.22-	*

3 Serie VII Touring (G21, G81) 07.19-

[CAMBIADO]:Break (Compact executive car-D Segment)

330i	Gasolina	RWD	1998	180	245	07.19-	*
330 i xDrive	Gasolina	4WD	1998	180	245	07.19-	*

3 Serie VII Touring Van (G21) 07.19-

[CAMBIADO]:Furgón/Break (Compact executive car-D Segment)

318 d	Diesel	RWD	1995	110	150	11.19-06.22	*
-------	--------	-----	------	-----	-----	-------------	---

4 Serie II (G23, G83) 11.20-

Cabrio (Compact executive car-D Segment)

M440 i Mild-Hybrid	Gasol./el éc.	RWD	2998	275	374	07.21-	*
--------------------	---------------	-----	------	-----	-----	--------	---

4 Serie II (G22, G82) 07.20-

Coupé (Compact executive car-D Segment)

430 i	Gasolina	RWD	1998	180	245	07.21-	*
430 i xDrive	Gasolina	4WD	1998	180	245	03.22-	*
430 i (B48 B20 B)	Gasolina	RWD	1998	190	258	07.21-	*

LISTA DE APLICACIONES - BUYERS GUIDE

430 i xDrive		Gasolina	4WD	1998	190	258	07.21-	*
430 i		Gasol./el éc.	RWD	1998	190	258	07.24-	*
430 i Mild-Hybrid xDrive		Gasol./el éc.	4WD	1998	190	258	07.24-	*
M440 i Mild-Hybrid		Gasol./el éc.	RWD	2998	275	374	09.22-	*
M440 i Mild-Hybrid xDrive		Gasol./el éc.	4WD	2998	275	374	07.21-	*
M440 i Mild-Hybrid (B58 B30 B, JA1)		Gasol./el éc.	RWD	2998	285	387	11.20-	*
420 d Mild-Hybrid (B47 D20 B)		Diesel/el éc.	RWD	1995	120	163	07.20-	*
420 d Mild-Hybrid (JA1)		Diesel/el éc.	RWD	1995	120	163	07.20-	*
420 d Mild-Hybrid (B47 D20 B)		Diesel/el éc.	RWD	1995	140	190	07.20-	*
420 d Mild-Hybrid (JA1)		Diesel/el éc.	RWD	1995	140	190	07.20-	*
420 d Mild-Hybrid xDrive (B47 D20 B)		Diesel/el éc.	4WD	1995	140	190	07.20-	*
420 d Mild-Hybrid xDrive (JA1)		Diesel/el éc.	4WD	1995	140	190	07.20-	*
430 d Mild-Hybrid xDrive		Diesel/el éc.	4WD	2993	210	286	05.22-	*
i4 (G26) 11.21-					Coupé (Compact executive car-D Segment)			
eDrive35		Eléctrico	RWD		210	286	11.22-	*
xDrive40		Eléctrico	4WD		295	401	07.24-	*
X3 III (G01, F97, G08) 07.17-					SUV (Luxury Crossover SUV-J Segment)			
xDrive 30 i Mild Hybrid		Gasol./el éc.	4WD	1998	180	245	08.21-	*
xDrive 30e Plug-in-Hybrid		Gasol./el éc.	4WD	1998	200	272	01.23-	*
xDrive M40 i Mild Hybrid		Gasol./el éc.	4WD	2998	265	360	08.21-	*
X4 II (G02, F98) 04.18-					SUV (Luxury Crossover SUV-J Segment)			
xDrive 20 i Mild Hybrid		Gasol./el éc.	4WD	1998	135	184	08.21-	*
xDrive 30 i Mild Hybrid		Gasol./el éc.	4WD	1998	180	245	07.21-	*
xDrive M40 i Mild Hybrid		Gasol./el éc.	4WD	2998	265	360	08.21-	*
X5 IV (G05) 11.19-					Furgoneta/SUV (Luxury Crossover SUV-J Segment)			
xDrive 40 i (B58 B30 C)		Gasolina	4WD	2998	250	340	11.19-03.23	*
X5 IV (G05, F95) 08.18-					SUV (Luxury Crossover SUV-J Segment)			
xDrive 40 i (B58 B30 C)		Gasolina	4WD	2998	250	340	08.18-03.23	*
xDrive 40 i Mild-Hybrid		Gasol./el éc.	4WD	2998	245	333	12.20-03.23	*
xDrive 40 i Mild-Hybrid		Gasol./el éc.	4WD	2998	280	381	04.23-	*
xDrive 30 d Mild-Hybrid (B57 D30 B)		Diesel/el éc.	4WD	2993	183	249	08.20-	*
xDrive 30 d Mild-Hybrid (JA1)		Diesel/el éc.	4WD	2993	183	249	08.20-	*
xDrive 30 d Mild-Hybrid (B57 D30 B)		Diesel/el éc.	4WD	2993	210	286	08.20-	*
xDrive 30 d Mild-Hybrid (JA1)		Diesel/el éc.	4WD	2993	210	286	08.20-	*
xDrive 30 d Mild-Hybrid		Diesel/el éc.	4WD	2993	219	298	04.23-	*
xDrive 40 d Mild-Hybrid		Diesel/el éc.	4WD	2993	259	352	06.23-	*

LISTA DE APLICACIONES - BUYERS GUIDE

X6 III (G06, F96) 08.19-					SUV (Luxury Crossover SUV-J Segment)			
xDrive 40 i (B58 B30 C)		Gasolina	4WD	2998	250	340	08.19-03.23	*
xDrive 30 i Mild-Hybrid (B48 B20 S)		Gasol./el éc.	4WD	1998	190	258	05.23-	*
xDrive 40 i Mild-Hybrid		Gasol./el éc.	4WD	2998	245	333	12.20-03.23	*
xDrive 40 i Mild Hybrid (B58 B30 C)		Gasol./el éc.	4WD	2998	250	340	04.22-	*
xDrive 40 i Mild Hybrid		Gasol./el éc.	4WD	2998	280	381	04.23-	*
xDrive 30 d Mild-Hybrid (B57 D30 B)		Diesel/el éc.	4WD	2993	155	211	08.20-	*
xDrive 30 d Mild-Hybrid (JA1)		Diesel/el éc.	4WD	2993	155	211	08.20-	*
xDrive 30 d Mild-Hybrid		Diesel/el éc.	4WD	2993	164	223	04.23-	*
xDrive 30 d Mild-Hybrid (B57 D30 B)		Diesel/el éc.	4WD	2993	183	249	08.20-	*
xDrive 30 d Mild-Hybrid (JA1)		Diesel/el éc.	4WD	2993	183	249	08.20-	*
xDrive 30 d Mild-Hybrid (B57 D30 B)		Diesel/el éc.	4WD	2993	210	286	08.20-03.23	*
xDrive 30 d Mild-Hybrid (JA1)		Diesel/el éc.	4WD	2993	210	286	08.20-03.23	*
xDrive 30 d Mild-Hybrid		Diesel/el éc.	4WD	2993	219	298	04.23-	*
xDrive 40 d Mild-Hybrid		Diesel/el éc.	4WD	2993	259	352	06.23-	*
BMW (BRILLIANCE)								
X5 (G18) 03.22-					SUV ()			
xDrive 40 Li Mild-Hybrid (B58B30C)		Gasol./el éc.	4WD	2998	245	333	03.22-	*
xDrive 40 Li Mild-Hybrid (B58 B30 P)		Gasol./el éc.	4WD	2998	280	381	08.23-	*