

# LISTA DE APLICACIONES - BUYERS GUIDE

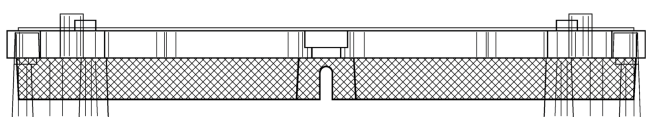
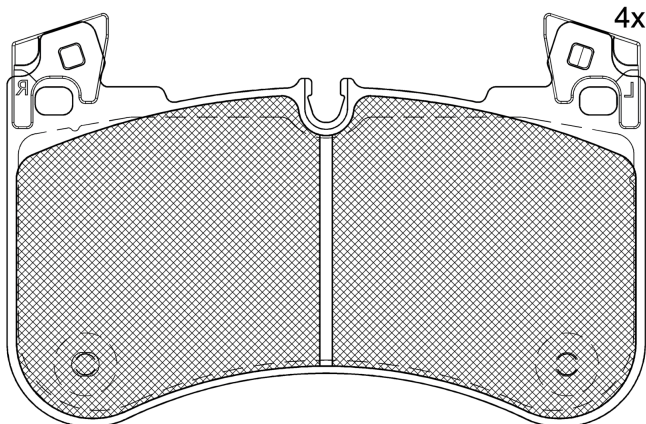
## RB2366



Qty: 300

Weight: 3.715

O.E.M.	MAKE
LR-110084	LAND ROVER
LR-138646	LAND ROVER
LR149626	LAND ROVER
LR157174	LAND ROVER



## RB2366

E 9 90R-02A0111/5449



Brembo

152.5x98.7x17.1

WVA	FMSI
20581	D2184-9428

Sin Filas



Trac.	CC	Kw	CV
-------	----	----	----



Front / Rear

### LAND ROVER

DEFENDER III Sport Wagon (L663) 09.19-					Closed SUV (Off-Road SUV-J Segment)			
P300 Si4 4x4 (PT204)		Gasolina	4WD	1997	221	300	09.19-	*
P425 4x4		Gasolina	4WD	5000	313	426	05.24-	*
P500 4x4		Gasolina	4WD	5000	368	500	04.23-	*
P525 4x4		Gasolina	4WD	5000	386	525	05.21-	*
P300e Hybrid 4x4		Gasol./el éc.	4WD	1997	221	300	06.24-	*
P300 MHEV 4x4		Gasol./el éc.	4WD	1997	221	300	07.23-	*
P400e Hybrid 4x4 (PT204)		Gasol./el éc.	4WD	1997	221	300	09.20-	*
P400e Hybrid 4x4 (PT204)		Gasol./el éc.	4WD	1997	297	404	09.20-	*
P300 MHEV 4x4 (AJ20P6)		Gasol./el éc.	4WD	2996	221	300	05.22-	*
P400 I6 MHEV 4x4 (PT306)		Gasol./el éc.	4WD	2996	294	400	09.19-	*
P635 OCTA MHEV 4x4		Gasol./el éc.	4WD	4395	467	635	05.24-	*
2.0 D200 MHEV 4x4 (AJ20D4)		Diesel/el éc.	4WD	1997	147	200	09.20-	*
D200 MHEV 4x4 (AJ20D6)		Diesel/el éc.	4WD	2997	147	200	09.20-	*
D250 MHEV 4x4 (AJ20D6)		Diesel/el éc.	4WD	2997	183	249	09.20-	*
D300 MHEV 4x4 (AJ20D6)		Diesel/el éc.	4WD	2997	221	300	09.20-	*
D350 MHEV 4x4		Diesel/el éc.	4WD	2997	258	350	05.24-	*
D200 SD4 4x4 (204DT)		Diesel	4WD	1999	147	200	09.19-	*

# LISTA DE APLICACIONES - BUYERS GUIDE

D240 SD4 4x4 (204DT)	Diesel	4WD	1999	177	241	09.19-	*
<b>DEFENDER III Van (L663) 02.20-</b>				<b>Furgoneta/Closed SUV (Off-Road SUV-J Segment)</b>			
2.0 P300 Si4 4x4 (PT204)	Gasolina	4WD	1997	221	300	02.20-	*
2.0 P400e Hybrid 4x4 (PT204)	Gasol./el éc.	4WD	1997	221	300	09.20-	*
2.0 P400e Hybrid 4x4 (PT204)	Gasol./el éc.	4WD	1997	297	404	09.20-	*
3.0 P400 I6 MHEV 4x4 (PT306)	Gasol./el éc.	4WD	2996	294	400	02.20-	*
2.0 D200 MHEV 4x4 (AJ20D4)	Diesel/el éc.	4WD	1997	147	200	09.20-	*
3.0 D200 MHEV 4x4 (AJ20D6)	Diesel/el éc.	4WD	2997	147	200	09.20-	*
3.0 D250 MHEV 4x4 (AJ20D6)	Diesel/el éc.	4WD	2997	183	249	09.20-	*
3.0 D300 MHEV 4x4 (AJ20D6)	Diesel/el éc.	4WD	2997	221	300	09.20-	*
3.0 D350 MHEV 4x4	Diesel/el éc.	4WD	2997	258	351	05.24-	*
2.0 D200 SD4 4x4 (204DT)	Diesel	4WD	1999	147	200	02.20-	*
2.0 D240 SD4 4x4 (204DT)	Diesel	4WD	1999	177	241	02.20-	*
<b>DISCOVERY V / LR5 (L462) 09.16-</b>				<b>Furgoneta/SUV (Executive SUV-J Segment)</b>			
2.0 Si4 4x4	Gasolina	4WD	1997	221	300	09.17-	*
3.0 SCV6 4x4	Gasolina	4WD	2995	250	340	09.16-	*
3.0 D300 MHEV 4x4	Diesel/el éc.	4WD	2997	221	300	12.20-	*
2.0 Td4 4x4	Diesel	4WD	1999	132	179	09.16-12.18	*
2.0 SD4 4x4	Diesel	4WD	1999	177	241	09.16-	*
3.0 Td6 4x4	Diesel	4WD	2993	190	258	09.16-	*
3.0 SDV6 4x4	Diesel	4WD	2993	225	306	09.18-	*
<b>DISCOVERY V / LR5 (L462) 09.16-</b>				<b>SUV (Executive SUV-J Segment)</b>			
2.0 Si4 4x4 (PT204)	Gasolina	4WD	1997	221	300	09.17-	*
3.0 SCV6 4x4 (306PS)	Gasolina	4WD	2995	250	340	09.16-	*
P360 MHEV 4x4	Gasol./el éc.	4WD	2996	265	360	12.20-	*
D250 MHEV 4x4	Diesel/el éc.	4WD	2997	183	249	12.20-	*
D300 MHEV 4x4	Diesel/el éc.	4WD	2997	221	300	12.20-	*
D350 MHEV 4x4	Diesel/el éc.	4WD	2997	257	349	05.24-	*
2.0 Td4 4x4 (204DTD)	Diesel	4WD	1999	132	180	09.16-	*
2.0 SD4 4x4 (204DTA)	Diesel	4WD	1999	177	241	09.16-	*
3.0 D 4x4 (306DT)	Diesel	4WD	2993	155	211	09.16-	*
3.0 D 4x4 (306DT)	Diesel	4WD	2993	183	249	09.16-	*
3.0 Td6 4x4 (306DT)	Diesel	4WD	2993	190	258	09.16-	*
3.0 SDV6 4x4 (306DT)	Diesel	4WD	2993	225	306	09.18-	*
<b>RANGE ROVER IV (L405) 08.12-</b>				<b>SUV (Luxury Crossover SUV-J Segment)</b>			
3.0 SCV6 4x4 (306PS)	Gasolina	4WD	2995	250	340	10.13-09.21	*
3.0 SCV6 4x4 (306PS)	Gasolina	4WD	2995	280	380	06.15-09.21	*
3.0P400 4x4 (PT306)	Gasolina	4WD	2996	294	400	07.20-09.21	*
5.0 V8 4x4 (508PN)	Gasolina	4WD	5000	276	375	12.13-01.16	*
2.0 P400e Hybrid 4x4 (PT204)	Gasol./el éc.	4WD	1997	221	300	10.17-	*
2.0 P400e Hybrid 4x4 (PT204)	Gasol./el éc.	4WD	1997	297	404	10.17-09.21	*
P360 MHEV 4x4 (PT306)	Gasol./el éc.	4WD	2996	265	360	12.19-09.21	*

# LISTA DE APLICACIONES - BUYERS GUIDE

3.0 P400 MHEV 4x4 (PT306)		Gasol./el éc.	4WD	2996	294	400	05.19-09.21	*
D250 MHEV 4x4 (AJ20D6)		Diesel/el éc.	4WD	2997	183	249	07.20-09.21	*
D300 MHEV 4x4 (AJ20D6)		Diesel/el éc.	4WD	2997	221	300	07.20-09.21	*
D350 MHEV 4x4 (AJ20D6)		Diesel/el éc.	4WD	2997	258	351	07.20-09.21	*
D350 MHEV 4x4		Diesel/el éc.	4WD	2997	258	351	11.20-	*
3.0 TDV6 4x4 (306DT)		Diesel	4WD	2993	155	211	10.13-01.16	*
3.0 SDV6 4x4 (306DT)		Diesel	4WD	2993	183	249	08.12-01.16	*
3.0 TDV6 4x4 (306DT)		Diesel	4WD	2993	190	258	08.12-09.21	*
3.0 SDV6 4x4 (306DT)		Diesel	4WD	2993	202	275	10.18-09.21	*
3.0 SDV6 4x4 (306DT)		Diesel	4WD	2993	215	292	10.12-09.21	*
D300 4x4 (AJ20D6)		Diesel	4WD	2997	221	300	07.20-	*
D350 4x4 (AJ20D6)		Diesel	4WD	2997	258	351	07.20-	*
<b>RANGE ROVER SPORT II (L494) 04.13-</b>					<b>SUV (Luxury Crossover SUV-J Segment)</b>			
2.0 Si4 4x4 (PT204)		Gasolina	4WD	1997	221	300	10.17-03.22	*
5.0 SCV8 4x4 (508PS)		Gasolina	4WD	4999	386	525	11.17-03.22	*
2.0 P400e PHEV 4x4 (PT204)		Gasol./el éc.	4WD	1997	221	300	10.17-	*
2.0 P400e PHEV 4x4 (PT204)		Gasol./el éc.	4WD	1997	297	404	10.17-03.22	*
3.0 P360 MHEV 4x4 (PT306)		Gasol./el éc.	4WD	2996	265	360	06.19-03.22	*
3.0 P400 MHEV 4x4 (AJ20P6)		Gasol./el éc.	4WD	2996	294	400	02.19-03.22	*
3.0 D250 MHEV 4x4 (AJ20D6)		Diesel/el éc.	4WD	2997	183	249	07.20-03.22	*
3.0 D300 MHEV 4x4 (AJ20D6)		Diesel/el éc.	4WD	2997	221	300	07.20-03.22	*
3.0 D350 MHEV 4x4 (AJ20D6)		Diesel/el éc.	4WD	2997	258	351	07.20-03.22	*
2.0 SD4 4x4 (204DTA)		Diesel	4WD	1999	177	241	08.16-03.22	*
3.0 SDV6 4x4 (306DT)		Diesel	4WD	2993	183	249	04.13-03.22	*
3.0 TDV6 4x4 (306DT)		Diesel	4WD	2993	190	258	04.13-03.22	*
3.0 SDV6 4x4 (306DT)		Diesel	4WD	2993	225	306	09.14-03.22	*
3.0 D250 4x4 (AJ20D6)		Diesel	4WD	2997	183	249	07.20-03.22	*
3.0 D300 4x4 (AJ20D6)		Diesel	4WD	2997	221	300	07.20-03.22	*
3.0 D350 4x4 (AJ20D6)		Diesel	4WD	2997	258	351	07.20-03.22	*