

LISTA DE APLICACIONES - BUYERS GUIDE

RB2024



8 424073 137425

Qty: 300

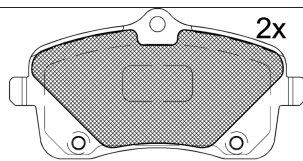
Weight: 1.693

O.E.M.

4254.78

MAKE

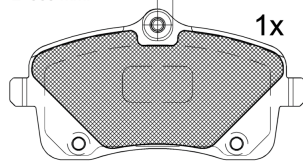
PEUGEOT



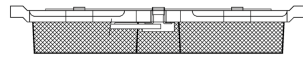
2x



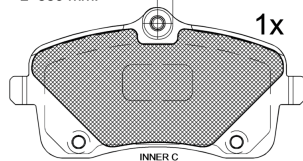
L=365 mm.



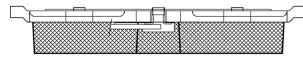
1x



L=330 mm.



1x

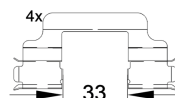


4x



M8

1-Ref. 690042



33

1-Ref. 690271 E

RB2024



E 90R-01111/3169

Trw

131.1x66.8x19.5

WVA

25328

25329

25330

Sin Filas



Trac.

CC

Kw

CV



Front / Rear

PEUGEOT

407 (6C_) 10.05-

2.0 HDi (RHR (DW10BTED4))

Diesel

FWD

1997

Coupé (Large family car-D Segment)

100

136

10.05-

*

407 (6D_) 02.04-12.11

1.8 (6D6FZB) (6FZ (EW7J4))

Gasolina

FWD

1749

85

116

03.04-07.05

*

1.8 16V (6D6FYC) (6FY (EW7A))

Gasolina

FWD

1749

92

125

08.05-12.10

*

2.0 (6DRFNB, 6DRFNE) (RFN (EW10J4))

Gasolina

FWD

1997

100

136

03.04-07.05

*

2.0 16V (6DRFJC, 6DRFJE, 6DRFJF) (RFJ (EW10A))

Gasolina

FWD

1997

103

140

09.05-12.10

*

2.0 16V (6DRFJC, 6DRFJF)

Gasolina

FWD

1997

105

143

08.08-12.09

*

2.0 Bioflex (6DRFJB) (RFJ (EW10A))

Gasol./Et anol

FWD

1997

103

140

09.07-02.11

*

2.0 Flex (6DRFJB) (RFJ (EW10A))

Gasol./Et anol

FWD

1997

103

140

10.05-02.11

*

1.6 HDi 110 (6D9HZC, 6D9HYC) (9HZ (DV6TED4))

Diesel

FWD

1560

80

109

05.04-12.10

*

2.0 HDi 135 (6DRHRH, 6DRHRE, 6DRHRG, 6DRHRJ) (RHR (DW10BTED4))

Diesel

FWD

1997

100

136

05.04-10.10

*

2.0 HDi (6DRHRH) (RHR (DW10BTED4))

Diesel

FWD

1997

103

140

06.09-12.10

*

407 SW (6E_, 6D_) 05.04-

1.8 (6FZ (EW7J4))

Gasolina

FWD

1749

85

116

05.04-07.05

*

1.8 16V (6FY (EW7A))

Gasolina

FWD

1749

92

125

08.05-12.10

*

2.0 (RFN (EW10J4))

Gasolina

FWD

1997

100

136

05.04-07.05

*

2.0 16V (RFJ (EW10A))

Gasolina

FWD

1997

103

140

08.05-12.10

*

2.0 Bioflex (RFJ (EW10A))

Gasol./Et anol

FWD

1997

103

140

01.08-12.10

*

2.0 Flex (RFJ (EW10A))

Gasol./Et anol

FWD

1997

103

140

10.05-02.11

*

[CAMBIADO]:Break (Large family car-D Segment)

LISTA DE APLICACIONES - BUYERS GUIDE

1.6 HDi 110 (9HZ (DV6TED4))	Diesel	FWD	1560	80	109	05.04-12.10	*
2.0 HDi 135 (RHR (DW10BTED4))	Diesel	FWD	1997	100	136	07.04-12.10	*
2.0 HDi (RHR (DW10BTED4))	Diesel	FWD	1997	103	140	08.08-12.10	*
407 SW (6E_) 08.04-12.10				[CAMBIADO]:Furgón/Break (Large family car-D Segment)			
2.0 HDi (RHR (DW10BTED4))	Diesel	FWD	1997	103	140	06.09-12.10	*
2.0 HDi (RHH (DW10CTED4))	Diesel	FWD	1997	120	163	06.09-12.10	*