

# LISTA DE APLICACIONES - BUYERS GUIDE

## RB2012

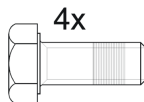
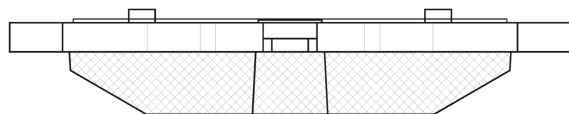
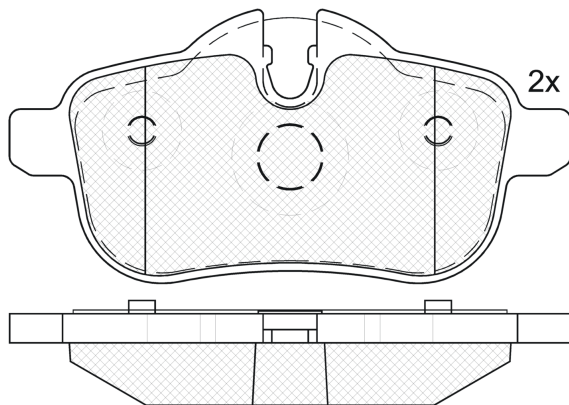
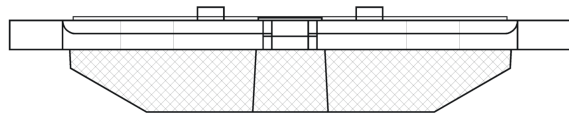
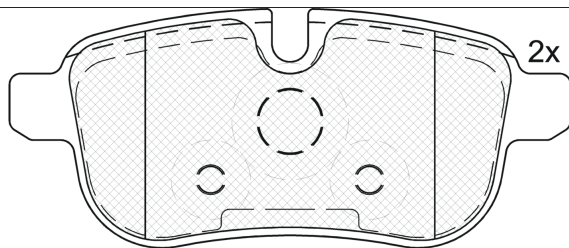


8 424073 137319

Qty: 300

Weight: 1.020

O.E.M.	MAKE
34 21 6 788 275	BMW
34 21 6 797 861	BMW



1-Ref. 690042

## RB2012

E 90R-01111/2710



Trw

106.1x45.2x18

106.1x51.7x18

WVA
24559
24560

FMSI
D1433-8550

Sin Filas



Trac.	CC	Kw	CV
-------	----	----	----



Front / Rear

### BMW

#### Z4 II (U.S.A.) 09.08-

#### Cabrio (Sports car-S Segment)

sDrive18i (N20 B20 A)	Gasolina	RWD	1997	115	156	04.13-08.16	*
sDrive20i (N20 B20 A)	Gasolina	RWD	1997	120	163	09.11-08.16	*
sDrive20i (N20 B20 A)	Gasolina	RWD	1997	135	184	09.11-08.16	*
sDrive28i	Gasolina	FWD	1997	179	243	09.12-	*
sDrive28i (N20 B20 A)	Gasolina	RWD	1997	180	245	09.11-08.16	*
sDrive 23 i (N52 B25 A)	Gasolina	RWD	2497	150	204	03.09-08.11	*
sDrive 23 i (N52 B25 BF)	Gasolina	RWD	2497	150	204	03.09-08.11	*
sDrive 35 i (N54 B30 A)	Gasolina	RWD	2979	225	306	02.09-08.16	*
sDrive 30 i (N52 B30 A)	Gasolina	RWD	2996	190	258	02.09-08.11	*
sDrive 30 i (N52 B30 B)	Gasolina	RWD	2996	190	258	02.09-08.11	*
sDrive 30 i (N52 B30 BF)	Gasolina	RWD	2996	190	258	02.09-08.11	*
sDrive 30 i (N52 B30 A)	Gasolina	RWD	2996	195	265	05.09-08.11	*