

# LISTA DE APLICACIONES - BUYERS GUIDE

## RB1423-118

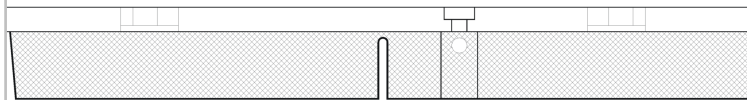
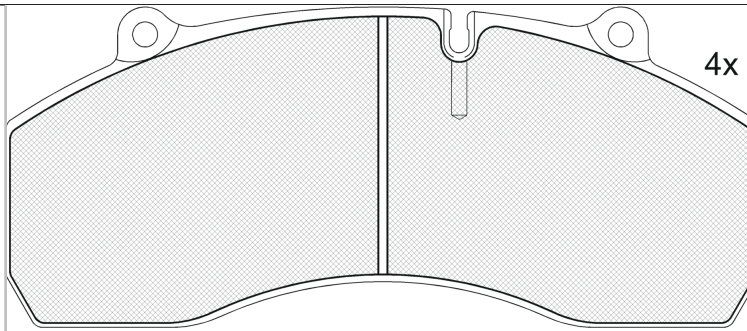


8 424073 130372

Qty: 660

Weight: 10.707

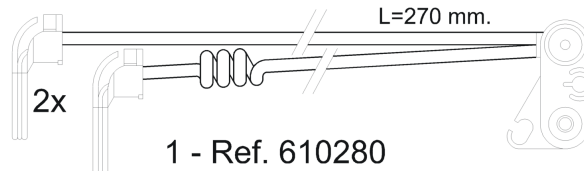
O.E.M.	MAKE
7 258 57	SCANIA
RS18892305731790	SCANIA



4x



1 - Ref. 690133 E



1 - Ref. 610280

## RB1423-118



90R-01178/658



Haldex DB22

247.5x105.1x30

**WVA**  
29120

Sin Filas

**FMSI**  
D1441-8577



Trac.	CC	Kw	CV
-------	----	----	----



Front / Rear

### KENWORTH

#### All models

-							01.53-	*	*
---	--	--	--	--	--	--	--------	---	---

### SCANIA

#### 4 Series 05.95-

#### Cabeza tractora

94 D/220 (DSC 9.11)	Diesel	8974	162	220	08.96-04.08	*	*
94 G/220 (DSC 9.11)	Diesel	8974	162	220	08.96-04.08	*	*
T 94 G/220 (DSC 9.11)	Diesel	8974	162	220	08.96-04.08	*	*
94 D/230 (DC 9.01)	Diesel	8974	169	230	08.99-04.08	*	*
94 D/230 (DC 9.04)	Diesel	8974	169	230	08.99-04.08	*	*
T 94 G/230 (DC 9.01)	Diesel	8974	169	230	04.99-04.08	*	*
94 D/260 (DC 9.02)	Diesel	8974	191	260	08.96-04.08	*	*
94 D/260 (DSC 9.12)	Diesel	8974	191	260	08.96-04.08	*	*
94 G/260 (DSC 9.12)	Diesel	8974	191	260	08.96-04.08	*	*
T 94 G/260 (DSC 9.12)	Diesel	8974	191	260	12.96-04.08	*	*
94 C/310 (DSC 9.13)	Diesel	8974	228	310	08.96-04.08	*	*
94 C/310 (DSC 9.15)	Diesel	8974	228	310	08.96-04.08	*	*
94 D/310 (DSC 9.13)	Diesel	8974	228	310	12.96-04.08	*	*
94 D/310 (DSC 9.15)	Diesel	8974	228	310	12.96-04.08	*	*
94 G/310 (DSC 9.13)	Diesel	8974	228	310	08.96-04.08	*	*
94 G/310 (DSC 9.15)	Diesel	8974	228	310	08.96-04.08	*	*
94 L/310 (DSC 9.13)	Diesel	8974	228	310	08.96-04.08	*	*
94 L/310 (DSC 9.15)	Diesel	8974	228	310	08.96-04.08	*	*
94 L/310 (DSC 9.13)	Diesel	8974	228	310	08.96-04.08	*	*
94 L/310 (DSC 9.15)	Diesel	8974	228	310	08.96-04.08	*	*

## LISTA DE APLICACIONES - BUYERS GUIDE

[illegible]

# LISTA DE APLICACIONES - BUYERS GUIDE

114 L/340 (DSC 11.79)	Diesel	11000	250	340	05.96-04.08	*	*
114 C/340 (DSC 11.79)	Diesel	11020	250	340	05.96-04.08	*	*
114 C/340 (DSC 11.79)	Diesel	11020	250	340	05.96-04.08	*	*
114 G/340 (DSC 11.79)	Diesel	11020	250	340	05.96-04.08	*	*
114 G/340 (DSC 11.79)	Diesel	11020	250	340	05.96-04.08	*	*
114 G/340 (DSC 11.79)	Diesel	11020	250	340	05.96-04.08	*	*
114 L/340 (DSC 11.79)	Diesel	11020	250	340	05.96-04.08	*	*
114 L/340 (DSC 11.79)	Diesel	11020	250	340	05.96-04.08	*	*
T 114 G/340 (DSC 11.79)	Diesel	11020	250	340	05.96-04.08	*	*
T 114 G/340 (DSC 11.79)	Diesel	11020	250	340	05.96-04.08	*	*
T 114 G/340 (DSC 11.79)	Diesel	11020	250	340	05.96-04.08	*	*
T 114 L/340 (DSC 11.79)	Diesel	11020	250	340	05.96-04.08	*	*
124 C/360 (DSC 12.02)	Diesel	11705	265	360	09.96-04.08	*	*
124 C/360 (DSC 12.02)	Diesel	11705	265	360	09.96-04.08	*	*
124 G/360 (DSC 12.02)	Diesel	11705	265	360	05.96-04.08	*	*
124 G/360 (DSC 12.02)	Diesel	11705	265	360	05.96-04.08	*	*
124 G/360 (DSC 12.02)	Diesel	11705	265	360	05.96-04.08	*	*
124 L/360 (DSC 12.02)	Diesel	11705	265	360	09.96-04.08	*	*
124 L/360 (DSC 12.02)	Diesel	11705	265	360	09.96-04.08	*	*
124 L/360 (DSC 12.02)	Diesel	11705	265	360	09.96-04.08	*	*
T 124 C/360 (DSC 12.02)	Diesel	11705	265	360	09.95-04.08	*	*
T 124 C/360 (DSC 12.02)	Diesel	11705	265	360	09.95-04.08	*	*
T 124 G/360 (DSC 12.02)	Diesel	11705	265	360	03.97-04.08	*	*
T 124 G/360 (DSC 12.02)	Diesel	11705	265	360	03.97-04.08	*	*
T 124 G/360 (DSC 12.02)	Diesel	11705	265	360	03.97-04.08	*	*
T 124 L/360 (DSC 12.02)	Diesel	11705	265	360	02.97-04.08	*	*
T 124 L/360 (DSC 12.02)	Diesel	11705	265	360	05.95-04.08	*	*
T 124 L/360 (DSC 12.02)	Diesel	11705	265	360	09.95-04.08	*	*
124 C/400 (DSC 12.01)	Diesel	11705	294	400	09.96-04.08	*	*
124 C/400 (DSC 12.01)	Diesel	11705	294	400	09.96-04.08	*	*
124 G/400 (DSC 12.01)	Diesel	11705	294	400	05.96-04.08	*	*
124 G/400 (DSC 12.01)	Diesel	11705	294	400	05.96-04.08	*	*
124 G/400 (DSC 12.01)	Diesel	11705	294	400	05.96-04.08	*	*
124 L/400 (DSC 12.01)	Diesel	11705	294	400	09.96-04.08	*	*
124 L/400 (DSC 12.01)	Diesel	11705	294	400	09.96-04.08	*	*
124 L/400 (DSC 12.01)	Diesel	11705	294	400	09.96-04.08	*	*
T 124 C/400 (DSC 12.01)	Diesel	11705	294	400	05.96-04.08	*	*
T 124 C/400 (DSC 12.01)	Diesel	11705	294	400	05.96-04.08	*	*
T 124 G/400 (DSC 12.01)	Diesel	11705	294	400	03.97-04.08	*	*
T 124 G/400 (DSC 12.01)	Diesel	11705	294	400	03.97-04.08	*	*
T 124 G/400 (DSC 12.01)	Diesel	11705	294	400	03.97-04.08	*	*
T 124 L/400 (DSC 12.01)	Diesel	11705	294	400	02.97-04.08	*	*
T 124 L/400 (DSC 12.01)	Diesel	11705	294	400	05.96-04.08	*	*
T 124 L/400 (DSC 12.01)	Diesel	11705	294	400	05.96-04.08	*	*
124 L/420 (DC 12.01)	Diesel	11705	308	420	09.97-04.08	*	*
124 L/420 (DC 12.03)	Diesel	11705	308	420	09.97-04.08	*	*
124 L/420 (DSC 12.05)	Diesel	11705	308	420	09.97-04.08	*	*
124 L/420 (DC 12.01)	Diesel	11705	309	420	09.97-04.08	*	*
124 L/420 (DSC 12.05)	Diesel	11705	309	420	09.97-04.08	*	*
124 L/420 (DSC 12.05)	Diesel	11705	309	420	09.97-04.08	*	*
T 124 C/420 (DC 12.01)	Diesel	11705	309	420	05.96-04.08	*	*

# LISTA DE APLICACIONES - BUYERS GUIDE

T 124 C/420 (DSC 12.05)	Diesel	11705	309	420	05.96-04.08	*	*
T 124 G/420 (DC 12.01)	Diesel	11705	309	420	09.97-04.08	*	*
T 124 G/420 (DSC 12.05)	Diesel	11705	309	420	09.97-04.08	*	*
T 124 G/420 (DC 12.01)	Diesel	11705	309	420	09.97-04.08	*	*
T 124 G/420 (DSC 12.05)	Diesel	11705	309	420	09.97-04.08	*	*
T 124 G/420 (DC 12.01)	Diesel	11705	309	420	09.97-04.08	*	*
T 124 G/420 (DSC 12.05)	Diesel	11705	309	420	09.97-04.08	*	*
T 124 L/420 (DC 12.01)	Diesel	11705	309	420	05.96-04.08	*	*
T 124 L/420 (DSC 12.05)	Diesel	11705	309	420	05.96-04.08	*	*
T 124 L/420 (DC 12.01)	Diesel	11705	309	420	09.97-04.08	*	*
T 124 L/420 (DSC 12.05)	Diesel	11705	309	420	09.97-04.08	*	*
T 124 L/420 (DC 12.01)	Diesel	11705	309	420	09.97-04.08	*	*
T 124 L/420 (DSC 12.05)	Diesel	11705	309	420	09.97-04.08	*	*
124 L/440 (DT 12.08)	Diesel	11705	324	440	01.01-04.08	*	*
124 L/440 (DT 12.08)	Diesel	11705	324	440	01.01-04.08	*	*
124 L/470 (DT 12.02)	Diesel	11705	345	470	01.01-04.08	*	*
124 L/470 (DT 12.02)	Diesel	11705	345	470	01.01-04.08	*	*
T 124 L/470 (DT 12.02)	Diesel	11705	345	470	01.01-04.08	*	*
144 C/460 (DSC 14.15)	Diesel	14190	338	460	09.96-04.08	*	*
144 C/460 (DSC 14.15)	Diesel	14190	338	460	09.96-04.08	*	*
144 G/460 (DSC 14.15)	Diesel	14190	338	460	04.96-04.08	*	*
144 G/460 (DSC 14.15)	Diesel	14190	338	460	04.96-04.08	*	*
144 G/460 (DSC 14.15)	Diesel	14190	338	460	04.96-04.08	*	*
144 L/460 (DSC 14.15)	Diesel	14190	338	460	11.95-04.08	*	*
144 L/460 (DSC 14.15)	Diesel	14190	338	460	11.95-04.08	*	*
144 L/460 (DSC 14.15)	Diesel	14190	338	460	11.95-04.08	*	*
T 144 C/460 (DSC 14.15)	Diesel	14190	338	460	09.95-04.08	*	*
T 144 C/460 (DSC 14.15)	Diesel	14190	338	460	09.95-04.08	*	*
T 144 G/460 (DSC 14.15)	Diesel	14190	338	460	03.97-04.08	*	*
T 144 G/460 (DSC 14.15)	Diesel	14190	338	460	03.97-04.08	*	*
T 144 G/460 (DSC 14.15)	Diesel	14190	338	460	03.97-04.08	*	*
T 144 L/460 (DSC 14.15)	Diesel	14190	338	460	03.97-04.08	*	*
T 144 L/460 (DSC 14.15)	Diesel	14190	338	460	09.95-04.08	*	*
T 144 L/460 (DSC 14.15)	Diesel	14190	338	460	09.95-04.08	*	*
144 C/530 (DSC 14.13)	Diesel	14190	390	530	09.96-04.08	*	*
144 C/530 (DSC 14.13)	Diesel	14190	390	530	09.96-04.08	*	*
144 G/530 (DSC 14.13)	Diesel	14190	390	530	04.96-04.08	*	*
144 G/530 (DSC 14.13)	Diesel	14190	390	530	04.96-04.08	*	*
144 G/530 (DSC 14.13)	Diesel	14190	390	530	04.96-04.08	*	*
144 L/530 (DSC 14.13)	Diesel	14190	390	530	11.95-04.08	*	*
144 L/530 (DSC 14.13)	Diesel	14190	390	530	11.95-04.08	*	*
144 L/530 (DSC 14.13)	Diesel	14190	390	530	11.95-04.08	*	*
T 144 C/530 (DSC 14.13)	Diesel	14190	390	530	09.95-04.08	*	*
T 144 C/530 (DSC 14.13)	Diesel	14190	390	530	09.95-04.08	*	*
T 144 G/530 (DSC 14.13)	Diesel	14190	390	530	03.97-04.08	*	*
T 144 G/530 (DSC 14.13)	Diesel	14190	390	530	03.97-04.08	*	*
T 144 G/530 (DSC 14.13)	Diesel	14190	390	530	03.97-04.08	*	*
T 144 L/530 (DSC 14.13)	Diesel	14190	390	530	03.97-04.08	*	*
T 144 L/530 (DSC 14.13)	Diesel	14190	390	530	09.95-04.08	*	*
T 144 L/530 (DSC 14.13)	Diesel	14190	390	530	09.95-04.08	*	*
164 C/480 (DC 16.02)	Diesel	15607	353	480	05.00-04.08	*	*

# LISTA DE APLICACIONES - BUYERS GUIDE

164 C/480 (DC 16.02)		Diesel		15607	353	480	05.00-04.08	*	*
164 C/480 (DC 16.02)		Diesel		15607	353	480	05.00-04.08	*	*
164 G/480 (DC 16.02)		Diesel		15607	353	480	05.00-04.08	*	*
164 L/480 (DC 16.02)		Diesel		15607	353	480	05.00-04.08	*	*
164 L/480 (DC 16.02)		Diesel		15607	353	480	05.00-04.08	*	*
164 L/480 (DC 16.02)		Diesel		15607	353	480	05.00-04.08	*	*
164 C/580 (DC 16.01)		Diesel		15607	426	580	05.00-04.08	*	*
164 C/580 (DC 16.01)		Diesel		15607	426	580	05.00-04.08	*	*
164 G/580 (DC 16.01)		Diesel		15607	426	580	05.00-04.08	*	*
164 G/580 (DC 16.01)		Diesel		15607	426	580	05.00-04.08	*	*
164 G/580 (DC 16.01)		Diesel		15607	426	580	05.00-04.08	*	*
164 L/580 (DC 16.01)		Diesel		15607	426	580	05.00-04.08	*	*
164 L/580 (DC 16.01)		Diesel		15607	426	580	05.00-04.08	*	*
<b>4 Series 05.95-</b>					<b>Caja/Chasis</b>				
94 D/220 (DSC 9.11)		Diesel		8974	162	220	08.96-04.08	*	*
94 D/220 (DSC 9.11)		Diesel		8974	162	220	08.96-04.08	*	*
94 G/220 (DSC 9.11)		Diesel		8974	162	220	08.96-04.08	*	*
94 G/220 (DSC 9.11)		Diesel		8974	162	220	01.98-04.08	*	*
T 94 G/220 (DSC 9.11)		Diesel		8974	162	220	08.96-04.08	*	*
T 94 G/220 (DSC 9.11)		Diesel		8974	162	220	08.96-04.08	*	*
94 D/230 (DC 9.01)		Diesel		8974	169	230	08.99-04.08	*	*
94 D/230 (DC 9.04)		Diesel		8974	169	230	08.99-04.08	*	*
94 D/230 (DC 9.01)		Diesel		8974	169	230	08.99-04.08	*	*
94 D/230 (DC 9.04)		Diesel		8974	169	230	08.99-04.08	*	*
T 94 G/230 (DC 9.01)		Diesel		8974	169	230	04.99-04.08	*	*
T 94 G/230 (DC 9.01)		Diesel		8974	169	230	04.99-04.08	*	*
94 C/260 (DSC 9.12)		Diesel		8974	191	260	12.96-04.08	*	*
94 C/260 (DSC 9.12)		Diesel		8974	191	260	12.96-04.08	*	*
94 D/260 (DC 9.02)		Diesel		8974	191	260	08.96-04.08	*	*
94 D/260 (DSC 9.12)		Diesel		8974	191	260	08.96-04.08	*	*
94 D/260 (DSC 9.12)		Diesel		8974	191	260	08.96-04.08	*	*
94 G/260 (DSC 9.12)		Diesel		8974	191	260	08.96-04.08	*	*
94 G/260 (DSC 9.12)		Diesel		8974	191	260	01.98-04.08	*	*
T 94 C/260 (DSC 9.12)		Diesel		8974	191	260	12.96-04.08	*	*
T 94 C/260 (DSC 9.12)		Diesel		8974	191	260	12.96-04.08	*	*
T 94 G/260 (DSC 9.12)		Diesel		8974	191	260	12.96-04.08	*	*
T 94 G/260 (DSC 9.12)		Diesel		8974	191	260	12.96-04.08	*	*
T 94 G/260 (DSC 9.12)		Diesel		8974	191	260	12.96-04.08	*	*
T 94 G/310 (DC 9.03)		Diesel		8974	221	300	12.96-04.08	*	*
T 94 G/310 (DSC 9.13)		Diesel		8974	221	300	12.96-04.08	*	*
T 94 G/310 (DSC 9.15)		Diesel		8974	221	300	12.96-04.08	*	*
94 C/310 (DSC 9.13)		Diesel		8974	228	310	08.96-04.08	*	*
94 C/310 (DSC 9.15)		Diesel		8974	228	310	08.96-04.08	*	*
94 C/310 (DSC 9.13)		Diesel		8974	228	310	08.96-04.08	*	*
94 C/310 (DSC 9.15)		Diesel		8974	228	310	08.96-04.08	*	*
94 D/310 (DSC 9.13)		Diesel		8974	228	310	12.96-04.08	*	*
94 D/310 (DSC 9.15)		Diesel		8974	228	310	12.96-04.08	*	*
94 D/310 (DSC 9.13)		Diesel		8974	228	310	01.98-04.08	*	*
94 D/310 (DSC 9.15)		Diesel		8974	228	310	01.98-04.08	*	*
94 G/310 (DSC 9.13)		Diesel		8974	228	310	08.96-04.08	*	*
94 G/310 (DSC 9.15)		Diesel		8974	228	310	08.96-04.08	*	*

## LISTA DE APLICACIONES - BUYERS GUIDE

[illegible]

# LISTA DE APLICACIONES - BUYERS GUIDE

114 L/380 (DC 11.04)	Diesel	10640	280	381	03.98-04.08	*	*
T 114 C/380 (DC 11.02)	Diesel	10640	280	380	03.98-04.08	*	*
T 114 C/380 (DC 11.02)	Diesel	10640	280	380	03.98-04.08	*	*
T 114 G/380 (DC 11.02)	Diesel	10640	280	380	03.98-04.08	*	*
T 114 G/380 (DC 11.02)	Diesel	10640	280	380	03.98-04.08	*	*
T 114 G/380 (DC 11.02)	Diesel	10640	280	380	03.98-04.08	*	*
114 G/340 (DSC 11.79)	Diesel	11000	250	340	05.96-04.08	*	*
114 C/340 (DSC 11.79)	Diesel	11020	250	340	05.96-04.08	*	*
114 C/340 (DSC 11.79)	Diesel	11020	250	340	05.96-04.08	*	*
114 G/340 (DSC 11.79)	Diesel	11020	250	340	05.96-04.08	*	*
114 G/340 (DSC 11.79)	Diesel	11020	250	340	05.96-04.08	*	*
114 G/340 (DSC 11.79)	Diesel	11020	250	340	05.96-04.08	*	*
114 G/340 (DSC 11.79)	Diesel	11020	250	340	05.96-04.08	*	*
114 L/340 (DSC 11.79)	Diesel	11020	250	340	05.96-04.06	*	*
114 L/340 (DSC 11.79)	Diesel	11020	250	340	05.96-04.08	*	*
T 114 G/340 (DSC 11.79)	Diesel	11020	250	340	05.96-04.08	*	*
T 114 G/340 (DSC 11.79)	Diesel	11020	250	340	05.96-04.08	*	*
T 114 G/340 (DSC 11.79)	Diesel	11020	250	340	05.96-04.08	*	*
124 L/420 (DC 12.01)	Diesel	11700	309	420	09.97-04.08	*	*
124 L/420 (DSC 12.05)	Diesel	11700	309	420	09.97-04.08	*	*
124 C/360 (DSC 12.02)	Diesel	11705	265	360	09.96-04.08	*	*
124 C/360 (DSC 12.02)	Diesel	11705	265	360	09.96-04.08	*	*
124 G/360 (DSC 12.02)	Diesel	11705	265	360	05.96-04.08	*	*
124 G/360 (DSC 12.02)	Diesel	11705	265	360	05.96-04.08	*	*
124 G/360 (DSC 12.02)	Diesel	11705	265	360	05.96-04.08	*	*
124 G/360 (DSC 12.02)	Diesel	11705	265	360	05.96-04.08	*	*
124 G/360 (DSC 12.02)	Diesel	11705	265	360	05.96-04.08	*	*
124 L/360 (DSC 12.02)	Diesel	11705	265	360	09.96-04.08	*	*
124 L/360 (DSC 12.02)	Diesel	11705	265	360	09.96-04.08	*	*
124 L/360 (DSC 12.02)	Diesel	11705	265	360	09.96-04.08	*	*
T 124 C/360 (DSC 12.02)	Diesel	11705	265	360	09.95-04.08	*	*
T 124 C/360 (DSC 12.02)	Diesel	11705	265	360	09.95-04.08	*	*
T 124 G/360 (DSC 12.02)	Diesel	11705	265	360	03.97-04.08	*	*
T 124 G/360 (DSC 12.02)	Diesel	11705	265	360	03.97-04.08	*	*
T 124 G/360 (DSC 12.02)	Diesel	11705	265	360	03.97-04.08	*	*
124 C/400 (DSC 12.01)	Diesel	11705	294	400	09.96-04.08	*	*
124 C/400 (DSC 12.01)	Diesel	11705	294	400	09.96-04.08	*	*
124 C/400 (DSC 12.01)	Diesel	11705	294	400	09.96-04.08	*	*
124 G/400 (DSC 12.01)	Diesel	11705	294	400	05.96-04.08	*	*
124 G/400 (DSC 12.01)	Diesel	11705	294	400	05.96-04.08	*	*
124 G/400 (DSC 12.01)	Diesel	11705	294	400	05.96-04.08	*	*
124 G/400 (DSC 12.01)	Diesel	11705	294	400	05.96-04.08	*	*
124 L/400 (DSC 12.01)	Diesel	11705	294	400	09.96-04.08	*	*
124 L/400 (DSC 12.01)	Diesel	11705	294	400	09.96-04.08	*	*
124 L/400 (DSC 12.01)	Diesel	11705	294	400	09.96-04.08	*	*
T 124 C/400 (DSC 12.01)	Diesel	11705	294	400	05.96-04.08	*	*
T 124 C/400 (DSC 12.01)	Diesel	11705	294	400	05.96-04.08	*	*
T 124 G/400 (DSC 12.01)	Diesel	11705	294	400	03.97-04.08	*	*
T 124 G/400 (DSC 12.01)	Diesel	11705	294	400	03.97-04.08	*	*
T 124 G/400 (DSC 12.01)	Diesel	11705	294	400	03.97-04.08	*	*

# LISTA DE APLICACIONES - BUYERS GUIDE

124 L/420 (DC 12.01)	Diesel	11705	309	420	09.97-04.08	*	*
124 L/420 (DSC 12.05)	Diesel	11705	309	420	09.97-04.08	*	*
124 L/420 (DSC 12.05)	Diesel	11705	309	420	09.97-04.08	*	*
T 124 C/420 (DC 12.01)	Diesel	11705	309	420	05.96-04.08	*	*
T 124 C/420 (DSC 12.05)	Diesel	11705	309	420	05.96-04.08	*	*
T 124 C/420 (DC 12.01)	Diesel	11705	309	420	05.96-04.08	*	*
T 124 C/420 (DSC 12.05)	Diesel	11705	309	420	05.96-04.08	*	*
T 124 G/420 (DC 12.01)	Diesel	11705	309	420	09.97-04.08	*	*
T 124 G/420 (DSC 12.05)	Diesel	11705	309	420	09.97-04.08	*	*
T 124 G/420 (DC 12.01)	Diesel	11705	309	420	05.96-04.08	*	*
T 124 G/420 (DSC 12.05)	Diesel	11705	309	420	05.96-04.08	*	*
124 L/440 (DT 12.08)	Diesel	11705	324	440	01.01-04.08	*	*
124 L/440 (DT 12.08)	Diesel	11705	324	440	01.01-04.08	*	*
124 L/470 (DT 12.02)	Diesel	11705	345	470	01.01-04.08	*	*
124 L/470 (DT 12.02)	Diesel	11705	345	470	01.01-04.08	*	*
144 C/460 (DSC 14.15)	Diesel	14190	338	460	09.96-04.08	*	*
144 C/460 (DSC 14.15)	Diesel	14190	338	460	09.96-04.08	*	*
144 G/460 (DSC 14.15)	Diesel	14190	338	460	04.96-04.08	*	*
144 G/460 (DSC 14.15)	Diesel	14190	338	460	04.96-04.08	*	*
144 G/460 (DSC 14.15)	Diesel	14190	338	460	04.96-04.08	*	*
144 G/460 (DSC 14.15)	Diesel	14190	338	460	04.96-04.08	*	*
144 G/460 (DSC 14.15)	Diesel	14190	338	460	04.96-04.08	*	*
144 L/460 (DSC 14.15)	Diesel	14190	338	460	11.95-04.08	*	*
144 L/460 (DSC 14.15)	Diesel	14190	338	460	11.95-04.08	*	*
T 144 C/460 (DSC 14.15)	Diesel	14190	338	460	09.95-04.08	*	*
T 144 C/460 (DSC 14.15)	Diesel	14190	338	460	09.95-04.08	*	*
T 144 G/460 (DSC 14.15)	Diesel	14190	338	460	03.97-04.08	*	*
T 144 G/460 (DSC 14.15)	Diesel	14190	338	460	03.97-04.08	*	*
144 C/530 (DSC 14.13)	Diesel	14190	390	530	09.96-04.08	*	*
144 C/530 (DSC 14.13)	Diesel	14190	390	530	09.96-04.08	*	*
144 G/530 (DSC 14.13)	Diesel	14190	390	530	04.96-04.08	*	*
144 G/530 (DSC 14.13)	Diesel	14190	390	530	04.96-04.08	*	*
144 G/530 (DSC 14.13)	Diesel	14190	390	530	04.96-04.08	*	*
144 G/530 (DSC 14.13)	Diesel	14190	390	530	04.96-04.08	*	*
144 G/530 (DSC 14.13)	Diesel	14190	390	530	04.96-04.08	*	*
144 L/530 (DSC 14.13)	Diesel	14190	390	530	11.95-04.08	*	*
144 L/530 (DSC 14.13)	Diesel	14190	390	530	11.95-04.08	*	*
T 144 C/530 (DSC 14.13)	Diesel	14190	390	530	09.95-04.08	*	*
T 144 C/530 (DSC 14.13)	Diesel	14190	390	530	09.95-04.08	*	*
T 144 G/530 (DSC 14.13)	Diesel	14190	390	530	03.97-04.08	*	*
T 144 G/530 (DSC 14.13)	Diesel	14190	390	530	03.97-04.08	*	*
T 144 G/530 (DSC 14.13)	Diesel	14190	390	530	03.97-04.08	*	*
144 L/460 (DSC 14.15)	Diesel	14200	338	460	11.95-04.08	*	*
144 L/530 (DSC 14.13)	Diesel	14200	390	530	11.95-04.08	*	*
164 C/480 (DC 16.02)	Diesel	15607	353	480	05.00-04.08	*	*
164 C/480 (DC 16.02)	Diesel	15607	353	480	05.00-04.08	*	*
164 C/480 (DC 16.02)	Diesel	15607	353	480	05.00-04.08	*	*
164 G/480 (DC 16.02)	Diesel	15607	353	480	05.00-04.08	*	*
164 G/480 (DC 16.02)	Diesel	15607	353	480	05.00-04.08	*	*
164 L/480 (DC 16.02)	Diesel	15607	353	480	05.00-04.08	*	*
164 L/480 (DC 16.02)	Diesel	15607	353	480	05.00-04.08	*	*



# LISTA DE APLICACIONES - BUYERS GUIDE

164 L/480 (DC 16.02)	Diesel	15607	353	480	05.00-04.08	*	*
164 C/580 (DC 16.01)	Diesel	15607	426	580	05.00-04.08	*	*
164 C/580 (DC 16.01)	Diesel	15607	426	580	05.00-04.08	*	*
164 G/580 (DC 16.01)	Diesel	15607	426	580	05.00-04.08	*	*
164 L/580 (DC 16.01)	Diesel	15607	426	580	05.00-04.08	*	*
164 L/580 (DC 16.01)	Diesel	15607	426	580	05.00-04.08	*	*
164 L/580 (DC 16.01)	Diesel	15607	426	580	05.00-04.08	*	*
<b>4 Series 05.95-</b>				<b>Camión volquete</b>			
94 C/260 (DSC 9.12)	Diesel	8974	191	260	12.96-04.08	*	*
94 C/260 (DSC 9.12)	Diesel	8974	191	260	12.96-04.08	*	*
94 C/260 (DC 9.02)	Diesel	8974	191	260	12.96-04.08	*	*
94 C/260 (DSC 9.12)	Diesel	8974	191	260	12.96-04.08	*	*
94 C/260 (DSC 9.12)	Diesel	8974	191	260	12.96-04.08	*	*
94 C/260 (DSC 9.12)	Diesel	8974	191	260	12.96-04.08	*	*
T 94 C/260 (DSC 9.12)	Diesel	8974	191	260	12.96-04.08	*	*
94 C/310 (DSC 9.13)	Diesel	8974	228	310	08.96-04.08	*	*
94 C/310 (DSC 9.15)	Diesel	8974	228	310	08.96-04.08	*	*
94 C/310 (DSC 9.13)	Diesel	8974	228	310	08.96-04.08	*	*
94 C/310 (DSC 9.15)	Diesel	8974	228	310	08.96-04.08	*	*
94 C/310 (DSC 9.13)	Diesel	8974	228	310	08.96-04.08	*	*
94 C/310 (DSC 9.15)	Diesel	8974	228	310	08.96-04.08	*	*
94 C/310 (DSC 9.13)	Diesel	8974	228	310	08.96-04.08	*	*
94 C/310 (DSC 9.15)	Diesel	8974	228	310	08.96-04.08	*	*
94 C/310 (DSC 9.13)	Diesel	8974	228	310	08.96-04.08	*	*
94 C/310 (DSC 9.15)	Diesel	8974	228	310	08.96-04.08	*	*
T 94 C/310 (DSC 9.13)	Diesel	8974	228	310	09.96-04.08	*	*
114 C/340 (DC 11.01)	Diesel	10640	250	340	03.98-04.08	*	*
114 C/340 (DC 11.03)	Diesel	10640	250	340	03.98-04.08	*	*
114 C/340 (DC 11.01)	Diesel	10640	250	340	03.98-04.08	*	*
114 C/340 (DC 11.03)	Diesel	10640	250	340	03.98-04.08	*	*
114 C/340 (DC 11.01)	Diesel	10640	250	340	03.98-04.08	*	*
114 C/340 (DC 11.03)	Diesel	10640	250	340	03.98-04.08	*	*
114 C/340 (DC 11.01)	Diesel	10640	250	340	03.98-04.08	*	*
114 C/340 (DC 11.03)	Diesel	10640	250	340	03.98-04.08	*	*
114 C/340 (DC 11.01)	Diesel	10640	250	340	03.98-04.08	*	*
114 C/340 (DC 11.03)	Diesel	10640	250	340	03.98-04.08	*	*
T 114 C/340 (DC 11.01)	Diesel	10640	250	340	03.98-04.08	*	*
T 114 C/340 (DC 11.03)	Diesel	10640	250	340	03.98-04.08	*	*
114 C/380 (DC 11.02)	Diesel	10640	280	381	03.98-04.08	*	*
114 C/380 (DC 11.02)	Diesel	10640	280	381	03.98-04.08	*	*
114 C/380 (DC 11.02)	Diesel	10640	280	381	03.98-04.08	*	*
114 C/380 (DC 11.02)	Diesel	10640	280	381	03.98-04.08	*	*
114 C/380 (DC 11.02)	Diesel	10640	280	381	03.98-04.08	*	*
114 C/380 (DC 11.04)	Diesel	10640	280	381	03.98-04.08	*	*
T 114 C/380 (DC 11.02)	Diesel	10640	280	380	03.98-04.08	*	*
114 C/340 (DSC 11.79)	Diesel	11020	250	340	05.96-04.08	*	*
114 C/340 (DSC 11.79)	Diesel	11020	250	340	05.96-04.08	*	*
114 C/340 (DSC 11.79)	Diesel	11020	250	340	05.96-04.08	*	*
114 C/340 (DSC 11.79)	Diesel	11020	250	340	05.96-04.08	*	*
114 C/340 (DSC 11.79)	Diesel	11020	250	340	05.96-04.08	*	*
124 C/360 (DSC 12.02)	Diesel	11705	265	360	09.96-04.08	*	*

# LISTA DE APLICACIONES - BUYERS GUIDE

124 C/360 (DSC 12.02)	Diesel	11705	265	360	09.96-04.08	*	*
124 C/360 (DSC 12.02)	Diesel	11705	265	360	09.96-04.08	*	*
124 C/360 (DSC 12.02)	Diesel	11705	265	360	09.96-04.08	*	*
124 C/360 (DSC 12.02)	Diesel	11705	265	360	09.96-04.08	*	*
T 124 C/360 (DSC 12.02)	Diesel	11705	265	360	09.95-04.08	*	*
124 C/400 (DSC 12.01)	Diesel	11705	294	400	09.96-04.08	*	*
124 C/400 (DSC 12.01)	Diesel	11705	294	400	09.96-04.08	*	*
124 C/400 (DSC 12.01)	Diesel	11705	294	400	09.96-04.08	*	*
124 C/400 (DSC 12.01)	Diesel	11705	294	400	09.96-04.08	*	*
124 C/400 (DSC 12.01)	Diesel	11705	294	400	09.96-04.08	*	*
T 124 C/400 (DSC 12.01)	Diesel	11705	294	400	05.96-04.08	*	*
T 124 C/420 (DC 12.01)	Diesel	11705	309	420	05.96-04.08	*	*
T 124 C/420 (DSC 12.05)	Diesel	11705	309	420	05.96-04.08	*	*
144 C/460 (DSC 14.15)	Diesel	14190	338	460	09.96-04.08	*	*
144 C/460 (DSC 14.15)	Diesel	14190	338	460	09.96-04.08	*	*
144 C/530 (DSC 14.13)	Diesel	14190	390	530	09.96-04.08	*	*
144 C/530 (DSC 14.13)	Diesel	14190	390	530	09.96-04.08	*	*
164 C/480 (DC 16.02)	Diesel	15607	353	480	05.00-04.08	*	*
164 C/480 (DC 16.02)	Diesel	15607	353	480	05.00-04.08	*	*
164 C/480 (DC 16.02)	Diesel	15607	353	480	05.00-04.08	*	*
164 C/480 (DC 16.02)	Diesel	15607	353	480	05.00-04.08	*	*
164 C/480 (DC 16.02)	Diesel	15607	353	480	05.00-04.08	*	*