

LISTA DE APLICACIONES - BUYERS GUIDE

RB1042-111

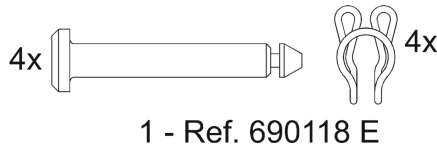
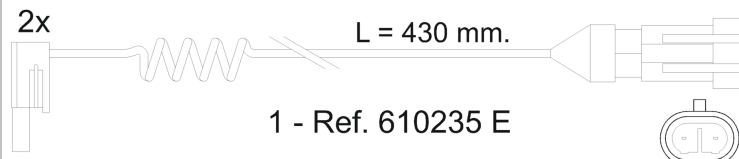
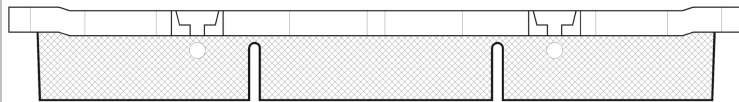
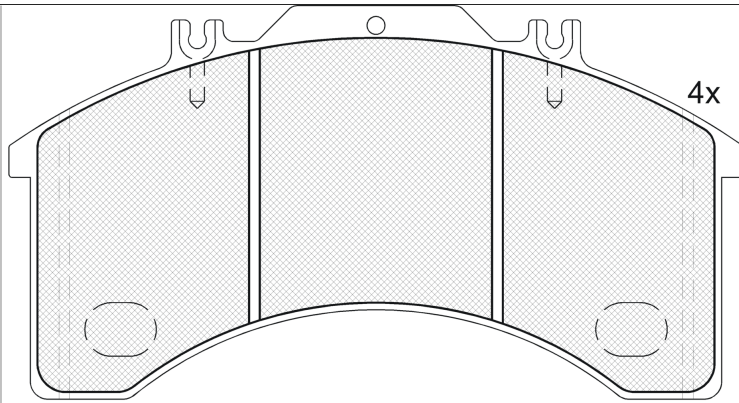


8 424073 125767

Qty: 650

Weight:

O.E.M.	MAKE
190 6170	IVECO
485 691 1	IVECO



RB1042-111



Bendix ADB3700

E 90R-01179/683

205.6x109.8x25

WVA

29032

Sin Filas



Trac.

CC

Kw

CV



Front / Rear

IVECO

10.00-07.07

Veh. Municipal

100 E 21 tector (F4AE0681D)	Diesel	5883	154	209	09.00-07.07	*
150 E 27 (8360.46)	Diesel	7685	196	267	09.06-07.07	*

EuroCargo I-III 01.91-09.15

Cabeza tractora

260 E 23 (8060.45S TCA)	Diesel	5861	167	227	01.92-09.15	*
260 E 23 (8060.45S.6000)	Diesel	5861	167	227	01.92-09.15	*
260 E 23 T (8060.45S TCA)	Diesel	5861	167	227	01.91-09.15	*
260 E 23 T (8060.45S.6000)	Diesel	5861	167	227	01.91-09.15	*
280 E 23, 280 E 23 P (8060.45S TCA)	Diesel	5861	167	227	01.09-09.15	*
280 E 23, 280 E 23 P (8060.45S.6000)	Diesel	5861	167	227	01.09-09.15	*
280 E 23 T (8060.45S.6000)	Diesel	5861	167	227	01.91-09.15	*
320 E 27, 320 E 27 P (8360.46.417)	Diesel	7685	196	267	01.92-09.15	*
320 E 27, 320 E 27 P (8360.46.417 TCA)	Diesel	7685	196	267	01.92-09.15	*
320 E 27 T (8360.46.417)	Diesel	7685	196	267	01.91-09.15	*

EuroCargo I-III 01.91-09.15

Caja/Chasis

120 E 15 (8060.25R.4200)	Diesel	5861	105	143	01.91-09.15	*
120 E 15 (8060.25R.4280)	Diesel	5861	105	143	01.91-09.15	*
130 E 15 (8060.25R.4280)	Diesel	5861	105	143	01.91-09.15	*
150 E 15 (8060.25R.4280)	Diesel	5861	105	143	01.91-09.15	*
150 E 18, 150 E 18 P (8060.25V.4000)	Diesel	5861	129	175	01.91-09.15	*
150 E 18, 150 E 18 P (8060.25V.4080)	Diesel	5861	129	175	01.91-09.15	*
150 E 18, 150 E 18 P (8060.45B)	Diesel	5861	129	175	01.91-09.15	*
120 E 18, 120 E 18 P, 120 E 18 H (8060.25V.4080)	Diesel	5861	130	177	01.91-09.15	*

LISTA DE APLICACIONES - BUYERS GUIDE

120 E 18, 120 E 18 P, 120 E 18 H (8060.45B.5100)	Diesel		5861	130	177	01.91-09.15	*
130 E 18 (8060.25V.4080)	Diesel		5861	130	177	01.91-09.15	*
135 E 18 W (8060.25V.4800)	Diesel		5861	130	177	01.91-09.15	*
135 E 18 WR (8060.25V.4800)	Diesel		5861	130	177	01.91-09.15	*
135 E 21 W (8060.45)	Diesel		5861	152	207	01.91-09.15	*
120 E 23,120 E 23 P, 120 E 23 FP, 120 E 23 H (8060.45.6090)	Diesel		5861	167	227	01.91-09.15	*
120 E 23,120 E 23 P, 120 E 23 FP, 120 E 23 H (8060.45S.6800)	Diesel		5861	167	227	01.91-09.15	*
120 E 23,120 E 23 P, 120 E 23 FP, 120 E 23 H (8060.45S.7200)	Diesel		5861	167	227	01.91-09.15	*
130 E 23 (8060.45.6090)	Diesel		5861	167	227	01.91-09.15	*
130 E 23 (8060.45S.6000)	Diesel		5861	167	227	01.91-09.15	*
135 E 23 W (8060.45S TCA)	Diesel		5861	167	227	01.91-09.15	*
135 E 23 WR (8060.45S TCA)	Diesel		5861	167	227	01.91-09.15	*
150 E 23, 150 E 23 P, 150 E 23 FP (8060.45.6090)	Diesel		5861	167	227	01.91-09.15	*
150 E 23, 150 E 23 P, 150 E 23 FP (8060.45S.6800)	Diesel		5861	167	227	01.91-09.15	*
150 E 27, 150 E 27 P, 150 E27FP, 150 E 27 R (8360.46.417 TCA)	Diesel		7685	196	267	01.91-09.15	*
EuroCargo I-III 01.91-09.15				Camión volquete			
120 E 15 K (8060.25R.4280)	Diesel		5861	105	143	01.91-09.15	*
130 E 15 K (8060.25R.4280)	Diesel		5861	105	143	01.91-09.15	*
150 E 15 K (8060.25R.4280)	Diesel		5861	105	143	01.91-09.15	*
120 E 18 K (8060.25V.4080)	Diesel		5861	130	177	01.91-09.15	*
130 E 18 K (8060.25V.4080)	Diesel		5861	130	177	01.91-09.15	*
150 E 18 K (8060.25V.4000)	Diesel		5861	130	177	01.91-09.15	*
150 E 18 K (8060.25V.4080)	Diesel		5861	130	177	01.91-09.15	*
EuroFire 01.91-				Veh. Municipal			
130 E 24 (8060.45M)	Diesel		5861	179	243	01.91-09.00	*