

# LISTA DE APLICACIONES - BUYERS GUIDE

## RB0454-073

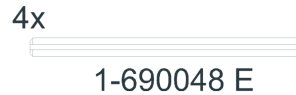
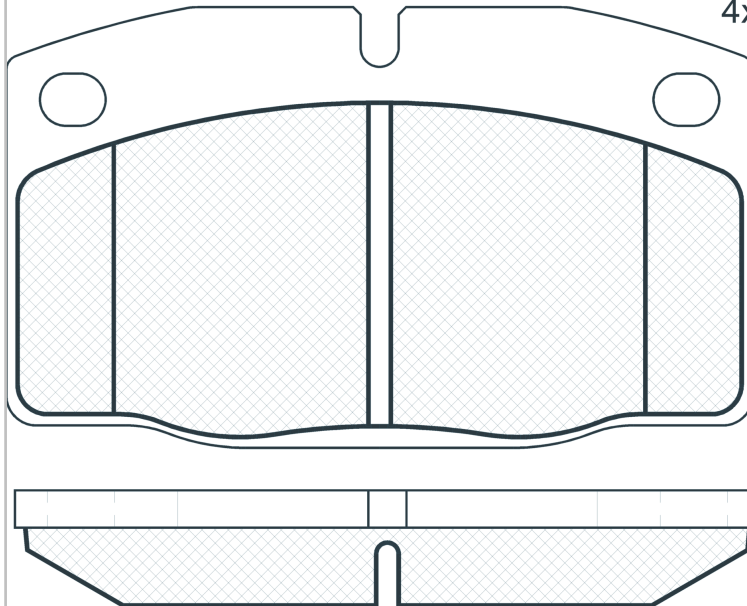


8 424073 119919

Qty: 300

Weight: 1.288

O.E.M.	MAKE
16 05 463	OPEL
16 05 482	OPEL
16 05 496	OPEL
16 05 504	OPEL
16 05 531	OPEL
16 05 536	OPEL
16 05 544	OPEL
16 05 546	OPEL
16 05 562	OPEL
16 05 563	OPEL
16 05 582	OPEL
16 05 586	VAUXHALL
16 05 668	OPEL
16 05 671	OPEL
16 05 703	OPEL
16 05 704	OPEL
16 05 783	OPEL
16 05 787	VAUXHALL
16 05 788	VAUXHALL
16 05 795	OPEL
16 05 820	OPEL
16 05 870	OPEL
90 297 357	VAUXHALL
90 398 758	VAUXHALL
90 398 759	VAUXHALL



4x

## RB0454-073



E1 90R-01030/115

Delco Moraine

100x59x15.4

WVA

20939

Sin Filas

FMSI

D1436-8554



Trac.

CC

Kw

CV



Front / Rear

### BEDFORD

#### ASTRA VAN II 09.84-08.91

[CAMBIADO]:Furgón/Break  
(Compact car-C Segment)

1.3	Gasolina	FWD	1295	43	59	09.84-	*
1.3 (13 N)	Gasolina	FWD	1297	34	46	09.84-09.89	*
1.3 (13 NB)	Gasolina	FWD	1297	44	60	09.84-09.89	*
1.3 (13 S)	Gasolina	FWD	1297	55	75	09.84-09.89	*
1.4 (14 NV)	Gasolina	FWD	1389	44	60	09.89-08.91	*
1.4	Gasolina	FWD	1395	43	59	09.84-	*
1.6	Gasolina	FWD	1595	45	61	09.84-	*
1.6 (16 SV)	Gasolina	FWD	1598	66	90	09.84-08.91	*
1.6 D	Diesel	RWD	1595	40	54	09.84-	*
1.6 D	Diesel	RWD	1595	42	57	09.84-	*
1.6 D (16 D)	Diesel	FWD	1598	40	54	09.85-08.88	*
1.6 D (16 DA)	Diesel	FWD	1598	42	57	09.87-08.89	*
1.7 D	Diesel	RWD	1695	42	57	09.84-	*
1.7 D (17 D)	Diesel	FWD	1699	42	57	09.88-08.91	*

#### ASTRAMAX 09.85-06.90

Furgoneta/MPV (Compact car-C Segment)

1.3	Gasolina	FWD	1295	43	59	09.85-	*
1.4 (14 NV)	Gasolina	FWD	1389	44	60	09.89-06.90	*
1.4	Gasolina	FWD	1395	43	59	09.85-	*
1.6 D	Diesel	RWD	1595	40	54	09.85-	*
1.6 D	Diesel	RWD	1595	42	57	09.85-	*
1.6 D (16 D)	Diesel	FWD	1598	40	54	09.85-08.88	*
1.6 D (16 DA)	Diesel	FWD	1598	42	57	09.85-08.88	*

# LISTA DE APLICACIONES - BUYERS GUIDE

1.7 D		Diesel	RWD	1695	42	57	09.85-	*
1.7 D (17 D)		Diesel	FWD	1699	42	57	09.88-06.90	*
LOTUS								
ELAN 09.89-11.95					Cabrio (Sports car-S Segment)			
1.6 i 16V (4XE1)		Gasolina	FWD	1588	97	132	09.89-11.95	*
1.6 i 16V Turbo (4XE1-T)		Gasolina	FWD	1588	115	156	09.91-11.95	*
1.6 i 16V Turbo (4XE1-T)		Gasolina	FWD	1588	123	167	09.89-11.95	*
OPEL								
ASCONA B (81_, 86_, 87_, 88_) 09.75-08.81					Sedán (Executive car-E Segment)			
1.2 (12 N)		Gasolina	RWD	1196	40	55	08.76-02.79	*
1.2 S (12 S)		Gasolina	RWD	1196	44	60	09.75-02.79	*
1.3 N (13 N)		Gasolina	RWD	1297	44	60	03.79-08.81	*
1.3 S (13 S)		Gasolina	RWD	1297	55	75	08.79-08.81	*
1.6 N (16 N)		Gasolina	RWD	1584	44	60	09.75-08.81	*
1.6 S (16 S)		Gasolina	RWD	1584	55	75	09.75-08.81	*
1.9 N (19 N)		Gasolina	RWD	1897	55	75	08.76-08.81	*
1.9 S (19 S)		Gasolina	RWD	1897	66	90	09.75-08.81	*
2.0 N (20 N)		Gasolina	RWD	1979	66	90	08.77-08.81	*
2.0 S (20 S)		Gasolina	RWD	1979	74	100	08.77-08.81	*
2.0 E (20 E)		Gasolina	RWD	1979	81	110	08.79-08.81	*
2.4 400 (24 E)		Gasolina	RWD	2410	106	144	07.80-08.81	*
2.0 D (20 D)		Diesel	RWD	1998	43	58	08.78-08.81	*
ASCONA C (J82) 09.81-08.88					[CAMBIADO]:Fastback (Executive car-E Segment)			
1.3 N (F68, M68) (13 N)		Gasolina	FWD	1297	44	60	09.81-08.86	*
1.3 S (F68, M68) (13 S)		Gasolina	FWD	1297	55	75	09.81-08.88	*
1.6 (F68, M68) (16 N)		Gasolina	FWD	1598	55	75	09.81-08.88	*
1.6 i (F68, M68) (E 16 NZ)		Gasolina	FWD	1598	55	75	09.87-08.88	*
1.6 i Cat (F68, M68) (C 16 LZ)		Gasolina	FWD	1598	55	75	09.86-08.88	*
1.6 i Cat (F68, M68) (C 16 NZ)		Gasolina	FWD	1598	55	75	09.86-08.88	*
1.6 (F68, M68) (16 SV)		Gasolina	FWD	1598	60	82	09.86-08.88	*
1.6 S (F68, M68) (16 SH)		Gasolina	FWD	1598	66	90	09.81-08.86	*
1.8 (F68, M68) (E 18 NV)		Gasolina	FWD	1796	62	84	09.87-08.88	*
1.8 E (F68, M68) (C 18 NE)		Gasolina	FWD	1796	74	100	01.85-08.86	*
1.8 E (F68, M68) (S 18 NV)		Gasolina	FWD	1796	74	100	01.85-08.86	*
1.8 i (F68, M68) (18 E)		Gasolina	FWD	1796	85	115	09.82-08.86	*
2.0 i (F68, M68) (20 NE)		Gasolina	FWD	1998	85	115	09.86-08.88	*
2.0 i Cat (F68, M68) (C 20 NE)		Gasolina	FWD	1998	85	116	09.86-08.88	*
2.0 i GT (F68, M68) (20 SEH)		Gasolina	FWD	1998	95	130	03.87-08.88	*
1.6 D (F68, M68) (16 D)		Diesel	FWD	1598	40	54	03.82-08.88	*
1.6 D (F68, M68) (16 DA)		Diesel	FWD	1598	40	54	03.82-08.88	*
ASCONA C (J82) 09.81-10.88					Sedán (Executive car-E Segment)			
1.3 N (F11, M11, F69) (13 N)		Gasolina	FWD	1297	44	60	09.81-08.86	*
1.3 S (F11, M11, F68, M68) (13 S)		Gasolina	FWD	1297	55	75	09.81-08.88	*
1.6 (F11, M11, F68, M68) (16 N)		Gasolina	FWD	1598	55	75	09.81-09.87	*
1.6 i (F11, M11, F68, M68) (E 16 LZ)		Gasolina	FWD	1598	55	75	09.87-08.88	*
1.6 i (F11, M11, F68, M68) (E 16 NZ)		Gasolina	FWD	1598	55	75	09.87-08.88	*
1.6 i Cat (F11, M11, F68, M68) (C 16 LZ)		Gasolina	FWD	1598	55	75	09.86-08.88	*
1.6 i Cat (F11, M11, F68, M68) (C 16 NZ)		Gasolina	FWD	1598	55	75	09.86-08.88	*
1.6 (F11, F68, M11, M68) (16 SV)		Gasolina	FWD	1598	60	82	09.86-08.88	*

# LISTA DE APLICACIONES - BUYERS GUIDE

1.6 S (F11, M11, F68, M68) (16 SH)		Gasolina	FWD	1598	66	90	09.81-08.86	*
1.8 (F11, M11, F68, M68) (E 18 NV)		Gasolina	FWD	1796	62	84	09.87-08.88	*
1.8 E (F11, M11, F68, M68) (C 18 NE)		Gasolina	FWD	1796	74	100	01.85-08.86	*
1.8 E (F11, M11, F68, M68) (S 18 NV)		Gasolina	FWD	1796	74	100	01.85-08.86	*
1.8 i (F11, M11, F68, M68) (18 E)		Gasolina	FWD	1796	85	115	09.82-08.86	*
2.0		Gasolina	FWD	1979	81	110	09.81-08.83	*
2.0 i (F11, M11, F68, M68) (C 20 NEF)		Gasolina	FWD	1998	74	100	08.87-08.88	*
2.0 i (F11, M11, F68, M68) (20 NE)		Gasolina	FWD	1998	85	115	09.86-08.88	*
2.0 i Cat (F11, M11, F68, M68) (C 20 NE)		Gasolina	FWD	1998	85	116	09.86-08.88	*
2.0 i GT (F11, M11, F68, M68) (20 SEH)		Gasolina	FWD	1998	95	130	03.87-08.88	*
1.6 D (F11, M11, F68, M68) (16 D)		Diesel	FWD	1598	40	54	03.82-08.88	*
1.6 D (F11, M11, F68, M68) (16 DA)		Diesel	FWD	1598	40	54	03.82-08.88	*
<b>CORSA A (S83) 09.82-03.93</b>					<b>[CAMBIADO]:Fastback (Supermini car-B Segment)</b>			
1.0 (F08, M08, F68, M68) (10 S)		Gasolina	FWD	993	33	45	09.82-03.93	*
1.2 i (F08, M08, F68, M68) (C 12 NZ)		Gasolina	FWD	1195	33	45	09.89-03.93	*
1.2 (F08, M08, F68, M68) (12 NC)		Gasolina	FWD	1196	33	45	09.82-08.90	*
1.2 (F08, M08, F68, M68) (E 12 GV)		Gasolina	FWD	1196	33	45	09.82-08.90	*
1.2 N (F08, M08, F68, M68) (12 NV)		Gasolina	FWD	1196	38	52	01.90-03.93	*
1.2 S (F08, M08, F68, M68) (12 ST)		Gasolina	FWD	1196	40	55	09.82-02.90	*
1.2 (F08, M08, F68, M68) (12 S)		Gasolina	FWD	1196	44	60	09.82-08.90	*
1.3 (F08, M08, F68, M68) (13 NB)		Gasolina	FWD	1297	44	60	09.85-10.89	*
1.3 i (F08, M08, F68, M68) (C 13 N)		Gasolina	FWD	1297	44	60	09.86-09.90	*
1.3 S (F08, M08, F68, M68) (13 SB)		Gasolina	FWD	1297	51	70	09.82-10.89	*
1.3 GL		Gasolina	FWD	1297	55	75	09.82-03.93	*
1.4 i (F08, M08, F68, M68) (C 14 NZ)		Gasolina	FWD	1389	40	54	01.85-03.93	*
1.6 GSI (F08, M08, M68, F68) (C 16 NZ)		Gasolina	FWD	1598	55	75	08.88-09.92	*
1.6 GSI (F08, M08, F68, M68) (C 16 NZ)		Gasolina	FWD	1598	60	82	09.88-08.90	*
1.6 GSI (F08, M08, F68, M68) (C 16 SEI)		Gasolina	FWD	1598	72	98	09.89-03.93	*
1.6 GSI (F08, M08, F68, M68) (E 16 SE)		Gasolina	FWD	1598	74	100	05.88-03.92	*
1.5 D (F08, M08, F68, M68) (15 D (4EC1))		Diesel	FWD	1488	37	50	09.87-03.93	*
1.5 TD (F08, M08, F68, M68) (15 DT (T4EC1))		Diesel	FWD	1488	49	67	03.88-03.93	*
<b>CORSA A (S83) 02.86-09.94</b>					<b>Furgón/hatchback (LCVs-N1 Segment)</b>			
1.0 (F08, W5L) (10 S)		Gasolina	FWD	993	33	45	02.86-04.89	*
1.2 (F08, W5L) (12 NC)		Gasolina	FWD	1196	33	45	02.86-04.89	*
1.2 (F08, W5L) (E 12 GV)		Gasolina	FWD	1196	33	45	02.86-04.89	*
1.2 (F08, W5L) (12 ST)		Gasolina	FWD	1196	40	54	02.86-04.89	*
1.2 (F08, W5L) (12 S)		Gasolina	FWD	1196	44	60	02.86-07.90	*
1.3 (F08, W5L) (13 NB)		Gasolina	FWD	1297	44	60	02.86-04.89	*
1.3 (F08, W5L) (13 SB)		Gasolina	FWD	1297	51	69	02.86-04.89	*
1.5 D (F08, W5L) (15 D (4EC1))		Diesel	FWD	1488	37	50	06.87-04.89	*
<b>CORSA A (S83) 09.82-03.93</b>					<b>Sedán (Supermini car-B Segment)</b>			
1.0 (F11, M11, F19, M19) (10 S)		Gasolina	FWD	993	33	45	09.82-09.92	*
1.2 i (F11, M11, F19, M19) (C 12 NZ)		Gasolina	FWD	1195	33	45	09.89-03.93	*
1.2 N (F11, M11, F19, M19) (12 NC)		Gasolina	FWD	1196	33	45	01.85-10.87	*
1.2 N (F11, M11, F19, M19) (E 12 GV)		Gasolina	FWD	1196	33	45	01.85-10.87	*
1.2 S (F11, M11, M19, F19) (12 ST)		Gasolina	FWD	1196	40	55	09.82-03.93	*
1.2 S (F11, M11, F19, M19) (12 S)		Gasolina	FWD	1196	43	58	09.82-10.87	*
1.3 (F11, F19, M11, M19) (13 NB)		Gasolina	FWD	1297	44	60	09.85-10.87	*
1.3 (F11, F19, M11, M19) (C 13 N)		Gasolina	FWD	1297	44	60	09.85-10.87	*
1.3 S (F11, M11, F19, M19) (13 SB)		Gasolina	FWD	1297	51	70	09.82-10.87	*

# LISTA DE APLICACIONES - BUYERS GUIDE

1.3 GL		Gasolina	FWD	1297	55	75	09.82-03.93	*
1.5 D (F11, M11, F19, M19) (15 D (4EC1))		Diesel	FWD	1488	37	50	10.87-11.92	*
1.5 TD (F11, M11, F19, M19) (15 DT (T4EC1))		Diesel	FWD	1488	49	67	10.87-03.93	*
<b>KADETT D (35_, 36_, 45_, 46_) 08.79-08.84</b>					<b>[CAMBIADO]:Break (Compact car-C Segment)</b>			
1.2 (12 N)		Gasolina	FWD	1196	39	53	08.79-07.82	*
1.2 S (12 S)		Gasolina	FWD	1196	44	60	08.79-08.84	*
1.3 N (13 N)		Gasolina	FWD	1297	44	60	08.79-08.84	*
1.3 S (13 S)		Gasolina	FWD	1297	55	75	08.79-08.84	*
1.6		Gasolina	FWD	1598	51	69	09.79-08.84	*
1.6		Gasolina	FWD	1598	55	75	09.79-08.84	*
1.6 S (16 SH)		Gasolina	FWD	1598	66	90	09.81-08.84	*
1.6 D (16 D)		Diesel	FWD	1598	40	54	03.82-08.84	*
<b>KADETT D (31_-34_, 41_-44_) 08.79-08.84</b>					<b>[CAMBIADO]:Fastback (Compact car-C Segment)</b>			
1.0 (10 N)		Gasolina	FWD	993	30	41	09.79-08.82	*
1.0 (10 S)		Gasolina	FWD	993	33	45	09.79-08.84	*
1.0 L, S, S City		Gasolina	FWD	995	37	50	08.79-	*
1.2 (12 N)		Gasolina	FWD	1196	39	53	08.79-07.82	*
1.2 (12 ST)		Gasolina	FWD	1196	40	55	08.82-08.84	*
1.2 S (12 S)		Gasolina	FWD	1196	44	60	08.79-08.84	*
1.3 N (13 N)		Gasolina	FWD	1297	44	60	08.79-08.84	*
1.3 S (13 S)		Gasolina	FWD	1297	55	75	08.79-08.84	*
1.6		Gasolina	FWD	1598	51	69	09.79-08.84	*
1.6		Gasolina	FWD	1598	55	75	09.79-08.84	*
1.6 S (16 SH)		Gasolina	FWD	1598	66	90	09.81-08.84	*
1.8 GT/E (18 E)		Gasolina	FWD	1796	85	115	02.83-08.84	*
1.6 D (16 D)		Diesel	FWD	1598	40	54	03.82-08.84	*
<b>KADETT D (32_,37_,39, _42) 08.79-08.84</b>					<b>Sedán (Compact car-C Segment)</b>			
1.0 (10 N)		Gasolina	FWD	993	30	41	09.79-08.82	*
1.0 (10 S)		Gasolina	FWD	993	33	45	09.79-08.84	*
1.2 S (12 S)		Gasolina	FWD	1196	44	60	08.79-08.84	*
1.3 N (C 13 N)		Gasolina	FWD	1297	44	60	08.79-08.84	*
1.3 S (13 S)		Gasolina	FWD	1297	55	75	08.79-08.84	*
1.6		Gasolina	FWD	1598	51	69	09.79-08.84	*
1.6		Gasolina	FWD	1598	55	75	09.79-08.84	*
1.6 D (16 D)		Diesel	FWD	1598	40	54	03.82-08.84	*
<b>KADETT E (T85) 09.84-08.91</b>					<b>[CAMBIADO]:Break (Compact car-C Segment)</b>			
1.2 (C15, C35, D15, D35) (12 SC)		Gasolina	FWD	1196	40	55	09.84-07.86	*
1.3 i Cat (C15, C35, D15, D35) (C 13 N)		Gasolina	FWD	1297	44	60	09.85-08.91	*
1.3 N (C15, C35, D15, D35) (13 N)		Gasolina	FWD	1297	44	60	09.84-08.91	*
1.3 (C15, C35, D15, D35) (13 S)		Gasolina	FWD	1297	50	68	01.85-12.87	*
1.3 S (C15, C35, D15, D35) (13 S)		Gasolina	FWD	1297	55	75	09.84-08.87	*
1.4 i (C15, C35, D15, D35) (C 14 NZ)		Gasolina	FWD	1389	44	60	01.90-08.91	*
1.4 S (C15, C35, D15, D35) (14 NV)		Gasolina	FWD	1389	55	75	01.90-08.91	*
1.6 i (C15, C35, D15, D35) (E 16 NZ)		Gasolina	FWD	1598	55	75	09.86-08.91	*
1.6 i Cat (C15, C35, D15, D35) (C 16 LZ)		Gasolina	FWD	1598	55	75	09.86-08.91	*
1.6 i Cat (C15, C35, D15, D35) (C 16 NZ)		Gasolina	FWD	1598	55	75	09.86-08.91	*
1.6 (C15, C35, D15, D35) (16 SV)		Gasolina	FWD	1598	60	82	09.86-08.91	*
1.6 S (C15, C35, D35, D15) (16 SH)		Gasolina	FWD	1598	66	90	09.84-08.86	*
1.8 S (C15, C35, D15, D35) (E 18 NV)		Gasolina	FWD	1796	62	84	09.87-08.91	*

# LISTA DE APLICACIONES - BUYERS GUIDE

1.8 S (C15, C35, D15, D35) (S 18 NV)		Gasolina	FWD	1796	62	84	09.87-08.91	*
1.8 i (C15, C35, D15, D35) (C 18 NT)		Gasolina	FWD	1796	66	90	06.85-08.91	*
1.8 i (C15, C35, D15, D35) (C 18 NZ)		Gasolina	FWD	1796	66	90	06.85-08.91	*
1.8 E (C15, C35, D15, D35) (C 18 NE)		Gasolina	FWD	1796	74	100	10.85-08.86	*
1.8 (46)		Gasolina	FWD	1796	82	111	12.88-08.91	*
1.8 i (C15, C35, D15, D35) (18 E)		Gasolina	FWD	1796	85	115	09.84-08.86	*
1.8 i (C15, C35, D15, D35) (18 SE)		Gasolina	FWD	1796	85	115	09.84-08.86	*
1.5 TD (C15, C35, D15, D35) (15 TD)		Diesel	FWD	1488	53	72	07.88-08.91	*
1.6 D (C15, C35, D15, D35) (16 D)		Diesel	FWD	1598	40	54	09.84-01.89	*
1.6 D (C15, C35, D15, D35) (16 DA)		Diesel	FWD	1598	40	54	09.84-01.89	*
1.7 D (C15, C35, D15, D35) (17 D)		Diesel	FWD	1699	42	57	02.89-08.91	*
<b>KADETT E (T85) 09.84-12.93</b>					<b>[CAMBIADO]:Fastback (Compact car-C Segment)</b>			
1.2 (C08, C48, D08, D48) (12 SC)		Gasolina	FWD	1196	40	55	09.84-07.86	*
1.3 i Cat (C08, C48, D08, D48) (C 13 N)		Gasolina	FWD	1297	44	60	09.85-08.91	*
1.3 N (C08, C48, D08, D48) (13 N)		Gasolina	FWD	1297	44	60	09.84-08.91	*
1.3 N (C08, C48, D08, D48) (13 NB)		Gasolina	FWD	1297	44	60	09.84-08.91	*
1.3 (C08, C48, D08, D48) (13 S)		Gasolina	FWD	1297	50	68	01.85-12.87	*
1.3 S (C08, C48, D08, D48) (13 S)		Gasolina	FWD	1297	55	75	09.84-08.87	*
1.4 i (C08, C48, D08, D48) (C 14 NZ)		Gasolina	FWD	1389	44	60	01.90-08.91	*
1.4 S (C08, C48, D08, D48) (14 NV)		Gasolina	FWD	1389	55	75	01.90-08.91	*
1.4 S (C08, C48, D08, D48) (C 14 SE)		Gasolina	FWD	1389	60	82	09.89-08.91	*
1.6 i (C08, C48, D08, D48) (E 16 NZ)		Gasolina	FWD	1598	55	75	09.86-08.91	*
1.6 i Cat (C08, C48, D08, D48) (C 16 LZ)		Gasolina	FWD	1598	55	75	09.86-08.91	*
1.6 i Cat (C08, C48, D08, D48) (C 16 NZ)		Gasolina	FWD	1598	55	75	09.86-08.91	*
1.6 S (C08, C48, D08, D48) (16 SV)		Gasolina	FWD	1598	60	82	09.86-08.91	*
1.6 S (C08, D08, C48, D48) (16 SH)		Gasolina	FWD	1598	66	90	09.84-08.86	*
1.8 S (C08, C48, D08, D48) (E 18 NV)		Gasolina	FWD	1796	62	84	09.87-08.91	*
1.8 S (C08, C48, D08, D48) (S 18 NV)		Gasolina	FWD	1796	62	84	09.87-08.91	*
1.8 i (C08, C48, D08, D48) (C 18 NT)		Gasolina	FWD	1796	66	90	06.85-08.91	*
1.8 i (C08, C48, D08, D48) (C 18 NZ)		Gasolina	FWD	1796	66	90	06.85-08.91	*
1.8 E (C08, C48, D08, D48) (C 18 NE)		Gasolina	FWD	1796	74	100	10.85-08.86	*
1.8 (43, 34, 44)		Gasolina	FWD	1796	82	111	08.85-08.88	*
1.8 GSI (C08, C48, D08, D48) (18 E)		Gasolina	FWD	1796	85	115	09.84-08.86	*
2.0 GSI (C08, C48, D08, D48) (20 NE)		Gasolina	FWD	1998	85	115	09.86-08.91	*
2.0 GSI Cat (C08, C48, D08, D48) (C 20 NE)		Gasolina	FWD	1998	85	115	09.86-08.91	*
2.0 GSI (C08, C48, D08, D48) (20 SEH)		Gasolina	FWD	1998	95	129	09.86-08.91	*
2.0 GSI 16V (C08, C48, D08, D48) (20 XEJ)		Gasolina	FWD	1998	110	150	03.88-08.91	*
2.0 GSI 16V Cat (C08, C48, D08, D48) (C 20 XE)		Gasolina	FWD	1998	110	150	03.88-08.91	*
2.0 GSI 16V (C08, C48, D08, D48) (20 XE)		Gasolina	FWD	1998	115	156	12.87-08.91	*
1.5 TD (C08, C48, D08, D48) (15 TD)		Diesel	FWD	1488	53	72	07.88-08.91	*
1.6 D (C08, C48, D08, D48) (16 D)		Diesel	FWD	1598	40	54	09.84-01.89	*
1.6 D (C08, C48, D08, D48) (16 DA)		Diesel	FWD	1598	40	54	09.84-01.89	*
1.7 D (C08, C48, D08, D48) (17 D)		Diesel	FWD	1699	42	57	02.89-08.91	*
<b>KADETT E (T85) 08.84-09.93</b>					<b>[CAMBIADO]:Furgón/Break (Compact car-C Segment)</b>			
1.2		Gasolina	FWD	1195	40	54	08.84-	*
1.2 (C70, D70) (12 SC)		Gasolina	FWD	1196	40	55	09.84-07.86	*
1.3		Gasolina	FWD	1295	40	54	08.84-	*
1.3 N (C70, D70) (13 N)		Gasolina	FWD	1297	44	60	09.84-07.89	*
1.3 N (C70, D70) (13 NB)		Gasolina	FWD	1297	44	60	09.84-07.89	*
1.4 i (C70, D70) (C 14 NZ)		Gasolina	FWD	1389	44	60	01.90-08.91	*

# LISTA DE APLICACIONES - BUYERS GUIDE

1.6		Gasolina	FWD	1595	57	78	08.84-	*
1.6 i (C70, D70) (C 16 NZ)		Gasolina	FWD	1598	55	75	08.89-09.93	*
1.8 i (C70, D70) (C 18 NT)		Gasolina	FWD	1796	66	90	08.84-09.92	*
1.6 D (C70, D70) (16 D)		Diesel	FWD	1598	40	54	08.84-08.88	*
1.6 D (C70, D70) (16 DA)		Diesel	FWD	1598	40	54	08.84-08.88	*
1.7 D (C70, D70) (17 D)		Diesel	FWD	1699	42	57	08.88-09.92	*
<b>KADETT E (T85) 01.86-07.94</b>					<b>[CAMBIADO]:Furgón/Break (LCVs-N1 Segment)</b>			
1.3 N (C25, D25) (13 N)		Gasolina	FWD	1297	44	60	01.86-12.89	*
1.3 S (C25, D25) (13 S)		Gasolina	FWD	1297	55	75	01.86-12.89	*
1.4 i (C25, D25) (C 14 NZ)		Gasolina	FWD	1389	44	60	08.91-07.94	*
1.4 S (C25, D25) (14 NV)		Gasolina	FWD	1389	55	75	07.89-08.91	*
1.6 i (C25, D25) (C 16 NZ)		Gasolina	FWD	1598	55	75	08.91-07.94	*
1.6 (C25, D25) (16 SV)		Gasolina	FWD	1598	60	82	09.86-12.91	*
1.6 D (C25, D25) (16 D)		Diesel	FWD	1598	40	54	01.86-12.89	*
1.6 D (C25, D25) (16 DA)		Diesel	FWD	1598	40	54	01.86-12.89	*
1.7 D (C25, D25) (17 D)		Diesel	FWD	1699	42	57	01.89-07.94	*
1.7 D (C25, D25) (17 DR)		Diesel	FWD	1699	44	60	07.92-07.94	*
<b>KADETT E (T85) 10.86-02.93</b>					<b>Cabrio (Compact car-C Segment)</b>			
1.3 S (13 S)		Gasolina	FWD	1297	55	75	03.87-02.93	*
1.4 i (C 14 NZ)		Gasolina	FWD	1389	44	60	01.90-08.91	*
1.4 S (14 NV)		Gasolina	FWD	1389	55	75	08.90-02.93	*
1.6 i (E 16 NZ)		Gasolina	FWD	1598	55	75	10.86-02.93	*
1.6 i Cat (C 16 LZ)		Gasolina	FWD	1598	55	75	10.87-02.93	*
1.6 i Cat (C 16 NZ)		Gasolina	FWD	1598	55	75	10.87-02.93	*
1.6 i (16 SV)		Gasolina	FWD	1598	60	82	07.89-02.93	*
2.0 i (20 NE)		Gasolina	FWD	1998	85	115	10.86-02.93	*
2.0 i (20 SER)		Gasolina	FWD	1998	85	115	10.86-02.93	*
2.0 i Cat (20 SER)		Gasolina	FWD	1998	85	116	10.86-02.93	*
2.0 i Cat (C 20 NE)		Gasolina	FWD	1998	85	116	10.86-02.93	*
2.0 (C 20 XE)		Gasolina	FWD	1998	110	150	09.90-05.92	*
2.0 GSi (20 XE)		Gasolina	FWD	1998	115	156	09.90-05.92	*
<b>KADETT E / MONZA E (T85) 09.84-12.93</b>					<b>Sedán (Compact car-C Segment)</b>			
1.2 (C19, D19) (12 SC)		Gasolina	FWD	1196	40	55	09.84-07.86	*
1.3 i Cat (C19, D19) (C 13 N)		Gasolina	FWD	1297	44	60	09.85-08.91	*
1.3 N (C19, D19) (13 N)		Gasolina	FWD	1297	44	60	09.84-08.89	*
1.3 N (C19, D19) (13 NB)		Gasolina	FWD	1297	44	60	09.84-08.89	*
1.3 S (C19, D19) (13 S)		Gasolina	FWD	1297	55	75	09.84-08.87	*
1.4 i (C19, D19) (C 14 NZ)		Gasolina	FWD	1389	44	60	01.90-08.91	*
1.4 S (C19, D19) (14 NV)		Gasolina	FWD	1389	55	75	01.90-08.91	*
1.6 i (C19, D19) (E 16 NZ)		Gasolina	FWD	1598	55	75	09.86-08.91	*
1.6 i Cat (C19, D19) (C 16 LZ)		Gasolina	FWD	1598	55	75	09.86-08.91	*
1.6 i Cat (C19, D19) (C 16 NZ)		Gasolina	FWD	1598	55	75	09.86-08.91	*
1.6 S (C19, D19) (16 SV)		Gasolina	FWD	1598	60	82	09.86-08.91	*
1.6 S (C19, D19) (16 SH)		Gasolina	FWD	1598	66	90	09.84-08.86	*
1.6		Gasolina	FWD	1598	75	102	09.87-08.91	*
1.8 S (C19, D19) (E 18 NV)		Gasolina	FWD	1796	62	84	09.87-08.91	*
1.8 S (C19, D19) (S 18 NV)		Gasolina	FWD	1796	62	84	09.87-08.91	*
1.8 i (C19, D19) (18 SV)		Gasolina	FWD	1796	66	90	08.89-05.92	*
1.8 i (C19, D19) (C 18 NT)		Gasolina	FWD	1796	66	90	08.89-05.92	*
1.8 i (C19, D19) (C 18 NZ)		Gasolina	FWD	1796	66	90	08.89-05.92	*

# LISTA DE APLICACIONES - BUYERS GUIDE

1.8 i (C19, D19) (C 18 NE)	Gasolina	FWD	1796	74	100	10.85-08.86	*
1.8 (C19, D19) (18 E)	Gasolina	FWD	1796	84	114	09.87-08.90	*
1.8 i (C19, D19) (18 E)	Gasolina	FWD	1796	85	115	09.84-08.86	*
1.8 i (C19, D19) (18 SE)	Gasolina	FWD	1796	85	115	09.84-08.86	*
2.0 i (C19, D19) (20 NE)	Gasolina	FWD	1998	85	115	09.87-05.92	*
2.0 i (C19, D19) (20 SE)	Gasolina	FWD	1998	85	115	09.87-05.92	*
2.0 i Cat (C19, D19) (C 20 NE)	Gasolina	FWD	1998	85	115	03.87-05.92	*
2.0 (C19, D19) (20 NE)	Gasolina	FWD	1998	95	129	01.86-12.93	*
1.5 TD (C19, D19) (15 TD)	Diesel	FWD	1488	53	72	07.88-08.91	*
1.6 D (C19, D19) (16 D)	Diesel	FWD	1598	40	54	09.84-01.89	*
1.6 D (C19, D19) (16 DA)	Diesel	FWD	1598	40	54	09.84-01.89	*
1.7 D (C19, D19) (17 D)	Diesel	FWD	1699	42	57	02.89-08.91	*
<b>KADETT C AERO 09.76-08.79</b>				<b>Cabrio (Compact car-C Segment)</b>			
1.2 (12 S)	Gasolina	RWD	1196	44	60	09.76-08.79	*
<b>MANTA B (53_, 55_) 09.75-08.88</b>				<b>Coupé (Sports car-S Segment)</b>			
1.2 N (12 N)	Gasolina	RWD	1196	40	55	08.76-07.83	*
1.2 S (12 S)	Gasolina	RWD	1196	44	60	09.75-02.79	*
1.3 N (13 N)	Gasolina	RWD	1297	44	60	03.79-12.80	*
1.3 S (13 S)	Gasolina	RWD	1297	55	75	08.79-08.86	*
1.6 N (16 N)	Gasolina	RWD	1584	44	60	09.75-12.80	*
1.6 (16 S)	Gasolina	RWD	1584	55	75	08.77-07.81	*
1.8 S (18 S)	Gasolina	RWD	1796	66	90	07.82-08.87	*
1.9 N (19 N)	Gasolina	RWD	1897	55	75	08.76-12.81	*
1.9 S (19 S)	Gasolina	RWD	1897	66	90	09.75-12.80	*
2.0 (20 N)	Gasolina	RWD	1979	66	90	08.77-12.80	*
2.0 S (20 S)	Gasolina	RWD	1979	74	100	08.77-08.84	*
2.0 E (20 E)	Gasolina	RWD	1979	81	110	08.77-08.88	*
2.0 (20 ER)	Gasolina	RWD	1979	92	125	08.81-07.88	*
2.4 400 (24 E)	Gasolina	RWD	2410	106	144	07.80-08.84	*
<b>MANTA B (58_, 59_) 09.75-08.88</b>				<b>Sedán (Sports car-S Segment)</b>			
1.3 N (13 N)	Gasolina	RWD	1297	44	60	03.79-12.80	*
1.3 S (13 S)	Gasolina	RWD	1297	55	75	08.81-08.86	*
1.6 N (16 N)	Gasolina	RWD	1584	44	60	09.75-12.80	*
1.6 S (16 S)	Gasolina	RWD	1584	55	75	09.75-12.81	*
1.8 S (18 S)	Gasolina	RWD	1796	66	90	07.82-08.87	*
1.9 N (19 N)	Gasolina	RWD	1897	55	75	08.76-12.81	*
2.0 (20 N)	Gasolina	RWD	1979	66	90	08.77-12.80	*
2.0 S (20 S)	Gasolina	RWD	1979	74	100	08.77-08.84	*
2.0 E (20 E)	Gasolina	RWD	1979	81	110	08.77-08.88	*
<b>OMEGA A (V87) 09.86-05.94</b>				<b>[CAMBIADO]:Break (Executive car-E Segment)</b>			
1.8 N (F35, M35) (18 NV)	Gasolina	RWD	1796	60	82	09.86-08.87	*
1.8 N (F35, M35) (18 SV)	Gasolina	RWD	1796	63	86	11.86-09.88	*
1.8 (F35, M35) (E 18 NVR)	Gasolina	RWD	1796	65	88	09.87-03.94	*
1.8 S (F35, M35) (18 SV)	Gasolina	RWD	1796	66	90	09.86-03.94	*
1.8 (F35, M35) (18 SEH)	Gasolina	RWD	1796	85	115	09.86-03.94	*
2.0 (F35, M35) (C 20 NE)	Gasolina	RWD	1998	85	116	09.87-04.94	*
2.0 i (F35, M35) (C 20 NE)	Gasolina	RWD	1998	85	115	09.86-04.94	*
2.0 (F35, M35) (20 SE)	Gasolina	RWD	1998	90	122	09.86-03.94	*
2.4 i (F35, M35) (C 24 NE)	Gasolina	RWD	2410	92	125	09.88-03.94	*
2.3 D (F35, M35) (23 YD)	Diesel	RWD	2260	54	73	09.86-03.94	*

# LISTA DE APLICACIONES - BUYERS GUIDE

2.3 TD (F35, M35) (23 YDT)		Diesel	RWD	2260	66	90	09.86-08.88	*
2.3 TD Interc. (F35, M35) (23 DTR)		Diesel	RWD	2260	74	100	09.88-03.94	*
<b>OMEGA A (V87) 09.86-05.94</b>					<b>Sedán (Executive car-E Segment)</b>			
1.8 N (F19, M19, N19) (18 NV)		Gasolina	RWD	1796	60	82	09.86-08.87	*
1.8 N (F19, M19, N19) (18 SV)		Gasolina	RWD	1796	63	86	11.86-09.88	*
1.8 (F19, M19, N19) (E 18 NVR)		Gasolina	RWD	1796	65	88	09.87-03.94	*
1.8 S (F19, M19, N19) (18 NV)		Gasolina	RWD	1796	66	90	09.86-03.94	*
1.8 S (F19, M19, N19) (18 SV)		Gasolina	RWD	1796	66	90	09.86-03.94	*
1.8 (F19, M19, N19) (18 SEH)		Gasolina	RWD	1796	85	115	09.86-03.94	*
2.0 (F19, M19, N19)		Gasolina	RWD	1998	85	116	09.87-04.94	*
2.0 i (F19, M19, N19) (C 20 NE)		Gasolina	RWD	1998	85	115	09.86-03.94	*
2.0 (F19, M19, N19) (20 SE)		Gasolina	RWD	1998	90	122	09.86-03.94	*
2.4 i (F19, M19, N19) (C 24 NE)		Gasolina	RWD	2410	92	125	09.88-03.94	*
2.3 D (F19, M19, N19) (23 YD)		Diesel	RWD	2260	54	73	10.86-03.94	*
2.3 TD (F19, M19, N19) (23 YDT)		Diesel	RWD	2260	66	90	10.86-08.88	*
2.3 TD Interc. (F19, M19, N19) (23 DTR)		Diesel	RWD	2260	74	100	08.88-03.94	*
<b>REKORD E (61_, 66_, 67_) 08.77-08.86</b>					<b>[CAMBIADO]:Break (Large family car-D Segment)</b>			
1.8 (18 N)		Gasolina	RWD	1796	55	75	11.82-08.86	*
1.8 S (18 S)		Gasolina	RWD	1796	66	90	11.82-08.86	*
1.8 E (C 18 NV)		Gasolina	RWD	1796	74	100	05.85-08.86	*
2.0 (20 N)		Gasolina	RWD	1979	66	90	09.77-10.82	*
2.0 S (20 S)		Gasolina	RWD	1979	74	100	08.77-08.86	*
2.0 E (20 E)		Gasolina	RWD	1979	81	110	09.77-10.84	*
2.2 E (22 E)		Gasolina	RWD	2197	85	115	11.84-08.86	*
2.2 D (23 D)		Diesel	RWD	2260	48	65	08.78-08.83	*
2.3 D (23 D)		Diesel	RWD	2260	52	71	11.82-08.86	*
2.2 TD (23 TD)		Diesel	RWD	2260	63	86	06.84-08.86	*
<b>REKORD E (17_, 11_, 14_, 16_, 18_, 19_) 08.77-08.86</b>					<b>Sedán (Large family car-D Segment)</b>			
1.8 (18 N)		Gasolina	RWD	1796	55	75	11.82-08.86	*
1.8 S (18 S)		Gasolina	RWD	1796	66	90	11.82-08.86	*
1.8 E (C 18 NV)		Gasolina	RWD	1796	74	100	05.85-08.86	*
2.0 (20 N)		Gasolina	RWD	1979	66	90	09.77-10.82	*
2.0 S (20 S)		Gasolina	RWD	1979	74	100	08.77-08.86	*
2.0 E (20 E)		Gasolina	RWD	1979	81	110	09.77-10.84	*
2.2 E (22 E)		Gasolina	RWD	2197	85	115	11.84-08.86	*
2.2 D (23 D)		Diesel	RWD	2260	48	65	08.78-08.83	*
2.2 D (23 D)		Diesel	RWD	2260	52	71	11.82-08.86	*
2.2 TD (23 TD)		Diesel	RWD	2260	63	86	06.84-08.86	*
<b>VECTRA A (J89) 04.88-12.95</b>					<b>[CAMBIADO]:Fastback (Large family car-D Segment)</b>			
1.4 S (F68, M68) (14 NV)		Gasolina	FWD	1389	55	75	04.88-06.92	*
1.6 i (F68, M68) (16 LZ2)		Gasolina	FWD	1598	55	75	09.93-11.95	*
1.6 i Cat (F68, M68) (C 16 NZ)		Gasolina	FWD	1598	55	75	09.88-11.95	*
1.6 i Cat (F68, M68) (C 16 NZ2)		Gasolina	FWD	1598	55	75	09.88-11.95	*
1.6 S (16 SV)		Gasolina	FWD	1598	60	82	09.88-05.93	*
1.6 (F68, M68) (E 16 NZ)		Gasolina	FWD	1598	65	88	08.88-06.94	*
1.8 S (F68, M68) (E 18 NVR)		Gasolina	FWD	1796	65	88	09.88-07.89	*
1.8 i (F68, M68) (18 SV)		Gasolina	FWD	1796	66	90	09.88-10.90	*
1.8 i Cat (F68, M68) (C 18 NZ)		Gasolina	FWD	1796	66	90	03.90-11.95	*
1.7 TD (F68, M68) (17 TD)		Diesel	FWD	1686	60	82	03.90-11.95	*



# LISTA DE APLICACIONES - BUYERS GUIDE

1.7 D (F68, M68) (17 D)		Diesel	FWD	1699	42	57	09.88-09.92	*
1.7 D (F68, M68) (17 DR)		Diesel	FWD	1699	44	60	07.92-11.95	*
<b>VECTRA A (J89) 08.88-12.95</b>					<b>Sedán (Large family car-D Segment)</b>			
1.4 S (F19, M19) (14 NV)		Gasolina	FWD	1389	55	75	09.88-06.92	*
1.6 i (F19, M19) (C 16 NZ)		Gasolina	FWD	1598	55	75	09.88-11.95	*
1.6 i (F19, M19) (C 16 NZ2)		Gasolina	FWD	1598	55	75	09.88-11.95	*
1.6 i (F19, M19) (E 16 NZ)		Gasolina	FWD	1598	55	75	09.88-11.95	*
1.6 i (F19, M19) (16 LZ2)		Gasolina	FWD	1598	55	75	09.93-11.95	*
1.6 i (F19, M19) (C 16 LZ2)		Gasolina	FWD	1598	55	75	09.93-11.95	*
1.6 (F19, M19) (16 SV)		Gasolina	FWD	1598	60	82	09.88-05.93	*
1.8 S (F19, M19) (E 18 NVR)		Gasolina	FWD	1796	65	88	09.88-07.89	*
1.8 i Cat (F19, M19) (C 18 NZ)		Gasolina	FWD	1796	66	90	03.90-11.95	*
1.8 S (F19, M19) (18 SV)		Gasolina	FWD	1796	66	90	09.89-10.90	*
1.7 TD (F19, M19) (17 TD)		Diesel	FWD	1686	60	82	03.90-11.95	*
1.7 D (F19, M19) (17 D)		Diesel	FWD	1699	42	57	10.88-09.92	*
1.7 D (F19, M19) (17 DR)		Diesel	FWD	1699	44	60	07.92-11.95	*
<b>VAUXHALL</b>								
<b>ASTRA Mk I 09.79-08.86</b>					<b>[CAMBIADO]:Break (Compact car-C Segment)</b>			
1.3 S (13 S)		Gasolina	FWD	1297	55	75	09.79-08.84	*
<b>ASTRA Mk I 09.79-08.86</b>					<b>[CAMBIADO]:Fastback (Compact car-C Segment)</b>			
1.2 S (12 S)		Gasolina	FWD	1196	44	60	02.82-08.84	*
1.3 S (13 S)		Gasolina	FWD	1297	55	75	09.79-08.84	*
1.6 S (16 S)		Gasolina	FWD	1598	66	90	09.81-08.86	*
1.8 GTE (18 E)		Gasolina	FWD	1796	85	115	03.83-08.86	*
1.6 D (16 D)		Diesel	FWD	1598	40	54	03.82-08.86	*
<b>ASTRA Mk II (T85) 09.84-08.91</b>					<b>[CAMBIADO]:Break (Compact car-C Segment)</b>			
1.2 (12 S)		Gasolina	FWD	1196	44	60	09.84-12.88	*
1.3 (13 S)		Gasolina	FWD	1297	55	75	09.84-08.91	*
1.4 S (14 NV)		Gasolina	FWD	1389	55	75	01.89-08.91	*
1.6 (16 SV)		Gasolina	FWD	1598	60	82	09.84-08.91	*
1.6 S (16 S)		Gasolina	FWD	1598	66	90	09.84-08.86	*
1.8 i (18 E)		Gasolina	FWD	1796	83	112	01.90-08.91	*
1.5 DT		Diesel	FWD	1499	49	67	01.88-08.91	*
1.6 D (16 DA)		Diesel	FWD	1598	40	54	09.84-12.89	*
1.7 D (17 D)		Diesel	FWD	1699	42	57	02.89-08.91	*
<b>ASTRA Mk II (T85) 01.87-09.93</b>					<b>Cabrio (Compact car-C Segment)</b>			
1.4 S (43) (14 NV)		Gasolina	FWD	1389	55	75	09.91-09.93	*
1.6 i		Gasolina	FWD	1598	55	75	01.91-08.93	*
1.6 i Cat		Gasolina	FWD	1598	55	75	10.87-02.93	*
1.6 i (16 SV)		Gasolina	FWD	1598	60	82	01.87-12.91	*
2.0 i (20 NE)		Gasolina	FWD	1998	85	115	01.87-12.91	*
2.0 i (C 20 NE)		Gasolina	FWD	1998	85	115	01.87-12.91	*
2.0 i Cat (C 20 NE)		Gasolina	FWD	1998	85	115	01.91-08.93	*
<b>ASTRA Mk II BELMONT (T85) 09.85-12.91</b>					<b>Sedán (Compact car-C Segment)</b>			
1.3 (13 S)		Gasolina	FWD	1297	55	75	09.85-08.91	*
1.4 i (C 14 NZ)		Gasolina	FWD	1389	44	60	01.90-12.91	*
1.4 S (14 NV)		Gasolina	FWD	1389	55	75	10.89-12.91	*
1.6 S (16 SV)		Gasolina	FWD	1598	60	82	01.89-12.91	*

# LISTA DE APLICACIONES - BUYERS GUIDE

1.6		Gasolina	FWD	1598	66	90	09.85-08.91	*
1.8 (18 SE)		Gasolina	FWD	1796	82	111	01.86-12.90	*
1.8 i (18 E)		Gasolina	FWD	1796	85	115	09.85-08.91	*
1.8 i (18 SE)		Gasolina	FWD	1796	85	115	09.85-08.91	*
1.5 DT		Diesel	FWD	1499	49	67	01.88-08.90	*
1.5 DT		Diesel	FWD	1499	53	72	01.87-08.89	*
1.6 D (16 D)		Diesel	FWD	1598	40	54	09.85-08.91	*
1.6 D (16 DA)		Diesel	FWD	1598	40	54	09.85-08.91	*
1.7 D (17 D)		Diesel	FWD	1699	42	57	01.89-12.91	*
<b>ASTRA Mk II CC (T85) 09.84-08.91</b>					<b>[CAMBIADO]:Fastback (Compact car-C Segment)</b>			
1.2 (12 S)		Gasolina	FWD	1196	40	54	09.84-08.91	*
1.2 (12 S)		Gasolina	FWD	1196	44	60	09.84-08.91	*
1.3		Gasolina	FWD	1297	44	60	09.84-08.91	*
1.3 (13 S)		Gasolina	FWD	1297	55	75	09.84-08.91	*
1.4 i (C 14 NZ)		Gasolina	FWD	1389	44	60	01.90-08.91	*
1.4 S (14 NV)		Gasolina	FWD	1389	55	75	01.90-08.91	*
1.6 (16 SV)		Gasolina	FWD	1598	60	82	09.84-08.91	*
1.6 S (16 SH)		Gasolina	FWD	1598	66	90	09.84-08.86	*
1.8 GTE (18 E)		Gasolina	FWD	1796	82	112	09.84-08.91	*
1.8 GTE (18 SE)		Gasolina	FWD	1796	82	112	09.84-08.91	*
2.0 (20 NE)		Gasolina	FWD	1998	85	115	09.86-08.91	*
2.0 GTE (20 SEH)		Gasolina	FWD	1998	95	129	09.86-08.91	*
1.9 (C 20 XE)		Gasolina	FWD	1998	110	149	03.88-08.91	*
2.0 GTE 16V (20 XE)		Gasolina	FWD	1998	115	156	05.88-08.91	*
1.6 D (16 D)		Diesel	FWD	1598	40	54	09.84-12.89	*
1.6 D (16 DA)		Diesel	FWD	1598	40	54	09.84-12.89	*
1.7 D (17 DR)		Diesel	FWD	1699	42	57	09.88-08.91	*
<b>ASTRAMAX (T85) 08.85-10.94</b>					<b>Furgoneta/MPV (LCVs-N1 Segment)</b>			
1.3		Gasolina	FWD	1295	60	81	08.85-	*
1.3 N (13 NB)		Gasolina	FWD	1297	44	60	08.85-12.89	*
1.3 S (13 S)		Gasolina	FWD	1297	55	75	08.85-12.89	*
1.4 i (C 14 NZ)		Gasolina	FWD	1389	44	60	08.91-07.94	*
1.4 S (14 NV)		Gasolina	FWD	1389	55	75	07.89-08.91	*
1.4		Gasolina	FWD	1395	54	74	08.85-	*
1.6 i (C 16 NZ)		Gasolina	FWD	1598	55	75	08.91-10.94	*
1.6 (16 SV)		Gasolina	FWD	1598	60	82	09.85-12.91	*
1.6 (C 16 NZ)		Gasolina	FWD	1598	61	83	12.86-12.92	*
1.6 (E 16 NZ)		Gasolina	FWD	1598	61	83	12.86-12.92	*
1.6 D		Diesel	RWD	1595	40	54	08.85-	*
1.6 D (16 DA)		Diesel	FWD	1598	40	54	05.86-06.90	*
1.7 D		Diesel	RWD	1695	42	57	08.85-	*
1.7 D		Diesel	RWD	1695	43	59	08.85-	*
1.7 D (17 D)		Diesel	FWD	1699	42	57	01.89-07.94	*
<b>CARLTON Mk II 09.77-08.86</b>					<b>[CAMBIADO]:Break (Executive car-E Segment)</b>			
1.8 S (18 S)		Gasolina	RWD	1796	66	90	11.82-08.86	*
2.0 S		Gasolina	RWD	1998	74	100	01.82-08.86	*
2.2 i (22 E)		Gasolina	RWD	2197	85	115	11.84-08.86	*
2.3 D (23 D)		Diesel	RWD	2260	52	71	05.83-08.86	*

# LISTA DE APLICACIONES - BUYERS GUIDE

CARLTON Mk II 10.78-08.86					Sedán (Executive car-E Segment)			
1.8 S (18 S)		Gasolina	RWD	1796	65	88	12.82-08.86	*
2.0 i (20 E)		Gasolina	RWD	1979	81	110	01.83-12.84	*
2.0 i (20 S)		Gasolina	RWD	1979	81	110	01.83-12.84	*
2.0 S (C 20 NEJ)		Gasolina	RWD	1998	74	100	10.78-08.86	*
2.2 i (22 E)		Gasolina	RWD	2197	85	115	11.84-08.86	*
2.3 D (23 D)		Diesel	RWD	2260	52	71	05.83-08.86	*
CARLTON Mk III (V87) 09.86-03.94					[CAMBIADO]:Break (Executive car-E Segment)			
1.8 N		Gasolina	RWD	1796	60	82	09.86-08.87	*
1.8 (E 18 NVR)		Gasolina	RWD	1796	65	88	09.87-03.94	*
1.8 S (18 SV)		Gasolina	RWD	1796	66	90	09.86-03.94	*
1.8 i (18 SEH)		Gasolina	RWD	1796	85	115	09.86-03.94	*
2.0 (C 20 NE)		Gasolina	RWD	1998	85	115	09.86-03.94	*
2.0 i (20 SE)		Gasolina	RWD	1998	90	122	09.86-03.94	*
2.3 D (23 YD)		Diesel	RWD	2260	54	73	09.86-03.94	*
2.2 TD (23 YDT)		Diesel	RWD	2260	66	90	09.86-08.88	*
2.3 TD Interc. (23 DTR)		Diesel	RWD	2260	74	100	09.88-03.94	*
CARLTON Mk III (V87) 09.86-03.94					Sedán (Executive car-E Segment)			
1.8 N		Gasolina	RWD	1796	60	82	09.86-08.87	*
1.8 (E 18 NVR)		Gasolina	RWD	1796	65	88	09.87-03.94	*
1.8 S (18 SV)		Gasolina	RWD	1796	66	90	09.86-03.94	*
1.8 i (18 SEH)		Gasolina	RWD	1796	85	115	09.86-03.94	*
2.0 (C 20 NE)		Gasolina	RWD	1998	85	115	09.86-03.94	*
2.0 i (20 SE)		Gasolina	RWD	1998	90	122	09.86-03.94	*
2.3 D (23 YD)		Diesel	RWD	2260	54	73	09.86-03.94	*
2.2 TD (23 YDT)		Diesel	RWD	2260	66	90	10.86-08.88	*
2.3 TD Interc. (23 DTR)		Diesel	RWD	2260	74	100	08.88-03.94	*
CAVALIER Mk I 08.75-08.81					Coupé (Large family car-D Segment)			
1.3		Gasolina	FWD	1256	42	57	08.75-08.81	*
2.0 S (20 S)		Gasolina	RWD	1979	74	100	03.78-08.81	*
CAVALIER Mk I 08.75-08.81					Sedán (Large family car-D Segment)			
1.3 (LW4)		Gasolina	RWD	1256	43	58	08.77-01.81	*
2.0 (20 S)		Gasolina	RWD	1979	74	100	01.79-01.81	*
CAVALIER Mk I 03.75-08.81					Targa (Large family car-D Segment)			
1300 (13 N)		Gasolina	RWD	1297	44	60	08.77-08.81	*
1.6 N (16 N (CIH))		Gasolina	RWD	1584	44	60	08.75-08.81	*
1.6 S (16 S CIH)		Gasolina	RWD	1584	55	75	08.75-08.81	*
2.0 S (20 S)		Gasolina	RWD	1979	74	100	01.78-08.81	*
CAVALIER Mk I CC 03.75-08.81					[CAMBIADO]:Fastback (Large family car-D Segment)			
1.3 (LW4)		Gasolina	RWD	1256	42	57	08.75-08.81	*
1600 (16 S CIH)		Gasolina	RWD	1584	55	75	09.75-08.81	*
2000 (20 S)		Gasolina	RWD	1979	74	100	08.77-08.81	*
CAVALIER Mk II (J82) 09.81-08.88					[CAMBIADO]:Break (Large family car-D Segment)			
1.3 S (13 S)		Gasolina	FWD	1297	55	75	09.81-08.88	*
1.6 (16 SH)		Gasolina	FWD	1598	66	90	10.83-08.88	*
1.8 i (18 E)		Gasolina	FWD	1796	82	112	09.81-08.86	*
1.8 i (18 SE)		Gasolina	FWD	1796	82	112	09.81-08.86	*
1.6 D (16 DA)		Diesel	FWD	1598	40	54	03.82-08.88	*

# LISTA DE APLICACIONES - BUYERS GUIDE

CAVALIER Mk II (J82) 08.84-10.88					Cabrio (Large family car-D Segment)			
1800i (18 SE)	Gasolina	FWD	1796	82	112	03.85-10.88	*	
CAVALIER Mk II (J82) 09.81-08.88					Sedán (Large family car-D Segment)			
1.3 N	Gasolina	FWD	1297	44	60	09.81-08.88	*	
1.3 S (13 S)	Gasolina	FWD	1297	55	75	09.81-08.88	*	
1.6 i (E 16 NZ)	Gasolina	FWD	1598	55	75	08.86-08.88	*	
1.6 i Cat (C 16 LZ)	Gasolina	FWD	1598	55	75	08.86-08.88	*	
1.6 i Cat (C 16 NZ)	Gasolina	FWD	1598	55	75	08.86-08.88	*	
1.6 N (16 N)	Gasolina	FWD	1598	55	75	09.81-08.88	*	
1.6 S (16 SH)	Gasolina	FWD	1598	66	90	09.81-08.88	*	
1.8	Gasolina	FWD	1796	62	84	08.86-08.88	*	
1.8 i Cat (C 18 NE)	Gasolina	FWD	1796	74	100	01.85-08.86	*	
1.8 i (18 SE)	Gasolina	FWD	1796	82	112	09.81-08.88	*	
1.8 i (18 E)	Gasolina	FWD	1796	85	115	09.81-08.88	*	
2.0	Gasolina	FWD	1979	74	101	09.86-08.87	*	
2.0	Gasolina	FWD	1979	81	110	08.86-08.87	*	
2.0 i (20 NE)	Gasolina	FWD	1998	85	115	09.86-08.88	*	
2.0 i Cat (C 20 NE)	Gasolina	FWD	1998	85	115	09.86-08.88	*	
2000i (20 SE)	Gasolina	FWD	1998	90	122	09.86-08.88	*	
2.0 4x4 (20 SEH)	Gasolina	4WD	1998	95	129	09.87-08.88	*	
2.0 SRi 130 (20 SEH)	Gasolina	FWD	1998	95	130	03.87-08.88	*	
1.6 D (16 D)	Diesel	FWD	1598	40	54	03.82-08.88	*	
CAVALIER Mk II CC (J82) 09.81-08.88					[CAMBIADO]:Fastback (Large family car-D Segment)			
1.3 S (13 S)	Gasolina	FWD	1297	55	75	09.81-08.88	*	
1.6 S (16 SH)	Gasolina	FWD	1598	66	90	09.81-08.88	*	
1.8 i (18 SE)	Gasolina	FWD	1796	82	112	09.81-08.88	*	
1.8 i (18 E)	Gasolina	FWD	1796	85	115	09.81-08.88	*	
2.0	Gasolina	FWD	1979	74	101	09.86-08.87	*	
2.0	Gasolina	FWD	1979	81	110	09.86-08.87	*	
2.0 i Cat (C 20 NE)	Gasolina	FWD	1998	85	115	09.86-08.88	*	
2000i (20 SE)	Gasolina	FWD	1998	90	122	09.86-08.88	*	
2.0	Gasolina	FWD	1998	95	129	09.87-08.88	*	
2.0 SRi 130 (20 SEH)	Gasolina	FWD	1998	95	130	03.87-08.88	*	
1600D (16 D)	Diesel	FWD	1598	40	54	03.82-08.88	*	
1600D (16 DA)	Diesel	FWD	1598	40	54	03.82-08.88	*	
CAVALIER Mk III (J89) 08.88-11.95					Sedán (Large family car-D Segment)			
1.4 S (14 NV)	Gasolina	FWD	1389	55	75	09.88-11.95	*	
1.6 i (X 16 SZ)	Gasolina	FWD	1598	52	71	09.93-11.95	*	
1.6 i (C 16 NZ)	Gasolina	FWD	1598	55	75	09.88-11.95	*	
1.6 i (E 16 NZ)	Gasolina	FWD	1598	55	75	09.88-11.95	*	
1.6 (16 SV)	Gasolina	FWD	1598	60	82	09.88-05.93	*	
1.8 (E 18 NVR)	Gasolina	FWD	1796	65	88	09.89-08.92	*	
1.8 (18 SV)	Gasolina	FWD	1796	66	90	09.88-08.95	*	
1.8 (C 18 NZ)	Gasolina	FWD	1796	66	90	09.88-08.95	*	
1.8 i Cat (18 SV)	Gasolina	FWD	1796	66	90	03.90-11.95	*	
1.8 i Cat (C 18 NZ)	Gasolina	FWD	1796	66	90	03.90-11.95	*	
1.7 TD (17 TD)	Diesel	FWD	1686	60	82	09.88-11.95	*	
1.7 D (17 D)	Diesel	FWD	1699	42	57	09.88-09.92	*	

# LISTA DE APLICACIONES - BUYERS GUIDE

CAVALIER Mk III CC (J89) 09.88-11.95					[CAMBIADO]:Fastback (Large family car-D Segment)			
1.4 S (14 NV)		Gasolina	FWD	1389	55	75	09.88-11.95	*
1.6 i (X 16 SZ)		Gasolina	FWD	1598	52	71	09.93-11.95	*
1.6 i (C 16 NZ)		Gasolina	FWD	1598	55	75	09.88-11.95	*
1.6 i (E 16 NZ)		Gasolina	FWD	1598	55	75	09.88-11.95	*
1.6 (16 SV)		Gasolina	FWD	1598	60	82	09.88-05.93	*
1.8 (18 SV)		Gasolina	FWD	1796	66	90	09.88-10.90	*
1.8 (C 18 NZ)		Gasolina	FWD	1796	66	90	09.88-10.90	*
1.8 i Cat (18 SV)		Gasolina	FWD	1796	66	90	03.90-11.95	*
1.8 i Cat (C 18 NZ)		Gasolina	FWD	1796	66	90	03.90-11.95	*
1.7 TD (17 TD)		Diesel	FWD	1686	60	82	09.88-11.95	*
1.7 D (17 D)		Diesel	FWD	1699	42	57	09.88-09.92	*
NOVA (S83) 09.82-12.93					Sedán (Supermini car-B Segment)			
1.0 (10 S)		Gasolina	FWD	993	33	45	09.82-10.87	*
1.2 N		Gasolina	FWD	1196	33	45	02.92-12.93	*
1.2 S (12 ST)		Gasolina	FWD	1196	40	55	09.82-10.87	*
1.3 i		Gasolina	FWD	1297	44	60	09.85-10.87	*
1.3 S (13 SB)		Gasolina	FWD	1297	51	70	09.82-10.87	*
1.4 S (14 NV)		Gasolina	FWD	1389	55	75	01.90-02.93	*
1.5 D		Diesel	FWD	1488	37	50	09.87-02.93	*
1.5 TD (15 DT (T4EC1))		Diesel	FWD	1488	49	67	01.90-02.93	*
NOVA CC (S83) 05.83-03.93					[CAMBIADO]:Fastback (Supermini car-B Segment)			
1.0 (10 S)		Gasolina	FWD	993	33	45	05.83-03.93	*
1.2 (C 12 NZ)		Gasolina	FWD	1196	33	45	09.89-03.93	*
1.2 i		Gasolina	FWD	1196	33	45	01.85-03.93	*
1.2 N (12 NV)		Gasolina	FWD	1196	38	52	01.90-03.93	*
1.2 S (12 ST)		Gasolina	FWD	1196	40	55	05.83-02.90	*
1.2 S		Gasolina	FWD	1196	43	58	01.88-02.90	*
1.3 i		Gasolina	FWD	1297	44	60	09.85-10.89	*
1.3 i Cat		Gasolina	FWD	1297	44	60	09.89-03.93	*
1.3 S (13 SB)		Gasolina	FWD	1297	51	70	05.83-10.89	*
1.4 i (C 14 NZ)		Gasolina	FWD	1389	44	60	01.90-03.93	*
1.4 S (14 NV)		Gasolina	FWD	1389	55	75	01.90-03.93	*
1.6 GSI (C 16 SEI)		Gasolina	FWD	1598	72	98	09.89-03.93	*
1.6 GSI (E 16 SE)		Gasolina	FWD	1598	74	100	05.88-03.92	*
1.5 D (15 D)		Diesel	FWD	1488	37	50	09.87-03.93	*
1.5 TD (15 DT (T4EC1))		Diesel	FWD	1488	49	67	01.90-03.93	*
NOVAVAN (S83) 01.90-10.94					Furgón/hatchback (LCVs-N1 Segment)			
1.5 D (15 D)		Diesel	FWD	1488	37	50	01.91-10.94	*