

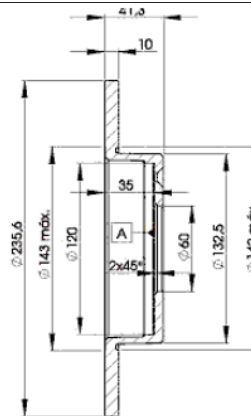
LISTA DE APLICACIONES - BUYERS GUIDE

78RBD26193



Weight: 6.320

O.E.M.	MAKE
5 69 028	OPEL
90 008 003	VAUXHALL
90 086 193	VAUXHALL



78RBD26193



Ø236x10x41

Sin Filas



Trac.	CC	Kw	CV
-------	----	----	----



Front / Rear

BEDFORD

ASTRA VAN II 09.84-08.91

[CAMBIADO]:Furgón/Break
(Compact car-C Segment)

1.3 (13 N)	Gasolina	FWD	1297	34	46	09.84-09.89	*
1.3 (13 NB)	Gasolina	FWD	1297	44	60	09.84-09.89	*
1.3 (13 S)	Gasolina	FWD	1297	55	75	09.84-09.89	*
1.4 (14 NV)	Gasolina	FWD	1389	44	60	09.89-08.91	*

OPEL

CORSA A (S83) 09.82-03.93

[CAMBIADO]:Fastback (Supermini
car-B Segment)

1.0 (F08, M08, F68, M68) (10 S)	Gasolina	FWD	993	33	45	09.82-03.93	*
1.2 i (F08, M08, F68, M68) (C 12 NZ)	Gasolina	FWD	1195	33	45	09.89-03.93	*
1.2 (F08, M08, F68, M68) (12 NC)	Gasolina	FWD	1196	33	45	09.82-08.90	*
1.2 (F08, M08, F68, M68) (E 12 GV)	Gasolina	FWD	1196	33	45	09.82-08.90	*
1.2 N (F08, M08, F68, M68) (12 NV)	Gasolina	FWD	1196	38	52	01.90-03.93	*
1.2 S (F08, M08, F68, M68) (12 ST)	Gasolina	FWD	1196	40	55	09.82-02.90	*
1.2 (F08, M08, F68, M68) (12 S)	Gasolina	FWD	1196	44	60	09.82-08.90	*
1.3 (F08, M08, F68, M68) (13 NB)	Gasolina	FWD	1297	44	60	09.85-10.89	*
1.3 i (F08, M08, F68, M68) (C 13 N)	Gasolina	FWD	1297	44	60	09.86-09.90	*
1.3 S (F08, M08, F68, M68) (13 SB)	Gasolina	FWD	1297	51	70	09.82-10.89	*
1.3 GL	Gasolina	FWD	1297	55	75	09.82-03.93	*
1.4 i (F08, M08, F68, M68) (C 14 NZ)	Gasolina	FWD	1389	40	54	01.85-03.93	*
1.4 i (F08, M08, F68, M68) (C 14 NZ)	Gasolina	FWD	1389	44	60	01.90-03.93	*
1.4 S (F08, M08, F68, M68) (14 NV)	Gasolina	FWD	1389	53	72	01.90-03.93	*

CORSA A (S83) 02.86-09.94

Furgón/hatchback (LCVs-N1
Segment)

1.0 (F08, W5L) (10 S)	Gasolina	FWD	993	33	45	02.86-04.89	*
-----------------------	----------	-----	-----	----	----	-------------	---

LISTA DE APLICACIONES - BUYERS GUIDE

1.2 (F08, W5L) (C 12 NZ)		Gasolina	FWD	1195	33	45	08.90-07.94	*
1.2 (F08, W5L) (12 NC)		Gasolina	FWD	1196	33	45	02.86-04.89	*
1.2 (F08, W5L) (E 12 GV)		Gasolina	FWD	1196	33	45	02.86-04.89	*
1.2 (F08, W5L) (12 NV)		Gasolina	FWD	1196	37	50	08.90-07.94	*
1.2 (F08, W5L) (12 ST)		Gasolina	FWD	1196	40	54	02.86-04.89	*
1.2 (F08, W5L) (12 S)		Gasolina	FWD	1196	44	60	02.86-07.90	*
1.3 (F08, W5L) (13 NB)		Gasolina	FWD	1297	44	60	02.86-04.89	*
1.3 (F08, W5L) (13 SB)		Gasolina	FWD	1297	51	69	02.86-04.89	*
CORSA A (S83) 09.82-03.93					Sedán (Supermini car-B Segment)			
1.0 (F11, M11, F19, M19) (10 S)		Gasolina	FWD	993	33	45	09.82-09.92	*
1.2 N (F11, M11, F19, M19) (12 NC)		Gasolina	FWD	1196	33	45	01.85-10.87	*
1.2 N (F11, M11, F19, M19) (E 12 GV)		Gasolina	FWD	1196	33	45	01.85-10.87	*
1.2 S (F11, M11, M19, F19) (12 ST)		Gasolina	FWD	1196	40	55	09.82-03.93	*
1.2 S (F11, M11, F19, M19) (12 S)		Gasolina	FWD	1196	43	58	09.82-10.87	*
1.3 (F11, F19, M11, M19) (13 NB)		Gasolina	FWD	1297	44	60	09.85-10.87	*
1.3 (F11, F19, M11, M19) (C 13 N)		Gasolina	FWD	1297	44	60	09.85-10.87	*
1.3 S (F11, M11, F19, M19) (13 SB)		Gasolina	FWD	1297	51	70	09.82-10.87	*
1.3 GL		Gasolina	FWD	1297	55	75	09.82-03.93	*
1.4 i (F11, M11, F19, M19) (C 14 NZ)		Gasolina	FWD	1389	44	60	10.89-03.93	*
1.4 S (F11, M11, F19, M19) (14 NV)		Gasolina	FWD	1389	53	72	09.89-03.93	*
KADETT D (35_, 36_, 45_, 46_) 08.79-08.84					[CAMBIADO]:Break (Compact car-C Segment)			
1.2 (12 N)		Gasolina	FWD	1196	39	53	08.79-07.82	*
1.2 S (12 S)		Gasolina	FWD	1196	44	60	08.79-08.84	*
1.3 N (13 N)		Gasolina	FWD	1297	44	60	08.79-08.84	*
1.3 S (13 S)		Gasolina	FWD	1297	55	75	08.79-08.84	*
KADETT D (31_-34_, 41_-44_) 08.79-08.84					[CAMBIADO]:Fastback (Compact car-C Segment)			
1.0 (10 N)		Gasolina	FWD	993	30	41	09.79-08.82	*
1.0 (10 S)		Gasolina	FWD	993	33	45	09.79-08.84	*
1.0 (10 S)		Gasolina	FWD	993	37	50	08.79-12.83	*
1.2 (12 N)		Gasolina	FWD	1196	39	53	08.79-07.82	*
1.2 (12 ST)		Gasolina	FWD	1196	40	55	08.82-08.84	*
1.2 S (12 S)		Gasolina	FWD	1196	44	60	08.79-08.84	*
1.3 N (13 N)		Gasolina	FWD	1297	44	60	08.79-08.84	*
1.3 S (13 S)		Gasolina	FWD	1297	55	75	08.79-08.84	*
KADETT D (32_,37_,39, _42) 08.79-08.84					Sedán (Compact car-C Segment)			
1.0 (10 N)		Gasolina	FWD	993	30	41	09.79-08.82	*
1.0 (10 S)		Gasolina	FWD	993	33	45	09.79-08.84	*
1.2 S (12 S)		Gasolina	FWD	1196	44	60	08.79-08.84	*
1.3 N (C 13 N)		Gasolina	FWD	1297	44	60	08.79-08.84	*
1.3 S (13 S)		Gasolina	FWD	1297	55	75	08.79-08.84	*
1.6		Gasolina	FWD	1598	51	69	09.79-08.84	*
1.6		Gasolina	FWD	1598	55	75	09.79-08.84	*
1.6 D (16 D)		Diesel	FWD	1598	40	54	03.82-08.84	*
KADETT E (T85) 09.84-08.91					[CAMBIADO]:Break (Compact car-C Segment)			
1.2 (C15, C35, D15, D35) (12 SC)		Gasolina	FWD	1196	40	55	09.84-07.86	*
1.3 i Cat (C15, C35, D15, D35) (C 13 N)		Gasolina	FWD	1297	44	60	09.85-08.91	*
1.3 N (C15, C35, D15, D35) (13 N)		Gasolina	FWD	1297	44	60	09.84-08.91	*
1.3 (C15, C35, D15, D35) (13 S)		Gasolina	FWD	1297	50	68	01.85-12.87	*
1.3 S (C15, C35, D15, D35) (13 S)		Gasolina	FWD	1297	55	75	09.84-08.87	*

LISTA DE APLICACIONES - BUYERS GUIDE

1.4 i (C15, C35, D15, D35) (C 14 NZ)		Gasolina	FWD	1389	44	60	01.90-08.91	*
1.4 S (C15, C35, D15, D35) (14 NV)		Gasolina	FWD	1389	55	75	01.90-08.91	*
KADETT E (T85) 09.84-12.93					[CAMBIADO]:Fastback (Compact car-C Segment)			
1.2 (C08, C48, D08, D48) (12 SC)		Gasolina	FWD	1196	40	55	09.84-07.86	*
1.3 i Cat (C08, C48, D08, D48) (C 13 N)		Gasolina	FWD	1297	44	60	09.85-08.91	*
1.3 N (C08, C48, D08, D48) (13 N)		Gasolina	FWD	1297	44	60	09.84-08.91	*
1.3 N (C08, C48, D08, D48) (13 NB)		Gasolina	FWD	1297	44	60	09.84-08.91	*
1.3 (C08, C48, D08, D48) (13 S)		Gasolina	FWD	1297	50	68	01.85-12.87	*
1.3 S (C08, C48, D08, D48) (13 S)		Gasolina	FWD	1297	55	75	09.84-08.87	*
1.4 i (C08, C48, D08, D48) (C 14 NZ)		Gasolina	FWD	1389	44	60	01.90-08.91	*
1.4 S (C08, C48, D08, D48) (14 NV)		Gasolina	FWD	1389	55	75	01.90-08.91	*
1.4 S (C08, C48, D08, D48) (C 14 SE)		Gasolina	FWD	1389	60	82	09.89-08.91	*
KADETT E (T85) 08.84-09.93					[CAMBIADO]:Furgón/Break (Compact car-C Segment)			
1.3 N (C70, D70) (13 N)		Gasolina	FWD	1297	44	60	09.84-07.89	*
1.3 N (C70, D70) (13 NB)		Gasolina	FWD	1297	44	60	09.84-07.89	*
1.4 i (C70, D70) (C 14 NZ)		Gasolina	FWD	1389	44	60	01.90-08.91	*
KADETT E / MONZA E (T85) 09.84-12.93					Sedán (Compact car-C Segment)			
1.2 (C19, D19) (12 SC)		Gasolina	FWD	1196	40	55	09.84-07.86	*
1.3 i Cat (C19, D19) (C 13 N)		Gasolina	FWD	1297	44	60	09.85-08.91	*
1.3 N (C19, D19) (13 N)		Gasolina	FWD	1297	44	60	09.84-08.89	*
1.3 N (C19, D19) (13 NB)		Gasolina	FWD	1297	44	60	09.84-08.89	*
1.3 S (C19, D19) (13 S)		Gasolina	FWD	1297	55	75	09.84-08.87	*
1.4 i (C19, D19) (C 14 NZ)		Gasolina	FWD	1389	44	60	01.90-08.91	*
1.4 S (C19, D19) (14 NV)		Gasolina	FWD	1389	55	75	01.90-08.91	*
KADETT C AERO 09.76-08.79					Cabrio (Compact car-C Segment)			
1.2 (12 S)		Gasolina	RWD	1196	44	60	09.76-08.79	*
VAUXHALL								
ASTRA Mk I 09.79-08.86					[CAMBIADO]:Break (Compact car-C Segment)			
1.3		Gasolina	FWD	1297	51	69	08.82-08.84	*
1.3 S (13 S)		Gasolina	FWD	1297	55	75	09.79-08.84	*
1.6 D (16 D)		Diesel	FWD	1598	40	54	02.82-08.86	*
ASTRA Mk I 09.79-08.86					[CAMBIADO]:Fastback (Compact car-C Segment)			
1.2		Gasolina	FWD	1196	40	54	10.79-08.84	*
1.2 S (12 S)		Gasolina	FWD	1196	44	60	02.82-08.84	*
1.3		Gasolina	FWD	1297	51	69	09.80-08.84	*
1.3 S (13 S)		Gasolina	FWD	1297	55	75	09.79-08.84	*
1.6 D (16 D)		Diesel	FWD	1598	40	54	03.82-08.86	*
ASTRA Mk I 10.79-08.84					Sedán (Compact car-C Segment)			
1.2 (12 S)		Gasolina	FWD	1196	40	54	10.79-08.84	*
1.2 (12 S)		Gasolina	FWD	1196	44	60	04.80-07.82	*
ASTRA Mk II (T85) 09.84-08.91					[CAMBIADO]:Break (Compact car-C Segment)			
1.2 (12 S)		Gasolina	FWD	1196	44	60	09.84-12.88	*
1.4 S (14 NV)		Gasolina	FWD	1389	55	75	01.89-08.91	*
ASTRA Mk II BELMONT (T85) 09.85-12.91					Sedán (Compact car-C Segment)			
1.4 i (C 14 NZ)		Gasolina	FWD	1389	44	60	01.90-12.91	*
1.4 S (14 NV)		Gasolina	FWD	1389	55	75	10.89-12.91	*

LISTA DE APLICACIONES - BUYERS GUIDE

ASTRA Mk II CC (T85) 09.84-08.91					[CAMBIADO]:Fastback (Compact car-C Segment)			
1.2 (12 S)		Gasolina	FWD	1196	40	54	09.84-08.91	*
1.2 (12 S)		Gasolina	FWD	1196	44	60	09.84-08.91	*
1.4 i (C 14 NZ)		Gasolina	FWD	1389	44	60	01.90-08.91	*
1.4 S (14 NV)		Gasolina	FWD	1389	55	75	01.90-08.91	*
NOVA (S83) 09.82-12.93					Sedán (Supermini car-B Segment)			
1.2 (C 12 NZ)		Gasolina	FWD	1195	33	45	02.92-12.93	*
1.2 N		Gasolina	FWD	1196	33	45	02.92-12.93	*
1.2 S (12 ST)		Gasolina	FWD	1196	40	55	09.82-10.87	*
1.3 i		Gasolina	FWD	1297	44	60	09.85-10.87	*
1.3 S (13 SB)		Gasolina	FWD	1297	51	70	09.82-10.87	*
1.4 (C 14 NZ)		Gasolina	FWD	1389	44	59	10.90-08.92	*
1.4 S (14 NV)		Gasolina	FWD	1389	55	75	01.90-02.93	*
1.4 (C 14 SE)		Gasolina	FWD	1389	60	81	09.90-08.92	*
NOVA CC (S83) 05.83-03.93					[CAMBIADO]:Fastback (Supermini car-B Segment)			
1.2 (C 12 NZ)		Gasolina	FWD	1196	33	45	09.89-03.93	*
1.2 i		Gasolina	FWD	1196	33	45	01.85-03.93	*
1.2 N (12 NV)		Gasolina	FWD	1196	38	52	01.90-03.93	*
1.2 S (12 ST)		Gasolina	FWD	1196	40	55	05.83-02.90	*
1.2 S		Gasolina	FWD	1196	43	58	01.88-02.90	*
1.3 i		Gasolina	FWD	1297	44	60	09.85-10.89	*
1.3 i Cat		Gasolina	FWD	1297	44	60	09.89-03.93	*
1.3 S (13 SB)		Gasolina	FWD	1297	51	70	05.83-10.89	*
1.4 i (C 14 NZ)		Gasolina	FWD	1389	44	60	01.90-03.93	*
1.4 S (14 NV)		Gasolina	FWD	1389	55	75	01.90-03.93	*
1.4 i S (C 14 SE)		Gasolina	FWD	1389	60	82	09.91-03.93	*
NOVAVAN (S83) 01.90-10.94					Furgón/hatchback (LCVs-N1 Segment)			
1.2 (12 NV)		Gasolina	FWD	1196	38	52	01.90-10.94	*
1.4 (14 NV)		Gasolina	FWD	1389	55	74	11.90-03.93	*