

# LISTA DE APLICACIONES - BUYERS GUIDE

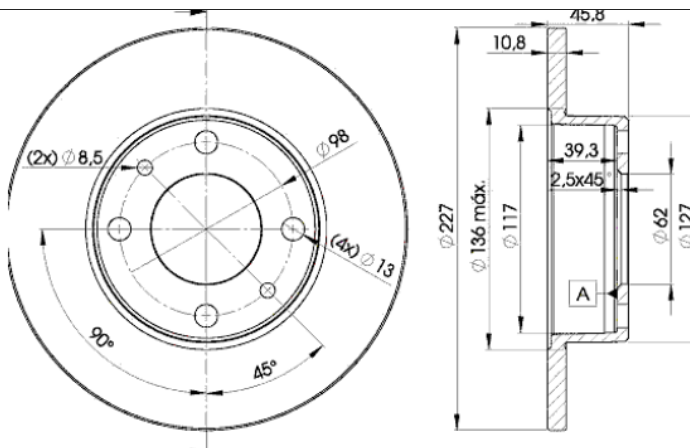
## 78RBD25812



8 424073 155818

Weight: 6.360

O.E.M.	MAKE
1 650 025 3	FIAT
4 139 010	AUTOBIANCHI
4 208 311	AUTOBIANCHI
4 38 5812	SEAT
4 385 812	AUTOBIANCHI
655 438 512	FSO
655 439 010	FSO
7 173 842 2	LANCIA
9 438 581 2	AUTOBIANCHI
9 443 901 0	AUTOBIANCHI
RF1 650 0250	SEAT
RF1 650 0253	SEAT
RF16500250	AUTOBIANCHI
RF16-500250	LANCIA
RF16500253	AUTOBIANCHI
RF16-500253	LANCIA
SE0 221 650 02 A	SEAT



## 78RBD25812

E1 90R-02C0415/0064



Ø227x10.8x45.8

Sin Filas



Trac.	CC	Kw	CV	
				Front / Rear

### AUTOBIANCHI

#### A 111 08.69-11.72

1.4 (124 BLC.000)	Gasolina	FWD	1438	51	70	08.69-11.72	*
-------------------	----------	-----	------	----	----	-------------	---

#### A 112 10.69-12.86

[CAMBIADO]:Fastback (Supermini car-B Segment)							
0.9 Junior (A112A 5.000)	Gasolina	FWD	903	31	42	07.75-12.85	*
0.9 Junior (A112B2.000)	Gasolina	FWD	903	31	42	07.75-12.85	*
0.9 (A112A 5.000)	Gasolina	FWD	903	32	44	10.69-12.72	*
0.9 (A112A 5.000)	Gasolina	FWD	903	33	45	01.76-12.78	*
0.9 E (A112A 5.000)	Gasolina	FWD	903	34	47	01.73-12.77	*
1.0 E,Elite,LX (A112B1.000)	Gasolina	FWD	965	35	48	11.77-12.85	*
1.0 Abarth (A112A1.000)	Gasolina	FWD	982	43	58	09.71-12.75	*
1.0 Abarth (A112A2.000)	Gasolina	FWD	1050	51	70	01.74-12.84	*

#### Y10 (156) 03.85-10.95

[CAMBIADO]:Fastback (City car-A Segment)							
1.0	Gasolina	FWD	999	32	44	03.86-12.92	*
1.0 (156 A2.000)	Gasolina	FWD	999	33	45	03.85-10.95	*
1.0 Cat (156A2.246)	Gasolina	FWD	999	33	45	10.87-10.95	*
1.0 4WD (156 A3.000)	Gasolina	4WD	999	37	50	12.86-10.95	*
1.0 (156A.000)	Gasolina	FWD	1049	41	56	03.85-10.95	*
1.0 Turbo (156A1.000)	Gasolina	FWD	1049	63	85	03.85-10.95	*
1.1	Gasolina	FWD	1108	37	50	02.90-09.92	*
1.1 4WD (156AC)	Gasolina	4WD	1108	37	50	02.90-04.91	*
1.1 4WD (156AH)	Gasolina	4WD	1108	40	54	10.94-08.95	*
1.1 (156C.000)	Gasolina	FWD	1108	42	57	06.89-10.95	*
1.1 4WD (156C.000)	Gasolina	4WD	1108	42	57	06.89-10.95	*

# LISTA DE APLICACIONES - BUYERS GUIDE

1.1 i.e. Cat (156C.046)	Gasolina	FWD	1108	42	57	09.90-10.95	*
<b>FIAT</b>							
<b>124 (124_) 06.67-02.76</b>				<b>Coupé (Large family car-D Segment)</b>			
1400 Sport (124 AC.000)	Gasolina	RWD	1438	66	90	06.67-10.72	*
1600 Sport (132 AC.000)	Gasolina	RWD	1592	76	104	08.72-12.75	*
1600 Sport (132 AC.000)	Gasolina	RWD	1592	80	108	08.72-02.76	*
1600 (BC 1) (125 B.000)	Gasolina	RWD	1608	74	100	11.71-10.73	*
1600 (BC 1) (125 B.000)	Gasolina	RWD	1608	81	110	04.70-10.73	*
1800 Sport	Gasolina	RWD	1756	82	112	01.73-02.76	*
1800 Sport (CC1)	Gasolina	RWD	1756	87	118	01.73-02.76	*
<b>124 (124_) 07.66-07.75</b>				<b>Sedán (Large family car-D Segment)</b>			
1200 (TA) (124 A.000)	Gasolina	RWD	1197	44	60	07.66-10.73	*
1200 (124A) (124 A.000)	Gasolina	RWD	1197	48	65	09.67-07.75	*
1400 Special (124 B2.000)	Gasolina	RWD	1438	51	70	12.68-12.72	*
1400 Special (124A) (124 B2.000)	Gasolina	RWD	1438	55	75	01.71-07.75	*
1500 Special T (124 AC.000)	Gasolina	RWD	1438	59	80	01.71-07.75	*
1600 Special T (124A) (124 A9.000)	Gasolina	RWD	1592	70	95	01.73-07.75	*
1600 Special T (124A) (132 AC.000)	Gasolina	RWD	1592	70	95	01.73-07.75	*
<b>124 Familiare (124_) 04.67-03.75</b>				<b>[CAMBIADO]:Break (Large family car-D Segment)</b>			
1200 (124 A.000)	Gasolina	RWD	1197	44	60	04.67-05.73	*
1200 (124 A.000)	Gasolina	RWD	1197	48	65	05.73-03.75	*
1.4 (124 B.000)	Gasolina	RWD	1438	51	69	09.67-05.71	*
<b>124 Spider (124_) 01.66-11.85</b>				<b>Cabrio (Large family car-D Segment)</b>			
1500 Sport (BS) (124 AC.000)	Gasolina	RWD	1438	66	90	01.66-12.72	*
1600 Sport (BS1) (125 B.000)	Gasolina	RWD	1608	74	100	11.69-08.73	*
1600 Sport (CS) (125 B.000)	Gasolina	RWD	1608	76	104	01.69-12.74	*
1600 Sport (BS1) (125 B.000)	Gasolina	RWD	1608	81	110	01.69-12.74	*
1600 Sport (BS) (125 B.000)	Gasolina	RWD	1608	82	112	11.69-08.73	*
1800 Sport (CS1)	Gasolina	RWD	1739	82	112	01.73-07.75	*
1800 Sport (CS1) (132 AC1.000)	Gasolina	RWD	1756	87	118	01.72-12.77	*
1800 Rally Abarth (CSA) (132 AC1.000)	Gasolina	RWD	1756	94	128	09.72-07.75	*
2000 (132 C3.031)	Gasolina	RWD	1995	77	105	04.72-11.85	*
<b>125 (125_) 07.67-03.74</b>				<b>Sedán (Large family car-D Segment)</b>			
1.3 (131 A.000)	Gasolina	RWD	1297	48	65	06.68-03.74	* *
1.6 (TA) (125 A.000)	Gasolina	RWD	1608	66	90	07.67-03.74	*
1.6 (TA) (125 B.000)	Gasolina	RWD	1608	74	100	10.68-10.73	*
<b>127 (127_) 06.71-05.96</b>				<b>[CAMBIADO]:Fastback (Supermini car-B Segment)</b>			
0.9 (100 GL.048)	Gasolina	FWD	903	29	40	06.71-05.83	*
0.9 (127A) (100 GL.000)	Gasolina	FWD	903	33	45	09.71-12.84	*
1.0 (127 A.000)	Gasolina	FWD	1049	37	50	04.77-12.86	*
1.0 Sport (127 A1.000)	Gasolina	FWD	1049	51	70	07.78-02.82	*
1.3 Sport (127 A3.000)	Gasolina	FWD	1301	55	75	12.81-05.83	*
1.3 Diesel (127 A5.000)	Diesel	FWD	1301	33	45	04.81-12.86	*
<b>127 Panorama (127_) 01.77-12.86</b>				<b>[CAMBIADO]:Break (Supermini car-B Segment)</b>			
1.0 (127 A.000)	Gasolina	FWD	1049	37	50	01.77-12.86	*
1.3 D (127 A5.000)	Diesel	FWD	1301	33	45	06.81-12.86	*

# LISTA DE APLICACIONES - BUYERS GUIDE

<b>128 (128_) 03.72-02.81</b>					<b>Coupé (Compact car-C Segment)</b>			
1.1 (AC 5) (128 AC5.000)		Gasolina	FWD	1116	47	64	03.72-02.81	*
1.1 (AC 5) (128 AC5.000)		Gasolina	FWD	1116	48	65	08.75-02.81	*
1.3 Berlinetta (AC) (128 AC.000)		Gasolina	FWD	1290	54	73	06.75-12.79	*
1.3 (AC) (128 A1.000)		Gasolina	FWD	1290	55	75	03.72-12.79	*
1.3 (AC) (128 AC.000)		Gasolina	FWD	1290	55	75	03.72-12.79	*
<b>128 (128_) 03.69-12.84</b>					<b>Sedán (Compact car-C Segment)</b>			
1.1 (128 A.048)		Gasolina	FWD	1116	33	45	02.75-09.81	*
1.1 (128A) (128 A.000)		Gasolina	FWD	1116	40	55	03.69-12.84	*
1.3 (128A) (128 A1.000)		Gasolina	FWD	1290	44	60	08.74-12.84	*
1.3 Rally (128A) (128 AR.000)		Gasolina	FWD	1290	49	67	07.71-02.76	*
<b>128 Familiare (128_) 10.69-10.82</b>					<b>[CAMBIADO]:Break (Compact car-C Segment)</b>			
1.1 (AF) (128 A.048)		Gasolina	FWD	1116	33	45	02.75-02.81	*
1.1 (AF) (128 A.000)		Gasolina	FWD	1116	40	55	10.69-10.82	*
1.3 (AF1) (128 A1.000)		Gasolina	FWD	1290	44	60	12.74-10.82	*
<b>131 (131_) 10.74-03.87</b>					<b>Sedán (Compact car-C Segment)</b>			
1.3 Mirafiori (131 A6.000)		Gasolina	RWD	1297	40	54	10.74-09.81	*
1.3 Mirafiori (131A) (131 A.000)		Gasolina	RWD	1297	48	65	10.74-12.82	*
1.3 Super Mirafiori (131 B.000)		Gasolina	RWD	1297	57	78	03.78-12.80	*
1.4 Mirafiori (131 C.000)		Gasolina	RWD	1367	51	70	11.80-01.84	*
1.4 Mirafiori (131 C1.000)		Gasolina	RWD	1367	51	70	11.80-01.84	*
1.4 Super Mirafiori (131 C1.000)		Gasolina	RWD	1367	55	75	04.81-12.83	*
1.6 (131A1) (131 A1.000)		Gasolina	RWD	1585	55	75	10.74-09.81	*
1.6 (131 C2.000)		Gasolina	RWD	1585	63	85	11.76-12.84	*
1.6 Super (131 C3.000)		Gasolina	RWD	1585	71	97	03.78-01.84	*
1.6 Super Mirafiori (A) (131 B1.000)		Gasolina	RWD	1585	72	98	03.79-03.82	*
2.0 Super (131 C4.000)		Gasolina	RWD	1995	83	113	01.81-12.84	*
2.0 Racing (131 B2.000)		Gasolina	RWD	1995	85	115	06.78-12.81	*
2.0 Abarth Rally (131 B2.000)		Gasolina	RWD	1995	103	140	01.76-07.80	*
2.0 D (8144.65)		Diesel	RWD	1995	44	60	03.78-03.87	*
2.5 D (8144.61)		Diesel	RWD	2445	53	72	06.78-02.84	*
<b>131 Familiare/Panorama (131_) 03.75-12.84</b>					<b>[CAMBIADO]:Break (Compact car-C Segment)</b>			
1.3 Mirafiori (131AF) (131 A6.000)		Gasolina	RWD	1297	40	54	03.75-12.78	*
1.3 Mirafiori (AF) (131 A.000)		Gasolina	RWD	1297	48	65	03.75-03.82	*
1.4 Mirafiori (131 C.000)		Gasolina	RWD	1367	51	70	11.81-01.84	*
1.4 Mirafiori (131 C1.000)		Gasolina	RWD	1367	51	70	11.81-01.84	*
1.6 CL (AF1) (131 A1.000)		Gasolina	RWD	1585	55	75	03.75-12.78	*
1.6 (131 C2.000)		Gasolina	RWD	1585	63	85	11.80-12.84	*
1.6 Super (131 C3.000)		Gasolina	RWD	1585	72	97	12.79-12.81	*
2.0 Super (131 C4.000)		Gasolina	RWD	1995	83	113	01.81-12.84	*
2.0 Mirafiori (131AF2) (131 B2.000)		Gasolina	RWD	1995	84	114	11.80-12.84	*
2.0 D (8144.65)		Diesel	RWD	1995	44	60	07.78-08.84	*
2.5 Super Diesel (AF) (8144.61)		Diesel	RWD	2445	53	72	03.79-12.84	*
<b>132 (132_) 04.72-12.82</b>					<b>Sedán (Large family car-D Segment)</b>			
1.6 (132 C.000)		Gasolina	RWD	1585	65	88	05.77-09.82	* *
1.6 (132 C6.000)		Gasolina	RWD	1585	66	90	03.77-12.81	*
1.6 (132 C.000)		Gasolina	RWD	1585	72	98	01.76-12.82	* *
1.6 (132 BB OA O)		Gasolina	RWD	1592	72	98	04.72-01.76	* *
1.7 Special (A1) (132 B1.000)		Gasolina	RWD	1756	77	105	04.72-01.74	* *

# LISTA DE APLICACIONES - BUYERS GUIDE

1.7 GLS (A1) (132 B1.000)		Gasolina	RWD	1756	79	107	04.74-12.75	*	*
1.7 GLS (A1) (132 B1.000)		Gasolina	RWD	1756	82	112	11.75-01.77	*	*
2.0 (132 C2.000)		Gasolina	RWD	1995	83	113	01.76-06.81	*	*
147 / SPAZIO / VIVACE (147_) 10.76-12.96					[CAMBIADO]:Fastback (Compact car-C Segment)				
1.0 (127 A.000)		Gasolina	FWD	1049	37	50	10.76-12.95	*	
1.3 (127 A2.011)		Gasolina	FWD	1297	45	61	07.80-08.84		
1.3 Rallye (127 A2.011)		Gasolina	FWD	1297	53	72	07.80-07.83		
1.4		Gasolina	FWD	1372	46	63	10.80-10.96		
1.3 D (127 A5.000)		Diesel	FWD	1301	33	45	07.82-06.84		
1.3 D (127 A5.000)		Diesel	FWD	1301	36	49	10.80-10.95		
147 Panorama (147_) 04.80-12.95					[CAMBIADO]:Break (Compact car-C Segment)				
1.3 (127 A2.011)		Gasolina	FWD	1297	41	56	07.80-07.83	*	
1.3 (127 A2.011)		Gasolina	FWD	1297	45	61	01.82-12.86		
1.3 D (127 A5.000)		Diesel	FWD	1301	33	45	07.82-07.83		
1.3 D (127 A5.000)		Diesel	FWD	1301	36	49	07.84-12.86		
850 (100_) 07.64-12.72					Coupé (Supermini car-B Segment)				
0.9 Sport (100 GL.040)		Gasolina	RWD	903	38	52	02.68-10.72	*	
850 (100_) 07.64-10.72					Sedán (Supermini car-B Segment)				
0.8 (100 G.000)		Gasolina	RWD	843	25	34	07.64-10.72	*	
0.8 Special (GB) (100 GB.000)		Gasolina	RWD	843	35	48	03.68-10.72		
850 Spider (100_) 10.65-12.73					Cabrió (Supermini car-B Segment)				
0.8 (126 G.100)		Gasolina	RWD	843	36	49	10.65-10.68	*	
900 T/E Panorama (200_) 01.78-01.86					Bus (Minibus-M2-Segment)				
0.9 (100 GF 000)		Gasolina	RWD	903	26	35	01.78-01.86	*	
900 T/E Pulmino (200_) 01.78-01.86					Bus (Minibus-M2-Segment)				
0.9 (100 GF 000)		Gasolina	RWD	903	26	35	01.78-01.86	*	
ARGENTA (132_) 05.77-03.87					Sedán (Large family car-D Segment)				
1600 i.e (132 D.000)		Gasolina	RWD	1585	66	90	04.81-12.85	*	
1600 (132 D.000)		Gasolina	RWD	1585	72	98	04.81-12.85		
2000 (132 C2.000)		Gasolina	RWD	1995	83	113	06.78-12.85	*	
2000 (132 D1.000)		Gasolina	RWD	1995	83	113	06.78-12.85		
2000 i.e. (132 C3.000)		Gasolina	RWD	1995	90	122	06.81-07.86		
2000 Volumex (132 C3.000)		Gasolina	RWD	1995	99	135	06.84-07.85		
2500 Diesel (8144.61)		Diesel	RWD	2445	53	72	06.81-11.85		
2500 Turbodiesel (8144.61.500.81)		Diesel	RWD	2445	66	90	07.83-08.85		
CAMPAGNOLA (110_) 06.74-10.89					Closed SUV (Off-Road SUV-J Segment)				
2.0 (6132 AZ 2.000)		Gasolina	4WD	1995	59	80	06.74-10.89	*	
2.4 D (8144.61.200)		Diesel	4WD	2445	53	72	06.74-10.89		
FIORINO (127_) 10.77-12.87					Furgoneta/MPV (LCVs-N1 Segment)				
900 (100 GL.000)		Gasolina	FWD	903	33	45	10.77-10.86	*	
1.0 (127 A.000)		Gasolina	FWD	1049	37	50	01.80-12.87		
1050 (127 A.000)		Gasolina	FWD	1049	37	50	01.80-12.87		
1.0 (156 A.000)		Gasolina	FWD	1049	41	56	12.86-04.88		
1.3 D (127 A5.000)		Diesel	FWD	1301	33	45	03.82-01.88		
FIORINO (147_) 01.80-10.93					MPV (Mini MPV-M1 Segment)				
1.3 D		Diesel	FWD	1301	33	45	01.82-01.88	*	

# LISTA DE APLICACIONES - BUYERS GUIDE

FIORINO (147_) 10.77-10.89					Pick-up (LCVs-N1 Segment)			
1.0 (127 A.000)		Gasolina	FWD	1049	37	50	06.82-10.87	*
1.0 (127A.046)		Gasolina	FWD	1049	37	50	06.82-10.87	*
PANDA (141_) 03.80-07.04					[CAMBIADO]:Fastback (City car-A Segment)			
650 (141 A.000)		Gasolina	FWD	652	22	30	01.82-07.04	*
650		Gasolina	FWD	652	22	30	01.82-07.04	*
750 (156 A4.000)		Gasolina	FWD	770	25	34	01.86-10.03	*
750		Gasolina	FWD	770	25	34	01.86-01.95	*
750 Cat		Gasolina	FWD	770	25	34	01.95-10.03	*
800 (100 GL6.000)		Gasolina	FWD	843	25	34	02.81-12.85	*
900 (1170 A1.046)		Gasolina	FWD	899	29	40	04.92-12.96	*
0.9 Fire S A las 4 ruedas (146 A.048)		Gasolina	4WD	903	33	45	10.80-04.86	*
900 (100 GL3.000)		Gasolina	FWD	903	33	45	10.80-06.94	*
900 (146 A.000)		Gasolina	FWD	903	33	45	10.80-06.94	*
950 (A 112 B1.054)		Gasolina	FWD	965	35	48	09.82-08.83	*
950 4x4 (A 112 B1.054)		Gasolina	4WD	965	35	48	09.83-12.86	*
1000 (156 A2.100)		Gasolina	FWD	999	32	44	01.86-04.92	*
1000 4x4 (156 A2.100)		Gasolina	4WD	999	32	44	01.86-07.89	*
1000 4x4 (156 A3.100)		Gasolina	4WD	999	32	44	01.86-07.89	*
1000 4x4 (141 C2.000)		Gasolina	4WD	999	33	45	05.86-12.94	*
1000 4x4 (156 A2.246)		Gasolina	4WD	999	33	45	05.86-12.94	*
1000 i.e. Cat (141 C2.000)		Gasolina	FWD	999	33	45	10.87-08.98	*
1000 i.e. Cat (156 A2.246)		Gasolina	FWD	999	33	45	10.87-08.98	*
1000 (156 A3.000)		Gasolina	FWD	999	37	50	01.85-12.92	*
1000 4x4 (156 A3.000)		Gasolina	4WD	999	37	50	01.86-12.92	*
1100 (156 C.046)		Gasolina	FWD	1108	37	50	05.91-12.99	*
1100 Trekking 4x4 (156 C.046)		Gasolina	4WD	1108	37	50	10.91-07.04	*
1100 (176 B2.000)		Gasolina	FWD	1108	40	54	02.95-09.03	*
1100 (187 A1.000)		Gasolina	FWD	1108	40	54	02.95-09.03	*
1100 4x4 (176 B2.000)		Gasolina	4WD	1108	40	54	02.95-07.04	*
1300 D (156 A5.000)		Diesel	FWD	1302	27	37	04.86-12.92	*
PANDA (141_) 01.86-02.04					Furgón/hatchback (LCVs-N1 Segment)			
750 (141 B.000)		Gasolina	FWD	764	25	34	01.86-07.92	*
1000 (156 A2.100)		Gasolina	FWD	999	32	44	01.86-02.92	*
1000 (156 A3.100)		Gasolina	FWD	999	32	44	01.86-02.92	*
1000 i.e (156 A2.246)		Gasolina	FWD	999	33	45	08.92-02.04	*
1.1 (156 C.046)		Gasolina	4WD	1108	37	50	05.91-03.95	*
1.1 (187 A1.000)		Gasolina	FWD	1108	40	54	09.00-02.04	*
1.1 4x4 (187 A1.000)		Gasolina	4WD	1108	40	54	09.00-02.04	*
D (156 A5.000)		Diesel	FWD	1302	27	37	05.86-04.91	*
REGATA (138_) 09.83-08.95					Sedán (Compact car-C Segment)			
70 1.3 (149 A3.000)		Gasolina	FWD	1301	48	65	09.83-07.89	*
70 1.3 (149 A7.000)		Gasolina	FWD	1301	48	65	09.83-07.89	*
70 1.3 (138 B2.000)		Gasolina	FWD	1301	50	68	09.83-07.86	*
75 1.5 (138 B3.048)		Gasolina	FWD	1498	55	75	12.83-07.89	*
75 1.5 (138 C2.048)		Gasolina	FWD	1498	55	75	12.83-07.89	*
75 1.5 (138 C3.048)		Gasolina	FWD	1498	55	75	12.83-07.89	*
75 1.5 (149 C1.000)		Gasolina	FWD	1498	55	75	12.83-07.89	*
75 i.e. 1.5		Gasolina	FWD	1498	55	75	07.85-07.89	*

# LISTA DE APLICACIONES - BUYERS GUIDE

85 1.5 (149 A5.000)		Gasolina	FWD	1498	58	79	05.85-12.87	*
85 Super 1.5 (138 B3.000)		Gasolina	FWD	1498	60	82	09.83-04.85	*
85 1.5 (138 B3.000)		Gasolina	FWD	1498	63	86	02.84-08.86	*
85 1.6 (149 A.000)		Gasolina	FWD	1585	60	82	10.83-06.90	*
100 Super 1.6 (149 C3.000)		Gasolina	FWD	1585	70	95	10.83-07.89	*
100 Super 1.6 (149 A2.000)		Gasolina	FWD	1585	74	101	10.83-12.90	*
100 Super 1.6 (149 A4.000)		Gasolina	FWD	1585	74	101	10.83-12.90	*
100 1.6		Gasolina	FWD	1585	77	105	09.83-08.86	*
90 i.e. 1.6 (149 C2.000)		Gasolina	FWD	1595	66	90	01.87-07.89	*
60 Diesel 1.7 (149 B3.000)		Diesel	FWD	1698	44	60	05.85-03.89	*
60 Diesel 1.7 (138 B6.000)		Diesel	FWD	1714	43	58	09.83-12.86	*
65 Diesel 1.9 (149 A1.000)		Diesel	FWD	1929	48	65	04.84-07.89	*
80 Turbo Diesel 1.9 (831 D1.000)		Diesel	FWD	1929	59	80	05.86-07.89	*
<b>REGATA Weekend (138_) 06.83-08.95</b>					<b>[CAMBIADO]:Break (Compact car-C Segment)</b>			
70 1.3 (138 B2.000)		Gasolina	FWD	1301	50	68	01.84-07.89	*
75 1.5 (138 B3.048)		Gasolina	FWD	1498	55	75	09.84-07.89	*
75 1.5 (138 C2.048)		Gasolina	FWD	1498	55	75	09.84-07.89	*
75 1.5 (138 C3.048)		Gasolina	FWD	1498	55	75	09.84-07.89	*
75 1.5 (149 C1.000)		Gasolina	FWD	1498	55	75	09.84-07.89	*
75 1.5 i.e. Cat		Gasolina	FWD	1498	55	75	12.86-07.89	*
85 1.5 (138 B3.000)		Gasolina	FWD	1498	60	82	01.84-04.89	*
85 1.5 (138 B3.000)		Gasolina	FWD	1498	63	86	06.83-08.86	*
1.6 (149 A.000)		Gasolina	FWD	1585	60	82	10.84-06.89	*
100 1.6 (RF) (149 A4.000)		Gasolina	FWD	1585	74	101	09.84-12.90	*
100 1.6 (RF) (149 C3.000)		Gasolina	FWD	1585	74	101	09.84-12.90	*
1.6 (138 AR.000)		Gasolina	FWD	1585	77	105	09.83-08.86	*
90 i.e. 1.6 (149 C2.000)		Gasolina	FWD	1595	66	90	01.87-07.89	*
60 Diesel 1.7 (149 B3.000)		Diesel	FWD	1698	44	60	01.84-12.89	*
65 Diesel 1.9 (149 A1.000)		Diesel	FWD	1929	48	65	04.84-07.89	*
80 Turbo Diesel 1.9 (831 D1.000)		Diesel	FWD	1929	59	80	05.86-07.89	*
<b>RITMO II / STRADA II (138A) 10.82-12.88</b>					<b>[CAMBIADO]:Fastback (Compact car-C Segment)</b>			
75 1.5		Gasolina	FWD	1498	55	75	09.85-12.88	*
75 1.5		Gasolina	FWD	1498	55	75	09.85-12.88	*
105 1.6		Gasolina	FWD	1585	77	105	01.83-12.87	*
60 Diesel 1.7		Diesel	RWD	1714	43	58	10.82-10.85	*
<b>RITMO / STRADA (138_) 01.78-12.88</b>					<b>[CAMBIADO]:Fastback (Compact car-C Segment)</b>			
1.0 (127 A6.000)		Gasolina	FWD	1049	44	60	09.78-09.82	*
1.1 (138 B.000)		Gasolina	FWD	1116	40	55	10.82-12.87	*
1.1 (138 B1.000)		Gasolina	FWD	1116	40	55	10.82-12.87	*
1.1 (138 C1.000)		Gasolina	FWD	1116	40	55	10.82-12.87	*
1.1 (138A) (138 C1.000)		Gasolina	FWD	1116	42	57	05.85-09.87	*
1.1 (146 A4.048)		Gasolina	FWD	1116	43	58	04.85-12.87	*
1.1 (138 B.000)		Gasolina	FWD	1116	44	60	08.80-08.88	*
1.1 (146 A4.000)		Gasolina	FWD	1116	44	60	08.80-08.88	*
1.3 (138 A1.000)		Gasolina	FWD	1301	48	65	01.78-08.85	*
1.3 (149 A3.000)		Gasolina	FWD	1301	48	65	01.78-08.85	*
1.3 (149 A7.000)		Gasolina	FWD	1301	48	65	01.78-08.85	*
1.3		Gasolina	FWD	1301	48	65	11.83-08.85	*
1.3 (138 B2.000)		Gasolina	FWD	1301	50	68	01.83-04.85	*
1.3 (138 A3.000)		Gasolina	FWD	1301	55	75	01.81-09.82	*

# LISTA DE APLICACIONES - BUYERS GUIDE

1.5		Gasolina	FWD	1498	55	75	10.85-05.87	*
1.5 (138 A2.000)		Gasolina	FWD	1498	55	75	01.78-12.88	*
1.5 (138 C2.048)		Gasolina	FWD	1498	55	75	01.78-12.88	*
1.5 (138 C3.048)		Gasolina	FWD	1498	55	75	01.78-12.88	*
1.5 (149 C1.000)		Gasolina	FWD	1498	55	75	01.78-12.88	*
1.5 (149 A5.000)		Gasolina	FWD	1498	58	79	08.85-05.87	*
1.5 (138 B3.000)		Gasolina	FWD	1498	60	82	01.83-12.87	*
1.5 (138 A4.000)		Gasolina	FWD	1498	63	85	01.81-05.87	*
1.6 (138 AR.000)		Gasolina	FWD	1585	66	90	12.85-12.87	*
1.6 (149 A4.000)		Gasolina	FWD	1585	74	100	01.83-12.87	*
1.6 (138 AR.000)		Gasolina	FWD	1585	77	105	05.81-12.87	*
1.6		Gasolina	FWD	1595	66	90	09.85-12.87	*
1.7 Diesel (138 C.000)		Diesel	FWD	1698	44	60	05.85-12.87	*
1.7 Diesel (149 B3.000)		Diesel	FWD	1698	44	60	05.85-12.87	*
1.7 Diesel (138 A5.000)		Diesel	FWD	1714	40	55	10.79-09.82	*
1.7 Diesel		Diesel	RWD	1714	43	58	10.79-10.85	*
1.9 TD (831 D1.000)		Diesel	FWD	1929	59	80	12.85-12.87	*
<b>RITMO Bertone / STRADA (138_) 10.79-07.89</b>					<b>Cabrio (Compact car-C Segment)</b>			
1.3 (138 A1.000)		Gasolina	FWD	1301	48	65	10.79-09.83	*
50 1.3 (138 B2.000)		Gasolina	FWD	1302	50	68	10.85-12.87	*
85 1.5 (138 B3.000)		Gasolina	FWD	1498	60	82	03.83-12.86	*
85 1.5 (138 A4.000)		Gasolina	FWD	1498	63	86	01.80-07.89	*
100 1.6 (138 AR.048)		Gasolina	FWD	1585	74	100	10.85-12.87	*
100 1.6 (138 AR.000)		Gasolina	FWD	1585	77	105	10.85-12.87	*
<b>STRADA (178_, 278_) 02.98-</b>					<b>Pick-up (Pick-Up Truck)</b>			
1.2 (188 A4.000)		Gasolina	FWD	1242	44	60	04.03-	*
1.2 (178 B5.000)		Gasolina	FWD	1242	54	73	06.99-12.06	*
1.2 Trekking (178 B7.045)		Gasolina	FWD	1242	60	82	11.05-	*
1.6 Trekking (178 D2.011)		Gasolina	FWD	1581	76	103	11.05-	*
1.6 Flex		Gasolina	FWD	1598	86	117	09.09-	*
1.3 D Multijet (223 A9.000)		Diesel	FWD	1248	62	85	05.06-	*
1.3 D Multijet (278AYR1A) (199 B1.000)		Diesel	FWD	1248	70	95	10.10-	*
1.7 TD (176 A3.000)		Diesel	FWD	1698	51	69	06.99-12.06	*
1.9 D (223 A6.000)		Diesel	FWD	1910	46	63	12.00-	*
1.9 JTD (188 A2.000)		Diesel	FWD	1910	59	80	04.03-	*
<b>UNO II (146_) 02.88-12.13</b>					<b>[CAMBIADO]:Furgón (LCVs-N1 Segment)</b>			
45 0.9 (146 A.000)		Gasolina	FWD	903	33	45	02.88-07.96	*
45 0.9 (146 A1.000)		Gasolina	FWD	903	33	45	02.88-07.96	*
1.7 D (146 B2.000)		Diesel	FWD	1697	43	58	02.88-02.92	*
1.7 D (149 B4.046)		Diesel	FWD	1697	43	58	02.88-02.92	*
<b>UNO I-IV (146_, 158_) 01.83-12.13</b>					<b>[CAMBIADO]:Fastback (Supermini car-B Segment)</b>			
0.9		Gasolina	FWD	903	30	41	02.84-08.89	*
45 0.9 (146 A.000)		Gasolina	FWD	903	33	45	03.83-09.92	*
45 0.9 (146 A1.000)		Gasolina	FWD	903	33	45	03.83-09.92	*
45 0.9 (146 A.000)		Gasolina	FWD	903	34	46	02.84-12.88	*
1.0		Gasolina	FWD	994	35	48	08.90-06.01	*
55 1.0		Gasolina	FWD	996	41	56	11.93-08.00	*
1.0 (146E) (156 A2.000)		Gasolina	FWD	999	31	42	06.89-02.92	*
45 1.0 (146A.ED) (156 A2.048)		Gasolina	FWD	999	32	44	06.86-12.93	*

# LISTA DE APLICACIONES - BUYERS GUIDE

45 1.0 (146A.ED) (156 A2.100)		Gasolina	FWD	999	32	44	06.86-12.93	*
45 i.e. 1.0 (146E, 146A) (156 A2.000)		Gasolina	FWD	999	33	45	10.84-10.95	*
45 i.e. 1.0 (146E, 146A) (156 A2.246)		Gasolina	FWD	999	33	45	10.84-10.95	*
1.0 iE (156 A2.246)		Gasolina	FWD	999	34	46	05.98-08.00	*
45 1.0		Gasolina	FWD	999	37	50	06.86-12.93	*
50 1.1 (156 C.046)		Gasolina	FWD	1108	37	50	01.90-12.93	*
1.1 (160 A3.000)		Gasolina	FWD	1108	41	56	04.86-06.06	*
1.1 (146 A4.048)		Gasolina	FWD	1108	43	58	10.88-06.06	*
1.1 (160 A3.000)		Gasolina	FWD	1108	43	58	10.88-06.06	*
50 i.e. 1.1 (146 C3.000)		Gasolina	FWD	1116	36	49	06.92-12.93	*
50 1.1 (146 A4.044)		Gasolina	FWD	1116	37	50	01.86-12.89	*
55 1.1 (138 B.000)		Gasolina	FWD	1116	40	54	01.83-08.89	*
60 1.1 (146A.EG) (146 A4.048)		Gasolina	FWD	1116	43	58	05.85-08.89	*
1.3 Turbo i.e. (146 A2.146)		Gasolina	FWD	1301	73	99	01.87-12.87	*
1.3 Turbo i.e. (146 A2.246)		Gasolina	FWD	1301	74	101	09.89-03.91	*
1.3 Turbo i.e. (146 A2.000)		Gasolina	FWD	1301	77	105	04.85-08.89	*
70 1.3 (149 A7.000)		Gasolina	FWD	1302	48	65	05.85-08.89	*
70 1.3 (138 B2.000)		Gasolina	FWD	1302	50	68	01.83-04.85	*
1.4		Gasolina	FWD	1372	51	69	07.91-07.96	*
70 i.e. 1.4 (160 A1.046)		Gasolina	FWD	1372	51	70	09.89-07.96	*
70 S 1.4 (160 A1.046)		Gasolina	FWD	1372	52	71	10.88-06.06	*
70 S 1.4 (160 A1.048)		Gasolina	FWD	1372	52	71	10.88-06.06	*
70 i.e. 1.4 (146 C1.000)		Gasolina	FWD	1372	53	72	09.89-12.93	*
1.4 Turbo (146 A8.000)		Gasolina	FWD	1372	77	105	10.88-08.00	*
1.4 Turbo i.e. (146 A8.046)		Gasolina	FWD	1372	82	112	09.89-09.93	*
1.4 Turbo i.e. (146 A8.000)		Gasolina	FWD	1372	87	118	12.89-12.96	*
75 i.e. 1.5 (138 C2.048)		Gasolina	FWD	1498	55	75	10.85-12.93	*
75 i.e. 1.5 (149 C1.000)		Gasolina	FWD	1498	55	75	10.85-12.93	*
1.5 75 iE		Gasolina	FWD	1498	56	76	01.94-10.95	*
1.6 (159 A3.046)		Gasolina	FWD	1581	65	88	12.89-04.93	*
1.6 R (159 A3.048)		Gasolina	FWD	1581	66	90	05.93-12.95	*
1.3 Super Diesel (127 A5.000)		Diesel	FWD	1302	33	45	06.83-03.92	*
1.3 Super Diesel (146 B1.000)		Diesel	FWD	1302	33	45	06.83-03.92	*
70 TD 1.4 (146 B.000)		Diesel	FWD	1367	52	71	10.86-10.90	*
70 TD 1.4 (146 B3.000)		Diesel	FWD	1367	52	71	10.86-10.90	*
1.7 D (146 B2.000)		Diesel	FWD	1697	43	58	11.94-08.00	*
1.9 D		Diesel	FWD	1929	58	79	01.89-12.91	*
<b>X-1/9 (128_) 11.72-12.89</b>					<b>Targa (Sports car-S Segment)</b>			
1.3 (128 AS.000)		Gasolina	RWD	1290	54	73	10.75-06.78	*
1.3 (128 AS.000)		Gasolina	RWD	1290	55	75	05.73-12.79	*
1.5 (128AS1_) (138 A4.000)		Gasolina	RWD	1498	63	85	11.78-12.89	*
1.5 (128AS1_) (138 AS.000)		Gasolina	RWD	1498	63	85	11.78-12.89	*
1.5 (138 BS.031)		Gasolina	RWD	1499	56	76	06.85-12.89	*
<b>FORD OTOSAN</b>								
<b>ANADOL 01.67-12.82</b>					<b>Sedán (Compact car-C Segment)</b>			
1.3		Gasolina	RWD	1298	40	54	01.67-12.82	*
1.6		Gasolina	RWD	1599	48	65	01.67-12.82	*
<b>ANADOL Estate 01.67-12.82</b>					<b>[CAMBIADO]:Break (Compact car-C Segment)</b>			
1.6		Gasolina	RWD	1599	48	65	01.67-12.82	*
<b>FSO</b>								



# LISTA DE APLICACIONES - BUYERS GUIDE

125P 10.67-08.92					[CAMBIADO]:Break (Large family car-D Segment)			
1.3 (116 C 076)	Gasolina	RWD	1295	47	64	10.67-08.92	*	
1.5 (115 C 076)	Gasolina	RWD	1481	55	75	10.67-08.92	*	
125P 06.75-05.91					Pick-up (LCVs-N1 Segment)			
1.5 (115 C 076)	Gasolina	RWD	1481	60	82	06.75-12.89	* *	
125P 10.67-08.92					Sedán (Large family car-D Segment)			
1.3 1300 (116 C 076)	Gasolina	RWD	1295	47	64	10.67-08.92	*	
1.5 1500 (115 C 076)	Gasolina	RWD	1481	55	75	10.67-08.92	*	
126P 07.72-09.00					[CAMBIADO]:Fastback (Large family car-D Segment)			
0.6	Gasolina	RWD	594	17	23	09.72-07.77	*	
650 (126 A1.048)	Gasolina	RWD	652	18	24	07.81-09.00	*	
0.6 (126 A1.048)	Gasolina	RWD	652	22	30	07.77-12.91	*	
127P 10.69-10.76					[CAMBIADO]:Fastback (Supermini car-B Segment)			
0.9 (100 GL.000)	Gasolina	FWD	903	33	45	10.69-10.76	*	
132P 01.74-09.78					Sedán (Large family car-D Segment)			
1.6 (132 AB.0A.0)	Gasolina	RWD	1592	72	98	01.74-09.78	*	
1.8 (132 A1.000)	Gasolina	RWD	1756	79	107	07.75-09.78	*	
1500 06.81-12.91					[CAMBIADO]:Break (Large family car-D Segment)			
1.5 (115 C 076)	Gasolina	RWD	1481	60	82	06.81-12.91	* *	
1500 06.81-12.91					Sedán (Large family car-D Segment)			
1.5 (115 C 076)	Gasolina	RWD	1481	60	82	06.81-12.91	* *	
POLONEZ 10.77-12.91					[CAMBIADO]:Fastback (Compact car-C Segment)			
1.3 (116 C 076)	Gasolina	RWD	1295	48	65	01.78-12.80	*	
1.5 (AA)	Gasolina	RWD	1481	55	75	10.77-08.88	*	
1.5 (115 C.074)	Gasolina	RWD	1481	60	82	01.78-08.88	*	
1.5 Turbo (115 C 082)	Gasolina	RWD	1481	70	95	01.78-12.91	*	
1.6 (CB)	Gasolina	RWD	1598	64	87	08.86-08.88	*	
POLONEZ II / PRIMA 07.83-10.95					[CAMBIADO]:Break (Compact car-C Segment)			
1.5	Gasolina	RWD	1481	59	80	07.83-07.88	* *	
1.6	Gasolina	RWD	1598	64	87	08.88-10.95	* *	
1.9 D	Diesel	RWD	1905	51	69	04.85-10.95	* *	
POLONEZ II / PRIMA 08.88-08.92					[CAMBIADO]:Fastback (Compact car-C Segment)			
1.5 (AA)	Gasolina	RWD	1481	55	75	08.88-08.92	*	
1.5 i (115 C.074)	Gasolina	RWD	1481	55	75	08.88-08.92	*	
1.6 (CB)	Gasolina	RWD	1598	64	87	08.88-08.92	*	
1.9 D (XUD 9A)	Diesel	RWD	1905	51	69	08.88-08.92	*	
POLONEZ III / ATOU 04.94-09.98					Pick-up (Compact car-C Segment)			
1.4 i 16V (14K4F)	Gasolina	RWD	1396	76	103	04.94-09.98	* *	
1.4 i 16V (ROVER K16 DOHC)	Gasolina	RWD	1396	76	103	04.94-09.98	* *	
1.6 i (147CK46)	Gasolina	RWD	1598	57	78	04.94-09.98	* *	
1.9 D (XUD 9A)	Diesel	RWD	1905	51	69	04.94-09.98	* *	
POLONEZ III / ATOU 09.92-03.02					Sedán (Compact car-C Segment)			
1.4 i 16V	Gasolina	RWD	1398	76	103	09.92-03.02	*	
1.6 i (147CK46)	Gasolina	RWD	1598	57	78	09.92-03.02	*	
1.6 GLI	Gasolina	FWD	1598	59	80	03.96-03.02	* *	

# LISTA DE APLICACIONES - BUYERS GUIDE

POLONEZ III / CARO 09.92-01.05					[CAMBIADO]:Fastback (Compact car-C Segment)			
1.4 i 16V (ROVER K16 DOHC)	Gasolina	RWD	1398	76	103	09.92-03.02	*	
1.5 (AA)	Gasolina	RWD	1481	55	75	05.94-12.97	*	
1.6 i (147CK46)	Gasolina	RWD	1598	57	78	09.92-03.02	*	
1.8	Gasolina	FWD	1796	81	110	02.03-01.05	*	
1.9 D (XUD 9A)	Diesel	RWD	1905	51	69	09.92-03.02	*	
INNOCENTI								
KORAL 01.90-12.92				[CAMBIADO]:Fastback (Supermini car-B Segment)				
45 (100 GL 064)	Gasolina	FWD	903	33	45	01.90-12.92	*	
55 (146 A6.000)	Gasolina	FWD	1116	40	55	01.90-12.92	*	
LANCIA								
A 112 03.78-12.86				[CAMBIADO]:Fastback (Supermini car-B Segment)				
0.9 Junior (A112B/2) (A112 A.000)	Gasolina	FWD	903	29	40	03.81-06.86	*	
0.9 Junior (A112B/2) (A112 A5.000)	Gasolina	FWD	903	29	40	03.81-06.86	*	
0.9 Junior (A112B/2) (A112 B2.000)	Gasolina	FWD	903	29	40	03.81-06.86	*	
1.0 LX (A112) (A112 B1.000)	Gasolina	FWD	965	35	48	03.84-12.86	*	
1.0 Abarth (A112B2/5) (A112 A2.000)	Gasolina	FWD	1050	51	69	03.78-02.84	*	
BETA MONTE CARLO / SCORPION (137_) 09.75-10.83				Targa (Executive car-E Segment)				
2.0 (137AS) (828 B1.000)	Gasolina	RWD	1995	90	122	06.81-10.83	*	
DELTA (831_) 09.79-01.94				[CAMBIADO]:Fastback (Compact car-C Segment)				
1.1 (831AB.015) (831 B8.000)	Gasolina	FWD	1116	47	64	01.86-12.90	*	
1.3 (831AB.011) (831 A2.000)	Gasolina	FWD	1301	55	75	09.79-08.92	*	
1.3 (831AB.011) (831 B.000)	Gasolina	FWD	1301	55	75	09.79-08.92	*	
1.3 (831.AB) (831 A2.000)	Gasolina	FWD	1301	58	79	09.83-08.92	*	
1.5 (831AB.025) (831 A1.000)	Gasolina	FWD	1498	63	86	09.79-12.92	*	
1.5 (831AB.025) (831 B1.000)	Gasolina	FWD	1498	63	86	09.79-12.92	*	
1.6 GT i.e. (831AB.010) (149 C2.000)	Gasolina	FWD	1585	66	90	05.87-08.92	*	
1.6 GT (831AB.06) (831 A4.000)	Gasolina	FWD	1585	77	105	11.82-04.86	*	
1.6 GT i.e. (831AB.016) (831 B7.000)	Gasolina	FWD	1585	80	109	08.86-08.88	*	
1.6 HF Turbo (831AB.0) (831 A7.000)	Gasolina	FWD	1585	96	131	10.83-12.86	*	
1.6 HF Turbo (831AB.020S) (831 B7.046)	Gasolina	FWD	1585	97	132	04.87-03.89	*	
1.6 HF Turbo (831AB.020S) (831 B3.000)	Gasolina	FWD	1585	103	140	08.86-08.88	*	
1.6 HF Turbo	Gasolina	FWD	1585	122	166	08.86-05.93	*	
2.0 HF Integrale (831AB.024S, 831AB.028) (831 B5.000)	Gasolina	4WD	1995	122	166	11.86-08.88	*	
2.0 HF Integrale (831AB.024S, 831AB.028) (831 C5.046)	Gasolina	4WD	1995	130	177	12.86-12.92	*	
2.0 HF Integrale (831AB.024S, 831AB.028) (831 C5.000)	Gasolina	4WD	1995	133	181	10.87-12.91	*	
2.0 16V HF Integrale (831AB.026) (831 D5.000)	Gasolina	4WD	1995	144	196	03.89-09.91	*	
1.9 Turbo DS (831AB.021) (831 D1.000)	Diesel	FWD	1929	59	80	10.86-12.89	*	
PRISMA (831_) 01.83-02.92				Sedán (Executive car-E Segment)				
1.3 (831AB) (831 A2.000)	Gasolina	FWD	1301	58	79	01.83-12.89	*	
1.5 (831AB) (138 C2.048)	Gasolina	FWD	1498	55	75	09.85-02.92	*	
1.5 (831AB) (831 B1.048)	Gasolina	FWD	1498	55	75	09.85-02.92	*	
1.5 (831AB) (831 B1.000)	Gasolina	FWD	1498	59	80	05.86-07.89	*	
1.5 (831AB) (831 A1.000)	Gasolina	FWD	1498	63	86	01.83-04.86	*	
1.6 i.e. Super (831AB) (149 C2.000)	Gasolina	FWD	1585	66	90	05.87-12.89	*	
1.6 (831AB) (831 B6.000)	Gasolina	FWD	1585	71	97	08.87-08.88	*	
1.6 (831AB) (831 B6.000)	Gasolina	FWD	1585	73	99	08.86-02.92	*	

# LISTA DE APLICACIONES - BUYERS GUIDE

1.6 (831AB) (831 A4.000)		Gasolina	FWD	1585	77	105	01.83-04.86	*
1.6 i.e. (831AB) (831 B7.000)		Gasolina	FWD	1585	80	109	05.86-12.89	*
2.0 i.e. A las 4 ruedas (831AB) (831 B4.000)		Gasolina	4WD	1995	85	115	04.86-12.89	*
1.9 Diesel (831AB) (831 D.000)		Diesel	FWD	1911	48	65	01.83-02.92	*
<b>Y10 (156_) 03.85-12.95</b>					<b>[CAMBIADO]:Fastback (City car-A Segment)</b>			
1.0 Fire (156B, 156AD) (156 A2.100)		Gasolina	FWD	999	32	44	06.85-06.91	*
1.0 Fire (156AA) (156 A2.000)		Gasolina	FWD	999	33	45	03.85-06.89	*
1.0 Fire Catalytic-Conv (156AE) (156 A2.246)		Gasolina	FWD	999	33	45	10.87-02.92	*
1.0 Fire (156AA, 156AD) (156 A2.000)		Gasolina	FWD	999	37	50	03.85-02.90	*
1.0 (156C) (156 A.000)		Gasolina	FWD	1049	41	56	03.85-07.89	*
1.1 i.e. Fire (156AG) (156 C.046)		Gasolina	FWD	1108	37	50	07.89-09.95	*
1.1 i.e. Fire A las 4 ruedas (156AG) (156 C.046)		Gasolina	4WD	1108	37	50	09.92-12.95	*
<b>PININFARINA</b>								
<b>SPIDEREUROPA (P124DS) 03.82-11.85</b>					<b>Cabrío (Large family car-D Segment)</b>			
2000 (132 C3.031)		Gasolina	RWD	1995	76	103	11.84-11.85	*
2000 (132 C3.031)		Gasolina	RWD	1995	77	105	03.82-09.85	*
2000 Volumex (232R14)		Gasolina	RWD	1995	99	135	06.83-11.85	*
<b>SAAB</b>								
<b>600 01.80-12.86</b>					<b>[CAMBIADO]:Fastback (Compact car-C Segment)</b>			
1.3 (831 A2.000)		Gasolina	FWD	1301	55	75	01.80-12.86	*
1.5 (831 A1.000)		Gasolina	FWD	1498	63	86	01.80-12.86	*
<b>SEAT</b>								
<b>124 (124A) 01.70-12.76</b>					<b>[CAMBIADO]:Break (Large family car-D Segment)</b>			
D1200 (124 A.000)		Gasolina	RWD	1197	44	60	01.70-12.74	* *
LS1200 (124 A.000)		Gasolina	RWD	1197	48	65	01.70-12.76	* *
<b>124 01.68-10.80</b>					<b>Sedán (Large family car-D Segment)</b>			
D1200 (124 A.000)		Gasolina	RWD	1197	44	60	01.68-12.76	* *
LS1200 (FA12)		Gasolina	RWD	1197	48	65	01.68-10.80	* *
1430 (FA14)		Gasolina	RWD	1438	55	75	01.70-12.76	* *
1.6 (FC16)		Gasolina	RWD	1585	70	95	09.76-10.80	* *
1430 Especial (124 A9.000)		Gasolina	RWD	1592	70	95	01.70-12.76	* *
1.6 (FA16)		Gasolina	RWD	1608	72	98	09.75-08.76	* *
1.8 (FA18)		Gasolina	RWD	1756	87	118	09.75-10.80	* *
2.0 (FA19)		Gasolina	RWD	1995	85	116	04.79-10.80	* *
<b>127 (127A) 04.72-12.82</b>					<b>[CAMBIADO]:Fastback (Supermini car-B Segment)</b>			
0.9 (A112 A5.000)		Gasolina	FWD	903	33	45	04.72-12.82	*
1.0 (110F00)		Gasolina	FWD	1010	38	52	04.72-12.82	*
<b>128 (128A) 01.76-12.80</b>					<b>Sedán (Supermini car-B Segment)</b>			
1.2 (124 A.000)		Gasolina	FWD	1197	49	67	01.76-12.80	*
1.4 (124 B2.000)		Gasolina	FWD	1438	57	78	01.76-12.80	*
<b>131 (131A) 05.75-12.86</b>					<b>Sedán (Compact car-C Segment)</b>			
1.6 (132 BB OA O)		Gasolina	RWD	1592	71	97	03.82-01.85	*
2.0 (131 C4.000)		Gasolina	RWD	1994	85	116	06.78-12.85	*
2.4 Diesel (8144.61)		Diesel	RWD	2445	53	72	06.78-12.86	*
<b>133 (133A) 05.74-11.79</b>					<b>[CAMBIADO]:Fastback (City car-A Segment)</b>			
0.8 (DG)		Gasolina	RWD	837	25	34	05.74-11.79	*

# LISTA DE APLICACIONES - BUYERS GUIDE

FURA (25A) 01.82-12.86					[CAMBIADO]:Fastback (Supermini car-B Segment)			
0.9 (09 NCA)		Gasolina	FWD	903	29	40	03.84-12.86	*
0.9 (100 GL 7000)		Gasolina	FWD	903	29	40	03.84-12.86	*
0.9 (HB 90)		Gasolina	FWD	903	31	43	01.82-06.86	*
0.9 (100 GL 3000)		Gasolina	FWD	903	33	45	01.82-06.86	*
1.4 Crono (127 B.7000)		Gasolina	FWD	1438	55	75	01.82-06.86	*
IBIZA (21A) 06.84-12.93					[CAMBIADO]:Fastback (Supermini car-B Segment)			
0.9 (09 NCA)		Gasolina	FWD	903	29	40	08.90-05.93	*
0.9 (146 A 000)		Gasolina	FWD	903	29	40	08.90-05.93	*
0.9 (146 A 000)		Gasolina	FWD	903	32	44	08.86-05.93	*
1.2 (021 A 1000)		Gasolina	FWD	1193	44	60	11.84-12.93	*
1.2 (021 A 1000)		Gasolina	FWD	1193	46	63	11.84-12.93	*
1.2 i (021 C.1000)		Gasolina	FWD	1193	52	71	01.89-05.93	*
1.5 (021 A 2000)		Gasolina	FWD	1461	63	85	11.84-05.93	*
1.5		Gasolina	FWD	1461	64	87	10.86-05.93	*
1.5 i (021 D.2000)		Gasolina	FWD	1461	65	89	10.86-05.93	*
1.5 i Cat (021 C.2000)		Gasolina	FWD	1461	66	90	10.86-05.93	*
1.5 i (021 B.2000)		Gasolina	FWD	1461	74	100	10.86-05.93	*
1.7 (021 A.3000)		Gasolina	FWD	1675	72	98	01.91-05.93	*
1.7		Gasolina	FWD	1675	76	103	01.91-05.93	*
1.7 D (022 A.5000)		Diesel	FWD	1714	40	54	06.84-05.93	*
1.7 D (022 A.5000)		Diesel	FWD	1714	42	57	08.90-05.93	*
MALAGA (23A) 11.84-12.93					Sedán (Compact car-C Segment)			
1.2 (021 A 1000)		Gasolina	FWD	1193	44	60	05.85-12.93	*
1.2 (021 A 1000)		Gasolina	FWD	1193	47	64	11.84-12.93	*
1.2 i (021 C.1000)		Gasolina	FWD	1193	52	71	12.89-12.93	*
1.5 (021 A 2000)		Gasolina	FWD	1461	63	85	05.85-12.93	*
1.5 i Cat (021 A 2000)		Gasolina	FWD	1461	66	90	10.86-12.93	*
1.5 i Cat (021 C.2000)		Gasolina	FWD	1461	66	90	10.86-12.93	*
1.5 i Cat (021 D.2000)		Gasolina	FWD	1461	66	90	10.86-12.93	*
1.5 i (021 B.2000)		Gasolina	FWD	1461	74	100	01.87-12.93	*
1.7 D (022 A.5000)		Diesel	FWD	1714	40	54	05.85-12.93	*
1.7 D (022 A.5000)		Diesel	FWD	1714	42	57	05.90-12.93	*
MARBELLA (28A) 08.86-05.99					[CAMBIADO]:Fastback (City car-A Segment)			
0.8 (08 NCA)		Gasolina	FWD	843	25	34	08.86-12.93	*
0.9 Cat (08 NCB)		Gasolina	FWD	899	30	41	11.96-10.98	*
0.9 (08 NCB)		Gasolina	FWD	899	32	44	07.97-10.98	*
0.9 (09 NCA)		Gasolina	FWD	903	29	40	01.87-12.93	*
0.9 (100 GL 7000)		Gasolina	FWD	903	29	40	01.87-12.93	*
0.9 Cat (09 NCB)		Gasolina	FWD	903	29	40	01.90-11.96	*
0.9 Cat (100 GL 7000)		Gasolina	FWD	903	29	40	01.90-11.96	*
MARBELLA (028A) 11.86-05.99					Furgón/hatchback (LCVs-N1 Segment)			
0.8 (08 NCA)		Gasolina	FWD	843	25	34	01.87-12.93	*
0.9		Gasolina	FWD	899	30	41	05.95-05.99	*
0.9 (09 NCA)		Gasolina	FWD	903	29	40	01.87-12.93	*
0.9 Cat (09 NCB)		Gasolina	FWD	903	29	40	01.87-12.93	*
PANDA (141A) 10.80-12.86					[CAMBIADO]:Fastback (City car-A Segment)			
0.9 (100 GL 3000)		Gasolina	FWD	903	31	42	10.80-12.86	*

# LISTA DE APLICACIONES - BUYERS GUIDE

RITMO (138) 07.78-09.83					[CAMBIADO]:Fastback (Compact car-C Segment)			
1.2 (12AC)		Gasolina	FWD	1197	47	64	07.78-09.83	*
1.4 (15G)		Gasolina	FWD	1438	57	78	07.78-09.83	*
1.7 D (022 A.5000)		Diesel	FWD	1714	41	56	10.79-09.83	*
RONDA (22A) 06.82-11.88					[CAMBIADO]:Fastback (Compact car-C Segment)			
1.2 (021 A 1000)		Gasolina	FWD	1193	44	60	10.84-12.86	*
1.2 (124 B6.000)		Gasolina	FWD	1197	47	64	08.83-05.85	*
1.4 (124 B7.000)		Gasolina	FWD	1438	54	73	06.82-11.88	*
1.5 (021 A 2000)		Gasolina	FWD	1461	63	85	09.84-12.86	*
1.6 (022 A 000)		Gasolina	FWD	1592	68	92	08.83-09.85	*
1.6 (138 AR6.000)		Gasolina	FWD	1592	68	92	08.83-09.85	*
1.7 Diesel (022 A.5000)		Diesel	FWD	1714	40	54	06.82-12.86	*
1.7 Diesel (022 A.5000)		Diesel	FWD	1714	41	56	06.82-12.86	*
TERRA (24) 01.87-12.96					[CAMBIADO]:Break (City car-A Segment)			
0.9 (09 NCA)		Gasolina	FWD	903	29	40	02.87-12.96	*
0.9 Cat (09 NCB)		Gasolina	FWD	903	29	40	02.92-12.94	*
1.3 D (MN)		Diesel	FWD	1272	33	45	03.90-12.94	*
1.4 D (1 W)		Diesel	FWD	1398	35	48	10.90-12.95	*
TERRA (024A) 01.87-02.96					[CAMBIADO]:Furgón/Break (City car-A Segment)			
0.9 (09 NCA)		Gasolina	FWD	903	29	40	01.87-12.95	*
0.9 Cat (09 NCB)		Gasolina	FWD	903	29	40	01.90-12.95	*
1.3 D (MN)		Diesel	FWD	1272	33	45	03.90-02.92	*
1.4 D (1 W)		Diesel	FWD	1398	35	48	10.90-02.92	*
TOFAS								
DOGAN 01.76-12.02					Sedán (Compact car-C Segment)			
1.6 (159 A3.048)		Gasolina	RWD	1581	59	80	01.76-12.01	*
1.6 i.e		Gasolina	RWD	1581	61	83	01.99-12.02	*
1.6 IE		Gasolina	RWD	1581	66	90	01.97-07.02	*
KARTAL 10.85-12.02					[CAMBIADO]:Break (Compact car-C Segment)			
1.6		Gasolina	RWD	1581	55	75	01.91-09.96	*
1.6 IE		Gasolina	RWD	1581	66	90	01.97-07.02	*
1.6 (131 A1.000)		Gasolina	RWD	1585	55	75	10.85-09.96	*
SAHIN 01.80-12.03					Sedán (Compact car-C Segment)			
1.4 Mirafiori		Gasolina	RWD	1367	51	69	01.80-12.03	*
1.6 S (159 A3.048)		Gasolina	RWD	1581	59	80	01.80-12.03	*
1.6 IE		Gasolina	RWD	1581	63	86	01.97-07.02	*
1.6 (131 A1.000)		Gasolina	RWD	1585	55	75	10.85-09.96	*
SERCE 10.85-10.94					Sedán ()			
1.3		Gasolina	RWD	1297	48	65	10.85-10.94	*
YUGO								
311 04.83-04.91					[CAMBIADO]:Fastback ()			
1.1 (128A4)		Gasolina	FWD	1116	41	56	04.83-04.91	*
313 04.83-04.91					[CAMBIADO]:Fastback (Compact car-C Segment)			
1.3 (16A6046)		Gasolina	FWD	1301	49	67	04.83-07.88	*
411 04.83-04.91					Sedán ()			
1.1 (128A4)		Gasolina	FWD	1116	41	56	04.83-12.84	*

# LISTA DE APLICACIONES - BUYERS GUIDE

<b>413 04.83-04.91</b>					<b>Sedán (Compact car-C Segment)</b>			
1.3		Gasolina	FWD	1301	47	64	09.83-12.84	*
<b>45-65 03.83-12.91</b>					<b>[CAMBIADO]:Fastback (Supermini car-B Segment)</b>			
0.9 (164A0)		Gasolina	FWD	903	34	46	03.83-12.91	*
1.1 (11A)		Gasolina	FWD	1116	41	56	03.83-12.91	*
1.1 (128A4)		Gasolina	FWD	1116	41	56	03.83-12.91	*
<b>45-65 06.85-12.91</b>					<b>Furgón/hatchback (Supermini car-B Segment)</b>			
0.9		Gasolina	FWD	903	33	45	04.88-12.89	*
1.1		Gasolina	FWD	1116	41	56	03.89-07.91	*
<b>511 04.83-04.91</b>					<b>[CAMBIADO]:Fastback ()</b>			
1.1 (128A4)		Gasolina	FWD	1116	41	56	04.83-04.91	*
<b>513 04.83-04.91</b>					<b>[CAMBIADO]:Fastback (Compact car-C Segment)</b>			
1.3 (146A6)		Gasolina	FWD	1298	49	67	07.88-06.90	*
1.3		Gasolina	FWD	1301	47	64	09.83-07.88	*
<b>FLORIDA (VX65) 10.88-11.08</b>					<b>[CAMBIADO]:Fastback ()</b>			
1.1 (138 B.0000)		Gasolina	FWD	1116	44	60	08.89-11.08	*
1.3 (103 A) (13 E.3.064)		Gasolina	FWD	1302	50	68	03.91-11.08	*
1.4 (160 A1.000)		Gasolina	FWD	1372	51	69	10.91-06.95	*
1.4 Cat (160 A1.000)		Gasolina	FWD	1372	52	71	10.88-11.08	*
1.6 (149 A.000)		Gasolina	FWD	1585	62	84	08.89-06.95	*
<b>SANA 10.89-10.93</b>					<b>[CAMBIADO]:Fastback (Compact car-C Segment)</b>			
1.4 (14FE)		Gasolina	FWD	1372	52	71	10.89-10.93	*
<b>TEMPO 06.85-12.93</b>					<b>[CAMBIADO]:Fastback (Compact car-C Segment)</b>			
0.9 (164A0)		Gasolina	FWD	903	33	45	05.91-12.93	*
1.1 (11A)		Gasolina	FWD	1116	41	56	06.85-07.93	*
1.1 (128A4)		Gasolina	FWD	1116	41	56	06.85-07.93	*
1.3 (16A6046)		Gasolina	FWD	1301	49	67	05.91-07.93	*
<b>ZASTAVA</b>								
<b>101 06.72-12.93</b>					<b>[CAMBIADO]:Fastback (Compact car-C Segment)</b>			
1.1 (128 A.000)		Gasolina	FWD	1116	37	50	12.75-01.80	*
1.1 (128 A.000)		Gasolina	FWD	1116	40	55	06.73-01.90	*
1.1 (128 A.064)		Gasolina	FWD	1116	41	56	05.75-12.93	*
1.1 Super (128 AC5.000)		Gasolina	FWD	1116	47	64	07.79-09.81	*
1.3 (128 AR.000)		Gasolina	FWD	1290	48	65	10.81-12.93	*
<b>YUGO 04.80-06.95</b>					<b>[CAMBIADO]:Fastback (Compact car-C Segment)</b>			
0.9 (9A)		Gasolina	FWD	903	33	45	04.80-06.92	*
55 (128 A.000)		Gasolina	FWD	1116	40	54	04.80-06.95	*
60 EFI (145 A) (100 GL. 0.64)		Gasolina	FWD	1116	44	60	08.91-06.95	*
60 EFI (145 A) (11 E 1.064)		Gasolina	FWD	1116	44	60	08.91-06.95	*
65 EFI (145 A) (13 E 1.064)		Gasolina	FWD	1302	48	65	07.81-06.95	*