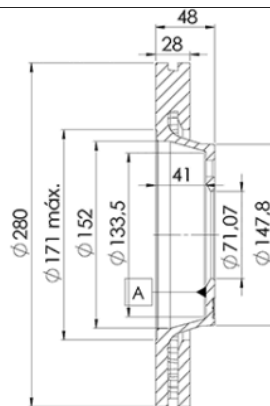
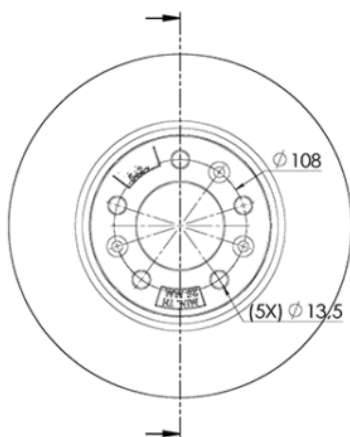


78RBD25624



Weight: 15.644

O.E.M.	MAKE
4249.20	PEUGEOT
4249.21	CITROËN
4249.87	PEUGEOT
4249.J9	CITROËN
9 404 249 878	FIAT
9 467 548 387	FIAT
SU001-A1063	TOYOTA



78RBD25624



Ø280x28x48

Sin Filas



Trac.	CC	Kw	CV
-------	----	----	----



Front / Rear

CITROËN

JUMPY II / DISPATCH 01.07-					[CAMBIADO]:Furgón (LCVs-N1 Segment)			
1.6 HDi 90 16V (9HU (DV6UTED4))	Diesel	FWD	1560	66	90	01.07-03.16	*	
1.6 HDi 90 8V (9HH (DV6DUM))	Diesel	FWD	1560	66	90	01.07-03.16	*	
1.6 HDi 90 8V (9HM (DV6UC))	Diesel	FWD	1560	66	90	01.07-03.16	*	
JUMPY II / DISPATCH (VF7) 01.07-					Bus (Minibus-M2-Segment)			
1.6 HDi 90 16V (9HU (DV6UTED4))	Diesel	FWD	1560	66	90	01.07-03.16	*	
1.6 HDi 90 8V (9HH (DV6DUM))	Diesel	FWD	1560	66	90	01.07-03.16	*	
1.6 HDi 90 8V (9HM (DV6UC))	Diesel	FWD	1560	66	90	01.07-03.16	*	

FIAT

SCUDO II (270_, 272_) 01.07-					[CAMBIADO]:Furgón (LCVs-N1 Segment)			
1.6 D Multijet (9HU)	Diesel	FWD	1560	66	90	01.07-03.16	*	
SCUDO II (270_, 272_) 01.07-					Bus (Minibus-M2-Segment)			
1.6 D Multijet (9HU)	Diesel	FWD	1560	66	90	01.07-03.16	*	
SCUDO II (270_, 272_) 01.07-					Caja/Chasis (LCVs-N1 Segment)			
1.6 D Multijet (9HU)	Diesel	FWD	1560	66	90	01.07-03.16	*	

PEUGEOT

EXPERT II (VF3A_, VF3U_, VF3X_) 01.07-					[CAMBIADO]:Furgón (LCVs-N1 Segment)			
1.6 HDi 90 16V (9HU (DV6UTED4))	Diesel	FWD	1560	66	90	01.07-	*	
1.6 HDi 90 8V (9HH (DV6DUM))	Diesel	FWD	1560	66	90	01.07-	*	
1.6 HDi 90 8V (9HM (DV6UC))	Diesel	FWD	1560	66	90	01.07-	*	

LISTA DE APLICACIONES - BUYERS GUIDE

EXPERT II 01.07-					Caja/Chasis (LCVs-N1 Segment)			
2.0 16V (X_RFH)	Gasolina	FWD	1997	103	140	01.07-03.16	*	
1.6 HDi 90 16V (9HU (DV6UTED4))	Diesel	FWD	1560	66	90	01.07-	*	
EXPERT II Tepee (VF3X_) 01.07-					Bus (Minibus-M2-Segment)			
1.6 HDi 90 16V (9HU (DV6UTED4))	Diesel	FWD	1560	66	90	01.07-03.16	*	
1.6 HDi 90 8V (9HH (DV6DUM))	Diesel	FWD	1560	66	90	01.07-03.16	*	
1.6 HDi 90 8V (9HM (DV6UC))	Diesel	FWD	1560	66	90	01.07-03.16	*	
TOYOTA								
PROACE (MDX_) 06.13-03.16					[CAMBIADO]:Furgón (LCVs-N1 Segment)			
1.6 D (MDX9) (3WZ-TV)	Diesel	FWD	1560	66	90	06.13-03.16	*	
2.0 D (MDX3) (4WZ-FTW)	Diesel	FWD	1997	94	128	06.13-03.16	*	
2.0 D (MDX6) (4WZ-FHV)	Diesel	FWD	1997	120	163	06.13-03.16	*	