

LISTA DE APLICACIONES - BUYERS GUIDE

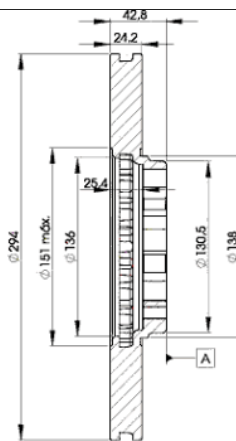
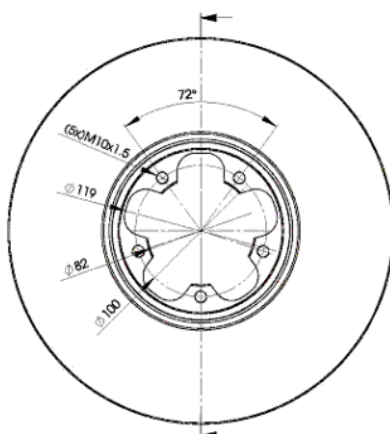
78RBD25613



8 424073 155580

Weight: 14.120

O.E.M.	MAKE
1 387 781	FORD
4 041 428	FORD
YC1W-1125-BA	FORD



78RBD25613

E1 90R-02C0452/0080



Ø294x24x43

Sin Filas



Trac.	CC	Kw	CV		
					Front / Rear

FORD

TRANSIT IV (FA_ _) 01.00-05.06

[CAMBIADO]:Furgón (LCVs-N1 Segment)

2.3 16V RWD (FAA_, FAB_, FAC_) (E5FA)	Gasolina	RWD	2295	107	146	04.01-05.06	*
2.3 16V RWD (FAA_, FAB_, FAC_) (E5FC)	Gasolina	RWD	2295	107	146	04.01-05.06	*
2.3 BiFuel (E5FC)	Gasol./G as (LPG)	RWD	2295	105	143	03.01-03.06	*
2.4 DI RWD (FAA_, FAB_, FAC_, FAD_) (F4FA)	Diesel	RWD	2402	55	75	01.00-05.06	*
2.4 DI (FAA_, FAB_, FAC_, FAD_) (D2FA)	Diesel	RWD	2402	66	90	01.00-05.06	*
2.4 DI (FAA_, FAB_, FAC_, FAD_) (D2FB)	Diesel	RWD	2402	66	90	01.00-05.06	*
2.4 TDE (FXFA)	Diesel	RWD	2402	85	115	03.04-05.06	*
2.4 DI RWD (FAA_, FAB_, FAC_, FAD_) (D4FA)	Diesel	RWD	2402	88	120	01.00-05.06	*
2.4 TDE (DOFA)	Diesel	RWD	2402	92	125	07.01-05.06	*
2.4 TDCi (H9FA)	Diesel	RWD	2402	101	137	03.04-05.06	*

TRANSIT IV (FD_ _, FB_ _, FS_ _, FZ_ _, FC_ _) 01.00-05.06

Bus (Minibus-M2-Segment)

2.3 16V RWD (F_B_, F_C_, F_A_) (E5FA)	Gasolina	RWD	2295	107	146	08.00-05.06	*
2.3 16V RWD (F_B_, F_C_, F_A_) (E5FC)	Gasolina	RWD	2295	107	146	08.00-05.06	*
2.4 DI RWD (F_B_, F_C_) (F4FA)	Diesel	RWD	2402	55	75	01.00-05.06	*
2.4 DI (F_B_, F_C_, F_A_) (D2FA)	Diesel	RWD	2402	66	90	01.00-05.06	*
2.4 DI (F_B_, F_C_, F_A_) (D2FB)	Diesel	RWD	2402	66	90	01.00-05.06	*
2.4 TDE (FXFA)	Diesel	RWD	2402	85	115	03.04-05.06	*
2.4 DI RWD (F_B_, F_C_, F_A_) (D4FA)	Diesel	RWD	2402	88	120	01.00-05.06	*
2.4 TDE (F_C_, F_B_, F_A_) (DOFA)	Diesel	RWD	2402	92	125	07.01-05.06	*
2.4 TDCi (H9FA)	Diesel	RWD	2402	101	137	03.04-05.06	*

TRANSIT IV (FM_ _, FN_ _) 01.00-05.06

Caja/Chasis (LCVs-N1 Segment)

2.3	Gasolina	RWD	2295	105	143	03.01-03.06	*
-----	----------	-----	------	-----	-----	-------------	---

LISTA DE APLICACIONES - BUYERS GUIDE

2.3 16V (F_A_, F_B_, F_C_, F_D_) (E5FA)	Gasolina	RWD	2295	107	146	04.01-05.06	*
2.3 16V (F_A_, F_B_, F_C_, F_D_) (E5FC)	Gasolina	RWD	2295	107	146	04.01-05.06	*
2.3 BiFuel	Gasol./Gas (LPG)	RWD	2295	105	143	03.01-03.06	*
2.4 DI (F_A_, F_B_, F_C_, F_D_) (F4FA)	Diesel	RWD	2402	55	75	01.00-05.06	*
2.4 DI (F_A_, F_B_, F_C_, F_D_) (D2FA)	Diesel	RWD	2402	66	90	01.00-05.06	*
2.4 DI (F_A_, F_B_, F_C_, F_D_) (D2FB)	Diesel	RWD	2402	66	90	01.00-05.06	*
2.4 DI (F_A_, F_B_, F_C_, F_D_) (D2FE)	Diesel	RWD	2402	66	90	01.00-05.06	*
2.4 TDE (FXFA)	Diesel	RWD	2402	85	115	03.04-05.06	*
2.4 DI (F_A_, F_B_, F_C_, F_D_) (D4FA)	Diesel	RWD	2402	88	120	01.00-05.06	*
2.4 TDE (DOFA)	Diesel	RWD	2402	92	125	07.01-05.06	*
2.4 TDCi (H9FA)	Diesel	RWD	2402	101	137	03.04-05.06	*