

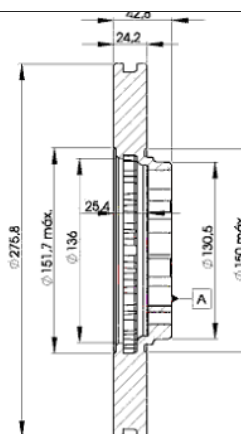
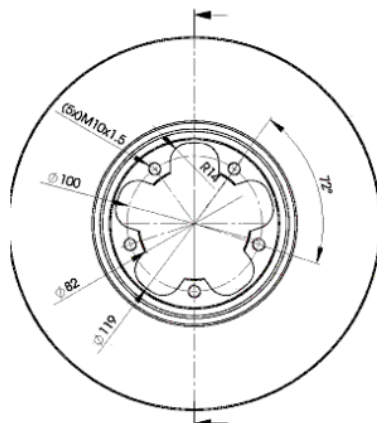
LISTA DE APLICACIONES - BUYERS GUIDE

78RBD25612



Weight: 12.384

O.E.M.	MAKE
1C1W-1125-AA	FORD
4 041 427	FORD
4 395 257	FORD



78RBD25612

E1 90R-02C0452/0086



Ø276x24.5x43.2

Sin Filas



Trac.	CC	Kw	CV	
				Front / Rear

FORD

TRANSIT IV (FA_ _) 01.00-05.06

[CAMBIADO]:Furgón (LCVs-N1 Segment)

2.0	Gasolina	FWD	1998	84	114	09.00-03.06	*
2.3 (E5FC)	Gasolina	RWD	2295	105	143	03.01-03.06	*
2.3	Gasolina	RWD	2295	107	145	03.01-03.06	*
2.0 DI (FAE_, FAF_, FAG_) (D3FA)	Diesel	FWD	1998	55	75	08.00-05.06	*
2.0 DI (FAE_, FAF_, FAG_) (F3FA)	Diesel	FWD	1998	63	86	08.00-05.06	*
2.0 DI (FAE_, FAF_, FAG_) (ABFA)	Diesel	FWD	1998	74	100	08.00-05.06	*
2.0 TDCi (FIFA)	Diesel	FWD	1998	92	125	08.02-05.06	*
2.4 TD (F4FA)	Diesel	FWD	2402	55	75	08.00-08.03	*
2.4 TDDi	Diesel	RWD	2402	88	120	08.00-08.03	*
2.4 TDE (DOFA)	Diesel	RWD	2402	92	125	07.01-05.06	*

TRANSIT IV (FD_ _, FB_ _, FS_ _, FZ_ _, FC_ _) 01.00-05.06

Bus (Minibus-M2-Segment)

2.0	Gasolina	FWD	1998	84	114	09.00-03.06	*
2.3	Gasolina	RWD	2295	107	145	08.00-03.06	*
2.0 DI (F_E_, F_F_, F_G_) (D3FA)	Diesel	FWD	1998	55	75	08.00-05.06	*
2.0 DI (F_E_, F_F_, F_G_) (F3FA)	Diesel	FWD	1998	63	86	08.00-05.06	*
2.0 DI (F_E_, F_F_, F_G_) (ABFA)	Diesel	FWD	1998	74	100	08.00-05.06	*
2.0 TDCi (F_F_, F_E_, F_G_) (FIFA)	Diesel	FWD	1998	92	125	08.02-05.06	*
2.4 TD	Diesel	RWD	2402	55	75	08.00-08.03	*
2.4 TDDi	Diesel	FWD	2402	66	90	10.01-03.06	*
2.4 TDDi	Diesel	RWD	2402	88	120	08.00-08.03	*

TRANSIT IV (FM_ _, FN_ _) 01.00-05.06

Caja/Chasis (LCVs-N1 Segment)

2.0 DI (F_E_, F_F_) (D3FA)	Diesel	FWD	1998	55	75	08.00-05.06	*
----------------------------	--------	-----	------	----	----	-------------	---

LISTA DE APLICACIONES - BUYERS GUIDE

2.0 DI (F_E_, F_F_) (F3FA)	Diesel	FWD	1998	63	86	08.00-05.06	*
2.0 DI (F_E_, F_F_) (ABFA)	Diesel	FWD	1998	74	100	08.00-05.06	*
2.0 TDCi (F_E_, F_F_) (FIFA)	Diesel	FWD	1998	92	125	08.02-05.06	*
2.4 TDdi	Diesel	RWD	2402	88	120	08.00-08.03	*
TRANSIT TOURNEO II (FC_ _) 06.00-03.06					Bus (Minibus-M2-Segment)		
2.0 (D3FA)	Diesel	FWD	1998	55	75	06.00-08.03	*
2.0 (ABFA)	Diesel	FWD	1998	74	101	06.00-03.05	*
2.0 (FIFA)	Diesel	FWD	1998	92	125	03.02-03.06	*