

# LISTA DE APLICACIONES - BUYERS GUIDE

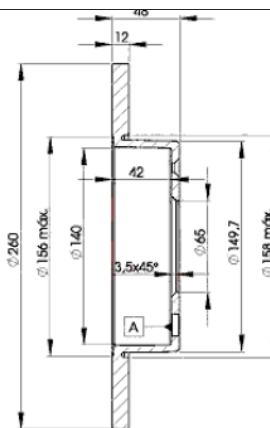
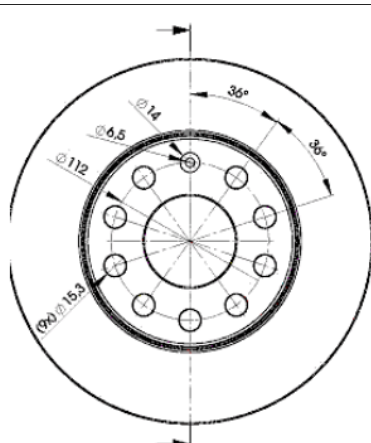
## 78RBD25310



8 424073 155290

Weight: 8.492

O.E.M.	MAKE
1K0 615 601 AC	VW
1K0 615 601 AJ	VW
1K0 615 601 L	VW



## 78RBD25310

E1 90R-02C0415/0025



Ø260x12x48.5

Sin Filas



Trac.	CC	Kw	CV	
				Front / Rear

### AUDI

#### A3 II (8P1) 05.03-12.13

[CAMBIADO]:Fastback (Compact executive car-D Segment)

1.8 T (BPU)	Gasolina	FWD	1781	110	150	08.06-08.12	*
2.0 TDI quattro (AZV)	Diesel	4WD	1968	100	136	05.03-06.08	*
2.0 TDI 16V quattro (BKD)	Diesel	4WD	1968	103	140	08.04-08.12	*
2.0 TDI 16V quattro (CBAB)	Diesel	4WD	1968	103	140	08.04-08.12	*
2.0 TDI 16V quattro (CFFB)	Diesel	4WD	1968	103	140	08.04-08.12	*
2.0 TDI quattro (BMM)	Diesel	4WD	1968	103	140	01.06-06.08	*

#### A3 II Sportback (8PA) 09.04-12.15

[CAMBIADO]:Fastback (Compact executive car-D Segment)

2.0 TDI 16V quattro (BKD)	Diesel	4WD	1968	103	140	11.05-03.13	*
2.0 TDI 16V quattro (CBAB)	Diesel	4WD	1968	103	140	11.05-03.13	*
2.0 TDI 16V quattro (CFFB)	Diesel	4WD	1968	103	140	11.05-03.13	*
2.0 TDI quattro (BMM)	Diesel	4WD	1968	103	140	01.06-06.08	*

### SEAT

#### ALTEA (5P1) 03.04-

MPV (Compact MPV-M1 Segment)

1.4 16V (BXW)	Gasolina	FWD	1390	63	86	05.06-05.11	*
1.4 16V (CGGB)	Gasolina	FWD	1390	63	86	05.06-05.11	*
1.4 TSI (CAXC)	Gasolina	FWD	1390	92	125	11.07-07.15	*

#### ALTEA XL (5P5, 5P8) 10.06-

MPV (Compact MPV-M1 Segment)

1.4 16V (BXW)	Gasolina	FWD	1390	63	86	10.06-06.13	*
1.4 16V (CGGB)	Gasolina	FWD	1390	63	86	10.06-06.13	*
1.4 TSI (CAXC)	Gasolina	FWD	1390	92	125	11.07-07.15	*
1.8 TFSI (BYT)	Gasolina	FWD	1798	118	160	01.07-07.15	*

# LISTA DE APLICACIONES - BUYERS GUIDE

1.8 TFSI (BZB)		Gasolina	FWD	1798	118	160	01.07-07.15	*
1.8 TFSI (CDAA)		Gasolina	FWD	1798	118	160	01.07-07.15	*
2.0 FSI (BVY)		Gasolina	FWD	1984	110	150	10.06-03.09	*
2.0 FSI (BVZ)		Gasolina	FWD	1984	110	150	10.06-03.09	*
2.0 TFSI 4x4 (BWA)		Gasolina	4WD	1984	147	200	06.07-05.09	*
2.0 TFSI		Gasolina	FWD	1984	155	211	05.09-07.15	*
<b>TOLEDO III (5P2) 04.04-05.09</b>					<b>MPV (Large MPV-M1 Segment)</b>			
1.4 TSI (CAXC)		Gasolina	FWD	1390	92	125	11.07-05.09	*
<b>SKODA</b>								
<b>OCTAVIA II / LAURA (1Z3) 02.04-06.13</b>					<b>[CAMBIADO]:Fastback (Compact car-C Segment)</b>			
1.4 (BUD)		Gasolina	FWD	1390	59	80	06.04-04.13	*
1.4 (CGGA)		Gasolina	FWD	1390	59	80	06.04-04.13	*
1.8 T		Gasolina	FWD	1781	110	150	09.05-12.08	*
1.8 TSI (CDAB)		Gasolina	FWD	1798	112	152	03.09-06.13	*
1.8 TSI (BZB)		Gasolina	FWD	1798	118	160	06.07-04.13	*
1.8 TSI (CDAA)		Gasolina	FWD	1798	118	160	06.07-04.13	*
2.0 TDI (AZV)		Diesel	FWD	1968	100	136	02.04-05.10	*
<b>OCTAVIA II Combi (1Z5) 02.04-06.13</b>					<b>[CAMBIADO]:Break (Compact car-C Segment)</b>			
1.4 (BCA)		Gasolina	FWD	1390	55	75	05.04-05.06	*
1.4 (BUD)		Gasolina	FWD	1390	59	80	05.06-06.13	*
1.4 (CGGA)		Gasolina	FWD	1390	59	80	05.06-06.13	*
1.6 (BGU)		Gasolina	FWD	1595	75	102	09.04-06.13	*
1.6 (BSE)		Gasolina	FWD	1595	75	102	09.04-06.13	*
1.6 (BSF)		Gasolina	FWD	1595	75	102	09.04-06.13	*
1.6 (CCSA)		Gasolina	FWD	1595	75	102	09.04-06.13	*
1.6 (CMXA)		Gasolina	FWD	1595	75	102	09.04-06.13	*
1.8 TSI (CDAB)		Gasolina	FWD	1798	112	152	03.09-06.13	*
1.8 TSI 4x4 (CDAB)		Gasolina	4WD	1798	112	152	03.09-02.13	*
1.8 TSI (BZB)		Gasolina	FWD	1798	118	160	06.07-04.13	*
1.8 TSI (CDAA)		Gasolina	FWD	1798	118	160	06.07-04.13	*
2.0 FSI 4x4 (BLX)		Gasolina	4WD	1984	110	150	11.04-04.09	*
2.0 FSI 4x4 (BLY)		Gasolina	4WD	1984	110	150	11.04-04.09	*
2.0 FSI 4x4 (BVX)		Gasolina	4WD	1984	110	150	11.04-04.09	*
1.9 TDI 4x4 (BKC)		Diesel	4WD	1896	77	105	11.04-12.10	*
1.9 TDI 4x4 (BLS)		Diesel	4WD	1896	77	105	11.04-12.10	*
1.9 TDI 4x4 (BXE)		Diesel	4WD	1896	77	105	11.04-12.10	*
2.0 TDI 16V (AZV)		Diesel	FWD	1968	100	136	02.04-05.10	*
2.0 TDI (BMM)		Diesel	FWD	1968	103	140	11.05-05.10	*
2.0 TDI 4x4 (BMM)		Diesel	4WD	1968	103	140	07.06-05.10	*
<b>SUPERB II (3T4) 03.08-05.15</b>					<b>[CAMBIADO]:Fastback (Executive car-E Segment)</b>			
1.4 TSI (CAXC)		Gasolina	FWD	1390	92	125	07.08-05.15	*
1.8 TSI (BZB)		Gasolina	FWD	1798	118	160	03.08-05.15	*
1.8 TSI (CDAA)		Gasolina	FWD	1798	118	160	03.08-05.15	*
1.8 TSI 4x4 (CDAA)		Gasolina	4WD	1798	118	160	11.08-05.15	*
1.9 TDI (BLS)		Diesel	FWD	1896	77	105	03.08-11.10	*
1.9 TDI (BXE)		Diesel	FWD	1896	77	105	03.08-11.10	*
2.0 TDI (BMP)		Diesel	FWD	1968	103	140	03.08-05.10	*
2.0 TDI 16V (BKD)		Diesel	FWD	1968	103	140	01.09-05.15	*
2.0 TDI 16V (CFFB)		Diesel	FWD	1968	103	140	01.09-05.15	*

# LISTA DE APLICACIONES - BUYERS GUIDE

2.0 TDI 16V (CLJA)	Diesel	FWD	1968	103	140	01.09-05.15	*
2.0 TDI (CBBB)	Diesel	FWD	1968	125	170	07.08-05.15	*
2.0 TDI (CFGB)	Diesel	FWD	1968	125	170	07.08-05.15	*
2.0 TDI 4x4 (CBBB)	Diesel	4WD	1968	125	170	09.08-05.15	*
2.0 TDI 4x4 (CFGB)	Diesel	4WD	1968	125	170	09.08-05.15	*
SKODA (SVW)							
OCTAVIA (913) 06.07-				[CAMBIADO]:Fastback (Compact car-C Segment)			
1.6	Gasolina	FWD	1598	77	105	06.07-12.17	*
1.8 TSI	Gasolina	FWD	1798	118	160	06.07-03.14	*
VW							
CADDY III (2KA, 2KH, 2CA, 2CH) 03.04-03.16				Furgoneta/MPV (LCVs-N1 Segment)			
1.4 (BCA)	Gasolina	FWD	1390	55	75	03.04-05.06	*
1.4 (BUD)	Gasolina	FWD	1390	59	80	05.06-08.10	*
1.6 (BGU)	Gasolina	FWD	1595	75	102	04.04-05.15	*
1.6 (BSE)	Gasolina	FWD	1595	75	102	04.04-05.15	*
1.6 (BSF)	Gasolina	FWD	1595	75	102	04.04-05.15	*
1.9 TDI (BSU)	Diesel	FWD	1896	55	75	09.05-08.10	*
1.9 TDI (BJB)	Diesel	FWD	1896	77	105	04.04-08.10	*
1.9 TDI (BLS)	Diesel	FWD	1896	77	105	04.04-08.10	*
2.0 SDI (BDJ)	Diesel	FWD	1968	51	70	03.04-08.10	*
2.0 SDI (BST)	Diesel	FWD	1968	51	70	03.04-08.10	*
2.0 TDI (BMM)	Diesel	FWD	1968	103	140	09.07-08.10	*
2.0 EcoFuel (BSX)	CNG	FWD	1984	80	109	04.06-05.15	*
CADDY III (2KB, 2KJ, 2CB, 2CJ) 03.04-03.16				MPV (Mini MPV-M1 Segment)			
1.4 (BCA)	Gasolina	FWD	1390	55	75	03.04-05.06	*
1.4 (BUD)	Gasolina	FWD	1390	59	80	05.06-08.10	*
1.6	Gasolina	FWD	1595	65	88	01.05-12.09	*
1.6	Gasolina	FWD	1595	74	101	03.05-05.15	*
1.6 (BGU)	Gasolina	FWD	1595	75	102	04.04-05.15	*
1.6 (BSE)	Gasolina	FWD	1595	75	102	04.04-05.15	*
1.6 (BSF)	Gasolina	FWD	1595	75	102	04.04-05.15	*
1.9 D	Diesel	FWD	1896	48	65	10.05-06.09	*
1.9 TDI (BSU)	Diesel	FWD	1896	55	75	09.05-08.10	*
1.9 TDI (BJB)	Diesel	FWD	1896	77	105	04.04-08.10	*
1.9 TDI (BLS)	Diesel	FWD	1896	77	105	04.04-08.10	*
1.9 TDI 4motion (BLS)	Diesel	4WD	1896	77	105	05.08-08.10	*
2.0 SDI (BDJ)	Diesel	FWD	1968	51	70	03.04-08.10	*
2.0 SDI (BST)	Diesel	FWD	1968	51	70	03.04-08.10	*
2.0 TDI (BMM)	Diesel	FWD	1968	103	140	09.07-08.10	*
2.0 EcoFuel (BSX)	CNG	FWD	1984	80	109	04.06-05.15	*
GOLF V / RABBIT V (1K1) 10.03-07.10				[CAMBIADO]:Fastback (Compact car-C Segment)			
2.0 GTI (BYD)	Gasolina	FWD	1984	169	230	09.06-12.08	*
2.5	Gasolina	FWD	2480	125	170	05.07-11.08	*
GOLF V Variant / BORA V / JETTA V / VENTO V (1K5) 01.07-07.09				[CAMBIADO]:Break (Compact car-C Segment)			
1.4 (BUD)	Gasolina	FWD	1390	59	80	06.07-07.09	*
1.4 TSI (CAXA)	Gasolina	FWD	1390	90	122	06.07-07.09	*
1.4 TSI (BMY)	Gasolina	FWD	1390	103	140	06.07-07.09	*
1.6 (BSE)	Gasolina	FWD	1595	75	102	06.07-07.09	*
1.6 (BSF)	Gasolina	FWD	1595	75	102	06.07-07.09	*

# LISTA DE APLICACIONES - BUYERS GUIDE

1.6 (CCSA)		Gasolina	FWD	1595	75	102	06.07-07.09	*
2.0 TFSI (BWA)		Gasolina	FWD	1984	147	200	06.07-07.09	*
2.0 TFSI (CAWB)		Gasolina	FWD	1984	147	200	06.07-07.09	*
2.0 TFSI (CBFA)		Gasolina	FWD	1984	147	200	06.07-07.09	*
2.0 TFSI (CCTA)		Gasolina	FWD	1984	147	200	06.07-07.09	*
1.6 MultiFuel (CCSA)		Gasol./Etanol	FWD	1595	75	102	11.07-07.09	*
1.9 TDI (BLS)		Diesel	FWD	1896	77	105	06.07-07.09	*
1.9 TDI (BXE)		Diesel	FWD	1896	77	105	06.07-07.09	*
1.9 TDI 4motion (BLS)		Diesel	4WD	1896	77	105	01.08-07.09	*
2.0 TDI		Diesel	FWD	1968	96	131	06.07-07.09	*
2.0 TDI (AZV)		Diesel	FWD	1968	100	136	06.07-07.09	*
2.0 TDI		Diesel	RWD	1968	100	136	06.07-07.09	*
2.0 TDI (BMM)		Diesel	FWD	1968	103	140	06.07-07.09	*
2.0 TDI 16V (BKD)		Diesel	FWD	1968	103	140	06.07-07.09	*
2.0 TDI 16V (CBDB)		Diesel	FWD	1968	103	140	06.07-07.09	*
<b>GOLF VI / JETTA VI (5K1) 10.08-12.14</b>					<b>[CAMBIADO]:Fastback (Compact car-C Segment)</b>			
2.0 TFSI 4motion (CRZA)		Gasolina	4WD	1984	191	260	09.11-11.13	*
2.5 (CBTA)		Gasolina	FWD	2480	125	170	07.09-05.13	*
2.5 (CBUA)		Gasolina	FWD	2480	125	170	07.09-05.13	*
2.0 TDI (CBAA)		Diesel	FWD	1968	100	136	10.08-11.12	*
2.0 TDI (CFFA)		Diesel	FWD	1968	100	136	10.08-11.12	*
2.0 TDI 4motion (CBAB)		Diesel	4WD	1968	103	140	05.09-11.12	*
2.0 TDI 4motion (CFFB)		Diesel	4WD	1968	103	140	05.09-11.12	*
<b>GOLF VI / JETTA VI (5K1_) 10.08-11.12</b>					<b>Furgón/hatchback (Compact car-C Segment)</b>			
2.0 TDI (CFGB)		Diesel	FWD	1968	125	170	05.10-11.12	*
<b>GOLF VI Variant / JETTA VI (AJ5) 07.09-07.14</b>					<b>[CAMBIADO]:Break (Compact car-C Segment)</b>			
2.0 TFSI (CCZA)		Gasolina	FWD	1984	147	200	07.09-07.13	*
1.6 TDI 4motion (CAYC)		Diesel	4WD	1598	77	105	07.09-07.13	*
2.0 TDI (CLCA)		Diesel	FWD	1968	81	110	01.10-07.13	*
<b>JETTA V / BORA / VENTO (1K2) 09.04-12.13</b>					<b>Sedán (Compact car-C Segment)</b>			
1.4 TSI (CAXA)		Gasolina	FWD	1390	90	122	05.07-10.10	*
1.4 TSI (BMY)		Gasolina	FWD	1390	103	140	07.06-10.10	*
1.4 TSI (CAVD)		Gasolina	FWD	1390	118	160	07.08-10.10	*
1.6 (BGU)		Gasolina	FWD	1595	75	102	09.04-10.10	*
1.6 (BSE)		Gasolina	FWD	1595	75	102	09.04-10.10	*
1.6 (BSF)		Gasolina	FWD	1595	75	102	09.04-10.10	*
1.6 (CCSA)		Gasolina	FWD	1595	75	102	09.04-10.10	*
1.6 FSI (BLF)		Gasolina	FWD	1598	85	115	09.05-10.10	*
2.0 FSI (BLR)		Gasolina	FWD	1984	110	150	08.05-10.10	*
2.0 FSI (BLX)		Gasolina	FWD	1984	110	150	08.05-10.10	*
2.0 FSI (BLY)		Gasolina	FWD	1984	110	150	08.05-10.10	*
2.0 FSI (BVY)		Gasolina	FWD	1984	110	150	08.05-10.10	*
2.0 FSI (BVZ)		Gasolina	FWD	1984	110	150	08.05-10.10	*
2.0 TFSI		Gasolina	FWD	1984	125	170	07.08-10.10	*
2.0 TFSI (AXX)		Gasolina	FWD	1984	147	200	10.05-10.10	*
2.0 TFSI (BPY)		Gasolina	FWD	1984	147	200	10.05-10.10	*
2.0 TFSI (BWA)		Gasolina	FWD	1984	147	200	10.05-10.10	*
2.0 TFSI (CAWB)		Gasolina	FWD	1984	147	200	10.05-10.10	*
2.0 TFSI (CBFA)		Gasolina	FWD	1984	147	200	10.05-10.10	*

# LISTA DE APLICACIONES - BUYERS GUIDE

2.0 TFSI (CCTA)		Gasolina	FWD	1984	147	200	10.05-10.10	*
2.5 (BGP)		Gasolina	FWD	2480	110	150	01.06-10.10	*
2.5 (BGQ)		Gasolina	FWD	2480	110	150	01.06-10.10	*
2.5 (BTK)		Gasolina	FWD	2480	110	150	01.06-10.10	*
2.5 (CBTA)		Gasolina	FWD	2480	125	170	07.08-10.10	*
2.5 (CBUA)		Gasolina	FWD	2480	125	170	07.08-10.10	*
2.5 (CCCA)		Gasolina	FWD	2480	125	170	07.08-10.10	*
2.8 VR6		Gasolina	FWD	2792	128	174	10.09-10.10	*
1.6 TDI (CAYB)		Diesel	FWD	1598	66	90	12.09-10.10	*
1.6 TDI (CAYC)		Diesel	FWD	1598	77	105	06.09-10.10	*
1.9 TDI		Diesel	FWD	1896	74	101	08.05-10.10	*
1.9 TDI (BKC)		Diesel	FWD	1896	77	105	08.05-10.10	*
1.9 TDI (BLS)		Diesel	FWD	1896	77	105	08.05-10.10	*
1.9 TDI (BXE)		Diesel	FWD	1896	77	105	08.05-10.10	*
2.0 TDI (AZV)		Diesel	FWD	1968	100	136	09.05-10.10	*
2.0 TDI (CBDA)		Diesel	FWD	1968	100	136	09.05-10.10	*
2.0 TDI (BMM)		Diesel	FWD	1968	103	140	10.05-10.10	*
2.0 TDI 16V (BKD)		Diesel	FWD	1968	103	140	08.05-10.10	*
2.0 TDI 16V (CBDB)		Diesel	FWD	1968	103	140	08.05-10.10	*
2.0 TDI 16V (CBEA)		Diesel	FWD	1968	103	140	08.05-10.10	*
2.0 TDI 16V (CJAA)		Diesel	FWD	1968	103	140	08.05-10.10	*
<b>SCIROCCO III (137, 138) 05.08-</b>					<b>Coupé (Sport compact car-C Segment)</b>			
1.4 TSI (CAVD)		Gasolina	FWD	1390	118	160	05.08-11.17	*
1.4 TSI (CNWA)		Gasolina	FWD	1390	118	160	05.08-11.17	*
1.4 TSI (CTHD)		Gasolina	FWD	1390	118	160	05.08-11.17	*
1.4 TSI (CTKA)		Gasolina	FWD	1390	118	160	05.08-11.17	*
2.0 TFSI (CAWB)		Gasolina	FWD	1984	147	200	05.08-11.09	*
2.0 TDI (CBDB)		Diesel	FWD	1968	103	140	08.08-11.17	*
2.0 TDI (CFHC)		Diesel	FWD	1968	103	140	08.08-11.17	*
<b>SCIROCCO III (137) 06.08-05.14</b>					<b>Furgón/hatchback (Sport compact car-C Segment)</b>			
1.4 TSI (CAVD)		Gasolina	FWD	1390	118	160	06.08-05.14	*
2.0 TDI (CBDB)		Diesel	FWD	1968	103	140	08.08-05.14	*
2.0 TDI (CFHC)		Diesel	FWD	1968	103	140	08.08-05.14	*
<b>TOURAN (1T1, 1T2) 02.03-05.10</b>					<b>MPV (Compact MPV-M1 Segment)</b>			
1.4 TSI (BMY)		Gasolina	FWD	1390	103	140	02.06-05.10	*
1.4 TSI (CAVC)		Gasolina	FWD	1390	103	140	02.06-05.10	*
1.4 TSI (BLG)		Gasolina	FWD	1390	125	170	11.06-05.10	*
1.4 TSI (CAVB)		Gasolina	FWD	1390	125	170	11.06-05.10	*
1.6 (BGU)		Gasolina	FWD	1595	75	102	07.03-05.10	*
1.6 (BSE)		Gasolina	FWD	1595	75	102	07.03-05.10	*
1.6 (BSF)		Gasolina	FWD	1595	75	102	07.03-05.10	*
1.6 FSI (BAG)		Gasolina	FWD	1598	85	115	02.03-01.07	*
1.6 FSI (BLF)		Gasolina	FWD	1598	85	115	02.03-01.07	*
1.6 FSI (BLP)		Gasolina	FWD	1598	85	115	02.03-01.07	*
2.0 FSI		Gasolina	FWD	1984	85	115	10.04-05.10	*
2.0 FSI (AXW)		Gasolina	FWD	1984	110	150	10.03-01.07	*
2.0 FSI (BLR)		Gasolina	FWD	1984	110	150	10.03-01.07	*
2.0 FSI (BLX)		Gasolina	FWD	1984	110	150	10.03-01.07	*
2.0 FSI (BLY)		Gasolina	FWD	1984	110	150	10.03-01.07	*
2.0 FSI (BVY)		Gasolina	FWD	1984	110	150	10.03-01.07	*

# LISTA DE APLICACIONES - BUYERS GUIDE

2.0 FSI (BVZ)		Gasolina	FWD	1984	110	150	10.03-01.07	*
1.6 BiFuel (BSF)		Gasol./Gas (LPG)	FWD	1595	75	102	11.06-05.10	*
1.9 TDI (BRU)		Diesel	FWD	1896	66	90	11.04-05.10	*
1.9 TDI (BXF)		Diesel	FWD	1896	66	90	11.04-05.10	*
1.9 TDI (BXJ)		Diesel	FWD	1896	66	90	11.04-05.10	*
1.9 TDI (AVQ)		Diesel	FWD	1896	74	100	02.03-05.04	*
1.9 TDI (BKC)		Diesel	FWD	1896	77	105	08.03-05.10	*
1.9 TDI (BLS)		Diesel	FWD	1896	77	105	08.03-05.10	*
1.9 TDI (BXE)		Diesel	FWD	1896	77	105	08.03-05.10	*
2.0 TDI (AZV)		Diesel	FWD	1968	100	136	02.03-05.10	*
2.0 TDI (BMM)		Diesel	FWD	1968	103	140	12.05-05.10	*
2.0 TDI 16V (BKD)		Diesel	FWD	1968	103	140	08.03-05.10	*
2.0 TDI (BMN)		Diesel	FWD	1968	125	170	12.05-05.10	*
2.0 TDI (CFJA)		Diesel	FWD	1968	125	170	12.05-05.10	*
2.0 EcoFuel (BSX)		CNG	FWD	1984	80	109	02.06-05.09	*
<b>TOURAN VAN (1T1, 1T2) 02.03-05.10</b>					<b>Furgoneta/MPV (Compact MPV-M1 Segment)</b>			
FSI		Gasolina	FWD	1598	85	116	02.03-11.06	*
2.0 FSI		Gasolina	FWD	1984	110	150	05.04-01.07	*
2.0 EcoFuel		Gasol./Gas (CNG)	FWD	1984	80	109	02.06-11.06	*
1.9 TDI		Diesel	FWD	1896	66	90	11.04-05.10	*
1.9 TDI		Diesel	FWD	1896	74	101	10.03-05.05	*
1.9 TDI		Diesel	FWD	1896	77	105	08.03-11.06	*
2.0 TDI		Diesel	FWD	1968	100	136	02.03-05.10	*
2.0 TDI		Diesel	FWD	1968	103	140	12.05-05.10	*
2.0 TDI		Diesel	FWD	1968	103	140	08.03-05.10	*
<b>VW (FAW)</b>								
<b>CADDY (9HB) 04.04-12.07</b>					<b>[CAMBIADO]:Furgón (LCVs-N1 Segment)</b>			
1.6		Gasolina	FWD	1595	75	102	03.05-	*
2.0		Gasolina	FWD	1996	51	69	03.05-	*
<b>VW (SVW)</b>								
<b>TOURAN II (9R1, 9R3) 11.04-</b>					<b>MPV (Compact MPV-M1 Segment)</b>			
1.4 T		Gasolina	FWD	1390	96	131	12.10-	*
1.8 Turbo		Gasolina	FWD	1781	110	148	11.04-01.08	*
2.0		Gasolina	FWD	1984	85	114	11.04-	*
2.0		Gasolina	FWD	1984	88	120	04.09-	*