

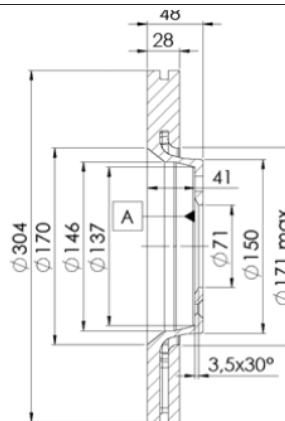
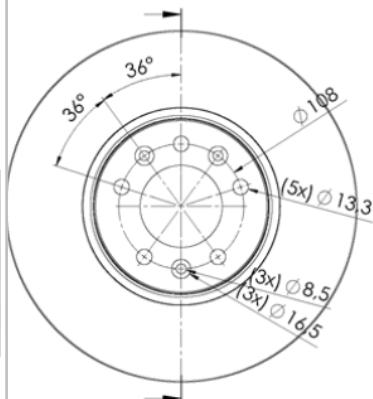
LISTA DE APLICACIONES - BUYERS GUIDE

78RBD24755



Weight: 19.588

| O.E.M. | MAKE |
|---------------|---------|
| 16 188 651 80 | PEUGEOT |
| 4249.24 | PEUGEOT |
| 4249.25 | PEUGEOT |
| 4249.92 | PEUGEOT |
| 9 467 548 587 | FIAT |
| 9 467 548 588 | FIAT |



78RBD24755

E1 90R-02C0433/0076



Ø304x28x48

Sin Filas



| Trac. | CC | Kw | CV | | |
|-------|----|----|----|--|--------------|
| | | | | | Front / Rear |

CITROËN

C5 (RC_) 08.04-

| | | | | | | | |
|--|----------|-----|------|-----|-----|-------------|---|
| 2.0 16V (RCRFJB, RCRFJC) (RFJ (EW10A)) | Gasolina | FWD | 1997 | 103 | 140 | 09.04-08.08 | * |
|--|----------|-----|------|-----|-----|-------------|---|

[CAMBIADO]:Fastback (Large family car-D Segment)

C5 II (RW_) 02.08-

| | | | | | | | |
|--|---------------|-----|------|-----|-----|-------------|---|
| 1.6 VTI 120 (5FS (EP6C)) | Gasolina | FWD | 1598 | 88 | 120 | 07.10-06.15 | * |
| 1.6 THP 150 (5FN (EP6CDT)) | Gasolina | FWD | 1598 | 110 | 150 | 04.09-07.16 | * |
| 1.6 THP 155 (5FV (EP6CDT)) | Gasolina | FWD | 1598 | 115 | 156 | 04.09-07.16 | * |
| 1.8 i 16V (RW6FYC) (6FY (EW7A)) | Gasolina | FWD | 1749 | 92 | 125 | 02.08-10.10 | * |
| 2.0 i 16V (RWRFJC, RWRFJF) (RFJ (EW10A)) | Gasolina | FWD | 1997 | 103 | 140 | 02.08-10.14 | * |
| 2.0 16V BioFlex (RFJ (EW10A)) | Gasol./Etanol | FWD | 1997 | 103 | 140 | 02.08-06.10 | * |
| 1.6 HDi 110 (RW9HZC) (9HZ (DV6TED4)) | Diesel | FWD | 1560 | 80 | 109 | 02.08-10.10 | * |
| 1.6 HDi 110 (9HL (DV6C)) | Diesel | FWD | 1560 | 82 | 112 | 07.10-05.12 | * |
| 1.6 HDi 110 (9HR (DV6C)) | Diesel | FWD | 1560 | 82 | 112 | 07.10-05.12 | * |
| 1.6 HDi 115 (9HL (DV6C)) | Diesel | FWD | 1560 | 84 | 114 | 06.12-06.15 | * |
| 1.6 HDi 115 (9HR (DV6C)) | Diesel | FWD | 1560 | 84 | 114 | 06.12-06.15 | * |
| 2.0 HDi (RHR (DW10BTED4)) | Diesel | FWD | 1997 | 100 | 136 | 02.08-06.14 | * |
| 2.0 HDi 140 (RHF (DW10BTED4)) | Diesel | FWD | 1997 | 103 | 140 | 04.09-06.15 | * |
| 2.0 HDi 150 / BlueHDi 150 (RWRHEJ, RWRHE8) (AHR (DW10FD)) | Diesel | FWD | 1997 | 110 | 150 | 04.09-05.17 | * |
| 2.0 HDi 150 / BlueHDi 150 (RWRHEJ, RWRHE8) (RHE (DW10CTED4)) | Diesel | FWD | 1997 | 110 | 150 | 04.09-05.17 | * |
| 2.0 HDi 165 (RHH (DW10CTED4)) | Diesel | FWD | 1997 | 120 | 163 | 04.09-07.16 | * |

[CAMBIADO]:Break (Large family car-D Segment)

C5 II (RD_) 02.08-

| | | | | | | | |
|---|----------|-----|------|-----|-----|-------------|---|
| 1.6 VTI 120 (RD5FS8, RD5FSA) (5FS (EP6C)) | Gasolina | FWD | 1598 | 88 | 120 | 07.10-06.15 | * |
| 1.6 THP 150 (RD5FN8, RD5FNA) (5FN (EP6CDT)) | Gasolina | FWD | 1598 | 110 | 150 | 07.10-07.16 | * |

Sedán (Large family car-D Segment)

LISTA DE APLICACIONES - BUYERS GUIDE

| | | | | | | | |
|--|---------------|-----|------|-----|--|-------------|---|
| 1.6 THP 155 (RD5FV8, RD5FNA) (5FV (EP6CDT)) | Gasolina | FWD | 1598 | 115 | 156 | 04.09-07.16 | * |
| 1.6 (RD5FMA) (5FM (EP6DT)) | Gasolina | FWD | 1598 | 120 | 163 | 03.11-06.14 | * |
| 1.8 16V (RD6FXC) (6FY (EW7A)) | Gasolina | FWD | 1749 | 92 | 125 | 02.08-10.10 | * |
| 2.0 16V (RDRFJC, RDRFJF) (RFJ (EW10A)) | Gasolina | FWD | 1997 | 103 | 140 | 02.08-10.14 | * |
| 2.0 16V BioFlex (RDRFJF) (RFJ (EW10A)) | Gasol./Etanol | FWD | 1997 | 103 | 140 | 02.08-12.12 | * |
| 1.6 HDi 110 (RD9HZC) (9HZ (DV6TED4)) | Diesel | FWD | 1560 | 80 | 109 | 02.08-10.10 | * |
| 1.6 HDi 110 (RD9HL0, RD9HR8, RD9HRA) (9HL (DV6C)) | Diesel | FWD | 1560 | 82 | 112 | 07.10-05.12 | * |
| 1.6 HDi 110 (RD9HL0, RD9HR8, RD9HRA) (9HR (DV6C)) | Diesel | FWD | 1560 | 82 | 112 | 07.10-05.12 | * |
| 1.6 HDi 115 (RD9HRA, RD9HLA, RD9HL0) (9HL (DV6C)) | Diesel | FWD | 1560 | 84 | 114 | 01.12-06.15 | * |
| 1.6 HDi 115 (RD9HRA, RD9HLA, RD9HL0) (9HR (DV6C)) | Diesel | FWD | 1560 | 84 | 114 | 01.12-06.15 | * |
| 2.0 HDi (RDRHD8, RDRHDJ, RDRHR8, RDRHRJ) (RHF (DW10BTED4)) | Diesel | FWD | 1997 | 100 | 136 | 02.08-06.14 | * |
| 2.0 HDi (RDRHD8, RDRHDJ, RDRHR8, RDRHRJ) (RHR (DW10BTED4)) | Diesel | FWD | 1997 | 100 | 136 | 02.08-06.14 | * |
| 2.0 HDi (RDRHR8) (RHR (DW10BTED4)) | Diesel | FWD | 1997 | 101 | 138 | 10.14-05.17 | * |
| 2.0 HDi 140 (RDRHF8, RDRHFA, RDRHA8, RDRHAJ) (RHF (DW10BTED4)) | Diesel | FWD | 1997 | 103 | 140 | 11.08-06.15 | * |
| 2.0 HDi 150 / BlueHdi 150 (RWRHEJ, RWRHE8) (AHR (DW10FD)) | Diesel | FWD | 1997 | 110 | 150 | 04.09-05.17 | * |
| 2.0 HDi 150 / BlueHdi 150 (RWRHEJ, RWRHE8) (RHE (DW10CTED4)) | Diesel | FWD | 1997 | 110 | 150 | 04.09-05.17 | * |
| 2.0 HDi 165 (RDRHHA, RDRHH8) (RHH (DW10CTED4)) | Diesel | FWD | 1997 | 120 | 163 | 04.09-07.16 | * |
| JUMPY II / DISPATCH 01.07- | | | | | [CAMBIADO]:Furgón (LCVs-N1 Segment) | | |
| 2.0 i (RFH (EW10A)) | Gasolina | FWD | 1997 | 103 | 140 | 01.07-03.16 | * |
| 1.6 HDi 90 16V (9HU (DV6UTED4)) | Diesel | FWD | 1560 | 66 | 90 | 01.07-03.16 | * |
| 1.6 HDi 90 8V (9HH (DV6DUM)) | Diesel | FWD | 1560 | 66 | 90 | 01.07-03.16 | * |
| 1.6 HDi 90 8V (9HM (DV6UC)) | Diesel | FWD | 1560 | 66 | 90 | 01.07-03.16 | * |
| 2.0 HDi 95 (AHY (DW10CE)) | Diesel | FWD | 1997 | 72 | 98 | 07.11-03.16 | * |
| 2.0 HDi 120 (RHK (DW10UTED4)) | Diesel | FWD | 1997 | 88 | 120 | 01.07-03.16 | * |
| 2.0 HDi 120 4x4 (RHK (DW10UTED4)) | Diesel | 4WD | 1997 | 88 | 120 | 01.10-03.16 | * |
| 2.0 HDi 125 (AHZ (DW10CD)) | Diesel | FWD | 1997 | 94 | 128 | 07.11-03.16 | * |
| 2.0 HDi 125 4x4 (AHZ (DW10CD)) | Diesel | 4WD | 1997 | 94 | 128 | 07.11-03.16 | * |
| 2.0 HDi 140 (RHR (DW10BTED4)) | Diesel | FWD | 1997 | 100 | 136 | 01.07-03.16 | * |
| 2.0 HDi 165 (RHH (DW10CTED4)) | Diesel | FWD | 1997 | 120 | 163 | 07.10-03.16 | * |
| JUMPY II / DISPATCH (VF7) 01.07- | | | | | Bus (Minibus-M2-Segment) | | |
| 2.0 i (RFH (EW10A)) | Gasolina | FWD | 1997 | 103 | 140 | 01.07-03.16 | * |
| 2.0 i (RFJ (EW10A)) | Gasolina | FWD | 1997 | 103 | 140 | 01.07-03.16 | * |
| 1.6 HDi 90 16V (9HU (DV6UTED4)) | Diesel | FWD | 1560 | 66 | 90 | 01.07-03.16 | * |
| 1.6 HDi 90 8V (9HH (DV6DUM)) | Diesel | FWD | 1560 | 66 | 90 | 01.07-03.16 | * |
| 1.6 HDi 90 8V (9HM (DV6UC)) | Diesel | FWD | 1560 | 66 | 90 | 01.07-03.16 | * |
| 2.0 HDi 95 (AHY (DW10CE)) | Diesel | FWD | 1997 | 72 | 98 | 07.11-03.16 | * |
| 2.0 HDi 120 (RHK (DW10UTED4)) | Diesel | FWD | 1997 | 88 | 120 | 01.07-03.16 | * |
| 2.0 HDi 125 (AHZ (DW10CD)) | Diesel | FWD | 1997 | 94 | 128 | 07.11-03.16 | * |
| 2.0 HDi 140 (RHR (DW10BTED4)) | Diesel | FWD | 1997 | 100 | 136 | 01.07-03.16 | * |
| 2.0 HDi 165 (RHH (DW10CTED4)) | Diesel | FWD | 1997 | 120 | 163 | 07.10-03.16 | * |
| JUMPY II / DISPATCH 11.06- | | | | | Caja/Chasis (LCVs-N1 Segment) | | |
| 2.0 I (X_RFH) | Gasolina | FWD | 1997 | 103 | 140 | 11.06-03.16 | * |
| 1.6 HDi 90 16V (9HU (DV6UTED4)) | Diesel | FWD | 1560 | 66 | 90 | 06.07-03.16 | * |
| 1.6 HDi 90 8V (9HH (DV6DUM)) | Diesel | FWD | 1560 | 66 | 90 | 06.07-03.16 | * |
| 2.0 HDI 100 (X_AHY) | Diesel | FWD | 1997 | 72 | 98 | 07.11-03.16 | * |

LISTA DE APLICACIONES - BUYERS GUIDE

| | | | | | | | | |
|---|--|----------|-----|------|--|-----|-------------|---|
| 2.0 HDI (X_RHG) | | Diesel | FWD | 1997 | 88 | 120 | 01.09-03.16 | * |
| 2.0 HDi 125 (AHZ (DW10CD)) | | Diesel | FWD | 1997 | 94 | 128 | 07.11- | * |
| 2.0 HDi (X_RHH) | | Diesel | FWD | 1997 | 120 | 163 | 07.10-03.16 | * |
| FIAT | | | | | | | | |
| SCUDO II (270_, 272_) 01.07- | | | | | [CAMBIADO]:Furgón (LCVs-N1 Segment) | | | |
| 1.6 D Multijet (9HU) | | Diesel | FWD | 1560 | 66 | 90 | 01.07-03.16 | * |
| 2.0 D Multijet (RHK) | | Diesel | FWD | 1997 | 88 | 120 | 01.07-03.16 | * |
| 2.0 D Multijet 4x4 (RHK) | | Diesel | 4WD | 1997 | 88 | 120 | 01.07-03.16 | * |
| 2.0 D Multijet (RH02) | | Diesel | FWD | 1997 | 94 | 128 | 05.11-03.16 | * |
| 2.0 D Multijet 4x4 (RH02) | | Diesel | 4WD | 1997 | 94 | 128 | 05.11-03.16 | * |
| 2.0 D Multijet (RHR) | | Diesel | FWD | 1997 | 100 | 136 | 01.07-03.16 | * |
| 2.0 D Multijet 4x4 (RHR) | | Diesel | 4WD | 1997 | 100 | 136 | 01.07-03.16 | * |
| 2.0 D Multijet (RH02) | | Diesel | FWD | 1997 | 120 | 163 | 07.10-03.16 | * |
| 2.0 D Multijet (RHH) | | Diesel | FWD | 1997 | 120 | 163 | 07.10-03.16 | * |
| SCUDO II (270_, 272_) 01.07- | | | | | Bus (Minibus-M2-Segment) | | | |
| 1.6 D Multijet (9HU) | | Diesel | FWD | 1560 | 66 | 90 | 01.07-03.16 | * |
| 2.0 D Multijet (RHK) | | Diesel | FWD | 1997 | 88 | 120 | 01.07-03.16 | * |
| 2.0 D Multijet 4x4 (RHK) | | Diesel | 4WD | 1997 | 88 | 120 | 01.07-03.16 | * |
| 2.0 D Multijet (RH02) | | Diesel | FWD | 1997 | 94 | 128 | 04.11-03.16 | * |
| 2.0 D Multijet 4x4 (RH02) | | Diesel | 4WD | 1997 | 94 | 128 | 04.11-03.16 | * |
| 2.0 D Multijet (RHR) | | Diesel | FWD | 1997 | 100 | 136 | 01.07-03.16 | * |
| 2.0 D Multijet 4x4 (RHR) | | Diesel | 4WD | 1997 | 100 | 136 | 01.07-03.16 | * |
| 2.0 D Multijet (RH02) | | Diesel | FWD | 1997 | 120 | 163 | 07.10-03.16 | * |
| 2.0 D Multijet (RHH) | | Diesel | FWD | 1997 | 120 | 163 | 07.10-03.16 | * |
| SCUDO II (270_, 272_) 01.07- | | | | | Caja/Chasis (LCVs-N1 Segment) | | | |
| 1.6 D Multijet (9HU) | | Diesel | FWD | 1560 | 66 | 90 | 01.07-03.16 | * |
| 2.0 D Multijet (RHK) | | Diesel | FWD | 1997 | 88 | 120 | 01.07-03.16 | * |
| 2.0 D Multijet (RH02) | | Diesel | FWD | 1997 | 94 | 128 | 05.11-03.16 | * |
| 2.0 D Multijet (DW10BTED4) | | Diesel | FWD | 1997 | 100 | 136 | 01.07-03.16 | * |
| 2.0 D Multijet (RHR) | | Diesel | FWD | 1997 | 100 | 136 | 01.07-03.16 | * |
| 2.0 D Multijet (RH02) | | Diesel | FWD | 1997 | 120 | 163 | 07.10-03.16 | * |
| 2.0 D Multijet (RHH) | | Diesel | FWD | 1997 | 120 | 163 | 07.10-03.16 | * |
| PEUGEOT | | | | | | | | |
| 407 (6C_) 10.05- | | | | | Coupé (Large family car-D Segment) | | | |
| 2.0 HDi (RHH (DW10CTED4)) | | Diesel | FWD | 1997 | 120 | 163 | 06.09- | * |
| EXPERT II (VF3A_, VF3U_, VF3X_) 01.07- | | | | | [CAMBIADO]:Furgón (LCVs-N1 Segment) | | | |
| 2.0 16V (RFH (EW10A)) | | Gasolina | FWD | 1997 | 103 | 140 | 01.07- | * |
| 2.0 16V (RFJ (EW10A)) | | Gasolina | FWD | 1997 | 103 | 140 | 01.07- | * |
| 1.6 HDi 90 16V (9HU (DV6UTED4)) | | Diesel | FWD | 1560 | 66 | 90 | 01.07- | * |
| 1.6 HDi 90 8V (9HH (DV6DUM)) | | Diesel | FWD | 1560 | 66 | 90 | 01.07- | * |
| 1.6 HDi 90 8V (9HM (DV6UC)) | | Diesel | FWD | 1560 | 66 | 90 | 01.07- | * |
| 2.0 HDi 100 | | Diesel | FWD | 1997 | 72 | 98 | 03.11- | * |
| 2.0 HDi 120 (RHK (DW10UTED4)) | | Diesel | FWD | 1997 | 88 | 120 | 01.07- | * |
| 2.0 HDi 120 4x4 (RHK (DW10UTED4)) | | Diesel | 4WD | 1997 | 88 | 120 | 01.10- | * |
| 2.0 HDi 130 (AHZ (DW10CD)) | | Diesel | FWD | 1997 | 94 | 128 | 03.11- | * |
| 2.0 HDi 130 4x4 (AHZ (DW10CD)) | | Diesel | 4WD | 1997 | 94 | 128 | 01.12-03.16 | * |
| 2.0 HDi 140 (RHR (DW10BTED4)) | | Diesel | FWD | 1997 | 100 | 136 | 01.07- | * |
| 2.0 HDi 165 (RHH (DW10CTED4)) | | Diesel | FWD | 1997 | 120 | 163 | 09.09- | * |

LISTA DE APLICACIONES - BUYERS GUIDE

| EXPERT II 01.07- | | | | | Caja/Chasis (LCVs-N1 Segment) | | | |
|-----------------------------------|----------|-----|------|-----|-------------------------------------|-------------|---|--|
| 2.0 16V (X_RFH) | Gasolina | FWD | 1997 | 103 | 140 | 01.07-03.16 | * | |
| 1.6 HDi 90 16V (9HU (DV6UTED4)) | Diesel | FWD | 1560 | 66 | 90 | 01.07- | * | |
| 1.6 HDi 90 8V (9HH (DV6DUM)) | Diesel | FWD | 1560 | 66 | 90 | 01.07- | * | |
| 1.6 HDi 90 8V (9HM (DV6UC)) | Diesel | FWD | 1560 | 66 | 90 | 01.07- | * | |
| 2.0 HDi 120 (RHK (DW10UTED4)) | Diesel | FWD | 1997 | 88 | 120 | 01.07- | * | |
| 2.0 HDi 130 (AHZ (DW10CD)) | Diesel | FWD | 1997 | 94 | 128 | 03.11- | * | |
| 2.0 HDi 140 (RHR (DW10BTED4)) | Diesel | FWD | 1997 | 100 | 136 | 01.07- | * | |
| 2.0 HDi 165 (RHH (DW10CTED4)) | Diesel | FWD | 1997 | 120 | 163 | 09.09- | * | |
| EXPERT II Tepee (VF3X_) 01.07- | | | | | Bus (Minibus-M2-Segment) | | | |
| 2.0 16V (RFH (EW10A)) | Gasolina | FWD | 1997 | 103 | 140 | 01.07-03.16 | * | |
| 2.0 16V (RFJ (EW10A)) | Gasolina | FWD | 1997 | 103 | 140 | 01.07-03.16 | * | |
| 1.6 HDi 90 16V (9HU (DV6UTED4)) | Diesel | FWD | 1560 | 66 | 90 | 01.07-03.16 | * | |
| 1.6 HDi 90 8V (9HH (DV6DUM)) | Diesel | FWD | 1560 | 66 | 90 | 01.07-03.16 | * | |
| 1.6 HDi 90 8V (9HM (DV6UC)) | Diesel | FWD | 1560 | 66 | 90 | 01.07-03.16 | * | |
| 2.0 HDi 100 (AHY (DW10CE)) | Diesel | FWD | 1997 | 72 | 98 | 03.11-03.16 | * | |
| 2.0 HDi 120 (RHK (DW10UTED4)) | Diesel | FWD | 1997 | 88 | 120 | 01.07-03.16 | * | |
| 2.0 HDi 120 4x4 (RHK (DW10UTED4)) | Diesel | 4WD | 1997 | 88 | 120 | 01.07-03.16 | * | |
| 2.0 HDi 130 (AHZ (DW10CD)) | Diesel | FWD | 1997 | 94 | 128 | 03.11- | * | |
| 2.0 HDi 130 4x4 (AHZ (DW10CD)) | Diesel | 4WD | 1997 | 94 | 128 | 03.11-03.16 | * | |
| 2.0 HDi 140 (RHR (DW10BTED4)) | Diesel | FWD | 1997 | 100 | 136 | 01.07- | * | |
| 2.0 HDi 165 (RHH (DW10CTED4)) | Diesel | FWD | 1997 | 120 | 163 | 09.09- | * | |
| PARTNER (5_, G_) 03.97-07.08 | | | | | Caja/Chasis (LCVs-N1 Segment) | | | |
| 1.6 HDi 75 | Diesel | FWD | 1560 | 55 | 75 | 02.06-07.08 | * | |
| TOYOTA | | | | | | | | |
| PROACE (MDX_) 06.13-03.16 | | | | | [CAMBIADO]:Furgón (LCVs-N1 Segment) | | | |
| 1.6 D (MDX9) (3WZ-TV) | Diesel | FWD | 1560 | 66 | 90 | 06.13-03.16 | * | |
| 2.0 D (MDX3) (4WZ-FTW) | Diesel | FWD | 1997 | 94 | 128 | 06.13-03.16 | * | |
| 2.0 D 4x4 (MDX4) (4WZ-FTW) | Diesel | 4WD | 1997 | 94 | 128 | 06.13-03.16 | * | |
| 2.0 D (MDX6) (4WZ-FHV) | Diesel | FWD | 1997 | 120 | 163 | 06.13-03.16 | * | |