

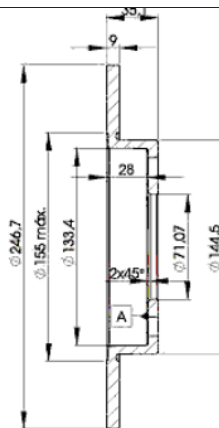
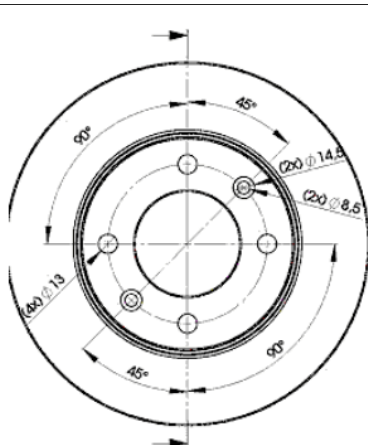
# LISTA DE APLICACIONES - BUYERS GUIDE

## 78RBD24746



Weight: 6.428

O.E.M.	MAKE
4246.W9	PEUGEOT
4246.X8	CITROËN
4249.52	PEUGEOT
4249.53	CITROËN
4249.90	PEUGEOT



## 78RBD24746

E1 90R-02C0415/0046



Ø247x9x3.5

Sin Filas



Trac.	CC	Kw	CV		
					Front / Rear

### CITROËN

#### BERLINGO II MULTISPACE (B9) 04.08-

1.6 (NFU (TU5JP4))	Gasolina	FWD	1587	80	109	04.08-	*
--------------------	----------	-----	------	----	-----	--------	---

#### BERLINGO / BERLINGO FIRST (M\_) 07.96-12.11

1.6 16V (NFU (TU5JP4))	Gasolina	FWD	1587	81	110	08.05-12.07	*
1.6 HDI 92 (9HJ (DV6DTEDM))	Diesel	FWD	1560	68	92	11.09-12.10	*
1.6 HDI 92 (9HP (DV6DTED))	Diesel	FWD	1560	68	92	11.09-12.10	*

#### BERLINGO / BERLINGO FIRST (MF\_, GJK\_, GFK\_) 07.96-12.11

1.6 HDI 92 (9HJ (DV6DTEDM))	Diesel	FWD	1560	68	92	11.09-12.10	*
1.6 HDI 92 (9HP (DV6DTED))	Diesel	FWD	1560	68	92	11.09-12.10	*

#### C2 (JM\_) 07.03-09.17

1.4 (KFV (TU3JP))	Gasolina	FWD	1360	55	75	10.06-12.09	*
1.6 (NFU (TU5JP4))	Gasolina	FWD	1587	80	109	07.03-10.10	*
1.6 VTS (NFS (TU5JP4S))	Gasolina	FWD	1587	90	122	10.04-12.09	*
1.4 HDi (8HX (DV4TD))	Diesel	FWD	1398	51	69	09.03-04.05	*
1.6 HDi (9HZ (DV6TED4))	Diesel	FWD	1560	80	109	09.05-12.09	*

#### C2 II ENTERPRISE (JG\_) 11.03-

1.4 HDi (8HX (DV4TD))	Diesel	FWD	1398	50	68	09.06-12.09	*
1.4 HDi (8HZ (DV4TD))	Diesel	FWD	1398	51	69	11.03-04.05	*

#### C3 (FC\_, FN\_) 02.02-

1.4 16V (KFU (ET3J4))	Gasolina	FWD	1360	65	88	12.03-08.10	*
1.6 16V (NFU (TU5JP4))	Gasolina	FWD	1587	80	109	02.02-08.10	*
1.6 16V (NFU (TU5JP4))	Gasolina	FWD	1587	81	110	05.03-09.05	*

# LISTA DE APLICACIONES - BUYERS GUIDE

1.6 BioFlex (NFU (TU5JP4))		Gasol./Etanol	FWD	1587	83	113	06.05-12.13	*
1.6 16V HDi (9HX (DV6ATED4))		Diesel	FWD	1560	66	90	10.05-12.09	*
<b>C3 Pluriel (HB_) 05.03-</b>					<b>Cabrio (Supermini car-B Segment)</b>			
1.6 (NFU (TU5JP4))		Gasolina	FWD	1587	80	109	05.03-	*
<b>C4 (LC_) 11.04-12.14</b>					<b>[CAMBIADO]:Fastback (Compact car-C Segment)</b>			
1.4 16V (KFU (ET3J4))		Gasolina	FWD	1360	65	88	11.04-07.11	*
1.6 16V (NFU (TU5JP4))		Gasolina	FWD	1587	80	109	11.04-07.11	*
2.0 16V (RFJ (EW10A))		Gasolina	FWD	1997	105	143	09.06-07.09	*
1.6 16V Bio-Flex (NFU (TU5JP4))		Gasol./Etanol	FWD	1587	80	109	09.07-07.08	*
1.6 HDi (9HX (DV6ATED4))		Diesel	FWD	1560	66	90	11.04-07.11	*
1.6 HDi (9HY (DV6TED4))		Diesel	FWD	1560	80	109	11.04-07.11	*
1.6 HDi (9HZ (DV6TED4))		Diesel	FWD	1560	80	109	11.04-07.11	*
1.6 HDi		Diesel	FWD	1560	85	116	07.06-07.11	*
2.0 HDi (RHZ (DW10ATED))		Diesel	FWD	1997	81	110	04.07-07.08	*
2.0 HDi (RHR (DW10BTED4))		Diesel	FWD	1997	100	136	11.04-07.11	*
<b>C4 (LA_) 11.04-12.13</b>					<b>Coupé (Compact car-C Segment)</b>			
1.4 16V (KFU (ET3J4))		Gasolina	FWD	1360	65	88	11.04-07.11	*
1.6 16V (NFU (TU5JP4))		Gasolina	FWD	1587	80	109	11.04-07.11	*
1.6 THP (5FT (EP6DT))		Gasolina	FWD	1598	103	140	06.08-07.11	*
2.0 VTR (RFJ (EW10A))		Gasolina	FWD	1997	103	140	10.06-12.07	*
1.6 HDi (9HX (DV6ATED4))		Diesel	FWD	1560	66	90	11.04-07.11	*
1.6 HDi (9HY (DV6TED4))		Diesel	FWD	1560	80	109	11.04-07.11	*
1.6 HDi (9HZ (DV6TED4))		Diesel	FWD	1560	80	109	11.04-07.11	*
<b>C4 (LR_) 02.05-12.10</b>					<b>Furgón/hatchback (Compact car-C Segment)</b>			
2.0 HDi (RHR (DW10BTED4))		Diesel	FWD	1997	100	136	02.05-12.10	*
<b>C4 / C4 PALLAS 07.06-</b>					<b>Sedán (Compact car-C Segment)</b>			
1.6 16V (NFU (TU5JP4))		Gasolina	FWD	1587	80	109	07.06-07.11	*
2.0 16V		Gasolina	FWD	1997	101	138	06.07-11.14	*
2.0 16V (RFJ (EW10A))		Gasolina	FWD	1997	103	140	07.06-07.11	*
2.0 Exclusive 16V (RFJ (EW10A))		Gasolina	FWD	1997	105	143	07.07-11.14	*
1.6 HDi		Diesel	FWD	1560	85	116	07.06-08.13	*
<b>XSARA PICASSO (N68) 09.99-06.12</b>					<b>MPV (Compact MPV-M1 Segment)</b>			
1.6 16V (NFU (TU5JP4))		Gasolina	FWD	1587	81	110	06.05-09.06	*
2.0		Gasolina	FWD	1997	88	120	02.04-10.04	*
2.0 16V (RFN (EW10J4))		Gasolina	FWD	1997	101	138	12.99-11.11	*
1.6 16V LPG		Gasol./Gas (LPG)	FWD	1587	80	109	06.04-12.10	*
2.0 HDi (RHY (DW10TD))		Diesel	FWD	1997	66	90	12.99-12.11	*
<b>FENGSHEN</b>								
<b>H30 01.10-</b>					<b>[CAMBIADO]:Fastback ()</b>			
1.5 (DFMA15)		Gasolina	FWD	1497	85	116	04.13-12.17	*
1.6 (N6A 10FX3A PSA)		Gasolina	FWD	1587	78	106	01.10-12.15	*
<b>S30 07.09-</b>					<b>Sedán ()</b>			
1.5		Gasolina	FWD	1497	85	116	03.13-12.17	*
1.6 (N6A 10FX3A PSA)		Gasolina	FWD	1587	78	106	07.09-	*
1.6 CNG		Gasol./Gas (CNG)	FWD	1587	67	91	03.13-	*

# LISTA DE APLICACIONES - BUYERS GUIDE

PEUGEOT								
1007 (KM_) 04.05-					[CAMBIADO]:Fastback (Mini MPV-M1 Segment)			
1.6 16V (NFU (TU5JP4))	Gasolina	FWD	1587	80	109	04.05-	*	
307 (3E) 03.02-					[CAMBIADO]:Break (Compact car-C Segment)			
1.4 (KFW (TU3JP))	Gasolina	FWD	1360	55	75	04.02-09.03	*	
1.4 16V (KFU (ET3J4))	Gasolina	FWD	1360	65	88	11.03-07.07	*	
1.6 16V (NFU (TU5JP4))	Gasolina	FWD	1587	80	109	03.02-04.08	*	
2.0 (RFN (EW10J4))	Gasolina	FWD	1997	100	136	03.02-06.05	*	
1.4 HDi (8HZ (DV4TD))	Diesel	FWD	1398	50	68	03.02-06.05	*	
2.0 HDI 90 (RHY (DW10TD))	Diesel	FWD	1997	66	90	03.02-04.08	*	
2.0 HDI 110 (RHS (DW10ATED))	Diesel	FWD	1997	79	107	03.02-12.09	*	
307 (3A/C) 08.00-					[CAMBIADO]:Fastback (Compact car-C Segment)			
1.4 (KFW (TU3JP))	Gasolina	FWD	1360	55	75	08.00-09.03	*	
1.4 16V (KFU (ET3J4))	Gasolina	FWD	1360	65	88	11.03-07.07	*	
1.6 16V (NFU (TU5JP4))	Gasolina	FWD	1587	80	109	08.00-11.07	*	
1.6 (NFU (TU5JP4))	Gasolina	FWD	1587	81	110	07.06-04.12	*	
2.0 16V (RFN (EW10J4))	Gasolina	FWD	1997	100	136	08.00-06.05	*	
2.0 (RFJ (EW10A))	Gasolina	FWD	1997	105	143	08.08-12.11	*	
2.0 (RFN (EW10J4))	Gasolina	FWD	1997	105	143	08.08-12.11	*	
1.6 Flex (N6A (TU5JP4))	Gasol./Etanol	FWD	1587	83	113	07.06-12.12	*	
1.4 HDi (8HX (DV4TD))	Diesel	FWD	1398	50	68	10.01-06.05	*	
1.4 HDi (8HZ (DV4TD))	Diesel	FWD	1398	50	68	10.01-06.05	*	
1.6 HDi (9HV (DV6TED4B))	Diesel	FWD	1560	66	90	04.05-03.09	*	
1.6 HDi (9HV (DV6TED4BU))	Diesel	FWD	1560	66	90	04.05-03.09	*	
1.6 HDi (9HX (DV6ATED4))	Diesel	FWD	1560	66	90	04.05-03.09	*	
1.6 HDi 110 (9HY (DV6TED4))	Diesel	FWD	1560	80	109	02.04-03.09	*	
1.6 HDi 110 (9HZ (DV6TED4))	Diesel	FWD	1560	80	109	02.04-03.09	*	
2.0 HDI 90 (RHY (DW10TD))	Diesel	FWD	1997	66	90	08.00-03.07	*	
2.0 HDI 110 (RHS (DW10ATED))	Diesel	FWD	1997	79	107	08.00-03.07	*	
307 (3B) 03.03-06.09					Cabrio (Compact car-C Segment)			
1.6 16V (NFU (TU5JP4))	Gasolina	FWD	1587	80	110	03.03-04.09	*	
2.0 16V (RFN (EW10J4))	Gasolina	FWD	1997	100	136	10.03-06.05	*	
2.0 16V (RFJ (EW10A))	Gasolina	FWD	1997	103	140	12.04-04.09	*	
2.0 16V	Gasolina	FWD	1997	105	143	10.05-04.09	*	
2.0 16V (RFK (EW10J4S))	Gasolina	FWD	1997	130	177	10.03-04.09	*	
2.0 16V (RFK (EW10J4S))	Gasolina	FWD	1997	132	180	04.05-06.09	*	
307 01.01-					Sedán (Compact car-C Segment)			
1.6	Gasolina	FWD	1587	81	110	08.06-12.12	*	
2.0	Gasolina	FWD	1997	103	140	09.06-12.08	*	
2.0	Gasolina	FWD	1997	105	143	03.04-04.09	*	
2.0 HDi	Diesel	FWD	1997	80	109	09.06-03.12	*	
307 SW (3H) 03.02-					[CAMBIADO]:Break (Compact car-C Segment)			
1.4 (KFW (TU3JP))	Gasolina	FWD	1360	55	75	04.02-09.03	*	
1.4 16V (KFU (ET3J4))	Gasolina	FWD	1360	65	88	11.03-07.07	*	
1.6 16V (NFU (TU5JP4))	Gasolina	FWD	1587	80	109	03.02-04.08	*	
2.0 16V (RFN (EW10J4))	Gasolina	FWD	1997	100	136	03.02-06.05	*	
2.0 16V (RFJ (EW10A))	Gasolina	FWD	1997	103	140	03.05-04.08	*	
2.0 16V (RFJ (EW10A))	Gasolina	FWD	1997	105	143	10.05-12.09	*	

# LISTA DE APLICACIONES - BUYERS GUIDE

1.6 BioFlex (NFU (TU5JP4))		Gasol./Etanol	FWD	1587	80	109	09.07-04.08	*
1.4 HDi 70		Diesel	FWD	1398	50	68	03.02-06.05	*
1.4 HDi		Diesel	RWD	1398	51	69	04.02-06.05	*
1.6 HDi 90 (9HV (DV6TED4B))		Diesel	FWD	1560	66	90	04.05-04.08	*
1.6 HDi 90 (9HV (DV6TED4BU))		Diesel	FWD	1560	66	90	04.05-04.08	*
1.6 HDi 90 (9HX (DV6ATED4))		Diesel	FWD	1560	66	90	04.05-04.08	*
1.6 HDi 90 (9HX (DV6AUTED4))		Diesel	FWD	1560	66	90	04.05-04.08	*
1.6 HDi 110 (9HY (DV6TED4))		Diesel	FWD	1560	80	109	11.03-12.07	*
1.6 HDi 110 (9HZ (DV6TED4))		Diesel	FWD	1560	80	109	11.03-12.07	*
2.0 HDi 90 (RHY (DW10TD))		Diesel	FWD	1997	66	90	03.02-04.08	*
2.0 HDi 110 (RHS (DW10ATED))		Diesel	FWD	1997	79	107	03.02-12.09	*
2.0 HDi 135 (RHR (DW10BTED4))		Diesel	FWD	1997	100	136	02.04-04.08	*
<b>307 SW (3E_, 3H_) 04.02-12.09</b>					<b>[CAMBIADO]:Furgón/Break (Compact car-C Segment)</b>			
1.4 HDi (8HZ (DV4TD))		Diesel	FWD	1398	51	69	04.02-06.05	*
1.6 HDi (9HX (DV6ATED4))		Diesel	FWD	1560	66	90	04.06-10.08	*
2.0 HDi (RHY (DW10TD))		Diesel	FWD	1997	66	90	04.03-04.08	*
2.0 HDi (RHZ (DW10ATED))		Diesel	FWD	1997	79	107	01.03-12.09	*
2.0 HDi (RHR (DW10BTED4))		Diesel	FWD	1997	100	136	04.04-11.07	*
<b>PARTNER (5_, G_) 03.97-07.08</b>					<b>Caja/Chasis (LCVs-N1 Segment)</b>			
1.6		Gasolina	FWD	1587	80	109	09.00-05.08	*
2.0 HDi		Diesel	FWD	1997	66	90	11.02-07.08	*
<b>PARTNER / GRAND RAID / RANCH (5_, G_) 05.96-12.15</b>					<b>MPV (Compact MPV-M1 Segment)</b>			
1.6 Flexfuel (NFU (TU5JP4))		Gasol./Etanol	FWD	1587	80	109	09.00-10.02	*
1.6 HDi 92 (9HJ (DV6DTEDM))		Diesel	FWD	1560	68	92	11.09-12.10	*
1.6 HDi 92 (9HP (DV6DTED))		Diesel	FWD	1560	68	92	11.09-12.10	*
<b>PARTNER / RANCH (5_, G_) 06.96-12.15</b>					<b>Furgoneta/MPV (LCVs-N1 Segment)</b>			
1.4 BiFuel		Gasol./Gas (LPG)	FWD	1360	55	75	04.03-10.06	*
1.6 BioFlex (NFU (TU5JP4))		Gasol./Etanol	FWD	1587	80	109	09.00-10.02	*
1.6 HDi 75 (9HK (DV6ETEDM))		Diesel	FWD	1560	55	75	08.05-07.08	*
1.6 HDi 92 (9HJ (DV6DTEDM))		Diesel	FWD	1560	68	92	11.09-12.10	*
1.6 HDi 92 (9HP (DV6DTED))		Diesel	FWD	1560	68	92	11.09-12.10	*
<b>PARTNER II ORIGIN (G_) 07.08-12.15</b>					<b>Furgoneta/MPV (LCVs-N1 Segment)</b>			
1.9 D (WJY (DW8B))		Diesel	FWD	1868	51	69	08.08-12.15	*
<b>PARTNER II ORIGIN (G_) 07.08-12.13</b>					<b>MPV (Compact MPV-M1 Segment)</b>			
1.9 D (WJY (DW8B))		Diesel	FWD	1868	51	69	08.08-12.13	*