

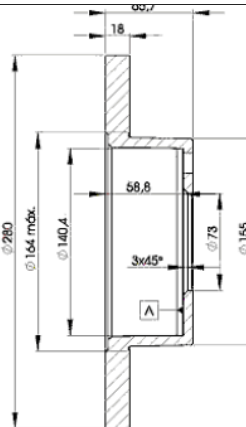
LISTA DE APLICACIONES - BUYERS GUIDE

78RBD24680



Weight: 15.204

O.E.M.	MAKE
1 300 500 080	FIAT
4246.J8	PEUGEOT
4246.J9	PEUGEOT
7 173 891 0	FIAT



78RBD24680

E1 90R-02C0415/0093



Ø280x18x65.5

Sin Filas



Trac.	CC	Kw	CV
-------	----	----	----



Front / Rear

CITROËN

JUMPER II / RELAY (230L) 02.94-08.02

[CAMBIADO]:Furgón (LCVs-N1 Segment)

2.0 (RFW (XU10J2U))	Gasolina	FWD	1998	80	109	03.94-04.02	*
2.0 4x4 (RFW (XU10J2U))	Gasolina	4WD	1998	80	109	10.96-01.02	*
2.0 (XU10J2)	Gasolina	FWD	1998	81	110	04.02-06.06	*
1.9 D (DJY (XUD9A))	Diesel	FWD	1905	50	68	07.99-04.02	*
1.9 D (D9B (XUD9A/U))	Diesel	FWD	1905	51	69	02.94-04.02	*
1.9 TD (DHX (XUD9TF/BTF))	Diesel	FWD	1905	66	90	03.94-04.02	*
2.0 HDi (RHV (DW10TD))	Diesel	FWD	1997	62	84	11.01-04.02	*
2.0 HDi (RHV (DW10UTD))	Diesel	FWD	1997	62	84	04.02-06.06	*
2.2 HDi (4HY (DW12UTD))	Diesel	FWD	2179	74	101	04.02-06.06	*
2.5 D (T9A (DJ5))	Diesel	FWD	2446	63	86	03.94-04.02	*
2.5 D 4x4 (T9A (DJ5))	Diesel	4WD	2446	63	86	03.00-04.02	*
2.8 D (8140.63 (F28D))	Diesel	FWD	2798	64	87	01.99-02.02	*
2.8 HDi (8140.43S)	Diesel	FWD	2798	94	128	04.02-06.06	*
2.8 HDi (8140.43N)	Diesel	FWD	2798	107	146	04.04-06.06	*

JUMPER II / RELAY (230P) 02.94-04.02

Bus (Minibus-M2-Segment)

2.0 (RFW (XU10J2U))	Gasolina	FWD	1998	80	109	02.94-04.02	*
2.0 4x4 (RFW (XU10J2U))	Gasolina	4WD	1998	80	109	08.96-04.02	*
2.0 (XU10J2)	Gasolina	FWD	1998	81	110	04.02-06.06	*
2.0 bivalent (XU10J2)	Gasol./Gas (CNG)	FWD	1998	81	110	02.03-06.06	*
1.9 D (D9B (XUD9A/U))	Diesel	FWD	1905	51	69	01.99-04.02	*
1.9 TD (D8C (XUD9UTF))	Diesel	FWD	1905	66	90	08.94-04.02	*

LISTA DE APLICACIONES - BUYERS GUIDE

1.9 TD 4x4 (D8C (XUD9UTF))		Diesel	4WD	1905	68	92	08.96-04.02	*
2.0 HDi (RHV (DW10UTD))		Diesel	FWD	1997	62	84	04.02-06.06	*
2.2 HDi (4HY (DW12UTED))		Diesel	FWD	2179	74	101	04.02-06.06	*
2.5 D (T9A (DJ5))		Diesel	FWD	2446	63	86	08.94-04.02	*
2.5 D 4x4 (T9A (DJ5))		Diesel	4WD	2446	63	86	08.96-04.02	*
2.8 D (8140.63 (F28D))		Diesel	FWD	2798	64	87	01.99-02.02	*
JUMPER II / RELAY (230) 03.94-04.02					Caja/Chasis (LCVs-N1 Segment)			
2.0 (RFW (XU10J2U))		Gasolina	FWD	1998	80	109	03.94-04.02	*
1.9 TD (DHX (XUD9TF/BTF))		Diesel	FWD	1905	66	90	03.94-04.02	*
1.9 TD (D8C (XUD9UTF))		Diesel	FWD	1905	68	92	03.94-04.02	*
2.0 HDi (RHV (DW10UTD))		Diesel	FWD	1997	62	84	04.02-06.06	*
2.2 HDi (4HY (DW12UTED))		Diesel	FWD	2179	74	101	04.02-06.06	*
2.5 D (T9A (DJ5))		Diesel	FWD	2446	63	86	03.94-04.02	*
2.5 D 4x4 (T9A (DJ5))		Diesel	4WD	2446	63	86	03.00-04.02	*
2.8 D (8140.63 (F28D))		Diesel	FWD	2798	64	87	01.99-02.02	*
2.8 HDI (8140.43N)		Diesel	FWD	2798	107	146	05.04-06.06	*
FIAT								
DUCATO II (230_) 03.94-05.05					[CAMBIADO]:Furgón (LCVs-N1 Segment)			
2.0		Gasolina	FWD	1998	74	101	06.94-12.95	*
2.0 (RFW)		Gasolina	FWD	1998	80	109	03.94-04.02	*
2.0 4x4 (RFW)		Gasolina	4WD	1998	80	109	11.94-04.02	*
1.9 D (DJY)		Diesel	FWD	1905	50	68	04.98-04.02	*
1.9 TD (DHX)		Diesel	FWD	1905	59	80	05.98-11.01	*
1.9 TD (DHX)		Diesel	FWD	1905	66	90	04.98-04.02	*
1.9 TD (DHX (XUD9TF/L))		Diesel	FWD	1905	66	90	04.98-04.02	*
1.9 D (230 A2.000)		Diesel	FWD	1929	51	69	03.94-04.02	*
1.9 TD CAT (230 A4.000)		Diesel	FWD	1929	59	80	08.94-04.02	*
1.9 TD (230 A3.000)		Diesel	FWD	1929	60	82	03.94-04.02	*
2.0 JTD (RHV)		Diesel	FWD	1997	62	84	10.01-04.02	*
2.5 TD (8140.47)		Diesel	FWD	2499	80	109	06.94-08.98	*
2.5 TD 4x4 (8140.47)		Diesel	4WD	2499	80	109	11.94-04.98	*
2.5 TD 4x4 (8140.47)		Diesel	4WD	2499	85	116	11.94-04.98	*
2.5 D (8140.67)		Diesel	FWD	2500	62	84	03.94-04.02	*
2.5 D 4x4 (8140.67)		Diesel	4WD	2500	62	84	03.94-04.02	*
2.5 TDI (8140.47R)		Diesel	FWD	2500	80	109	03.94-04.02	*
2.5 TDI (8140.47)		Diesel	FWD	2500	85	116	03.94-04.02	*
2.5 TDI 4x4 (8140.47)		Diesel	4WD	2500	85	116	05.98-04.02	*
2.8 JTD (8140.43S)		Diesel	FWD	2798	94	128	11.00-04.02	*
2.8 JTD 4x4 (8140.43S)		Diesel	4WD	2798	94	128	11.00-04.02	*
2.8 TD 4x4 (8140.43)		Diesel	4WD	2799	90	122	05.98-09.01	*
2.8 D (8140.63)		Diesel	FWD	2800	64	87	05.98-04.02	*
2.8 D 4x4 (8140.63)		Diesel	4WD	2800	64	87	08.98-04.02	*
2.8 TDI (8140.43)		Diesel	FWD	2800	90	122	10.97-04.02	*
2.8 TDI 4x4 (8140.43)		Diesel	4WD	2800	90	122	06.99-04.02	*
DUCATO II (230_) 03.94-05.05					Bus (Minibus-M2-Segment)			
2.0		Gasolina	FWD	1998	74	101	06.94-12.95	*
2.0 4x4 (RFW)		Gasolina	4WD	1998	80	109	11.94-11.01	*
2.0 Panorama/Combinato (RFW)		Gasolina	FWD	1998	80	109	03.94-04.02	*
1.9 D (DJY)		Diesel	FWD	1905	50	68	04.98-04.02	*
1.9 D (DHX)		Diesel	FWD	1905	59	80	05.98-11.01	*

LISTA DE APLICACIONES - BUYERS GUIDE

1.9 TD (DHX)		Diesel	FWD	1905	66	90	04.98-04.02	*
1.9 TD (DHX (XUD9TF/L))		Diesel	FWD	1905	66	90	04.98-04.02	*
1.9 D Combinato (230 A2.000)		Diesel	FWD	1929	51	69	06.95-04.02	*
1.9 TD Combinato (230 A4.000)		Diesel	FWD	1929	59	80	08.94-04.02	*
1.9 TD Panorama/Combinato (230 A3.000)		Diesel	FWD	1929	60	82	03.94-04.02	*
2.0 JTD (RHV)		Diesel	FWD	1997	62	84	10.01-04.02	*
2.5 D		Diesel	FWD	2499	55	75	03.94-04.02	*
2.5 TD		Diesel	FWD	2499	80	109	06.94-08.98	*
2.5 TD 4x4 (8140.47)		Diesel	4WD	2499	80	109	11.94-04.98	*
2.5 TD 4x4 (8140.47)		Diesel	4WD	2499	85	116	06.94-09.01	*
2.5 TDI Panorama/Combinato (8140.47)		Diesel	FWD	2499	85	116	03.94-04.02	*
2.5 D Combinato (8140.67)		Diesel	FWD	2500	62	84	08.94-04.02	*
2.5 TDI Panorama/Combinato (8140.47R)		Diesel	FWD	2500	80	109	07.94-04.02	*
2.5 TDI 4x4 (8140.47)		Diesel	4WD	2500	85	116	04.97-04.02	*
2.8 JTD (8140.43S)		Diesel	FWD	2798	94	128	11.00-04.02	*
2.8 JTD 4x4 (8140.43S)		Diesel	4WD	2798	94	128	11.00-04.02	*
2.8 D (8140.63)		Diesel	FWD	2800	64	87	02.98-04.02	*
2.8 TDI (8140.43)		Diesel	FWD	2800	90	122	10.97-04.02	*
2.8 TDI 4x4 (8140.43)		Diesel	4WD	2800	90	122	07.99-04.02	*
DUCATO II (230_) 03.94-04.02					Caja/Chasis (LCVs-N1 Segment)			
2.0 (RFW)		Gasolina	FWD	1998	80	109	03.94-04.02	*
2.0 4x4 (RFW)		Gasolina	4WD	1998	80	109	11.94-09.01	*
1.9 D (DJY)		Diesel	FWD	1905	50	68	04.98-04.02	*
1.9 TD (DHX)		Diesel	FWD	1905	59	80	05.98-11.01	*
1.9 TD (DHX)		Diesel	FWD	1905	66	90	04.98-04.02	*
1.9 TD (DHX (XUD9TF/L))		Diesel	FWD	1905	66	90	04.98-04.02	*
1.9 D (230 A2.000)		Diesel	FWD	1929	51	69	03.94-04.02	*
1.9 TD CAT (230 A4.000)		Diesel	FWD	1929	59	80	08.94-04.02	*
1.9 TD (230 A3.000)		Diesel	FWD	1929	60	82	03.94-04.02	*
2.0 JTD (RHV)		Diesel	FWD	1997	62	84	07.01-04.02	*
2.5 TD (8140.47)		Diesel	FWD	2499	80	109	06.94-08.98	*
2.5 TD 4x4 (8140.47)		Diesel	4WD	2499	80	109	11.94-04.98	*
2.5 TD (8140.47)		Diesel	FWD	2499	85	116	06.94-04.98	*
2.5 TD 4x4 (8140.47)		Diesel	4WD	2499	85	116	11.94-04.98	*
2.5 D (8140.67)		Diesel	FWD	2500	62	84	03.94-04.02	*
2.5 D 4x4 (8140.67)		Diesel	4WD	2500	62	84	03.94-04.02	*
2.5 TDI (8140.47R)		Diesel	FWD	2500	80	109	03.94-04.02	*
2.5 TDI		Diesel	FWD	2500	85	116	03.94-04.02	*
2.5 TDI 4x4 (8140.47)		Diesel	4WD	2500	85	116	06.98-04.02	*
2.8 JTD (8140.43S)		Diesel	FWD	2798	94	128	11.00-04.02	*
2.8 JTD		Diesel	FWD	2798	94	128	03.01-04.02	*
2.8 TD 4x4 (8140.63)		Diesel	4WD	2799	64	87	05.98-11.01	*
2.8 iDTD 4x4 (8140.43)		Diesel	4WD	2799	90	122	05.98-09.01	*
2.8 D (8140.63)		Diesel	FWD	2800	64	87	02.98-04.02	*
2.8 TDI (8140.43)		Diesel	FWD	2800	90	122	12.98-04.02	*
PEUGEOT								
BOXER II (230L) 03.94-08.06					[CAMBIADO]:Furgón (LCVs-N1 Segment)			
2.0 4x4 (RFW (XU10J2))		Gasolina	4WD	1998	80	109	03.96-09.98	*
2.0 i (RFW (XU10J2))		Gasolina	FWD	1998	80	109	06.94-04.02	*
1.9 D (DJY (XUD9A))		Diesel	FWD	1905	50	68	07.99-04.02	*

LISTA DE APLICACIONES - BUYERS GUIDE

1.9 D (D9B (XUD9AU))		Diesel	FWD	1905	51	69	03.94-04.02	*
1.9 DT 4x4 (XUD9TE)		Diesel	4WD	1905	66	90	03.96-09.98	*
1.9 TD (XUD9TE)		Diesel	FWD	1905	66	90	07.99-04.02	*
1.9 TD (D8C (XUD9UTF))		Diesel	FWD	1905	68	92	03.94-04.02	*
2.0 HDi (RHV (DW10UTD))		Diesel	FWD	1997	62	84	08.01-04.02	*
2.5 D (T9A (DJ5))		Diesel	FWD	2446	63	86	03.94-04.02	*
2.5 D 4x4 (T9A (DJ5))		Diesel	4WD	2446	63	86	07.99-04.02	*
2.5 TD (T8A (DJ5T))		Diesel	FWD	2446	76	103	03.94-03.02	*
2.5 TDI (THX (DJ5TED))		Diesel	FWD	2446	79	107	01.97-04.02	*
2.5 TDI 4x4 (THX (DJ5TED))		Diesel	4WD	2446	79	107	07.99-04.02	*
2.5 DT		Diesel	FWD	2499	62	84	10.97-11.01	*
2.8 D (8140.63 (F28D))		Diesel	FWD	2798	64	87	01.99-02.02	*
2.8 DTiC		Diesel	FWD	2798	90	122	10.97-08.05	*
2.8 HDI (8140.43S (F28DTCR))		Diesel	FWD	2798	93	126	10.00-11.01	*
2.8 HDi 4x4 (8140.43S (F28DTCR))		Diesel	4WD	2798	93	126	10.00-11.01	*
2.8 HDI (8140.43S (F28DTCR))		Diesel	FWD	2798	94	128	11.00-04.02	*
2.8 HDi 4x4 (8140.43S (F28DTCR))		Diesel	4WD	2798	94	128	10.00-04.02	*
BOXER II (230P) 03.94-12.09					Bus (Minibus-M2-Segment)			
2.0 i (RFW (XU10J2))		Gasolina	FWD	1998	80	109	03.94-04.02	*
2.0 i 4x4 (RFW (XU10J2))		Gasolina	4WD	1998	80	109	08.96-04.02	*
2.0 (RFL (XU10J2U))		Gasolina	FWD	1998	81	110	12.01-06.06	*
1.9 D (D9B (XUD9AU))		Diesel	FWD	1905	51	69	03.94-04.02	*
1.9 TD (DHY (XUD9TE))		Diesel	FWD	1905	66	90	08.94-04.02	*
1.9 TD (D8C (XUD9UTF))		Diesel	FWD	1905	68	92	03.94-04.02	*
1.9 TD 4x4 (D8C (XUD9UTF))		Diesel	4WD	1905	68	92	07.96-04.02	*
2.5 D (T9A (DJ5))		Diesel	FWD	2446	63	86	08.94-04.02	*
2.5 D 4x4 (T9A (DJ5))		Diesel	4WD	2446	63	86	07.96-04.02	*
2.5 TD (T8A (DJ5T))		Diesel	FWD	2446	76	103	07.94-12.97	*
2.5 TD 4x4 (T8A (DJ5T))		Diesel	4WD	2446	76	103	07.96-04.02	*
2.5 TDI (THX (DJ5TED))		Diesel	FWD	2446	79	107	01.97-04.02	*
2.5 TDI 4x4 (THX (DJ5TED))		Diesel	4WD	2446	79	107	01.97-04.02	*
2.5 DT		Diesel	FWD	2499	62	84	10.97-11.01	*
2.8 D (8140.63 (F28D))		Diesel	FWD	2798	64	87	01.99-02.02	*
2.8 DTiC		Diesel	FWD	2798	90	122	10.97-09.00	*
2.8 HDI (8140.43S (F28DTCR))		Diesel	FWD	2798	93	126	10.00-11.01	*
2.8 HDi A las 4 ruedas (8140.43S (F28DTCR))		Diesel	4WD	2798	93	126	10.00-11.01	*
2.8 HDI (8140.43S (F28DTCR))		Diesel	FWD	2798	94	128	11.00-04.02	*
2.8 HDi 4x4 (8140.43S (F28DTCR))		Diesel	4WD	2798	94	128	10.00-04.02	*
BOXER II (ZCT_) 03.94-04.02					Caja/Chasis (LCVs-N1 Segment)			
2.0 i (RFW (XU10J2))		Gasolina	FWD	1998	80	109	06.94-04.02	*
2.0 (RFL (XU10J2U))		Gasolina	FWD	1998	81	110	12.01-04.02	*
1.9 D (DJY (XUD9A))		Diesel	FWD	1905	51	69	03.94-04.02	*
1.9 TD (DHY (XUD9TE))		Diesel	FWD	1905	66	90	06.94-04.02	*
1.9 TD (XUD9TE)		Diesel	FWD	1905	66	90	06.94-04.02	*
1.9 TD (D8C (XUD9UTF))		Diesel	FWD	1905	68	92	07.94-04.02	*
1.9 TD (XUD9TE)		Diesel	FWD	1905	68	92	07.94-04.02	*
2.5 D (T9A (DJ5))		Diesel	FWD	2446	63	86	03.94-04.02	*
2.5 D 4x4 (T9A (DJ5))		Diesel	4WD	2446	63	86	07.99-04.02	*
2.5 TD (T8A (DJ5T))		Diesel	FWD	2446	76	103	03.94-12.97	*
2.5 TDI (THX (DJ5TED))		Diesel	FWD	2446	79	107	01.97-04.02	*
2.5 TDI 4x4 (THX (DJ5TED))		Diesel	4WD	2446	79	107	07.99-04.02	*

LISTA DE APLICACIONES - BUYERS GUIDE

2.8 D (8140.63 (F28D))	Diesel	FWD	2798	64	87	01.99-02.02	*
2.8 HDI (8140.43S (F28DTCR))	Diesel	FWD	2798	93	126	10.00-11.01	*
2.8 HDi A las 4 ruedas (8140.43S (F28DTCR))	Diesel	4WD	2798	93	126	10.00-11.01	*
2.8 HDI (8140.43S (F28DTCR))	Diesel	FWD	2798	94	128	11.00-04.02	*