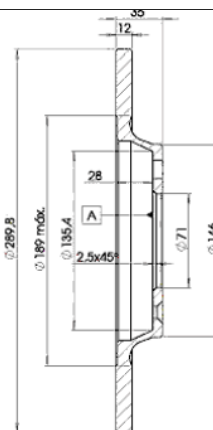


78RBD24609



Weight: 10.072

O.E.M.	MAKE
4246.P9	PEUGEOT
4249.14	PEUGEOT
4249.72	CITROËN
4249-C1	PEUGEOT



78RBD24609

E1 90R-02C0415/0014



Ø290x12x35

Sin Filas



Trac.	CC	Kw	CV
-------	----	----	----



Front / Rear

CITROËN

C5 II (RW_) 02.08-					[CAMBIADO]:Break (Large family car-D Segment)			
1.8 i 16V (RW6FYC) (6FY (EW7A))		Gasolina	FWD	1749	92	125	02.08-10.10	*
2.0 i 16V (RWRFJC, RWRFJF) (RFJ (EW10A))		Gasolina	FWD	1997	103	140	02.08-10.14	*
3.0		Gasolina	FWD	2946	152	207	02.08-	*
3.0 V6 (RWXFVA, RWXFUA) (XFU (ES9A))		Gasolina	FWD	2946	155	211	02.08-12.10	*
3.0 V6 (RWXFVA, RWXFUA) (XFV (ES9A))		Gasolina	FWD	2946	155	211	02.08-12.10	*
2.0 16V BioFlex (RFJ (EW10A))		Gasol./Etanol	FWD	1997	103	140	02.08-06.10	*
1.6 HDi 110 (RW9HZC) (9HZ (DV6TED4))		Diesel	FWD	1560	80	109	02.08-10.10	*
2.0 HDi (RHR (DW10BTED4))		Diesel	FWD	1997	100	136	02.08-06.14	*
2.0 HDi 180 (AHW (DW10FC))		Diesel	FWD	1997	133	181	03.15-05.17	*
2.2 HDi 165 (4HP (DW12BTED4))		Diesel	FWD	2179	120	163	02.08-08.09	*
2.2 HDi (RW4HTH) (4HT (DW12BTED4))		Diesel	FWD	2179	125	170	02.08-12.11	*
2.2 HDi 200 (4HL (DW12C))		Diesel	FWD	2179	150	204	07.10-06.15	*
2.7 HDi (UHZ (DT17TED4))		Diesel	FWD	2720	150	204	02.08-10.09	*
3.0 HDi 240 (RWX8CA) (DT20C)		Diesel	FWD	2992	177	241	04.09-10.14	*
C5 II (RD_) 02.08-					Sedán (Large family car-D Segment)			
1.6 (RD5FMA) (5FM (EP6DT))		Gasolina	FWD	1598	120	163	03.11-06.14	*
1.8 16V (RD6FXC) (6FY (EW7A))		Gasolina	FWD	1749	92	125	02.08-10.10	*
2.0 16V (RDRFJC, RDRFJF) (RFJ (EW10A))		Gasolina	FWD	1997	103	140	02.08-10.14	*
3.0		Gasolina	FWD	2946	152	207	02.08-	*
3.0 V6 (RDXFVJ) (XFU (ES9A))		Gasolina	FWD	2946	155	211	02.08-12.10	*
3.0 V6 (RDXFVJ) (XFV (ES9A))		Gasolina	FWD	2946	155	211	02.08-12.10	*
2.0 16V BioFlex (RDRFJF) (RFJ (EW10A))		Gasol./Etanol	FWD	1997	103	140	02.08-12.12	*

# LISTA DE APLICACIONES - BUYERS GUIDE

1.6 HDi 110 (RD9HZC) (9HZ (DV6TED4))	Diesel	FWD	1560	80	109	02.08-10.10	*
2.0 HDi (RDRHD8, RDRHDJ, RDRHR8, RDRHRJ) (RHF (DW10BTED4))	Diesel	FWD	1997	100	136	02.08-06.14	*
2.0 HDi (RDRHD8, RDRHDJ, RDRHR8, RDRHRJ) (RHR (DW10BTED4))	Diesel	FWD	1997	100	136	02.08-06.14	*
2.0 HDi (RDRHR8) (RHR (DW10BTED4))	Diesel	FWD	1997	101	138	10.14-05.17	*
2.0 HDi 180 (RDAHWT) (AHW (DW10FC))	Diesel	FWD	1997	133	181	03.15-05.17	*
2.2 HDi (RD4HTH, RD4HPH, RD4HRH, RD4HSH) (4HP (DW12BTED4))	Diesel	FWD	2179	120	163	04.09-12.11	*
2.2 HDi (RD4HTH, RD4HPH, RD4HRH, RD4HSH) (4HR (DW12BTED4))	Diesel	FWD	2179	120	163	04.09-12.11	*
2.2 HDi (RD4HTH) (4HT (DW12BTED4))	Diesel	FWD	2179	125	170	02.08-12.11	*
2.2 HDi 200 (RD4HLA) (4HL (DW12C))	Diesel	FWD	2179	150	204	07.10-06.15	*
2.7 HDi (RDUHZJ) (UHZ (DT17TED4))	Diesel	FWD	2720	150	204	02.08-12.09	*
3.0 HDi 240 (RDX8CA) (DT20C)	Diesel	FWD	2992	177	241	04.09-10.14	*
<b>C6 (TD_) 09.05-</b>				<b>Sedán (Executive car-E Segment)</b>			
3.0 V6 (XfV (ES9A))	Gasolina	FWD	2946	155	211	09.05-12.12	*
3.0 V6 (XfX (ES9J4S))	Gasolina	FWD	2946	155	211	09.05-12.12	*
2.2 HDi (4HT (DW12BTED4))	Diesel	FWD	2179	125	170	06.06-12.12	*
2.7 HDi (UHZ (DT17TED4))	Diesel	FWD	2720	150	204	09.05-12.11	*
<b>PEUGEOT</b>							
<b>407 (6C_) 10.05-</b>				<b>Coupé (Large family car-D Segment)</b>			
2.2 16V (3FY (EW12J4))	Gasolina	FWD	2230	120	163	10.05-	*
3.0 V6 (XfV (ES9A))	Gasolina	FWD	2946	155	211	10.05-	*
2.0 HDi (RHR (DW10BTED4))	Diesel	FWD	1997	100	136	10.05-	*
2.0 HDi (RHH (DW10CTED4))	Diesel	FWD	1997	120	163	06.09-	*
2.7 HDi (UHZ (DT17TED4))	Diesel	FWD	2720	150	204	10.05-	*
3.0 HDi (DT20C)	Diesel	FWD	2992	177	241	06.09-	*
<b>407 (6D_) 02.04-12.11</b>				<b>Sedán (Large family car-D Segment)</b>			
1.8 (6D6FZB) (6FZ (EW7J4))	Gasolina	FWD	1749	85	116	03.04-07.05	*
1.8 16V (6D6FYC) (6FY (EW7A))	Gasolina	FWD	1749	92	125	08.05-12.10	*
2.0 (6DRFNB, 6DRFNE) (RFN (EW10J4))	Gasolina	FWD	1997	100	136	03.04-07.05	*
2.0 16V (6DRFJC, 6DRFJE, 6DRFJF) (RFJ (EW10A))	Gasolina	FWD	1997	103	140	09.05-12.10	*
2.2 (6D3FZE, 6D3FZH) (3FZ (EW12J4))	Gasolina	FWD	2230	116	158	03.04-10.06	*
2.2 16V (6D3FYH, 6D3FYE) (3FY (EW12J4))	Gasolina	FWD	2230	120	163	08.05-12.10	*
3.0 (6DXFVJ) (XfV (ES9A))	Gasolina	FWD	2946	155	211	03.04-12.10	*
3.0 V6 (6DXFVJ)	Gasolina	FWD	2946	158	215	11.05-10.10	*
2.0 Flex (6DRFJB) (RFJ (EW10A))	Gasol./Etanol	FWD	1997	103	140	10.05-02.11	*
1.6 HDi 110 (6D9HZC, 6D9HYC) (9HZ (DV6TED4))	Diesel	FWD	1560	80	109	05.04-12.10	*
2.0 HDi 135 (6DRHRH, 6DRHRE, 6DRHRG, 6DRHRJ) (RHR (DW10BTED4))	Diesel	FWD	1997	100	136	05.04-10.10	*
2.0 HDi (6DRHRH) (RHR (DW10BTED4))	Diesel	FWD	1997	103	140	06.09-12.10	*
2.0 HDi (6DRHHA) (RHH (DW10CTED4))	Diesel	FWD	1997	120	163	06.09-12.10	*
2.2 HDi (6D4HPH) (4HP (DW12BTED4))	Diesel	FWD	2179	120	163	03.06-12.10	*
2.2 HDi 170 (6D4HTH) (4HT (DW12BTED4))	Diesel	FWD	2179	125	170	03.06-12.10	*
2.7 HDi (6DUHZJ, 6DUHZF) (UHZ (DT17TED4))	Diesel	FWD	2720	150	204	10.05-12.10	*
<b>407 SW (6E_, 6D_) 05.04-</b>				<b>[CAMBIADO]:Break (Large family car-D Segment)</b>			
1.8 (6FZ (EW7J4))	Gasolina	FWD	1749	85	116	05.04-07.05	*
1.8 16V (6FY (EW7A))	Gasolina	FWD	1749	92	125	08.05-12.10	*
2.0 (RFN (EW10J4))	Gasolina	FWD	1997	100	136	05.04-07.05	*
2.0 16V (RFJ (EW10A))	Gasolina	FWD	1997	103	140	08.05-12.10	*

# LISTA DE APLICACIONES - BUYERS GUIDE

2.2 (3FZ (EW12J4))	Gasolina	FWD	2230	116	158	05.04-07.05	*
2.2 16V (3FY (EW12J4))	Gasolina	FWD	2230	120	163	08.05-12.10	*
3.0 (XFV (ES9A))	Gasolina	FWD	2946	155	211	05.04-12.10	*
2.0 Bioflex (RFJ (EW10A))	Gasol./Etanol	FWD	1997	103	140	01.08-12.10	*
1.6 HDi 110 (9HZ (DV6TED4))	Diesel	FWD	1560	80	109	05.04-12.10	*
2.0 HDi 135 (RHR (DW10BTED4))	Diesel	FWD	1997	100	136	07.04-12.10	*
2.0 HDi (RHR (DW10BTED4))	Diesel	FWD	1997	103	140	08.08-12.10	*
2.0 HDi (RHH (DW10CTED4))	Diesel	FWD	1997	120	163	06.09-12.10	*
2.2 HDi (4HP (DW12BTED4))	Diesel	FWD	2179	120	163	06.08-12.10	*
2.2 HDi 170 (4HT (DW12BTED4))	Diesel	FWD	2179	125	170	03.06-12.10	*
2.7 HDi (UHZ (DT17TED4))	Diesel	FWD	2720	150	204	10.05-12.10	*
<b>407 SW (6E_) 08.04-12.10</b>					<b>[CAMBIADO]:Furgón/Break (Large family car-D Segment)</b>		
2.0 HDi (RHH (DW10CTED4))	Diesel	FWD	1997	120	163	06.09-12.10	*
<b>607 (9D, 9U) 01.00-</b>					<b>Sedán (Executive car-E Segment)</b>		
2.2 HDi (4HX (DW12TED4))	Diesel	FWD	2179	98	133	02.00-02.06	*
2.2 HDi (4HT (DW12BTED4))	Diesel	FWD	2179	125	170	05.06-06.10	*
2.7 HDi 24V (DT17TED4)	Diesel	FWD	2721	150	204	12.04-07.11	*
<b>RCZ 03.10-</b>					<b>Coupé (Compact car-C Segment)</b>		
1.6 THP 150 (5FE (EP6CDTMD))	Gasolina	FWD	1598	110	150	03.11-12.15	*
1.6 16V (5FV (EP6CDT))	Gasolina	FWD	1598	115	156	03.10-12.15	*
1.6 16V (5FM (EP6CDTM))	Gasolina	FWD	1598	121	165	01.11-12.15	*
1.6 16V (EP6CDTX)	Gasolina	FWD	1598	147	200	06.10-12.15	*
1.6 16V (EP6CDTX)	Gasolina	FWD	1598	150	204	06.10-12.15	*
1.6 THP 270 (5FG (EP6CDTR))	Gasolina	FWD	1598	199	270	06.13-12.15	*
2.0 HDi (RHH (DW10CTED4))	Diesel	FWD	1997	120	163	03.10-12.15	*