

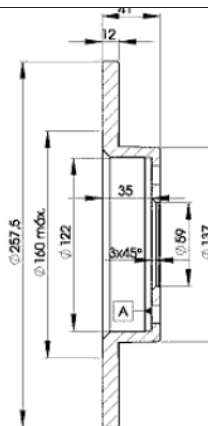
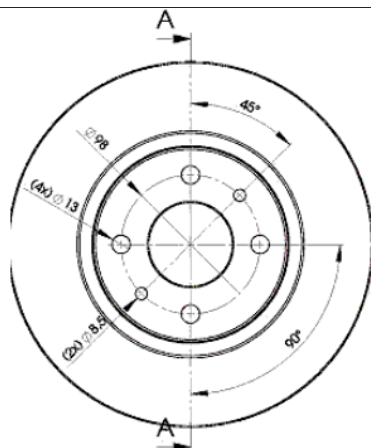
# LISTA DE APLICACIONES - BUYERS GUIDE

## 78RBD23466



Weight: 8.956

O.E.M.	MAKE
4 655 430 2	LANCIA
4 682 065 5	LANCIA
6 080 88 72	ALFA ROMEO
7 173 837 3	FIAT
7 545 556	FIAT
7 645 055	FIAT
7 645 556	FIAT
7 663 466	LANCIA
9 249 860 9	FIAT
9 663 465	FIAT



## 78RBD23466

E1 90R-02C0415/0017



Ø257x12x40.5

Sin Filas



Trac.	CC	Kw	CV	
				Front / Rear

### ALFA ROMEO

#### 145 (3 door) (930\_) 07.94-01.01

[CAMBIADO]:Fastback (Compact car-C Segment)

1.4 i.e. (930.A3) (AR 33501)	Gasolina	FWD	1351	66	90	07.94-12.96	*
1.6 i.e. (930.A2) (AR 33201)	Gasolina	FWD	1596	76	103	10.94-12.96	*
1.9 TD (930.A4) (AR 33601)	Diesel	FWD	1929	66	90	10.94-02.99	*
1.9 TD (930.A4) (AR 67501)	Diesel	FWD	1929	66	90	10.94-02.99	*
1.9 D	Diesel	RWD	1929	68	92	07.94-02.99	*

#### 146 (5 door) (930\_) 12.94-10.01

[CAMBIADO]:Fastback (Compact car-C Segment)

1.4 i.e. (930.B3) (AR 33501)	Gasolina	FWD	1351	66	90	12.94-12.96	*
1.6 i.e. (930.B2) (AR 33201)	Gasolina	FWD	1596	76	103	12.94-12.96	*
1.9 TD (930.B4A) (AR 33601)	Diesel	FWD	1929	66	90	12.94-02.99	*
1.9 TD (930.B4A) (AR 67501)	Diesel	FWD	1929	66	90	12.94-02.99	*
1.9 D	Diesel	RWD	1929	68	92	05.95-09.96	*

#### 155 (167\_) 01.92-12.97

Sedán (Compact executive car-D Segment)

1.9 TD (167.A3B, 167.A3) (AR 67501)	Diesel	FWD	1929	66	90	04.93-12.97	*
-------------------------------------	--------	-----	------	----	----	-------------	---

### CHRYSLER

#### YPSILON 05.11-

[CAMBIADO]:Fastback (Supermini car-B Segment)

1.2 (169 A4.000)	Gasolina	FWD	1242	51	69	05.11-12.21	*
------------------	----------	-----	------	----	----	-------------	---

### FIAT

#### 500 II (312\_) 07.07-

[CAMBIADO]:Fastback (City car-A Segment)

0.9 (312AXN1A) (312 A5.000)	Gasolina	FWD	875	59	80	12.13-	*
0.9 (312AXG1A, 312.AXG11) (312 A2.000)	Gasolina	FWD	875	63	86	07.10-	*

# LISTA DE APLICACIONES - BUYERS GUIDE

0.9 (312AXP1A) (312 A4.000)		Gasolina	FWD	964	44	60	12.13-	*
0.9 (312AXP1A) (312 A6.000)		Gasolina	FWD	964	44	60	12.13-	*
0.9 (312AXH1A) (312 A4.000)		Gasolina	FWD	964	48	65	09.12-	*
1.2 LPG (312AXA1A) (169 A4.000)		Gasol./Gas (LPG)	FWD	1242	51	69	12.10-	*
<b>500 C II (312_) 09.09-</b>					<b>Cabrio (City car-A Segment)</b>			
0.9 (312AXN1A, 312AXN11) (312 A5.000)		Gasolina	FWD	875	59	80	12.13-	*
0.9 (312AG1A) (312 A2.000)		Gasolina	FWD	875	63	86	09.09-	*
0.9 (312AXP1A) (312 A6.000)		Gasolina	FWD	964	44	60	12.13-	*
0.9 (312AXH1A) (312 A4.000)		Gasolina	FWD	964	48	65	09.12-	*
1.2 (312CXA1A, 312AXA1A) (169 A4.000)		Gasolina	FWD	1242	51	69	09.09-	*
<b>BRAVA II (182_) 10.95-06.03</b>					<b>[CAMBIADO]:Fastback (Compact car-C Segment)</b>			
1.2 16V 80 (188 A5.000)		Gasolina	FWD	1242	59	80	10.00-10.01	*
1.2 16V 80 (182 B2.000)		Gasolina	FWD	1242	60	82	12.98-12.02	*
1.4 (182.BG) (182 A5.000)		Gasolina	FWD	1370	55	75	10.95-10.01	*
1.4 12 V (182.BA) (182 A3.000)		Gasolina	FWD	1370	59	80	10.95-08.98	*
1.6 16V (182.BH) (182 A6.000)		Gasolina	FWD	1581	66	90	10.95-10.01	*
1.6 16V (182.BB) (182 A4.000)		Gasolina	FWD	1581	76	103	02.96-10.01	*
1.6 16V (182.BB)		Gasolina	FWD	1581	78	106	08.99-03.00	*
1.6 16V (182.BU) (182 B6.000)		Gasolina	FWD	1596	76	103	01.99-12.02	*
1.9 TD 75 S (182.BF) (182 A8.000)		Diesel	FWD	1910	55	75	03.96-10.01	*
1.9 D (160 A7.000)		Diesel	FWD	1929	48	65	10.95-10.01	*
<b>BRAVO (182_) 10.95-10.01</b>					<b>[CAMBIADO]:Fastback (Compact car-C Segment)</b>			
1.2 16V 80 (188 A5.000)		Gasolina	FWD	1242	59	80	10.00-10.01	*
1.2 16V 80 (182 B2.000)		Gasolina	FWD	1242	60	82	12.98-10.00	*
1.4 (182.AG) (182 A5.000)		Gasolina	FWD	1370	55	75	10.95-10.01	*
1.4 (182.AA) (182 A3.000)		Gasolina	FWD	1370	59	80	10.95-10.01	*
1.6 16V (182.AH) (182 A6.000)		Gasolina	FWD	1581	66	90	10.95-10.01	*
1.6 16V (182.AB) (182 A4.000)		Gasolina	FWD	1581	76	103	03.96-10.01	*
1.6 (182 B6.000)		Gasolina	FWD	1596	76	103	09.00-10.01	*
1.9 TD 75 S (182.AF) (182 A8.000)		Diesel	FWD	1910	55	75	03.96-10.01	*
1.9 D (160 A7.000)		Diesel	FWD	1929	48	65	10.95-10.01	*
<b>MAREA (185_) 05.96-12.07</b>					<b>Sedán (Large family car-D Segment)</b>			
1.4 80 12V (182 A3.000)		Gasolina	FWD	1370	59	80	09.96-05.02	*
1.6 16V (185 A3.000)		Gasolina	FWD	1581	75	102	04.97-02.99	*
1.9 TD 75 (182 A8.000)		Diesel	FWD	1910	55	75	09.96-05.02	*
1.9 JTD 105 (185AXN1A) (182 B4.000)		Diesel	FWD	1910	77	105	12.98-12.02	*
<b>MAREA Weekend (185_) 09.96-12.07</b>					<b>[CAMBIADO]:Break (Large family car-D Segment)</b>			
1.4 80 12V (182 A3.000)		Gasolina	FWD	1370	59	80	09.96-05.02	*
1.9 TD 75 (182 A8.000)		Diesel	FWD	1910	55	75	09.96-05.02	*
1.9 JTD 105 (185BXN1A) (182 B4.000)		Diesel	FWD	1910	77	105	12.98-12.02	*
<b>PANDA III (312_, 319_) 02.12-</b>					<b>[CAMBIADO]:Fastback (City car-A Segment)</b>			
0.9 (312PXM1A, 312PXM11) (312 A5.000)		Gasolina	FWD	875	59	80	12.13-	*
0.9 4x4 (312PXR2B) (312 A2.000)		Gasolina	4WD	875	66	90	06.14-	*
0.9 4x4 (312PXR2B) (312 A7.000)		Gasolina	4WD	875	66	90	06.14-	*
0.9 (312PXP1A) (312 A4.000)		Gasolina	FWD	964	44	60	12.13-	*
0.9 (312PXP1A) (312 A6.000)		Gasolina	FWD	964	44	60	12.13-	*
0.9 (312PXH1A) (312 A4.000)		Gasolina	FWD	964	48	65	02.12-	*
1.2 (312PXA1A) (169 A4.000)		Gasolina	FWD	1242	51	69	02.12-	*

# LISTA DE APLICACIONES - BUYERS GUIDE

0.9 Natural Power (312PXN1A) (463 37 566)		Gasol./Gas (CNG)	FWD	875	51	69	03.19-	*
0.9 Natural Power (312PXN1A) (312 A2.000)		Gasol./Gas (CNG)	FWD	875	59	80	01.15-	*
1.3 D Multijet 4x4 (312PXU1A) (199 A9.000)		Diesel	4WD	1248	59	80	06.14-	*
1.3 D Multijet 4x4 (312PXU1A) (225 A2.000)		Diesel	4WD	1248	59	80	06.14-	*
1.3 D Multijet 4x4 (312PXU1A) (312 A8.000)		Diesel	4WD	1248	59	80	06.14-	*
1.3 D Multijet 4x4 (312PXU1A) (312 B2.000)		Diesel	4WD	1248	59	80	06.14-	*
1.3 D Multijet 4x4 (312PXU1A) (199 B1.000)		Diesel	4WD	1248	70	95	04.15-	*
1.3 D Multijet 4x4 (312PXU1A) (312 B1.000)		Diesel	4WD	1248	70	95	04.15-	*
1.3 D Multijet 4x4 (312PXU1A) (330 A1.000)		Diesel	4WD	1248	70	95	04.15-	*
<b>PANDA III VAN (312_, 519_) 02.12-</b>					<b>Furgón/hatchback (LCVs-N1 Segment)</b>			
0.9 (312.PXN1A) (312 A2.000)		Gasolina	FWD	875	59	80	11.13-	*
0.9 (312DXG1A) (312 A2.000)		Gasolina	FWD	875	63	86	02.12-	*
0.9 4x4 (312CXG2B) (312 A2.000)		Gasolina	4WD	875	63	86	09.12-	*
0.9 (312CXH1A, 312DXH1A) (312 A4.000)		Gasolina	FWD	964	48	65	02.12-	*
1.2 (312CXA1A, 312DXA1A) (169 A4.000)		Gasolina	FWD	1242	51	69	02.12-	*
1.2 LPG (312CXA1A) (169 A4.000)		Gasol./Gas (LPG)	FWD	1242	51	69	06.12-	*
0.9 Natural Power (312CXG1A) (312 A2.000)		Gasol./Gas (CNG)	FWD	875	59	80	01.15-	*
0.9 Natural Power (312DXG1A) (312 A2.000)		Gasol./Gas (CNG)	FWD	875	63	86	07.12-	*
1.3 D Multijet 4x4 (312CXL2A) (199 A9.000)		Diesel	4WD	1248	55	75	06.12-	*
1.3 D Multijet 4x4 (312PXU1A) (225 A2.000)		Diesel	4WD	1248	59	80	06.14-	*
<b>PUNTO (176_) 09.93-09.99</b>					<b>[CAMBIADO]:Fastback (Supermini car-B Segment)</b>			
55 1.1 (176 A6.000)		Gasolina	FWD	1108	40	54	09.93-09.99	*
55 1.1 (176 B2.000)		Gasolina	FWD	1108	40	54	09.93-09.99	*
60 1.2 (176 A7.000)		Gasolina	FWD	1242	43	58	01.94-09.99	*
60 1.2 (176AP, 176AR, 176AQ, 176BB) (176 B1.000)		Gasolina	FWD	1242	44	60	09.93-09.99	*
60 1.2 (176AP, 176AR, 176AQ, 176BB) (176 B4.000)		Gasolina	FWD	1242	44	60	09.93-09.99	*
75 1.2 (176 A8.000)		Gasolina	FWD	1242	54	73	10.93-09.99	*
1.2 16V (176 B9.000)		Gasolina	FWD	1242	63	86	04.97-09.99	*
1.6 (176 A9.000)		Gasolina	FWD	1581	65	88	01.94-04.97	*
1.7 TD (176AT) (176 B7.000)		Diesel	FWD	1698	46	63	09.96-09.99	*
1.7 TD (176 A3.000)		Diesel	FWD	1698	51	69	01.94-09.99	*
1.7 TD (176 A5.000)		Diesel	FWD	1698	52	71	01.94-09.99	*
<b>PUNTO (176_) 04.94-06.00</b>					<b>Cabrío (Supermini car-B Segment)</b>			
85 16V 1.2 (176 B9.000)		Gasolina	FWD	1242	63	86	04.97-06.00	*
90 1.6 (176 A9.000)		Gasolina	FWD	1581	65	88	04.94-04.97	*
<b>PUNTO (176_) 04.96-02.00</b>					<b>Furgón/hatchback (LCVs-N1 Segment)</b>			
1.7 TD (176 B7.000)		Diesel	FWD	1698	46	63	09.96-09.99	*
1.7 TD (176 A5.000)		Diesel	FWD	1698	52	71	04.96-02.00	*
<b>PUNTO II (188_) 09.99-07.12</b>					<b>[CAMBIADO]:Fastback (Supermini car-B Segment)</b>			
1.2 16V 80 (188.233, .235, .253, .255, .333, .353, .639,...) (188 A5.000)		Gasolina	FWD	1242	59	80	09.99-04.06	*
1.9 DS 60 (188.031, .051, .231, .251) (188 A3.000)		Diesel	FWD	1910	44	60	09.99-03.12	*

# LISTA DE APLICACIONES - BUYERS GUIDE

PUNTO II-III (188_) 02.00-12.10					Furgón/hatchback (LCVs-N1 Segment)			
1.9 D 60 (188 A3.000)	Diesel	FWD	1910		44	60	02.00-10.09	*
TEMPRA (159_) 03.90-12.98					Sedán (Large family car-D Segment)			
1.6 i.e. (159.AS, 159.AT) (159 A3.048)	Gasolina	FWD	1581		55	75	06.92-08.96	*
1.6 i.e. (159.AS, 159.AT) (835 C1.000)	Gasolina	FWD	1581		55	75	06.92-08.96	*
1.6 i.e. (159.AE) (159 A3.046)	Gasolina	FWD	1581		57	78	06.90-07.92	*
1.6 i.e. (159.AJ) (159 B9.000)	Gasolina	FWD	1581		66	90	06.94-08.96	*
1.8 i.e. (159.AZ) (835 C4.000)	Gasolina	FWD	1756		66	90	09.93-08.96	*
1.8 i.e. (159.BY) (836 A5.000)	Gasolina	FWD	1756		74	101	10.94-08.96	*
1.8 i.e. (159.AV) (835 C2.000)	Gasolina	FWD	1756		76	103	09.93-08.96	*
1.8 i.e. (159.AN) (159 A4.046)	Gasolina	FWD	1756		77	105	03.92-08.96	*
1.8 i.e. (159.AN) (159 A4.000)	Gasolina	FWD	1756		81	110	03.90-08.96	*
2.0	Gasolina	FWD	1995		71	99	11.92-04.94	*
2.0	Gasolina	FWD	1995		76	103	05.94-12.98	*
2.0 16V	Gasolina	FWD	1995		97	132	01.94-06.98	*
2.0 Turbo	Gasolina	FWD	1995		121	165	11.94-05.98	*
2.0	Gasolina	FWD	1998		93	126	10.95-12.98	*
1.9 D (159.AG) (149 A1.000)	Diesel	FWD	1929		48	65	07.91-08.96	*
1.9 D (159.AG) (160 A7.000)	Diesel	FWD	1929		48	65	07.91-08.96	*
1.9 TD (159.AQ) (160 B6.046)	Diesel	FWD	1929		59	80	07.92-08.96	*
1.9 TD (159.CU, 159.AU, 159.AI, 159.BI) (160 A6.000)	Diesel	FWD	1929		66	90	05.90-08.96	*
1.9 TD (159.CU, 159.AU, 159.AI, 159.BI) (160 D1.000)	Diesel	FWD	1929		66	90	05.90-08.96	*
TEMPRA / MARENGO (159_) 04.90-07.96					[CAMBIADO]:Furgón/Break (Large family car-D Segment)			
1.9 TD (159AI, 159BI)	Diesel	FWD	1929		66	90	04.90-07.96	*
TEMPRA S.W (159_) 03.90-10.97					[CAMBIADO]:Break (Large family car-D Segment)			
1.4 i.e. (159.AC, 159.AX) (159 A2.000)	Gasolina	FWD	1372		51	69	10.92-08.96	*
1.4 i.e. (159.AC, 159.AX) (160 A1.046)	Gasolina	FWD	1372		51	69	10.92-08.96	*
1.4 i.e. (159.AC, 159.AX) (836 A4.000)	Gasolina	FWD	1372		51	69	10.92-08.96	*
1.4 i.e. (159.AC) (159 A2.000)	Gasolina	FWD	1372		57	78	03.91-08.96	*
1.6 (159 A3.048)	Gasolina	FWD	1581		51	69	07.93-07.96	*
1.6 i.e. (159.AS, 159.AT) (159 A3.048)	Gasolina	FWD	1581		55	75	10.92-08.96	*
1.6 i.e. (159.AS, 159.AT) (835 C1.000)	Gasolina	FWD	1581		55	75	10.92-08.96	*
1.6 i.e. (159.AE) (159 A3.046)	Gasolina	FWD	1581		57	78	10.90-08.96	*
1.6 i.e. (159.AE) (835 C1.000)	Gasolina	FWD	1581		57	78	10.90-08.96	*
1.6 (159 A3.000)	Gasolina	FWD	1581		63	86	12.90-04.93	*
1.6 i.e. (159.AJ) (159 B9.000)	Gasolina	FWD	1581		66	90	06.94-08.96	*
TIPO (160_) 07.87-10.97					[CAMBIADO]:Fastback (Compact car-C Segment)			
1.4 i.e. (160.AP, 160.AD, 160.EA) (160 A1.046)	Gasolina	FWD	1372		51	70	05.89-04.95	*
1.4 i.e. (160.AP, 160.AD, 160.EA) (160 A1.048)	Gasolina	FWD	1372		51	70	05.89-04.95	*
1.4 i.e. (160.AP, 160.AD, 160.EA) (836 A4.000)	Gasolina	FWD	1372		51	70	05.89-04.95	*
1.6 i.e. (160.A1, 160.EC, 160.EB) (159 A3.048)	Gasolina	FWD	1581		55	75	10.92-04.95	*
1.6 i.e. (160.A1, 160.EC, 160.EB) (835 C1.000)	Gasolina	FWD	1581		55	75	10.92-04.95	*
1.6 (159 A3.046)	Gasolina	FWD	1581		56	76	03.93-10.95	*
1.6 (159 A3.048)	Gasolina	FWD	1581		56	76	03.93-10.95	*
1.6 (835 C1.000)	Gasolina	FWD	1581		56	76	03.93-10.95	*
1.6 i.e. (160.AF) (159 A3.046)	Gasolina	FWD	1581		57	78	07.90-01.93	*
1.6 (160 A2.000)	Gasolina	FWD	1581		58	79	03.88-10.92	*
1.6 (160.AE) (160 A2.000)	Gasolina	FWD	1581		61	83	01.88-10.91	*

# LISTA DE APLICACIONES - BUYERS GUIDE

1.6 SX DGT (159 A3.000)		Gasolina	FWD	1581	66	90	05.89-10.95	*
1.6 i.e. (149 C2.046)		Gasolina	FWD	1595	66	90	02.88-05.91	*
1.8 i.e. (835 C4.000)		Gasolina	FWD	1756	66	90	09.93-04.95	*
1.8 i.e (836 A5.000)		Gasolina	FWD	1756	71	97	03.93-04.95	*
1.9 D (149 A1.000)		Diesel	FWD	1929	48	65	07.91-08.95	*
1.9 D (160 A7.000)		Diesel	FWD	1929	48	65	07.91-08.95	*
1.9 TD (160.AW) (160 B6.046)		Diesel	FWD	1929	59	80	03.92-06.93	*
1.9 TD (160.EL, 160.GL, 160.AQ, 160.EI, 160.AR) (160 A6.000)		Diesel	FWD	1929	66	90	09.90-04.95	*
1.9 TD (160.EL, 160.GL, 160.AQ, 160.EI, 160.AR) (160 A6.046)		Diesel	FWD	1929	66	90	09.90-04.95	*
1.9 TD (160.EL, 160.GL, 160.AQ, 160.EI, 160.AR) (160 D1.000)		Diesel	FWD	1929	66	90	09.90-04.95	*
1.9 TD (160AR) (160 A6.046)		Diesel	FWD	1929	69	94	04.90-10.92	*
<b>LANCIA</b>								
<b>DEDRA (835_) 01.89-07.99</b>					<b>Sedán (Large family car-D Segment)</b>			
1.6 i.e. (835AN) (835 C1.000)		Gasolina	FWD	1581	55	75	04.93-07.99	*
1.6 i.e. (835AB) (835 A1.046)		Gasolina	FWD	1581	57	78	08.89-03.93	*
1.6 i.e. (835AA) (835 A1.000)		Gasolina	FWD	1581	66	90	08.89-06.94	*
1.6 LE Cat (835EB) (159 B9.000)		Gasolina	FWD	1581	66	90	07.94-07.99	*
1.6 16V (835EI) (182 A4.000)		Gasolina	FWD	1581	76	103	01.96-07.99	*
1.8 i.e. (835AT) (835 C5.000)		Gasolina	FWD	1756	66	90	08.93-07.99	*
1.8 i.e. (835AC, 835BC) (835 A2.000)		Gasolina	FWD	1756	80	109	09.89-06.94	*
1.9 TDS (835EE, 835EF) (160 D1.000)		Diesel	FWD	1929	66	90	04.89-07.99	*
1.9 TDS (835EE, 835EF) (835 A4.000)		Diesel	FWD	1929	66	90	04.89-07.99	*
1.9 TDS (835EE, 835EF) (835 A4.046)		Diesel	FWD	1929	66	90	04.89-07.99	*
<b>DEDRA SW (835_) 07.94-07.99</b>					<b>[CAMBIADO]:Break (Large family car-D Segment)</b>			
1.6 (835EB) (159 B9.000)		Gasolina	FWD	1581	66	90	10.94-07.99	*
<b>DELTA II (836_) 06.93-09.99</b>					<b>[CAMBIADO]:Fastback (Compact car-C Segment)</b>			
1.6 i.e. (836AD) (835 C1.000)		Gasolina	FWD	1581	55	75	06.93-08.99	*
1.6 i.e. (836AP) (182 A6.000)		Gasolina	FWD	1581	66	90	03.96-08.99	*
1.6 i.e. 16V (836AO) (182 A4.000)		Gasolina	FWD	1581	76	103	01.96-08.99	*
1.8		Gasolina	FWD	1747	66	90	02.96-09.99	*
1.8 i.e. (836AG, 836AL) (835 C4.000)		Gasolina	FWD	1756	66	90	07.94-08.99	*
1.8 i.e. (836AG, 836AL) (836 A6.000)		Gasolina	FWD	1756	66	90	07.94-08.99	*
1.8 i.e. (836AG, 836AL) (836 C4.000)		Gasolina	FWD	1756	66	90	07.94-08.99	*
1.8 i.e. (836AE) (835 C2.000)		Gasolina	FWD	1756	76	103	06.93-08.99	*
1.9 TD (836AM, 836AN) (160 D1.000)		Diesel	FWD	1929	66	90	10.94-08.99	*
1.9 TD (836AM, 836AN) (835 A4.000)		Diesel	FWD	1929	66	90	10.94-08.99	*
<b>Y (840_) 11.95-09.03</b>					<b>[CAMBIADO]:Fastback (Supermini car-B Segment)</b>			
1.1 (840AE) (176 B2.000)		Gasolina	FWD	1108	40	54	11.95-09.03	*
1.2 (840AA, 840AF1A) (188 A4.000)		Gasolina	FWD	1242	44	60	03.96-09.03	*
1.2 (840AA, 840AF1A) (840 A3.000)		Gasolina	FWD	1242	44	60	03.96-09.03	*
1.2 16V (840AG1A) (188 A5.000)		Gasolina	FWD	1242	59	80	10.00-09.03	*
1.2 16V (840AD) (176 B9.000)		Gasolina	FWD	1242	63	86	04.97-09.03	*
1.4 12V (840AC) (840 A4.000)		Gasolina	FWD	1370	55	75	03.96-09.03	*
1.4 12V (840AB) (840 A2.000)		Gasolina	FWD	1370	59	80	10.96-09.03	*
<b>YPSILON II (843_) 10.03-12.11</b>					<b>[CAMBIADO]:Fastback (Supermini car-B Segment)</b>			
1.2 (843.AXA1A) (188 A4.000)		Gasolina	FWD	1242	44	60	10.03-12.11	*
1.2 (843.AXL1A) (169 A4.000)		Gasolina	FWD	1242	51	69	08.10-12.11	*

# LISTA DE APLICACIONES - BUYERS GUIDE

YPSILON III (312_) 05.11-					[CAMBIADO]:Fastback (Supermini car-B Segment)			
1.2 (312.PXA1A, 312.YXA1A) (169 A4.000)	Gasolina	FWD	1242	51	69	05.11-12.21	*	
1.2 Bi-fuel (312.YXA1A) (169 A4.000)	Gasol./Gas (LPG)	FWD	1242	49	67	05.11-		
1.2 Bi-fuel (312.YXA1A) (169 A4.000)	Gasol./Gas (LPG)	FWD	1242	51	69	05.11-		
LEXUS								
NX (_Z1_) 07.14-					SUV (Luxury Crossover SUV-J Segment)			
200t AWD (AGZ15_) (8AR-FTS)	Gasolina	4WD	1998	173	235	07.14-09.17	*	