

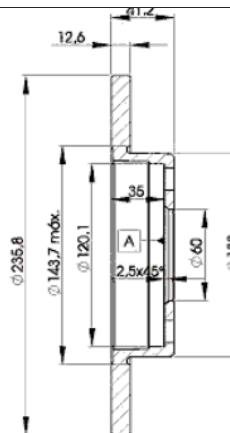
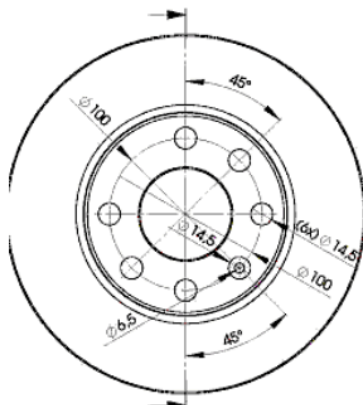
LISTA DE APLICACIONES - BUYERS GUIDE

78RBD21240



Weight: 7.580

O.E.M.	MAKE
5 69 030	OPEL
90 008 005	VAUXHALL
90 111 242	VAUXHALL
9011 1242	PONTIAC



78RBD21240

E1 90R-02C0415/0044



Ø236x12.5x41

Sin Filas



Trac.	CC	Kw	CV		
					Front / Rear

BEDFORD

ASTRA VAN II 09.84-08.91

[CAMBIADO]:Furgón/Break
(Compact car-C Segment)

1.6 (16 SV)	Gasolina	FWD	1598	66	90	09.84-08.91	*
1.6 D (16 D)	Diesel	FWD	1598	40	54	09.85-08.88	*
1.6 D (16 DA)	Diesel	FWD	1598	42	57	09.87-08.89	*
1.7 D (17 D)	Diesel	FWD	1699	42	57	09.88-08.91	*

ASTRAMAX 09.85-06.90

Furgoneta/MPV (Compact car-C Segment)

1.3 (13 S)	Gasolina	FWD	1297	55	75	12.86-06.90	*
1.4 (14 NV)	Gasolina	FWD	1389	44	60	09.89-06.90	*
1.4 (14 NV)	Gasolina	FWD	1389	56	76	09.89-06.90	*

CHEVROLET

CORSA 03.94-12.10

[CAMBIADO]:Fastback (Supermini car-B Segment)

1.0 16V (08, 68, 73, 78) (L45(61CUL4))	Gasolina	FWD	995	50	68	08.97-07.02	*
1.0 16V (08, 68, 73, 78) (X 10 YE)	Gasolina	FWD	995	50	68	08.97-07.02	*
1.0 (08, 68, 73, 78) (B 10 NZ)	Gasolina	FWD	999	37	50	03.94-07.00	*
1.0 (08, 68, 73, 78) (LA2(61CUL4))	Gasolina	FWD	999	37	50	03.94-07.00	*
1.0 (08, 68) (C 10 NE)	Gasolina	FWD	999	44	60	03.94-07.00	*
1.0 (08, 68) (L11(61CUL4))	Gasolina	FWD	999	44	60	03.94-07.00	*
1.0 (08, 68) (X 10 E)	Gasolina	FWD	999	44	60	03.94-07.00	*
1.4 GLS (08, 68, 73, 78) (2H6(85CUL4))	Gasolina	FWD	1389	44	60	08.94-07.97	*
1.4 GLS (08, 68, 73, 78) (LQ5(85CUL4))	Gasolina	FWD	1389	44	60	08.94-07.97	*
1.6 GS (L91)	Gasolina	FWD	1598	75	102	08.97-07.02	*
1.6 GSI 16V SFI (08) (L91(98CUL4))	Gasolina	FWD	1598	80	109	08.94-07.97	*

LISTA DE APLICACIONES - BUYERS GUIDE

1.0 Flex		Gasol./Etanol	FWD	996	47	64	08.99-07.02	*
CORSA 08.94-12.10					Pick-up (Supermini car-B Segment)			
1.0 (X 10 YE)		Gasolina	FWD	996	50	68	08.97-07.02	*
1.0 (X 10 E)		Gasolina	FWD	999	44	60	08.97-07.00	*
1.0 Ethanol		Gasol./Etanol	FWD	996	47	64	08.99-07.02	*
CORSA 03.94-12.10					Sedán (Supermini car-B Segment)			
1.0 (19, 98) (L45(61CUL4))		Gasolina	FWD	995	50	68	08.97-07.02	*
1.0 (19, 98) (X 10 YE)		Gasolina	FWD	995	50	68	08.97-07.02	*
1.0 (19) (C 10 NE)		Gasolina	FWD	999	44	60	03.94-07.00	*
1.0 (19) (L11(61CUL4))		Gasolina	FWD	999	44	60	03.94-07.00	*
1.0 (19) (X 10 E)		Gasolina	FWD	999	44	60	03.94-07.00	*
OPEL								
ASCONA C (J82) 09.81-08.88					[CAMBIADO]:Fastback (Executive car-E Segment)			
1.3 N (F68, M68) (13 N)		Gasolina	FWD	1297	44	60	09.81-08.86	*
1.3 S (F68, M68) (13 S)		Gasolina	FWD	1297	55	75	09.81-08.88	*
1.6 (F68, M68) (16 N)		Gasolina	FWD	1598	55	75	09.81-08.88	*
1.6 i (F68, M68) (E 16 NZ)		Gasolina	FWD	1598	55	75	09.87-08.88	*
1.6 i Cat (F68, M68) (C 16 LZ)		Gasolina	FWD	1598	55	75	09.86-08.88	*
1.6 i Cat (F68, M68) (C 16 NZ)		Gasolina	FWD	1598	55	75	09.86-08.88	*
1.6 (F68, M68) (16 SV)		Gasolina	FWD	1598	60	82	09.86-08.88	*
1.6 S (F68, M68) (16 SH)		Gasolina	FWD	1598	66	90	09.81-08.86	*
1.8 (F68, M68) (E 18 NV)		Gasolina	FWD	1796	62	84	09.87-08.88	*
1.8 E (F68, M68) (C 18 NE)		Gasolina	FWD	1796	74	100	01.85-08.86	*
1.8 E (F68, M68) (S 18 NV)		Gasolina	FWD	1796	74	100	01.85-08.86	*
1.8 i (F68, M68) (18 E)		Gasolina	FWD	1796	85	115	09.82-08.86	*
1.6 D (F68, M68) (16 D)		Diesel	FWD	1598	40	54	03.82-08.88	*
1.6 D (F68, M68) (16 DA)		Diesel	FWD	1598	40	54	03.82-08.88	*
ASCONA C (J82) 09.81-10.88					Sedán (Executive car-E Segment)			
1.3 N (F11, M11, F69) (13 N)		Gasolina	FWD	1297	44	60	09.81-08.86	*
1.3 S (F11, M11, F68, M68) (13 S)		Gasolina	FWD	1297	55	75	09.81-08.88	*
1.6 (F11, M11, F68, M68) (16 N)		Gasolina	FWD	1598	55	75	09.81-09.87	*
1.6 i (F11, M11, F68, M68) (E 16 LZ)		Gasolina	FWD	1598	55	75	09.87-08.88	*
1.6 i (F11, M11, F68, M68) (E 16 NZ)		Gasolina	FWD	1598	55	75	09.87-08.88	*
1.6 i Cat (F11, M11, F68, M68) (C 16 LZ)		Gasolina	FWD	1598	55	75	09.86-08.88	*
1.6 i Cat (F11, M11, F68, M68) (C 16 NZ)		Gasolina	FWD	1598	55	75	09.86-08.88	*
1.6 (F11, F68, M11, M68) (16 SV)		Gasolina	FWD	1598	60	82	09.86-08.88	*
1.6 S (F11, M11, F68, M68) (16 SH)		Gasolina	FWD	1598	66	90	09.81-08.86	*
1.8 (F11, M11, F68, M68) (E 18 NV)		Gasolina	FWD	1796	62	84	09.87-08.88	*
1.8 E (F11, M11, F68, M68) (C 18 NE)		Gasolina	FWD	1796	74	100	01.85-08.86	*
1.8 E (F11, M11, F68, M68) (S 18 NV)		Gasolina	FWD	1796	74	100	01.85-08.86	*
1.8 i (F11, M11, F68, M68) (18 E)		Gasolina	FWD	1796	85	115	09.82-08.86	*
1.6 D (F11, M11, F68, M68) (16 D)		Diesel	FWD	1598	40	54	03.82-08.88	*
1.6 D (F11, M11, F68, M68) (16 DA)		Diesel	FWD	1598	40	54	03.82-08.88	*
ASTRA F (T92) 09.91-01.01					[CAMBIADO]:Break (Compact car-C Segment)			
1.4 i (F35, M35) (C 14 NZ)		Gasolina	FWD	1389	44	60	09.91-01.98	*
1.4 i (F35, M35) (X 14 NZ)		Gasolina	FWD	1389	44	60	09.91-01.98	*
ASTRA F (T92) 09.91-10.00					[CAMBIADO]:Fastback (Compact car-C Segment)			
1.4 i (F08, M08, F68, M68) (C 14 NZ)		Gasolina	FWD	1389	44	60	09.91-01.98	*

LISTA DE APLICACIONES - BUYERS GUIDE

1.4 i (F08, M08, F68, M68) (X 14 NZ)		Gasolina	FWD	1389	44	60	09.91-01.98	*
1.4 (F08, M08, F68, M68) (14 NV)		Gasolina	FWD	1389	55	75	09.91-09.93	*
1.4 (F08, M08, F68, M68) (14 SE)		Gasolina	FWD	1389	60	82	09.92-01.98	*
1.4 Si (F08, M08, F68, M68) (C 14 SE)		Gasolina	FWD	1389	60	82	03.92-01.98	*
1.4 i 16V (F08, M08, F68, M68) (X 14 XE)		Gasolina	FWD	1389	66	90	09.96-02.98	*
1.6 i (F08, M08, F68, M68) (X 16 SZ)		Gasolina	FWD	1598	52	71	05.93-07.96	*
1.6 (F08, M08, F68, M68) (16 LZ2)		Gasolina	FWD	1598	55	75	09.95-01.98	*
1.6 (F08, M08, F68, M68) (16 NZR)		Gasolina	FWD	1598	55	75	09.95-01.98	*
1.6 i (F08, M08, F68, M68) (C 16 NZ)		Gasolina	FWD	1598	55	75	09.91-01.98	*
1.6 i (F08, M08, F68, M68) (X 16 SZR)		Gasolina	FWD	1598	55	75	09.91-01.98	*
ASTRA F (T92) 10.91-01.99					[CAMBIADO]:Furgón/Break (Compact car-C Segment)			
1.4 i (F70) (C 14 NZ)		Gasolina	FWD	1389	44	60	10.91-01.99	*
1.6 i (F70) (X 16 SZ)		Gasolina	FWD	1598	52	71	02.93-07.96	*
1.6 i (F70) (C 16 NZ)		Gasolina	FWD	1598	55	75	10.91-02.98	*
1.6 i (F70) (X 16 SZR)		Gasolina	FWD	1598	55	75	10.91-02.98	*
ASTRA F (T92) 03.93-03.01					Cabrio (Compact car-C Segment)			
1.4 Si (C 14 SE)		Gasolina	FWD	1389	60	82	05.93-03.01	*
1.4 i 16V (X 14 XE)		Gasolina	FWD	1389	66	90	01.96-03.01	*
ASTRA F (T92) 09.91-01.01					Sedán (Compact car-C Segment)			
1.4 i (F19, M19) (C 14 NZ)		Gasolina	FWD	1389	44	60	09.91-09.98	*
1.4 i (F19, M19) (X 14 NZ)		Gasolina	FWD	1389	44	60	09.91-09.98	*
1.4 (F19, M19) (14 NV)		Gasolina	FWD	1389	55	75	09.91-09.93	*
1.4 (F19, M19) (14 SE)		Gasolina	FWD	1389	60	82	09.92-09.98	*
1.4 Si (F19, M19) (C 14 SE)		Gasolina	FWD	1389	60	82	03.92-09.98	*
1.4 i 16V (F19, M19) (X 14 XE)		Gasolina	FWD	1389	66	90	02.96-09.98	*
1.6 i (F19, M19) (X 16 SZ)		Gasolina	FWD	1598	52	71	05.93-07.96	*
1.6 (F19, M19) (16 LZ2)		Gasolina	FWD	1598	55	75	09.95-09.98	*
1.6 (F19, M19) (16 NZR)		Gasolina	FWD	1598	55	75	09.95-09.98	*
1.6 i (F19, M19) (C 16 NZ)		Gasolina	FWD	1598	55	75	03.92-09.98	*
1.6 i (F19, M19) (X 16 SZR)		Gasolina	FWD	1598	55	75	03.92-09.98	*
ASTRA F CLASSIC (T92) 01.98-01.05					[CAMBIADO]:Break (Compact car-C Segment)			
1.4 i (F35, M35) (X 14 NZ)		Gasolina	FWD	1389	44	60	01.98-01.05	*
ASTRA F CLASSIC (T92) 01.98-08.02					[CAMBIADO]:Fastback (Compact car-C Segment)			
1.2 i		Gasolina	FWD	1199	48	65	03.98-08.00	*
1.4 i (M08, M68, F08, F68) (X 14 NZ)		Gasolina	FWD	1389	44	60	01.98-08.02	*
1.4 i		Gasolina	FWD	1389	66	90	03.98-08.00	*
ASTRA F CLASSIC (T92) 01.98-08.02					Sedán (Compact car-C Segment)			
1.4 i (F19, M19) (X 14 NZ)		Gasolina	FWD	1389	44	60	01.98-08.02	*
CORSA A (S83) 09.82-03.93					[CAMBIADO]:Fastback (Supermini car-B Segment)			
1.0 (F08, M08, F68, M68) (10 S)		Gasolina	FWD	993	33	45	09.82-03.93	*
1.6 GSI (F08, M08, M68, F68) (C 16 NZ)		Gasolina	FWD	1598	55	75	08.88-09.92	*
1.6 GSI (F08, M08, F68, M68) (C 16 NZ)		Gasolina	FWD	1598	60	82	09.88-08.90	*
1.5 D (F08, M08, F68, M68) (15 D (4EC1))		Diesel	FWD	1488	37	50	09.87-03.93	*
1.5 TD (F08, M08, F68, M68) (15 DT (T4EC1))		Diesel	FWD	1488	49	67	03.88-03.93	*
CORSA A (S83) 02.86-09.94					Furgón/hatchback (LCVs-N1 Segment)			
1.2 (F08, W5L) (C 12 NZ)		Gasolina	FWD	1195	33	45	08.90-07.94	*
1.2 (F08, W5L) (12 NV)		Gasolina	FWD	1196	37	50	08.90-07.94	*

LISTA DE APLICACIONES - BUYERS GUIDE

1.5 D (F08, W5L) (15 D (4EC1))	Diesel	FWD	1488	37	50	06.87-04.89	*
CORSA A (S83) 09.82-03.93				Sedán (Supermini car-B Segment)			
1.0 (F11, M11, F19, M19) (10 S)	Gasolina	FWD	993	33	45	09.82-09.92	*
1.2 i (F11, M11, F19, M19) (C 12 NZ)	Gasolina	FWD	1195	33	45	09.89-03.93	*
1.2 S (F11, M11, M19, F19) (12 ST)	Gasolina	FWD	1196	40	55	09.82-03.93	*
1.5 D (F11, M11, F19, M19) (15 D (4EC1))	Diesel	FWD	1488	37	50	10.87-11.92	*
1.5 TD (F11, M11, F19, M19) (15 DT (T4EC1))	Diesel	FWD	1488	49	67	10.87-03.93	*
CORSA B (S93) 08.94-12.01				Furgón/hatchback (LCVs-N1 Segment)			
1.2 (F08, W5L) (C 12 NZ)	Gasolina	FWD	1195	33	45	08.94-12.01	*
1.4 i (F08, W5L) (C 14 NZ)	Gasolina	FWD	1389	44	60	08.99-09.00	*
1.4 i (F08, W5L) (X 14 SZ)	Gasolina	FWD	1389	44	60	08.99-09.00	*
1.5 D (F08, W5L) (15 D)	Diesel	FWD	1488	37	50	09.94-05.97	*
1.5 D (F08, W5L) (X 15 D)	Diesel	FWD	1488	37	50	09.94-05.97	*
1.7 D (F08, W5L) (17 D (4EE1))	Diesel	FWD	1686	44	60	08.99-09.00	*
1.7 D (F08, W5L) (X 17 D (4EE1))	Diesel	FWD	1686	44	60	08.99-09.00	*
CORSA B / VITA B (S93) 03.93-10.09				[CAMBIADO]:Fastback (Supermini car-B Segment)			
1.0 i 12V (F08, F68, M68) (X 10 XE)	Gasolina	FWD	973	40	54	11.96-09.00	*
1.2 i (F08, F68, M68) (C 12 NZ)	Gasolina	FWD	1195	33	45	03.93-09.00	*
1.2 i (F08, F68, M68) (X 12 SZ)	Gasolina	FWD	1195	33	45	03.93-09.00	*
1.2 i (F08, F68, M68) (12 NZ)	Gasolina	FWD	1195	33	45	03.93-09.00	*
1.2 i 16V (F08, F68, M68) (X 12 XE)	Gasolina	FWD	1199	48	65	03.98-09.00	*
1.4 i (F08, F68, M68) (C 14 NZ)	Gasolina	FWD	1389	40	54	03.93-09.00	*
1.4 i (F08, F68, M68) (X 14 SZ)	Gasolina	FWD	1389	40	54	03.93-09.00	*
1.4 i (F08, F68, M68) (C 14 NZ)	Gasolina	FWD	1389	44	60	03.93-09.00	*
1.4 i (F08, F68, M68) (X 14 SZ)	Gasolina	FWD	1389	44	60	03.93-09.00	*
1.4 (F08, F68, M68) (C 14 SE)	Gasolina	FWD	1389	54	73	04.93-08.94	*
1.5 D (F08, F68, M68) (15 D)	Diesel	FWD	1488	37	50	03.93-09.00	*
1.5 TD (F08, F68, M68) (15 TD)	Diesel	FWD	1488	49	67	03.93-09.00	*
1.5 TD (F08, F68, M68) (X 15 TD)	Diesel	FWD	1488	49	67	03.93-09.00	*
1.7 D (F08, F68, M68) (17 D (4EE1))	Diesel	FWD	1686	44	60	02.96-09.00	*
1.7 D (F08, F68, M68) (X 17 D (4EE1))	Diesel	FWD	1686	44	60	02.96-09.00	*
KADETT D (35_, 36_, 45_, 46_) 08.79-08.84				[CAMBIADO]:Break (Compact car-C Segment)			
1.6	Gasolina	FWD	1598	51	69	09.79-08.84	*
1.6	Gasolina	FWD	1598	55	75	09.79-08.84	*
1.6 S (16 SH)	Gasolina	FWD	1598	66	90	09.81-08.84	*
1.6 D (16 D)	Diesel	FWD	1598	40	54	03.82-08.84	*
KADETT D (31_-34_, 41_-44_) 08.79-08.84				[CAMBIADO]:Fastback (Compact car-C Segment)			
1.6	Gasolina	FWD	1598	51	69	09.79-08.84	*
1.6	Gasolina	FWD	1598	55	75	09.79-08.84	*
1.6 S (16 SH)	Gasolina	FWD	1598	66	90	09.81-08.84	*
1.6 D (16 D)	Diesel	FWD	1598	40	54	03.82-08.84	*
KADETT E (T85) 09.84-08.91				[CAMBIADO]:Break (Compact car-C Segment)			
1.2 (C15, C35, D15, D35) (12 SC)	Gasolina	FWD	1196	40	55	09.84-07.86	*
1.3 i Cat (C15, C35, D15, D35) (C 13 N)	Gasolina	FWD	1297	44	60	09.85-08.91	*
1.3 N (C15, C35, D15, D35) (13 N)	Gasolina	FWD	1297	44	60	09.84-08.91	*
1.3 (C15, C35, D15, D35) (13 S)	Gasolina	FWD	1297	50	68	01.85-12.87	*
1.3 S (C15, C35, D15, D35) (13 S)	Gasolina	FWD	1297	55	75	09.84-08.87	*
1.4 i (C15, C35, D15, D35) (C 14 NZ)	Gasolina	FWD	1389	44	60	01.90-08.91	*

LISTA DE APLICACIONES - BUYERS GUIDE

1.4 S (C15, C35, D15, D35) (14 NV)	Gasolina	FWD	1389	55	75	01.90-08.91	*
1.6 i (C15, C35, D15, D35) (E 16 NZ)	Gasolina	FWD	1598	55	75	09.86-08.91	*
1.6 i Cat (C15, C35, D15, D35) (C 16 LZ)	Gasolina	FWD	1598	55	75	09.86-08.91	*
1.6 i Cat (C15, C35, D15, D35) (C 16 NZ)	Gasolina	FWD	1598	55	75	09.86-08.91	*
1.6 (C15, C35, D15, D35) (16 SV)	Gasolina	FWD	1598	60	82	09.86-08.91	*
1.6 S (C15, C35, D35, D15) (16 SH)	Gasolina	FWD	1598	66	90	09.84-08.86	*
1.8 S (C15, C35, D15, D35) (E 18 NV)	Gasolina	FWD	1796	62	84	09.87-08.91	*
1.8 S (C15, C35, D15, D35) (S 18 NV)	Gasolina	FWD	1796	62	84	09.87-08.91	*
1.8 i (C15, C35, D15, D35) (C 18 NT)	Gasolina	FWD	1796	66	90	06.85-08.91	*
1.8 i (C15, C35, D15, D35) (C 18 NZ)	Gasolina	FWD	1796	66	90	06.85-08.91	*
1.8 E (C15, C35, D15, D35) (C 18 NE)	Gasolina	FWD	1796	74	100	10.85-08.86	*
1.8 (46)	Gasolina	FWD	1796	82	111	12.88-08.91	*
1.8 i (C15, C35, D15, D35) (18 E)	Gasolina	FWD	1796	85	115	09.84-08.86	*
1.8 i (C15, C35, D15, D35) (18 SE)	Gasolina	FWD	1796	85	115	09.84-08.86	*
1.5 TD (C15, C35, D15, D35) (15 TD)	Diesel	FWD	1488	53	72	07.88-08.91	*
1.6 D (C15, C35, D15, D35) (16 D)	Diesel	FWD	1598	40	54	09.84-01.89	*
1.6 D (C15, C35, D15, D35) (16 DA)	Diesel	FWD	1598	40	54	09.84-01.89	*
1.7 D (C15, C35, D15, D35) (17 D)	Diesel	FWD	1699	42	57	02.89-08.91	*
KADETT E (T85) 09.84-12.93				[CAMBIADO]:Fastback (Compact car-C Segment)			
1.3 (C08, C48, D08, D48) (13 S)	Gasolina	FWD	1297	50	68	01.85-12.87	*
1.3 S (C08, C48, D08, D48) (13 S)	Gasolina	FWD	1297	55	75	09.84-08.87	*
1.6 i (C08, C48, D08, D48) (E 16 NZ)	Gasolina	FWD	1598	55	75	09.86-08.91	*
1.6 i Cat (C08, C48, D08, D48) (C 16 LZ)	Gasolina	FWD	1598	55	75	09.86-08.91	*
1.6 i Cat (C08, C48, D08, D48) (C 16 NZ)	Gasolina	FWD	1598	55	75	09.86-08.91	*
1.6 S (C08, C48, D08, D48) (16 SV)	Gasolina	FWD	1598	60	82	09.86-08.91	*
1.6 S (C08, D08, C48, D48) (16 SH)	Gasolina	FWD	1598	66	90	09.84-08.86	*
1.8 S (C08, C48, D08, D48) (E 18 NV)	Gasolina	FWD	1796	62	84	09.87-08.91	*
1.8 S (C08, C48, D08, D48) (S 18 NV)	Gasolina	FWD	1796	62	84	09.87-08.91	*
1.8 i (C08, C48, D08, D48) (C 18 NT)	Gasolina	FWD	1796	66	90	06.85-08.91	*
1.8 i (C08, C48, D08, D48) (C 18 NZ)	Gasolina	FWD	1796	66	90	06.85-08.91	*
1.8 E (C08, C48, D08, D48) (C 18 NE)	Gasolina	FWD	1796	74	100	10.85-08.86	*
1.5 TD (C08, C48, D08, D48) (15 TD)	Diesel	FWD	1488	53	72	07.88-08.91	*
1.6 D (C08, C48, D08, D48) (16 D)	Diesel	FWD	1598	40	54	09.84-01.89	*
1.6 D (C08, C48, D08, D48) (16 DA)	Diesel	FWD	1598	40	54	09.84-01.89	*
1.7 D (C08, C48, D08, D48) (17 D)	Diesel	FWD	1699	42	57	02.89-08.91	*
KADETT E (T85) 08.84-09.93				[CAMBIADO]:Furgón/Break (Compact car-C Segment)			
1.2 (C70, D70) (12 SC)	Gasolina	FWD	1196	40	55	09.84-07.86	*
1.3 N (C70, D70) (13 N)	Gasolina	FWD	1297	44	60	09.84-07.89	*
1.3 N (C70, D70) (13 NB)	Gasolina	FWD	1297	44	60	09.84-07.89	*
1.4 i (C70, D70) (C 14 NZ)	Gasolina	FWD	1389	44	60	01.90-08.91	*
1.6 i (C70, D70) (C 16 NZ)	Gasolina	FWD	1598	55	75	08.89-09.93	*
1.8 i (C70, D70) (C 18 NT)	Gasolina	FWD	1796	66	90	08.84-09.92	*
1.6 D (C70, D70) (16 D)	Diesel	FWD	1598	40	54	08.84-08.88	*
1.6 D (C70, D70) (16 DA)	Diesel	FWD	1598	40	54	08.84-08.88	*
1.7 D (C70, D70) (17 D)	Diesel	FWD	1699	42	57	08.88-09.92	*
KADETT E (T85) 01.86-07.94				[CAMBIADO]:Furgón/Break (LCVs-N1 Segment)			
1.3 N (C25, D25) (13 N)	Gasolina	FWD	1297	44	60	01.86-12.89	*
1.3 S (C25, D25) (13 S)	Gasolina	FWD	1297	55	75	01.86-12.89	*
1.4 i (C25, D25) (C 14 NZ)	Gasolina	FWD	1389	44	60	08.91-07.94	*
1.4 S (C25, D25) (14 NV)	Gasolina	FWD	1389	55	75	07.89-08.91	*

LISTA DE APLICACIONES - BUYERS GUIDE

1.6 i (C25, D25) (C 16 NZ)	Gasolina	FWD	1598	55	75	08.91-07.94	*
1.6 (C25, D25) (16 SV)	Gasolina	FWD	1598	60	82	09.86-12.91	*
1.6 D (C25, D25) (16 D)	Diesel	FWD	1598	40	54	01.86-12.89	*
1.6 D (C25, D25) (16 DA)	Diesel	FWD	1598	40	54	01.86-12.89	*
1.7 D (C25, D25) (17 D)	Diesel	FWD	1699	42	57	01.89-07.94	*
1.7 D (C25, D25) (17 DR)	Diesel	FWD	1699	44	60	07.92-07.94	*
KADETT E (T85) 10.86-02.93				Cabrio (Compact car-C Segment)			
1.3 S (13 S)	Gasolina	FWD	1297	55	75	03.87-02.93	*
1.4 i (C 14 NZ)	Gasolina	FWD	1389	44	60	01.90-08.91	*
1.4 S (14 NV)	Gasolina	FWD	1389	55	75	08.90-02.93	*
1.6 i (E 16 NZ)	Gasolina	FWD	1598	55	75	10.86-02.93	*
1.6 i Cat (C 16 LZ)	Gasolina	FWD	1598	55	75	10.87-02.93	*
1.6 i Cat (C 16 NZ)	Gasolina	FWD	1598	55	75	10.87-02.93	*
1.6 i (16 SV)	Gasolina	FWD	1598	60	82	07.89-02.93	*
KADETT E / MONZA E (T85) 09.84-12.93				Sedán (Compact car-C Segment)			
1.6 i (C19, D19) (E 16 NZ)	Gasolina	FWD	1598	55	75	09.86-08.91	*
1.6 i Cat (C19, D19) (C 16 LZ)	Gasolina	FWD	1598	55	75	09.86-08.91	*
1.6 i Cat (C19, D19) (C 16 NZ)	Gasolina	FWD	1598	55	75	09.86-08.91	*
1.6 S (C19, D19) (16 SV)	Gasolina	FWD	1598	60	82	09.86-08.91	*
1.6 S (C19, D19) (16 SH)	Gasolina	FWD	1598	66	90	09.84-08.86	*
1.6	Gasolina	FWD	1598	75	102	09.87-08.91	*
1.8 S (C19, D19) (E 18 NV)	Gasolina	FWD	1796	62	84	09.87-08.91	*
1.8 S (C19, D19) (S 18 NV)	Gasolina	FWD	1796	62	84	09.87-08.91	*
1.8 i (C19, D19) (18 SV)	Gasolina	FWD	1796	66	90	08.89-05.92	*
1.8 i (C19, D19) (C 18 NT)	Gasolina	FWD	1796	66	90	08.89-05.92	*
1.8 i (C19, D19) (C 18 NZ)	Gasolina	FWD	1796	66	90	08.89-05.92	*
1.8 i (C19, D19) (C 18 NE)	Gasolina	FWD	1796	74	100	10.85-08.86	*
1.8 (C19, D19) (18 E)	Gasolina	FWD	1796	84	114	09.87-08.90	*
1.8 i (C19, D19) (18 E)	Gasolina	FWD	1796	85	115	09.84-08.86	*
1.8 i (C19, D19) (18 SE)	Gasolina	FWD	1796	85	115	09.84-08.86	*
1.5 TD (C19, D19) (15 TD)	Diesel	FWD	1488	53	72	07.88-08.91	*
1.6 D (C19, D19) (16 D)	Diesel	FWD	1598	40	54	09.84-01.89	*
1.6 D (C19, D19) (16 DA)	Diesel	FWD	1598	40	54	09.84-01.89	*
1.7 D (C19, D19) (17 D)	Diesel	FWD	1699	42	57	02.89-08.91	*
TIGRA A (S93) 07.94-12.00				Coupé (Sports car-S Segment)			
1.4 16V (F07) (X 14 XE)	Gasolina	FWD	1389	66	90	07.94-12.00	*
VECTRA A (J89) 04.88-12.95				[CAMBIADO]:Fastback (Large family car-D Segment)			
1.4 S (F68, M68) (14 NV)	Gasolina	FWD	1389	55	75	04.88-06.92	*
1.6 i Cat (F68, M68) (C 16 NZ)	Gasolina	FWD	1598	55	75	09.88-11.95	*
1.6 i Cat (F68, M68) (C 16 NZ2)	Gasolina	FWD	1598	55	75	09.88-11.95	*
1.6 S (16 SV)	Gasolina	FWD	1598	60	82	09.88-05.93	*
1.6 (F68, M68) (E 16 NZ)	Gasolina	FWD	1598	65	88	08.88-06.94	*
1.8 S (F68, M68) (E 18 NVR)	Gasolina	FWD	1796	65	88	09.88-07.89	*
1.8 i (F68, M68) (18 SV)	Gasolina	FWD	1796	66	90	09.88-10.90	*
1.8 i Cat (F68, M68) (C 18 NZ)	Gasolina	FWD	1796	66	90	03.90-11.95	*
1.7 D (F68, M68) (17 D)	Diesel	FWD	1699	42	57	09.88-09.92	*
VECTRA A (J89) 08.88-12.95				Sedán (Large family car-D Segment)			
1.4 S (F19, M19) (14 NV)	Gasolina	FWD	1389	55	75	09.88-06.92	*
1.6 i (F19, M19) (C 16 NZ)	Gasolina	FWD	1598	55	75	09.88-11.95	*

LISTA DE APLICACIONES - BUYERS GUIDE

1.6 i (F19, M19) (C 16 NZ2)		Gasolina	FWD	1598	55	75	09.88-11.95	*
1.6 i (F19, M19) (E 16 NZ)		Gasolina	FWD	1598	55	75	09.88-11.95	*
1.6 (F19, M19) (16 SV)		Gasolina	FWD	1598	60	82	09.88-05.93	*
1.8 S (F19, M19) (E 18 NVR)		Gasolina	FWD	1796	65	88	09.88-07.89	*
1.8 i Cat (F19, M19) (C 18 NZ)		Gasolina	FWD	1796	66	90	03.90-11.95	*
1.8 S (F19, M19) (18 SV)		Gasolina	FWD	1796	66	90	09.89-10.90	*
1.7 D (F19, M19) (17 D)		Diesel	FWD	1699	42	57	10.88-09.92	*
VAUXHALL								
ASTRA Mk I 09.79-08.86					[CAMBIADO]:Break (Compact car-C Segment)			
1.6 S (16 SH)		Gasolina	FWD	1598	66	90	09.81-08.86	*
ASTRA Mk I 09.79-08.86					[CAMBIADO]:Fastback (Compact car-C Segment)			
1.6 S (16 S)		Gasolina	FWD	1598	66	90	09.81-08.86	*
1.8 GTE (18 E)		Gasolina	FWD	1796	85	115	03.83-08.86	*
ASTRA Mk II (T85) 09.84-08.91					[CAMBIADO]:Break (Compact car-C Segment)			
1.6 (16 SV)		Gasolina	FWD	1598	60	82	09.84-08.91	*
1.6 S (16 S)		Gasolina	FWD	1598	66	90	09.84-08.86	*
1.6 D (16 DA)		Diesel	FWD	1598	40	54	09.84-12.89	*
1.7 D (17 D)		Diesel	FWD	1699	42	57	02.89-08.91	*
ASTRA Mk II (T85) 01.87-09.93					Cabrio (Compact car-C Segment)			
1.4 S (43) (14 NV)		Gasolina	FWD	1389	55	75	09.91-09.93	*
1.6 i		Gasolina	FWD	1598	55	75	01.91-08.93	*
1.6 i Cat		Gasolina	FWD	1598	55	75	10.87-02.93	*
1.6 i (16 SV)		Gasolina	FWD	1598	60	82	01.87-12.91	*
ASTRA Mk II BELMONT (T85) 09.85-12.91					Sedán (Compact car-C Segment)			
1.6 S (16 SV)		Gasolina	FWD	1598	60	82	01.89-12.91	*
1.6		Gasolina	FWD	1598	66	90	09.85-08.91	*
1.8 i (C 18 NE)		Gasolina	FWD	1796	74	100	10.85-08.86	*
1.5 DT		Diesel	FWD	1499	49	67	01.88-08.90	*
1.5 DT		Diesel	FWD	1499	53	72	01.87-08.89	*
1.6 D (16 D)		Diesel	FWD	1598	40	54	09.85-08.91	*
1.6 D (16 DA)		Diesel	FWD	1598	40	54	09.85-08.91	*
1.7 D (17 D)		Diesel	FWD	1699	42	57	01.89-12.91	*
ASTRA Mk II CC (T85) 09.84-08.91					[CAMBIADO]:Fastback (Compact car-C Segment)			
1.6 (16 SV)		Gasolina	FWD	1598	60	82	09.84-08.91	*
1.6 S (16 SH)		Gasolina	FWD	1598	66	90	09.84-08.86	*
1.6 D (16 D)		Diesel	FWD	1598	40	54	09.84-12.89	*
1.6 D (16 DA)		Diesel	FWD	1598	40	54	09.84-12.89	*
1.7 D (17 DR)		Diesel	FWD	1699	42	57	09.88-08.91	*
ASTRA Mk III (F) (T92) 03.91-12.98					[CAMBIADO]:Break (Compact car-C Segment)			
1.4 i (C 14 NZ)		Gasolina	FWD	1389	44	60	09.91-02.98	*
1.4 i (X 14 NZ)		Gasolina	FWD	1389	44	60	09.91-02.98	*
1.4 S		Gasolina	FWD	1389	55	75	09.91-02.98	*
1.4 i (C 14 SE)		Gasolina	FWD	1389	60	82	03.91-02.98	*
1.6 i (X 16 SZ)		Gasolina	FWD	1598	52	71	07.94-02.98	*
1.6 i (C 16 NZ)		Gasolina	FWD	1598	55	75	09.91-12.98	*
1.6 i (E 16 NZ)		Gasolina	FWD	1598	55	75	09.91-12.98	*
1.6 i (X 16 SZR)		Gasolina	FWD	1598	55	75	09.91-12.98	*
1.6 Si (C 16 SE)		Gasolina	FWD	1598	74	100	03.91-12.94	*

LISTA DE APLICACIONES - BUYERS GUIDE

ASTRA Mk III (F) (T92) 09.91-02.98					[CAMBIADO]:Fastback (Compact car-C Segment)			
1.4 i (C 14 NZ)		Gasolina	FWD	1389	44	60	09.91-02.98	*
1.4 i (X 14 NZ)		Gasolina	FWD	1389	44	60	09.91-02.98	*
1.4 S (14 NV)		Gasolina	FWD	1389	55	75	09.91-02.98	*
1.4 i (C 14 SE)		Gasolina	FWD	1389	60	82	03.92-02.98	*
1.6 i (X 16 SZ)		Gasolina	FWD	1598	52	71	02.93-12.96	*
1.6 i (16 NZR)		Gasolina	FWD	1598	55	75	09.91-02.98	*
1.6 i (C 16 NZ)		Gasolina	FWD	1598	55	75	09.91-02.98	*
1.6 i (E 16 NZ)		Gasolina	FWD	1598	55	75	09.91-02.98	*
1.6 i (X 16 SZR)		Gasolina	FWD	1598	55	75	09.91-02.98	*
1.6 i (C 16 SE)		Gasolina	FWD	1598	74	100	03.92-02.98	*
ASTRA Mk III (F) (T92) 09.91-03.01					Cabrio (Compact car-C Segment)			
1.4 i		Gasolina	FWD	1389	60	82	05.93-03.01	*
1.6 i (X 16 SZ)		Gasolina	FWD	1598	52	71	03.93-08.96	*
1.6 i (X 16 SZR)		Gasolina	FWD	1598	55	75	01.96-03.01	*
1.6		Gasolina	FWD	1598	74	100	03.94-08.95	*
ASTRA Mk III (F) (T92) 09.91-09.98					Sedán (Compact car-C Segment)			
1.4 i (C 14 NZ)		Gasolina	FWD	1389	44	60	04.92-09.98	*
1.4 i (C 14 SE)		Gasolina	FWD	1389	60	82	04.92-09.98	*
1.6 i (X 16 SZ)		Gasolina	FWD	1598	52	71	08.94-07.96	*
1.6 i (C 16 NZ)		Gasolina	FWD	1598	55	75	03.92-09.98	*
1.6 i (X 16 SZR)		Gasolina	FWD	1598	55	75	03.92-09.98	*
1.6 i (C 16 SE)		Gasolina	FWD	1598	74	100	05.92-12.94	*
ASTRAMAX (T85) 08.85-10.94					Furgoneta/MPV (LCVs-N1 Segment)			
1.3 S (13 S)		Gasolina	FWD	1297	55	75	08.85-12.89	*
1.4 i (C 14 NZ)		Gasolina	FWD	1389	44	60	08.91-07.94	*
1.6 i (C 16 NZ)		Gasolina	FWD	1598	55	75	08.91-10.94	*
1.6 (16 SV)		Gasolina	FWD	1598	60	82	09.85-12.91	*
1.6 (C 16 NZ)		Gasolina	FWD	1598	61	83	12.86-12.92	*
1.6 (E 16 NZ)		Gasolina	FWD	1598	61	83	12.86-12.92	*
ASTRAVAN Mk III (F) (T92) 01.91-08.98					[CAMBIADO]:Furgón/Break (Compact car-C Segment)			
1.4 i (F70) (C 14 NZ)		Gasolina	FWD	1389	44	60	09.91-08.95	*
CAVALIER Mk II (J82) 09.81-08.88					[CAMBIADO]:Break (Large family car-D Segment)			
1.3 S (13 S)		Gasolina	FWD	1297	55	75	09.81-08.88	*
1.6 (16 SH)		Gasolina	FWD	1598	66	90	10.83-08.88	*
1.6 D (16 DA)		Diesel	FWD	1598	40	54	03.82-08.88	*
CAVALIER Mk II (J82) 09.81-08.88					Sedán (Large family car-D Segment)			
1.3 N		Gasolina	FWD	1297	44	60	09.81-08.88	*
1.3 S (13 S)		Gasolina	FWD	1297	55	75	09.81-08.88	*
1.6		Gasolina	FWD	1598	51	69	08.81-07.86	*
1.6 i (E 16 NZ)		Gasolina	FWD	1598	55	75	08.86-08.88	*
1.6 i Cat (C 16 LZ)		Gasolina	FWD	1598	55	75	08.86-08.88	*
1.6 i Cat (C 16 NZ)		Gasolina	FWD	1598	55	75	08.86-08.88	*
1.6 N (16 N)		Gasolina	FWD	1598	55	75	09.81-08.88	*
1.6 S (16 SH)		Gasolina	FWD	1598	66	90	09.81-08.88	*
1.6 D (16 D)		Diesel	FWD	1598	40	54	03.82-08.88	*
CAVALIER Mk II CC (J82) 09.81-08.88					[CAMBIADO]:Fastback (Large family car-D Segment)			
1.3		Gasolina	FWD	1297	44	59	09.81-08.88	*

LISTA DE APLICACIONES - BUYERS GUIDE

1.3 S (13 S)		Gasolina	FWD	1297	55	75	09.81-08.88	*
1.6 S (16 SH)		Gasolina	FWD	1598	66	90	09.81-08.88	*
1600D (16 D)		Diesel	FWD	1598	40	54	03.82-08.88	*
1600D (16 DA)		Diesel	FWD	1598	40	54	03.82-08.88	*
CAVALIER Mk III (J89) 08.88-11.95					Sedán (Large family car-D Segment)			
1.4 S (14 NV)		Gasolina	FWD	1389	55	75	09.88-11.95	*
1.6 i (X 16 SZ)		Gasolina	FWD	1598	52	71	09.93-11.95	*
1.6 i (C 16 NZ)		Gasolina	FWD	1598	55	75	09.88-11.95	*
1.6 i (E 16 NZ)		Gasolina	FWD	1598	55	75	09.88-11.95	*
1.6 (16 SV)		Gasolina	FWD	1598	60	82	09.88-05.93	*
1.8 (E 18 NVR)		Gasolina	FWD	1796	65	88	09.89-08.92	*
1.8 (18 SV)		Gasolina	FWD	1796	66	90	09.88-08.95	*
1.8 (C 18 NZ)		Gasolina	FWD	1796	66	90	09.88-08.95	*
1.8 i Cat (18 SV)		Gasolina	FWD	1796	66	90	03.90-11.95	*
1.8 i Cat (C 18 NZ)		Gasolina	FWD	1796	66	90	03.90-11.95	*
1.7 TD (17 TD)		Diesel	FWD	1686	60	82	09.88-11.95	*
1.7 D (17 D)		Diesel	FWD	1699	42	57	09.88-09.92	*
1.7 D (17 DR)		Diesel	FWD	1699	44	60	07.92-11.95	*
CAVALIER Mk III CC (J89) 09.88-11.95					[CAMBIADO]:Fastback (Large family car-D Segment)			
1.4 S (14 NV)		Gasolina	FWD	1389	55	75	09.88-11.95	*
1.6 i (X 16 SZ)		Gasolina	FWD	1598	52	71	09.93-11.95	*
1.6 i (C 16 NZ)		Gasolina	FWD	1598	55	75	09.88-11.95	*
1.6 i (E 16 NZ)		Gasolina	FWD	1598	55	75	09.88-11.95	*
1.6 (16 SV)		Gasolina	FWD	1598	60	82	09.88-05.93	*
1.8 (18 SV)		Gasolina	FWD	1796	66	90	09.88-10.90	*
1.8 (C 18 NZ)		Gasolina	FWD	1796	66	90	09.88-10.90	*
1.8 i Cat (18 SV)		Gasolina	FWD	1796	66	90	03.90-11.95	*
1.8 i Cat (C 18 NZ)		Gasolina	FWD	1796	66	90	03.90-11.95	*
1.7 D (17 D)		Diesel	FWD	1699	42	57	09.88-09.92	*
CORSA Mk I (B) (S93) 12.92-09.00					[CAMBIADO]:Fastback (Supermini car-B Segment)			
1.0 i 12V (X 10 XE)		Gasolina	FWD	973	40	54	11.96-09.00	*
1.2 i (C 12 NZ)		Gasolina	FWD	1195	33	45	03.93-09.00	*
1.2 i (X 12 SZ)		Gasolina	FWD	1195	33	45	03.93-09.00	*
1.2 i 16V (X 12 XE)		Gasolina	FWD	1199	48	65	03.98-09.00	*
1.4 i (C 14 NZ)		Gasolina	FWD	1389	44	60	03.93-09.00	*
1.4 i (X 14 SZ)		Gasolina	FWD	1389	44	60	03.93-09.00	*
1.4 i S (C 14 SE)		Gasolina	FWD	1389	60	82	03.93-09.00	*
1.4 i 16V (X 14 XE)		Gasolina	FWD	1389	66	90	09.94-09.00	*
1.6 i 16V (X 16 XE)		Gasolina	FWD	1598	78	106	09.94-09.00	*
1.5 D (15 D)		Diesel	FWD	1488	37	50	12.92-12.96	*
1.5 TD (X 15 TD)		Diesel	FWD	1488	49	67	03.93-10.96	*
1.7 D (X 17 D)		Diesel	FWD	1686	44	60	02.96-09.00	*
CORSAVAN Mk I (B) (S93) 01.94-09.00					Furgón/hatchback (LCVs-N1 Segment)			
1.4 i (C 14 NZ)		Gasolina	FWD	1389	44	60	01.94-09.00	*
1.4 i (X 14 SZ)		Gasolina	FWD	1389	44	60	01.94-09.00	*
1.5 D (15 D)		Diesel	FWD	1488	37	50	08.94-12.95	*
1.7 D (X 17 D)		Diesel	FWD	1686	44	60	01.94-09.00	*
NOVA (S83) 09.82-12.93					Sedán (Supermini car-B Segment)			
1.0 (10 S)		Gasolina	FWD	993	33	45	09.82-10.87	*

LISTA DE APLICACIONES - BUYERS GUIDE

1.2 (C 12 NZ)	Gasolina	FWD	1195	33	45	02.92-12.93	*
1.5 D	Diesel	FWD	1488	37	50	09.87-02.93	*
1.5 TD (15 DT (T4EC1))	Diesel	FWD	1488	49	67	01.90-02.93	*
NOVA CC (S83) 05.83-03.93				[CAMBIADO]:Fastback (Supermini car-B Segment)			
1.0 (10 S)	Gasolina	FWD	993	33	45	05.83-03.93	*
1.5 D (15 D)	Diesel	FWD	1488	37	50	09.87-03.93	*
1.5 TD (15 DT (T4EC1))	Diesel	FWD	1488	49	67	01.90-03.93	*
NOVAVAN (S83) 01.90-10.94				Furgón/hatchback (LCVs-N1 Segment)			
1.0 (10 S)	Gasolina	FWD	993	33	45	10.91-12.91	*
1.5 D (15 D)	Diesel	FWD	1488	37	50	01.91-10.94	*