

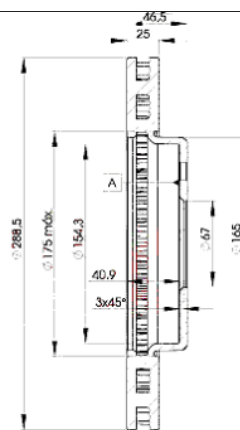
LISTA DE APLICACIONES - BUYERS GUIDE

78RBD20410



Weight: 13.260

O.E.M.	MAKE
203 421 03 12	MERCEDES-BENZ
203 421 05 12 64	MERCEDES-BENZ
210 421 07 12	MERCEDES-BENZ
210 421 24 12	MERCEDES-BENZ
210 421 24 12 64	MERCEDES-BENZ
210 421 25 12 64	MERCEDES-BENZ



78RBD20410

E1 90R-02C0538/0081



Ø288.5x25x46.5

Sin Filas



Trac.	CC	Kw	CV		
					Front / Rear

CHRYSLER

CROSSFIRE 05.04-12.08

3.2 (EGX)	Gasolina	RWD	3199	160	218	05.04-12.08	*
-----------	----------	-----	------	-----	-----	-------------	---

CROSSFIRE 07.03-12.08

3.2 (EGX)	Gasolina	RWD	3199	160	218	07.03-12.08	*
-----------	----------	-----	------	-----	-----	-------------	---

MERCEDES-BENZ

C-Class (W202) 03.93-05.00

C 240 (202.026) (M 112.910)	Gasolina	RWD	2398	125	170	06.97-05.00	*
C 280 (202.028) (M 104.941)	Gasolina	RWD	2799	142	193	05.93-05.00	*
C 250 Turbo-D (202.128) (OM 605.960)	Diesel	RWD	2497	110	150	10.95-05.00	*

C-Class II (W203) 05.00-12.07

C 180 Kompressor (203.046) (M 271.946)	Gasolina	RWD	1796	105	143	05.02-02.07	*
C 200 Kompressor (203.045) (M 271.940)	Gasolina	RWD	1796	120	163	05.02-02.07	*
C 200 CGI Kompressor (203.743) (M 271.942)	Gasolina	RWD	1796	125	170	07.03-02.07	*
C 230 Kompressor (203.040) (M 271.948)	Gasolina	RWD	1796	141	192	02.04-02.07	*
C 180 (203.035) (M 111.951)	Gasolina	RWD	1998	95	129	10.00-05.02	*
C 200 Kompressor (203.045) (M 111.955)	Gasolina	RWD	1998	120	163	05.00-06.02	*
C 230 (203.052) (M 272.920)	Gasolina	RWD	2496	150	204	01.05-02.07	*
C 200 CDI (203.004) (OM 611.962)	Diesel	RWD	2148	75	102	02.01-06.03	*
C 200 CDI (203.004) (OM 611.962)	Diesel	RWD	2148	85	116	09.00-06.03	*
C 200 CDI (203.007) (OM 646.962)	Diesel	RWD	2148	90	122	04.03-02.07	*
C 200 CDI (203.007) (OM 646.963)	Diesel	RWD	2148	90	122	04.03-02.07	*
C 220 CDI (203.006) (OM 611.962)	Diesel	RWD	2148	100	136	05.00-02.07	*
C 220 CDI (203.006, 203.008) (OM 611.962)	Diesel	RWD	2148	105	143	05.00-02.07	*

LISTA DE APLICACIONES - BUYERS GUIDE

C 220 CDI (203.006, 203.008) (OM 646.963)		Diesel	RWD	2148	105	143	05.00-02.07	*
C 220 CDI (203.008) (OM 646.963)		Diesel	RWD	2148	110	150	04.03-02.07	*
C-Class II T-Model (S203) 03.01-08.07					[CAMBIADO]:Break (Compact executive car-D Segment)			
C 180 Kompressor (203.246) (M 271.946)		Gasolina	RWD	1796	105	143	05.02-08.07	*
C 200 Kompressor (203.245) (M 271.940)		Gasolina	RWD	1796	120	163	05.02-08.07	*
C 200 CGI Kompressor (203.743) (M 271.942)		Gasolina	RWD	1796	125	170	07.03-08.07	*
C 180 (203.235) (M 111.951)		Gasolina	RWD	1998	95	129	03.01-05.02	*
C 200 Kompressor (203.245) (M 111.955)		Gasolina	RWD	1998	120	163	03.01-05.02	*
C 200 CDI (203.204) (OM 611.962)		Diesel	RWD	2148	75	102	03.01-08.07	*
C 200 CDI (203.204) (OM 646.962)		Diesel	RWD	2148	75	102	03.01-08.07	*
C 200 CDI (203.204) (OM 611.962)		Diesel	RWD	2148	85	116	03.01-08.07	*
C 200 CDI (203.207) (OM 646.962)		Diesel	RWD	2148	90	122	04.03-08.07	*
C 200 CDI (203.207) (OM 646.963)		Diesel	RWD	2148	90	122	04.03-08.07	*
C 220 CDI (203.206, 203.208) (OM 611.962)		Diesel	RWD	2148	105	143	03.01-08.07	*
C 220 CDI (203.208) (OM 646.963)		Diesel	RWD	2148	110	150	02.04-08.07	*
C-Class III T-Model (S204) 08.07-08.14					[CAMBIADO]:Break (Compact executive car-D Segment)			
C 180 Kompressor (204.246) (M 271.952)		Gasolina	RWD	1796	115	156	08.07-08.14	*
C 200 CDI (204.207) (OM 646.811)		Diesel	RWD	2148	100	136	08.07-12.09	*
C-Class T-Model (S202) 06.96-03.01					[CAMBIADO]:Break (Compact executive car-D Segment)			
C 200 T Kompressor (202.087) (M 111.956)		Gasolina	RWD	1998	120	163	09.00-03.01	*
C 200 T Kompressor (202.087) (M 111.944)		Gasolina	RWD	1998	141	192	11.96-03.01	*
C 230 T Kompressor (202.085) (M 111.975)		Gasolina	RWD	2295	142	193	06.97-09.00	*
C 240 T (202.086) (M 112.910)		Gasolina	RWD	2398	125	170	06.97-09.00	*
C 240 T (202.088) (M 112.915)		Gasolina	RWD	2597	125	170	09.00-03.01	*
C 280 T (202.089) (M 112.920)		Gasolina	RWD	2799	145	197	06.97-03.01	*
C 250 T Turbo-D (202.188) (OM 605.960)		Diesel	RWD	2497	110	150	06.96-03.01	*
CLC-Class (CL203) 05.08-06.11					Coupé (Compact executive car-D Segment)			
CLC 160 (203.731) (M 271.911)		Gasolina	RWD	1597	95	129	02.09-06.11	*
CLC 180 Kompressor (203.746) (M 271.946)		Gasolina	RWD	1796	105	143	05.08-06.11	*
CLC 200 CDI (203.707) (OM 646.962)		Diesel	RWD	2148	90	122	05.08-06.11	*
CLC 220 CDI (203.708) (OM 646.963)		Diesel	RWD	2148	100	136	05.08-06.11	*
CLC 220 CDI (203.708) (OM 646.963)		Diesel	RWD	2148	110	150	05.08-06.11	*
CLK-Class (A208) 03.98-03.02					Cabrío (Executive car-E Segment)			
CLK 200 (208.435) (M 111.941)		Gasolina	RWD	1998	100	136	03.98-03.02	*
CLK 200 (208.435) (M 111.945)		Gasolina	RWD	1998	100	136	03.98-03.02	*
CLK 200 Kompressor (208.445) (M 111.956)		Gasolina	RWD	1998	120	163	06.00-03.02	*
CLK 200 Kompressor (208.445) (M 111.944)		Gasolina	RWD	1998	141	192	03.98-06.00	*
CLK 230 Kompressor (208.448) (M 111.982)		Gasolina	RWD	2295	145	197	06.00-03.02	*
CLK-Class (C208) 06.97-12.03					Coupé (Executive car-E Segment)			
CLK 200 (208.335) (M 111.945)		Gasolina	RWD	1998	100	136	06.97-06.02	*
CLK 200 Kompressor (208.445) (M 111.956)		Gasolina	RWD	1998	120	163	06.00-06.02	*
CLK 200 Kompressor (208.445) (M 111.944)		Gasolina	RWD	1998	141	192	06.97-06.00	*
CLK 230 Kompressor (208.448) (M 111.973)		Gasolina	RWD	2295	142	193	06.97-06.00	*
CLK 230 Kompressor (208.448) (M 111.975)		Gasolina	RWD	2295	142	193	06.97-06.00	*
CLK 230 Kompressor (208.448) (M 111.982)		Gasolina	RWD	2295	145	197	06.00-06.02	*
CLK-Class II (C209) 05.02-03.10					Coupé (Executive car-E Segment)			
CLK 200 Kompressor (209.442) (M 271.940)		Gasolina	RWD	1796	120	163	09.02-05.09	*
CLK 200 CGI (209.343) (M 271.942)		Gasolina	RWD	1796	125	170	07.03-05.09	*

LISTA DE APLICACIONES - BUYERS GUIDE

CLK 220 CDI (209.308) (OM 646.966)	Diesel	RWD	2148	110	150	01.05-05.09	*
E-Class II (W210) 06.95-08.03				Sedán (Executive car-E Segment)			
E 200 (210.035) (M 111.942)	Gasolina	RWD	1998	100	136	06.95-08.00	*
E 200 Kompressor (210.048) (M 111.957)	Gasolina	RWD	1998	120	163	08.00-03.02	*
E 200 Kompressor (210.048) (M 111.947)	Gasolina	RWD	1998	137	186	06.97-03.02	*
E 230 (210.037) (M 111.970)	Gasolina	RWD	2295	110	150	06.95-06.97	*
E 240 (210.061) (M 112.911)	Gasolina	RWD	2398	125	170	06.97-08.00	*
E 240 (210.062) (M 112.914)	Gasolina	RWD	2597	125	170	08.00-03.02	*
E 200 D (210.003) (OM 604.917)	Diesel	RWD	1997	65	88	01.96-03.02	*
E 200 CDI (210.007) (OM 611.961)	Diesel	RWD	2148	85	116	07.99-03.02	*
E 220 CDI (210.006) (OM 611.961)	Diesel	RWD	2148	105	143	07.99-03.02	*
E 200 CDI (210.007) (OM 611.961)	Diesel	RWD	2151	75	102	06.98-03.02	*
E 220 CDI (210.006) (OM 611.961)	Diesel	RWD	2151	92	125	06.98-07.99	*
E 220 D (OM 604.912)	Diesel	RWD	2155	55	75	05.96-03.02	*
E 220 D (210.004) (OM 604.912)	Diesel	RWD	2155	70	95	06.95-07.99	*
E 250 D (210.010) (OM 605.912)	Diesel	RWD	2497	83	113	06.95-07.99	*
E 250 Turbo-D (210.015) (OM 605.962)	Diesel	RWD	2497	110	150	06.97-07.99	*
E 270 CDI (210.016) (OM 612.961)	Diesel	RWD	2685	120	163	07.99-03.02	*
E 270 CDI (210.016) (OM 612.961)	Diesel	RWD	2685	125	170	07.99-03.02	*
E 290 Turbo-D (210.017) (OM 602.982)	Diesel	RWD	2874	95	129	03.96-07.99	*
E 300 D (210.020) (OM 606.912)	Diesel	RWD	2996	100	136	06.95-06.97	*
E-Class II T-Model (S210) 06.96-03.03				[CAMBIADO]:Break (Executive car-E Segment)			
E 200 T (210.235) (M 111.942)	Gasolina	RWD	1998	100	136	06.96-08.00	*
E 200 T Kompressor (210.248) (M 111.947)	Gasolina	RWD	1998	137	186	06.97-03.03	*
E 230 T (210.237) (M 111.970)	Gasolina	RWD	2295	110	150	06.96-06.97	*
E 240 T (210.261) (M 112.911)	Gasolina	RWD	2398	125	170	06.97-03.03	*
E 240 T (210.262) (M 112.914)	Gasolina	RWD	2597	125	170	08.00-03.03	*
E 220 T CDI (210.206) (OM 611.961)	Diesel	RWD	2148	100	136	05.99-03.03	*
E 220 T CDI (210.206) (OM 611.961)	Diesel	RWD	2148	105	143	07.99-03.03	*
E 220 T CDI (210.206) (OM 611.961)	Diesel	RWD	2151	92	125	06.98-07.99	*
E 250 T D (210.210) (OM 605.912)	Diesel	RWD	2497	83	113	06.96-07.99	*
E 250 T Turbo-D (210.215) (OM 605.962)	Diesel	RWD	2497	110	150	06.97-07.99	*
E 290 T Turbo-D (210.217) (OM 602.982)	Diesel	RWD	2874	95	129	06.96-07.99	*
SLK-Class (R170) 04.96-04.04				Cabrío (Sports car-S Segment)			
200 (170.435) (M 111.946)	Gasolina	RWD	1998	100	136	09.96-03.00	*
200 Kompressor (170.445) (M 111.958)	Gasolina	RWD	1998	120	163	03.00-04.04	*
200 Kompressor (170.445) (M 111.943)	Gasolina	RWD	1998	141	192	10.96-03.00	*
230 Kompressor (170.449) (M 111.973)	Gasolina	RWD	2295	142	193	09.96-03.00	*
230 (170.449)	Gasolina	RWD	2295	143	194	09.00-04.04	*
230 Kompressor (170.449) (M 111.983)	Gasolina	RWD	2295	145	197	03.00-04.04	*
SLK-Class II (R171) 03.04-12.11				Cabrío (Sports car-S Segment)			
200 Kompressor (171.445) (M 271.944)	Gasolina	RWD	1796	120	163	03.04-02.11	*